

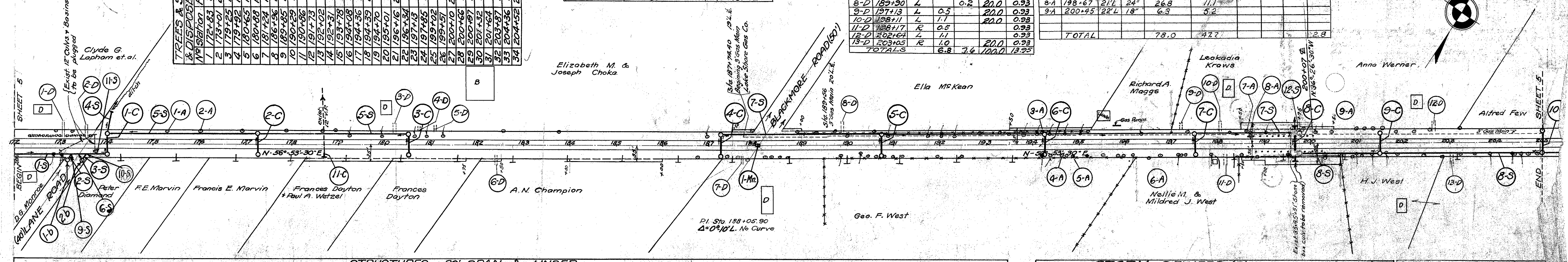
No.	Station	Species	Size x Ht.	Condition
1	172+33	20 E	20"	Pop.
2	172+33	20 R	24"	Pop.
3	179+25	16.5 L	26"	Maple
4	179+25	16.5 L	26"	Maple
5	180+45	15.5 L	26"	Maple
6	180+45	15.5 L	26"	Maple
7	181+24	15 L	24"	Maple
8	181+24	15 L	24"	Maple
9	182+30	20 E	20"	Maple
10	182+30	20 E	20"	Maple
11	190+10	18	18"	Maple
12	191+13	17 L	24"	Maple
13	192+02	17 L	30"	Maple
14	192+31	18 L	20"	Maple
15	193+08	19 L	20"	Maple
16	194+08	19 L	20"	Maple
17	194+38	20 R	24"	Maple
18	194+38	20 R	24"	Maple
19	194+70	20 R	36"	Maple
20	195+01	19 L	15"	Maple
21	196+16	20.5 R	24"	Maple
22	196+34	19 L	30"	Maple
23	197+13	20 R	24"	Maple
24	197+13	20 R	36"	Maple
25	199+02	20 L	36"	Maple
26	199+51	20 R	36"	Maple
27	200+10	20.5 L	30"	Maple
28	200+66	20 R	15"	Maple
29	200+97	20 R	12"	Maple
30	201+32	20 R	15"	Maple
31	201+64	19 R	15"	Maple
32	203+37	20 R	10"	Maple
33	204+36	20 R	10"	Maple
34	204+52	20.5 R	12"	Maple

No.	Station	Description	Elevation
7	175+32	Spike 32" Ab. TL of	686.60
8	180+20	24" Mark 48" of	686.20
9	186+78	24" " 22" of	686.01
10	190+43	38" " 23" of	684.83
11	195+18	36" " 23" of	683.94
12	200+32	36" " 28" of	678.42

Item No.	Station	Side	Cu. Yds. Exc.	Cu. Yds. Emb.	Pipe For Storm Sewer Under Drive	Av. Sp. Yds.
1-D	173+00	L	1.1		(18")	0.99
2-D	173+66	L	1.1			0.99
3-D	180+68	L		0.2	20.0	0.99
4-D	180+74	L		0.2	"	0.99
5-D	181+07	L	2.4			1.86
6-D	182+43	R	4.6			1.86
7-D	187+72	R	0.4			0.93
8-D	189+30	L	0.2		20.0	0.93
9-D	197+13	L	0.5		20.0	0.93
10-D	198+11	L	1.1			0.98
11-D	198+17	R	0.5			0.93
12-D	202+64	L	1.1			0.93
13-D	203+03	R	1.0		20.0	0.93
TOTALS			6.8	7.6	100.0	13.25

Item No.	Station	Ft. Rev. L	Size	Cu. Yds. Aeration	Sq. Yds. Riprap Well 18" Thick	Length	Ht.	Av. Thick.	Sq. Yds.
1-A	175+32	25' L	36"						
2-A	176+02	25' L	24"						
3-A	194+31	21.5' R	20"	7.9	3.3		1.0'	1.5	1.7
4-A	194+62	20.5' R	18"	6.3	5.2				
5-A	194+96	21' R	18"	6.3	5.2				
6-A	196+73	21' R	24"	12.4	5.6				
7-A	198+61	25' L	15"	12.0	10.7				
8-A	198+67	21' L	24"	26.8	11.1				
9-A	200+45	22' L	18"	6.3	5.2				
TOTAL				78.0	47.7				2.8

PLUG EXISTING STRUCTURES  
0.3 Cu. Yds. 1:5 1/2 Conc.



Item No.	Station	Type	Size	Excav. Cu. Yds.	REINFT. STEEL Lbs.	CONC. 1:2:4 Cu. Yds.	Pipe for Culverts				Work Required		
							12" Lin. Ft.	18" Lin. Ft.	54" Lin. Ft.	Sta. 11-A Catch Basin	Sta. 12-A Catch Basin	Each	Each
1-C	174+00	Pipe	18" x 37'	20.0									Build Std. 18" Pipe Culv.
2-C	177+25	"	12" x 37'	16.0				37					Build Std. 12" " Culv.
3-C	180+50	"	12" x 37'	16.0				37					" " " "
4-C	187+25	"	12" x 37'	16.0				37					" " " "
5-C	190+75	"	12" x 37'	16.0				37					" " " "
6-C	194+25	"	12" x 37'	16.0				37					" " " "
7-C	197+50	"	12" x 37'	16.0				37					" " " "
8-C	199+58.5	"	54" x 84'	107.0	124	8.5	52			84			Build Std. 54" x 84" Pipe Culv. Hw. on L & R.
9-C	201+50	"	12" x 37'	16.0				37					Build Std. 12" " " Culv.
10-C	205+00	"	12" x 37'	16.0				37					" " " "
11-C	178+10	"	12" x 37'	2.0	20	0.7		12					Extend existing 12" V.R. Culvert 12' on Rt. Build Std. headwall on Rt.
TOTALS				257.0	144	9.2	52	308	37	84	8	10	See Details on sheets 28 & 29

Item No.	Station	Right	Left	Pipe for S.S. Sewer Lin. Ft.	15" PIPE FOR STORM SEWER UNDER SUPERON	PIPE SPECIAL Y-BRANCH	SIDE DITCH INLET (6" 5' d. Cons. Div.)
1-S	172+00	173+81	R	121			1-b 173+17 34
2-S	173+22	Right	R	12			2-b 173+45 34
3-S	173+50	Right	R	12			TOTAL - 2
4-S	174+00	Left	L	48			MONUMENT CASTING REUSE
5-S	174+00	180+50	L	620			Station 188+05.90 on 4" (18") TOTAL - 1
6-S	173+23	173+49	R		26		
7-S	187+25	193+58.5	L	1115	40		
8-S	199+58.5	205+00	R				
9-S	173+21	173+23	R			1-15x12"	
10-S	173+49	173+51	R			1-15x12"	
11-S	173+51	173+99	R			48	
12-S	199+58.5	199+75	L			18	
TOTALS				24	2421	48	86

Grade line shown is crown elevation of finished pavement.

\* Quantities for Roadwall Excavation 3 Cu. Yds. Conc (1:1 1/2 Mix) 1.4 Cu. Yds. Steel 32 lbs.

