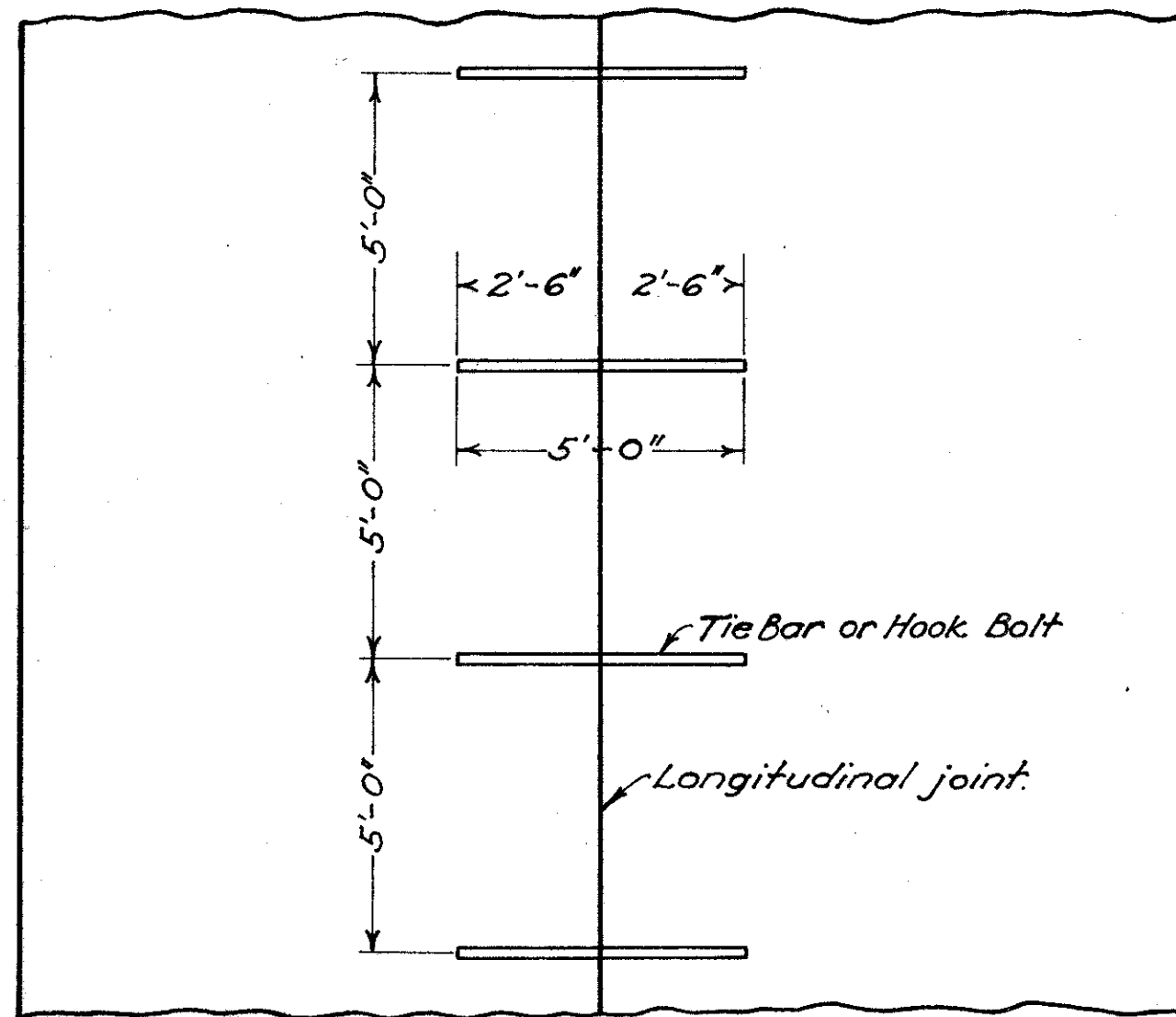


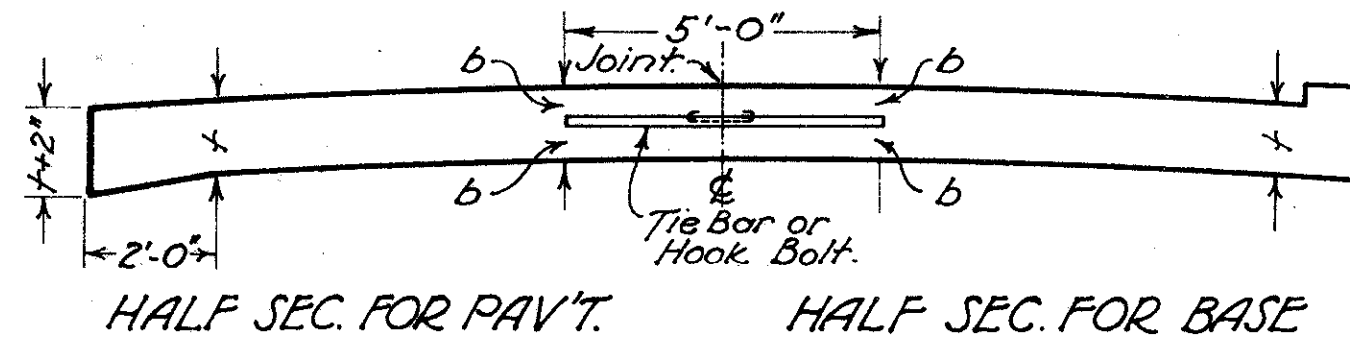
LONGITUDINAL JOINTS

FED. RD. DIST. NO.	STATE	FEDERAL AID PROJECT	FISCAL YEAR	2-A
10	OHIO	4 (3)	1938	31

S.H. No. 2 Lake County
Sec. J (PA)

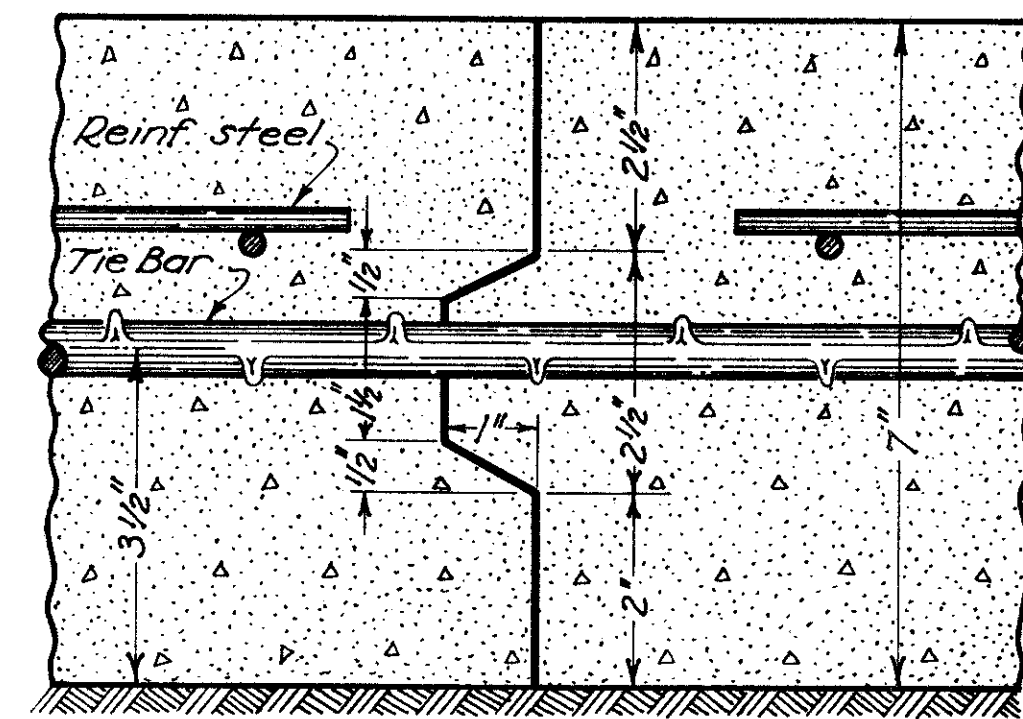


HALF PLAN FOR PAV'T. HALF PLAN FOR BASE



HALF SEC. FOR PAV'T. HALF SEC. FOR BASE

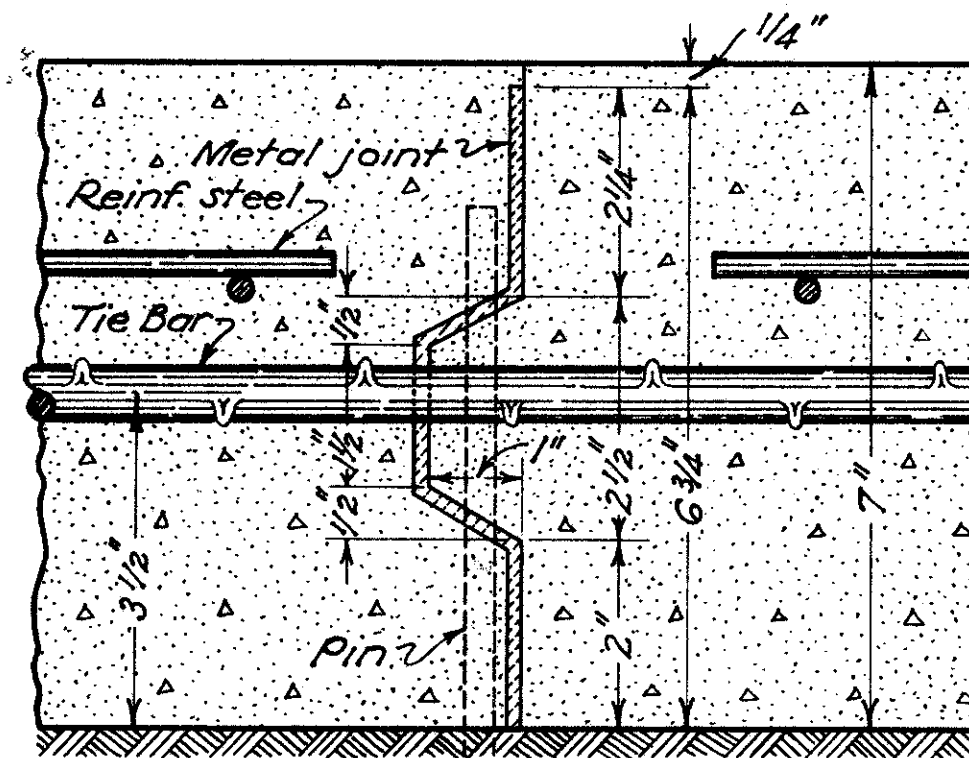
KEY JOINT



DETAIL OF JOINT

Note:- This joint is designed for 7" slab. When a greater or less thickness is used the joint shall be proportionally designed. Other deformations may be used if approved by the engineer.

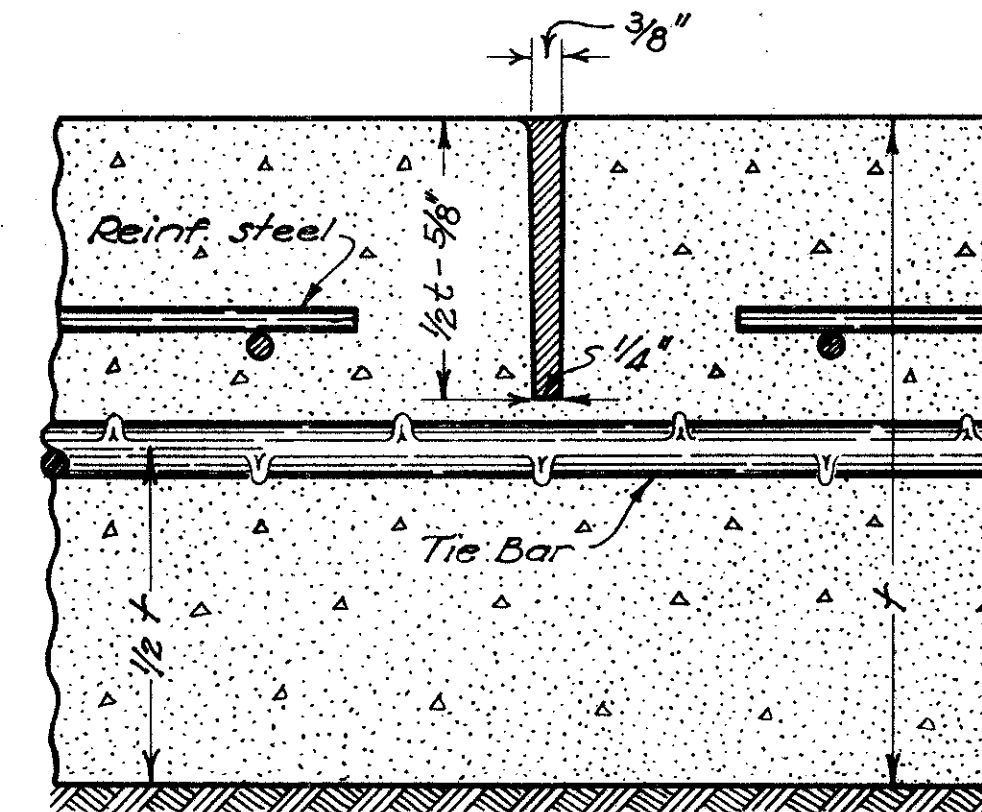
METAL JOINT



DETAIL OF JOINT

Note:- This joint is designed for 7" slab. When a greater or less thickness is used the joint shall be proportionally designed to extend within 1/4" of the surface of the slab. Other deformations may be used if approved by the engineer.

IMPRESSED JOINT



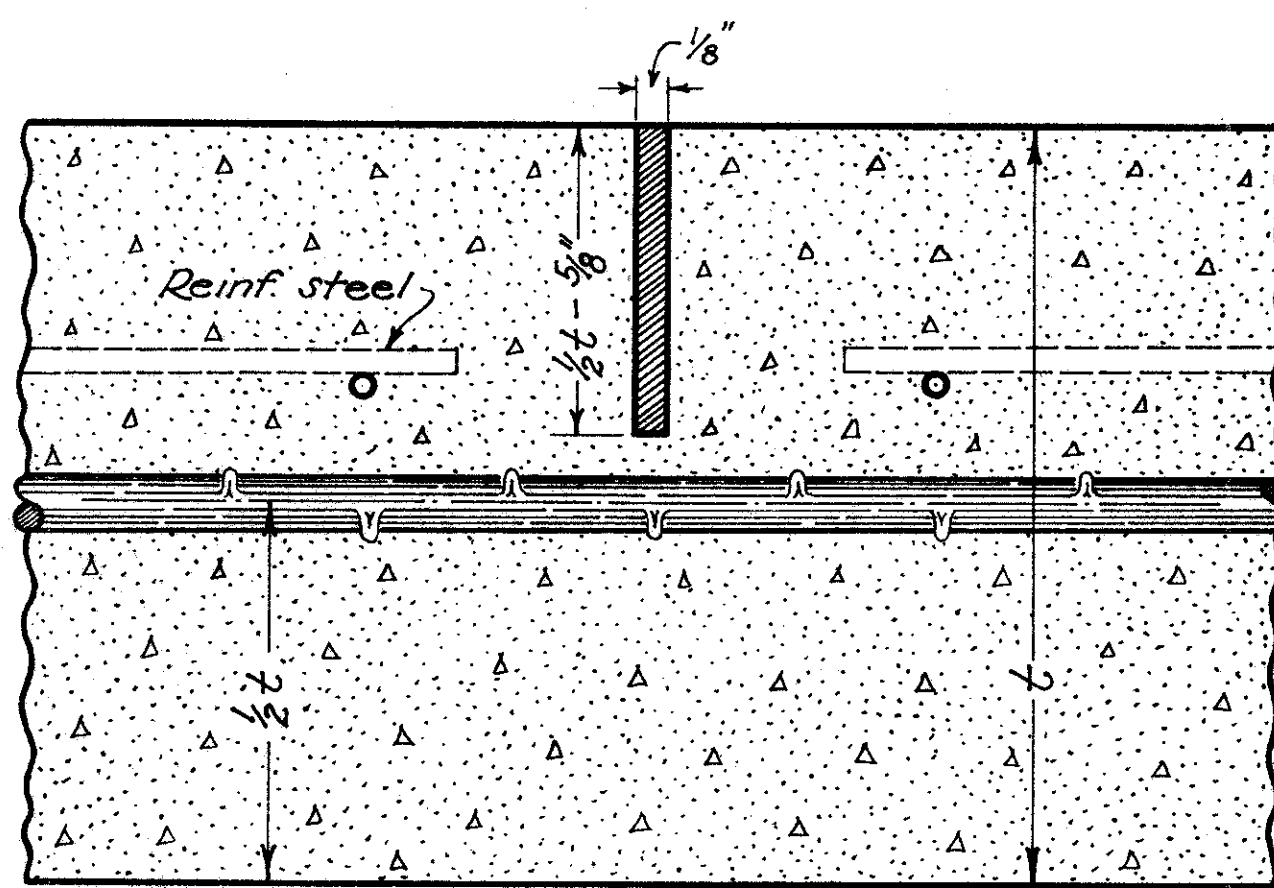
DETAIL OF JOINT

Description:- This joint shall be formed by impressing a device or bar into the newly deposited concrete before initial setting. The device or bar shall be removed as soon as the concrete is in such condition as to preclude of distortion or injury to the concrete. The groove thus formed shall be on the center line unless otherwise shown on the plans, and of the dimensions as detailed above. After the joint is formed it must be protected from dirt and foreign matter until the filler is placed. The joint shall be filled to the surface with filler as per supplemental specification No. 78, in lieu of the requirements under Sections B-71.033 and T-71.034. The filler shall be handled in such a manner that it will be confined to the joint and in no wise mar the surface.

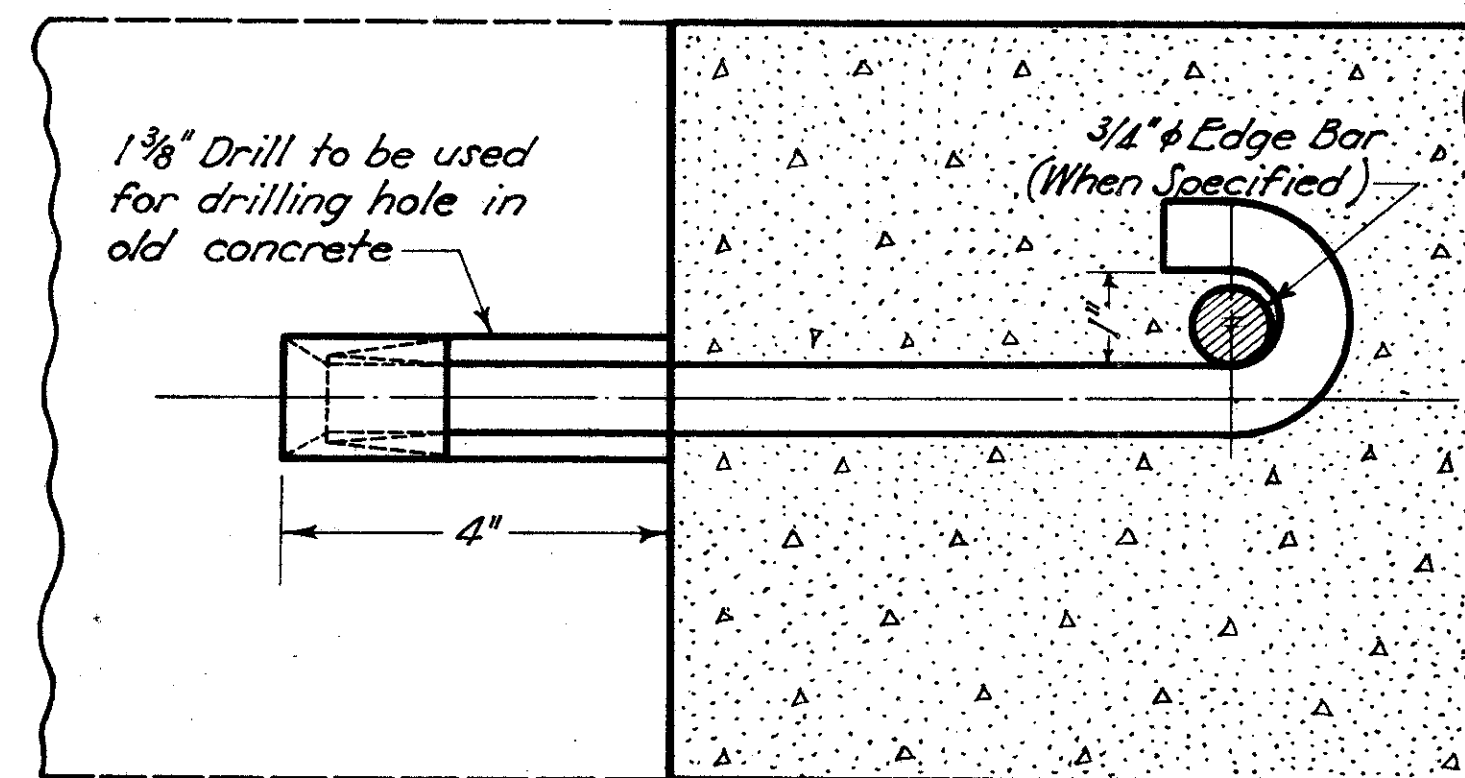
GENERAL:- Longitudinal joints shall be used when called for on the typical section, and shall be constructed as shown on this sheet.
The longitudinal joint between adjoining slabs poured in separate operations shall be a key joint with American hook bolts or equal, spaced 5'-0" center to center. Tie bars to be 1/2 inch round, deformed bars placed 5 foot centers extending across joint.
A satisfactory device shall be used to hold the tie bars in proper position.

Key joints used in part width construction shall be painted with two coats of Filler as per Supplemental Specification No. 78 before the adjoining slabs are poured.
The Metal, Key, and Premolded Joints shall not be edged.

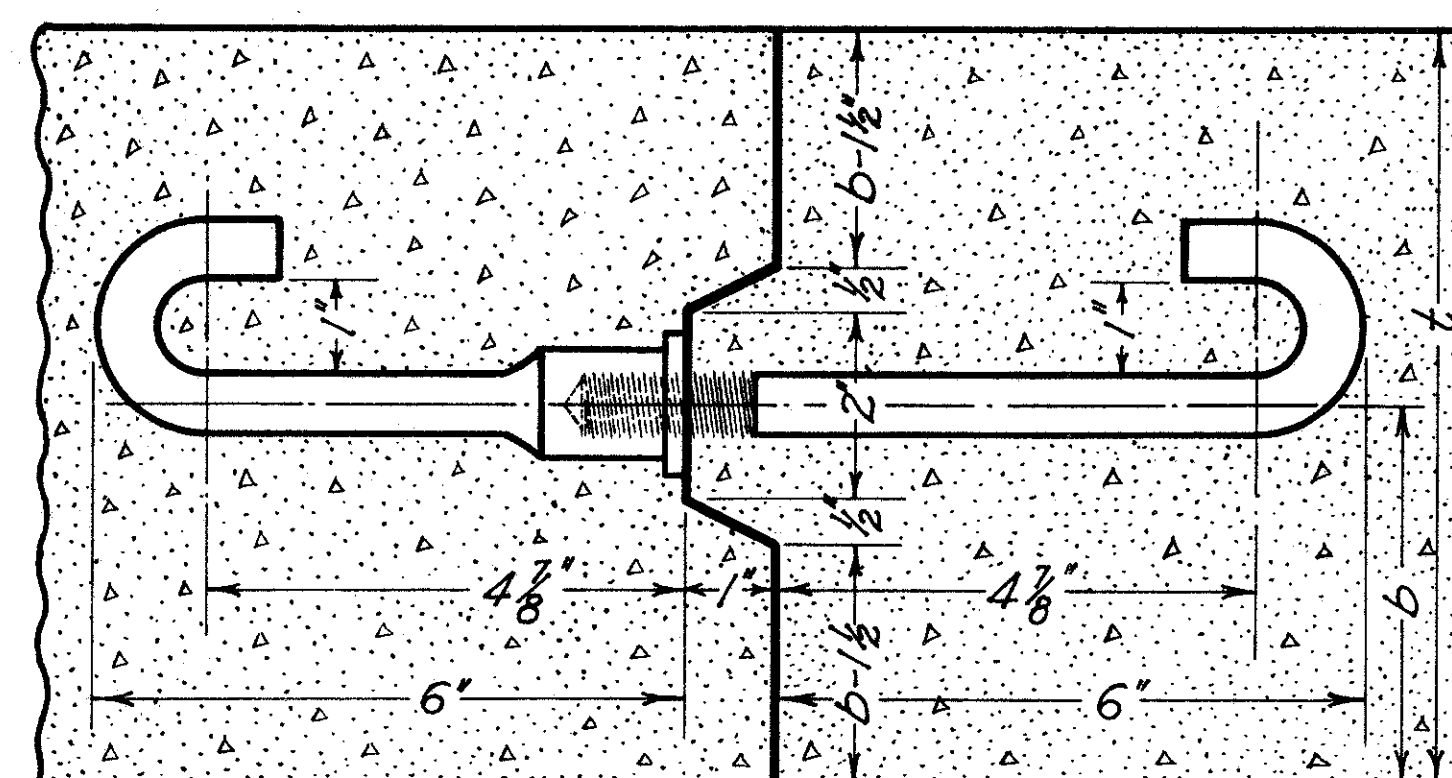
PREMOLDED JOINT



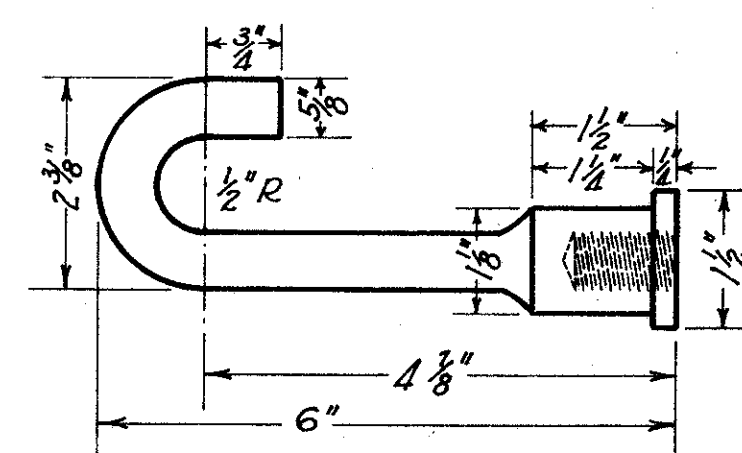
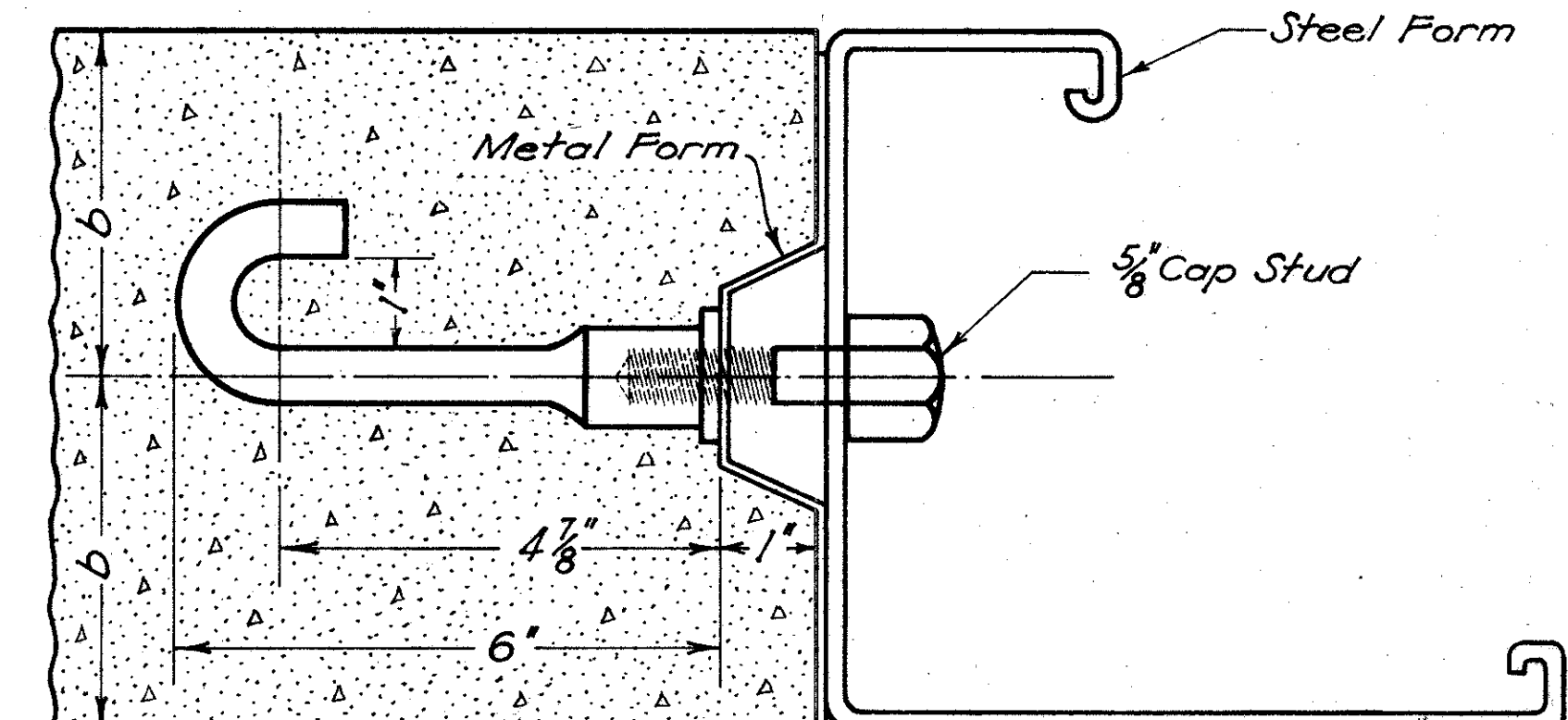
EXPANSION BOLT JOINT



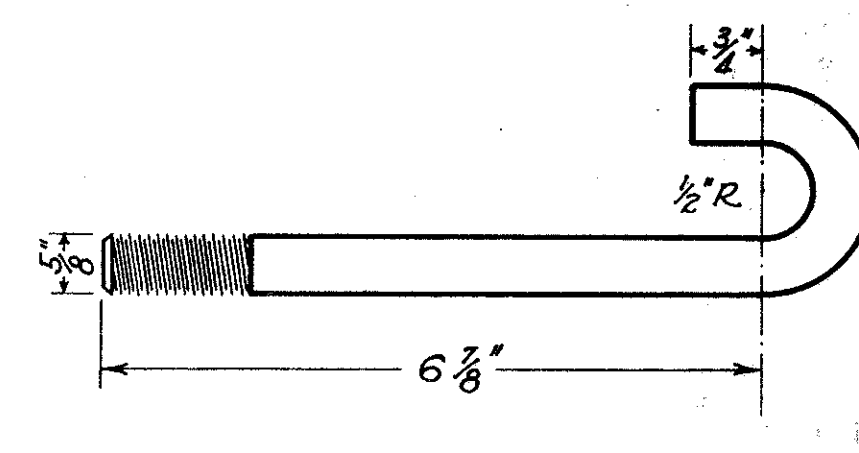
HOOK BOLT AND KEY JOINT



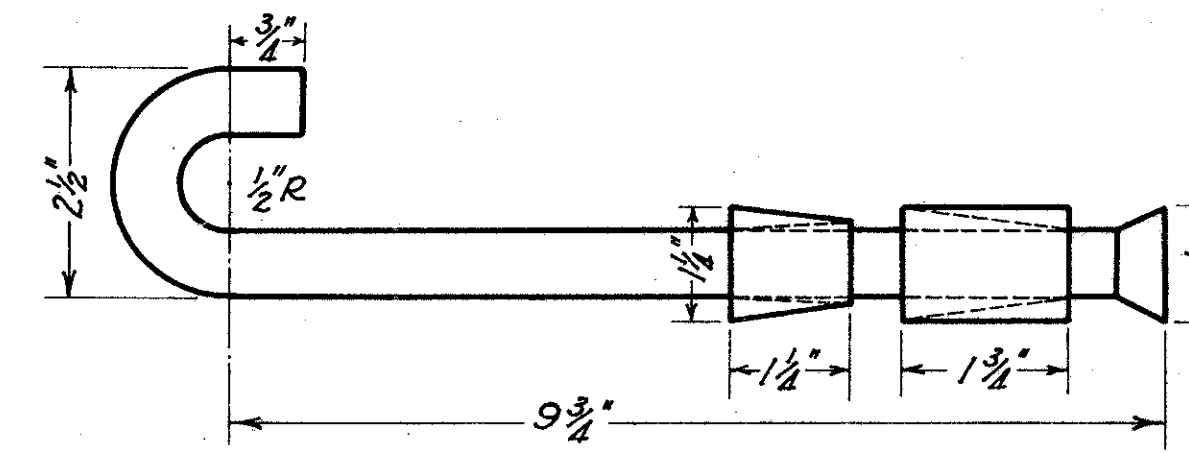
ACCEPTABLE METHOD OF FORMING JOINT



INSERT



J BOLT



EXPANSION BOLT DETAIL

HOOK BOLT DETAIL