

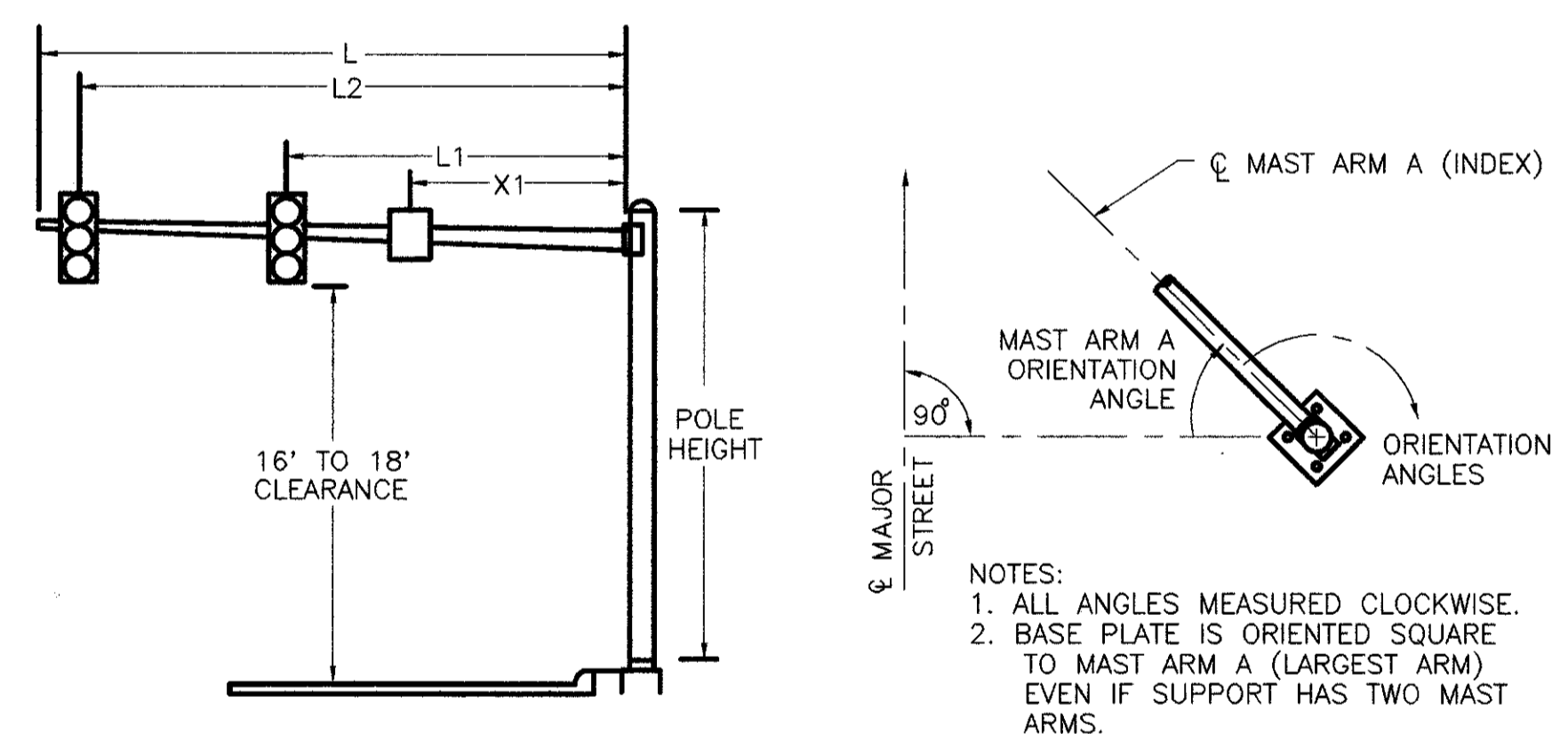
NOTES:  
 1. PHASE SPLITS INCLUDE ALL GREEN PLUS YELLOW & ALL RED  
 2. PERMISSIVES SHALL START AT THE ZERO POINT OF THE CYCLE  
 3. OFFSETS SHALL BE REFERENCED TO THE BEGINNING OF PHASE 2 YELLOW

	DIAL 1	DIAL 2	DIAL 3
CYCLE LENGTH	90	100	110
PHASE 1 SPLIT	40 %	41 %	62 %
PHASE 2 SPLIT	39 %	40 %	21 %
PHASE 4 SPLIT	21 %	19 %	17 %
PERMISSIVE	10 %	10 %	10 %
OFFSET	96 %	88 %	9 %
TIME OF DAY SCHEDULE	ALL OTHER TIMES	6:30AM TO 9:00AM MON-SAT	3:30PM TO 6:30PM MON-SAT

COORDINATION TIMING

FUNCTION	Ø2	Ø1	Ø4
MINIMUM GREEN	16	7	7
PED WALK	7	7	7
PED CLEARANCE	9	9	8
GREEN EXTENSION	3.0	3.0	3.0
MAXIMUM GREEN	61	36	15
YELLOW CLEARANCE	4.5	3.1	3.1
ALL RED CLEARANCE	2.0	1.1	1.1
RECALL	PED	NONE	NONE

SIGNAL TIMING



WIRING DIAGRAM

SIGNAL HEAD	Ø1		Ø2		Ø4		FLASH
	R/W	CLEAR	R/W	CLEAR	R/W	CLEAR	
A	R	R	R	G	R	R	
B	R	R	R	G	R	R	Y
C	R	R	R	G	R	R	Y
D	R	R	R	G	R	R	Y
E	R	R	R	G	R	R	Y
F	R	R	R	G	R	R	Y
G	R	R	R	R	R	R	Y
H	R	R	R	R	R	R	Y
R-R	DW	DW	DW	DW	DW	DW	DARK
S-S	W	FDW	DW	DW	DW	DW	DARK
T-T	DW	DW	DW	W	FDW	DW	DW

SIGNAL DISPLAY CHART

LOOP #	SIZE	# TURNS	MODE	DELAY	UNIT	# PHASE
L1	10'X15'X30'	2-4-2	PRESENCE	8	1	1
L2	6' x 6'	3	PRESENCE	0	2	SYSTEM
L3	8' x 15'	2-4-2	PRESENCE	8	3	4
L4	8' x 15'	2-4-2	PRESENCE	0	4	4
L5	6' x 6'	3	PRESENCE	0	5	SYSTEM

LOOP DETECTOR CHART

SUPPORT NO.	SIGNAL SUPPORT		FOUNDATION		ORIENTATION ANGLES (DEG.) FROM MAST ARM "A"					MAST ARM A ANGLE (DEG.)	MAST ARM B	PEDESTRIAN SIGNALS	PEDESTRIAN PUSH BUTTONS	POWER SERVICE	CONTROLLER	LUMINAIRE BRACKET	HANDHOLE	CABLE ENTRANCE (12" FROM TOP)
	TC-81.20	TC-12.30	L	OFFSET	L 1	L 2	L 3	L 4	X 1									
P1	PED		178+48	25'R							0	225	225				180	
P2	2	2	176+96	26'R	25	11	24				90	0	0				180	
P3	PED		176+89	27'L							0	90	90				180	
P4	PED		177+29	27'L							0	0	0				180	
P5	12	11	177+84	19'L	41	26	40				270	270	270				180	
P6	2	2	177+55	17'L	18	7	17				0	0	0				180	
P7	PED		178+19	27'L							0	250	270				180	

ORIENTATION ANGLE CHART

ITEM	TOTAL	UNIT	DESCRIPTION
202	90	SQ FT	WALK REMOVED
608	90	SQ FT	4" CONCRETE WALK
625	8	EACH	GROUND ROD
625	6	EACH	PULLBOX, MISC AS PER PLAN
625	222	LIN FT	CONDUIT, 2", 713.04
625	5	LIN FT	CONDUIT, 3", 713.04
625	181	LIN FT	CONDUIT, JACKED OR DRILLED UNDER PAVEMENT, 3"
625	227	LIN FT	TRENCH
630	1	EACH	SIGN HANGER ASSEMBLY, MAST ARM, AS PER PLAN
630	4	SQ. FT.	SIGN, FLAT SHEET, TYPE G
632	6	EACH	VEHICULAR SIGNAL HEAD, 3 SECT., 12" LENS, 1-WAY, AS PER PLAN
632	2	EACH	VEHICULAR SIGNAL HEAD, 4 SECT., 12" LENS, 1-WAY, AS PER PLAN
632	8	EACH	PEDESTRIAN SIGNAL HEAD, TYPE D2
632	8	EACH	PEDESTRIAN PUSHBUTTON
632	3	EACH	LOOP DETECTOR UNIT, AS PER PLAN
632	2	EACH	LOOP DETECTOR UNIT, DELAY AND EXTENSION TYPE, AS PER PLAN
632	7.44	CU YD	CONCRETE FOR ANCHOR BASE FOUNDATION
632	1	EACH	SIGNAL SUPPORT, TYPE TC-81.20, DES. 2, WITH 25' ARM
632	1	EACH	SIGNAL SUPPORT, TYPE TC-81.20, DES. 2, WITH 28' ARM
632	1	EACH	SIGNAL SUPPORT, TYPE TC-81.20, DES. 12 WITH MAST ARMS
			TYPE TC-81.20, DES. 11, 41' AND TYPE TC-81.20, DES. 1, 18'
632	4	EACH	PEDESTAL, 8", TRANSFORMER BASE
632	3	EACH	CABLE SUPPORT ASSEMBLY
632	378	LIN FT	LOOP DETECTOR PAVEMENT CUTTING
632	1470	LIN FT	SIGNAL CABLE, 7 CONDUCTOR, NO. 14 AWG
632	365	LIN FT	SIGNAL CABLE, 9 CONDUCTOR, NO. 14 AWG
632	960	LIN FT	LOOP DETECTOR WIRE, TYPE E
632	720	LIN FT	LOOP DETECTOR LEAD-IN CABLE
632	129	LIN FT	POWER CABLE, 3 CONDUCTOR, NO. 8 AWG
632	1	EACH	CONDUIT RISER, 1 1/2"
632	8	EACH	COVERING OF VEHICULAR SIGNAL HEAD
632	1	EACH	REMOVAL OF TRAFFIC SIGNAL INSTALLATION, AS PER PLAN
633	8.33	SQ FT	CONTROLLER WORK PAD
633	0.99	CU YD	CONCRETE FOR CABINET FOUNDATION
633	1	EACH	CONTROLLER, ACTUATED, 4 PHASE, SOLID STATE DIGITAL MICROPROCESSOR, AS PER PLAN