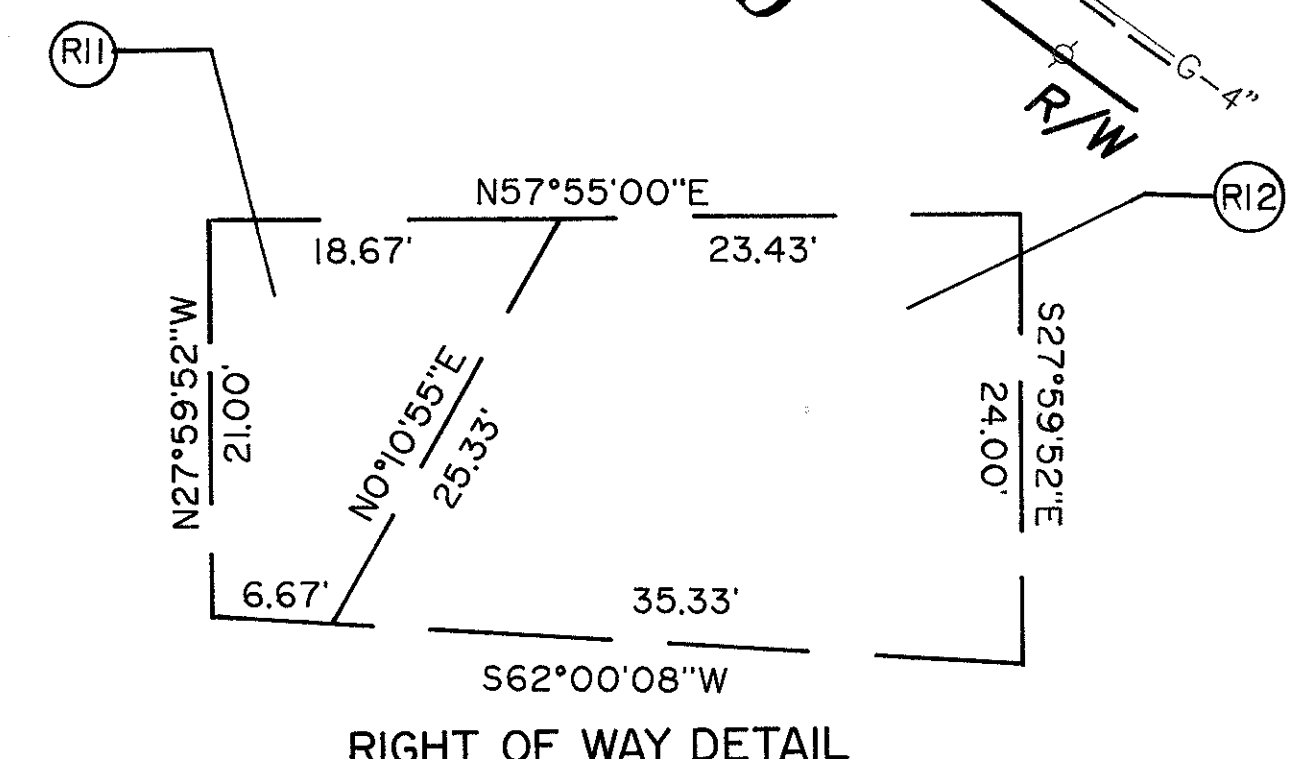
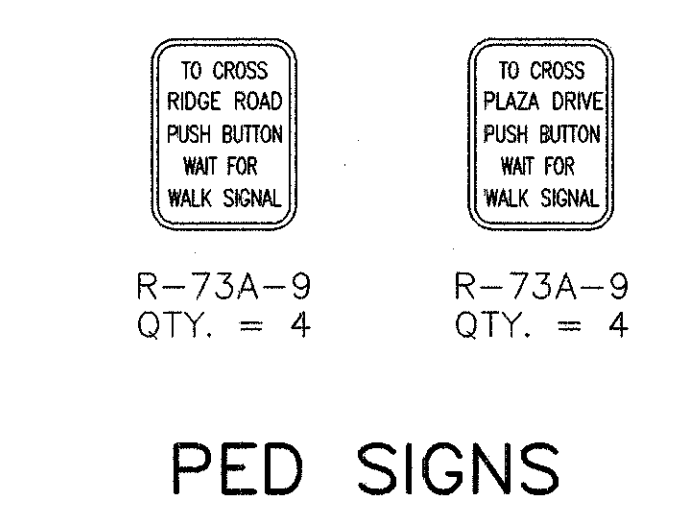
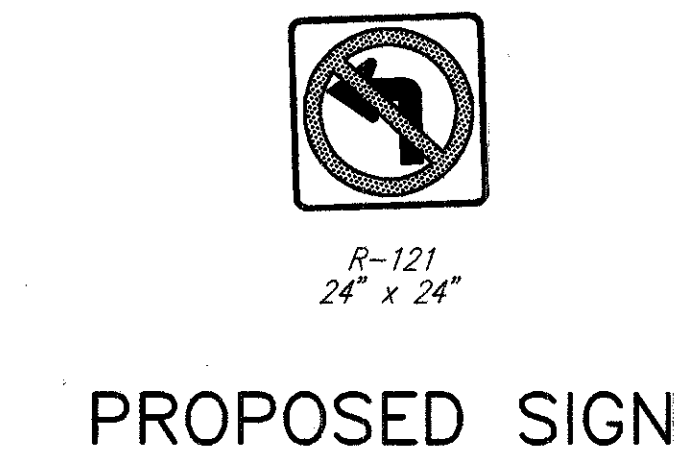
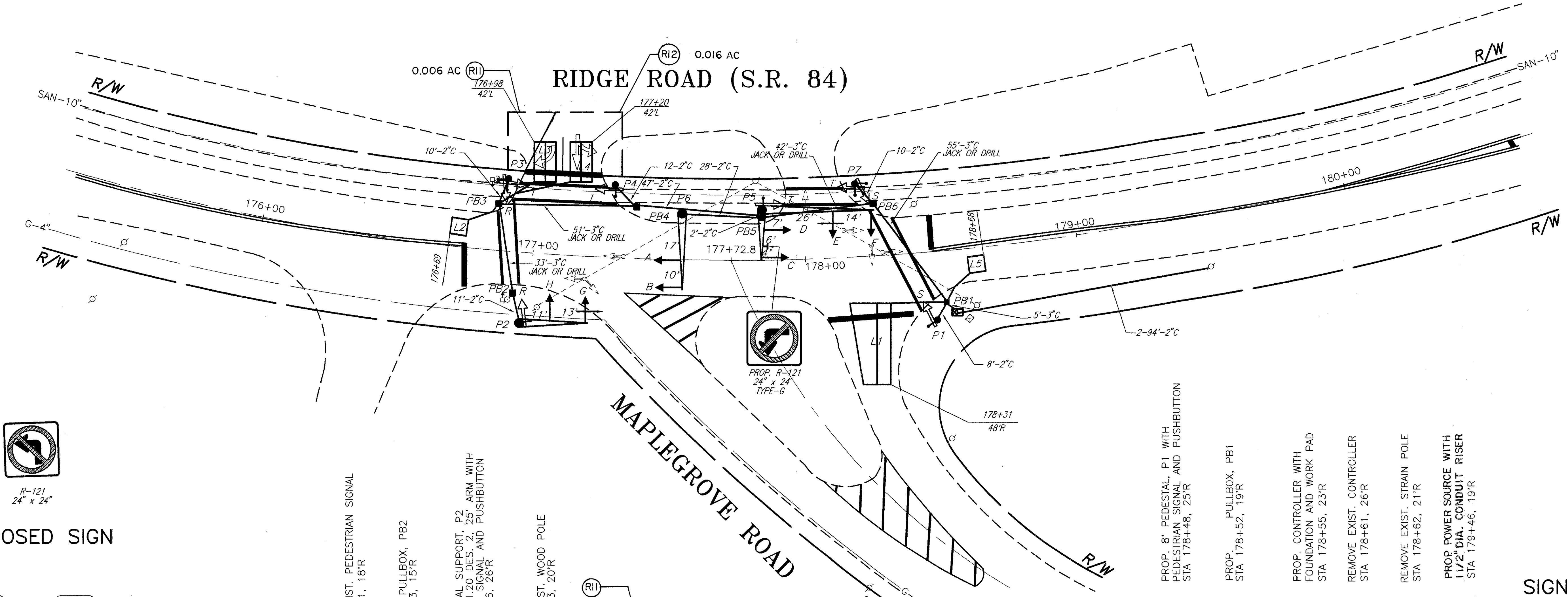
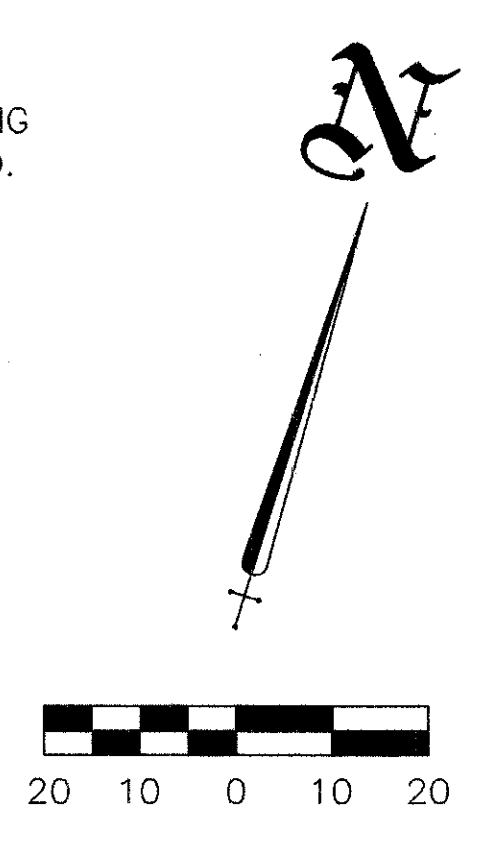


- REMOVE EXIST. PEDESTAL AND PEDESTRIAN SIGNAL STA 176+67, 52'R
- PROP. PULLBOX, PB3 STA 176+86, 18'L
- PROP. 8' PEDESTAL, P3 WITH PEDESTRIAN SIGNALS AND PUSHBUTTONS STA 176+89, 27'L
- PROP. 8' PEDESTAL, P4 WITH PEDESTRIAN SIGNAL AND PUSHBUTTON STA 177+29, 27'L
- PROP. PULLBOX, PB4 STA 177+38, 19'L
- PROP. SIGNAL SUPPORT, P6 TYPE TC-81.20 DES. 2, 28' ARM STA 177+55, 17'L
- REMOVE EXIST. WOOD POLE STA 177+81, 29'L
- PROP. SIGNAL SUPPORT, P5 TYPE TC-81.20 DES. 12, WITH MAST ARMS TYPE TC-81.20 DES. 11, 41' AND TYPE TC-81.20 DES. 1, 18' PEDESTRIAN SIGNAL AND PUSHBUTTON STA 177+84, 19'L
- PROP. PULLBOX, PB5 STA 177+84, 16'L
- PROP. 8' PEDESTAL, P7 WITH PEDESTRIAN SIGNALS AND PUSHBUTTONS STA 178+19, 27'L
- PROP. PULLBOX, PB6 STA 178+27, 19'L

THE UNDERGROUND UTILITIES ARE SHOWN ACCORDING TO INFORMATION FURNISHED BY THE UTILITIES CONCERNED. THEIR ACCURACY IS NOT GUARANTEED, THEREFORE THEY SHOULD BE RECHECKED BEFORE UNDERGROUND CONSTRUCTION BEGINS.



- PROP. 8' PEDESTAL, P1 WITH PEDESTRIAN SIGNAL AND PUSHBUTTON STA 178+48, 25'R
- PROP. PULLBOX, PB1 STA 178+52, 19'R
- PROP. CONTROLLER WITH FOUNDATION AND WORK PAD STA 178+55, 23'R
- REMOVE EXIST. CONTROLLER STA 178+61, 26'R
- REMOVE EXIST. STRAIN POLE STA 178+62, 21'R
- PROP. POWER SOURCE WITH 1 1/2" DIA. CONDUIT RISER STA 179+46, 19'R

