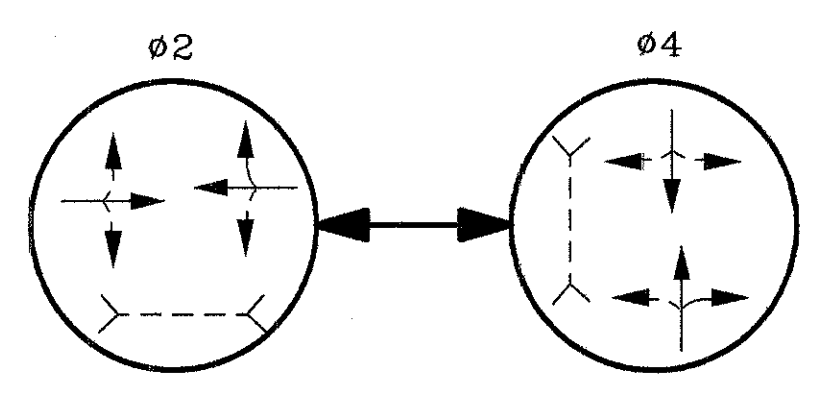
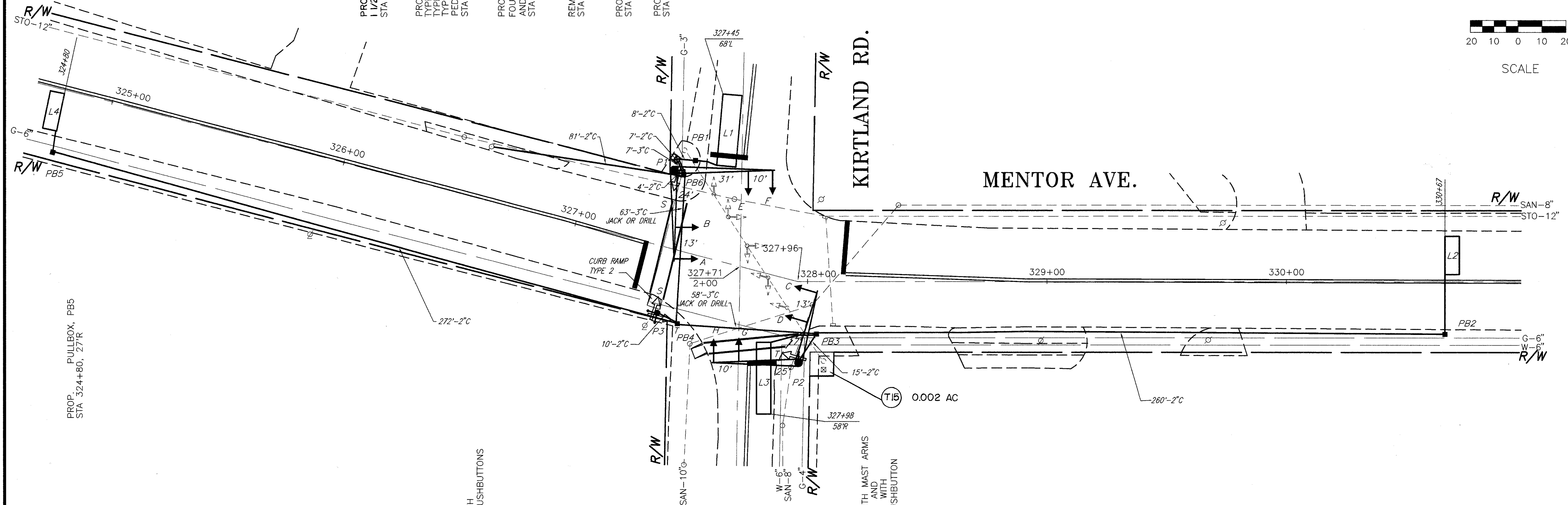
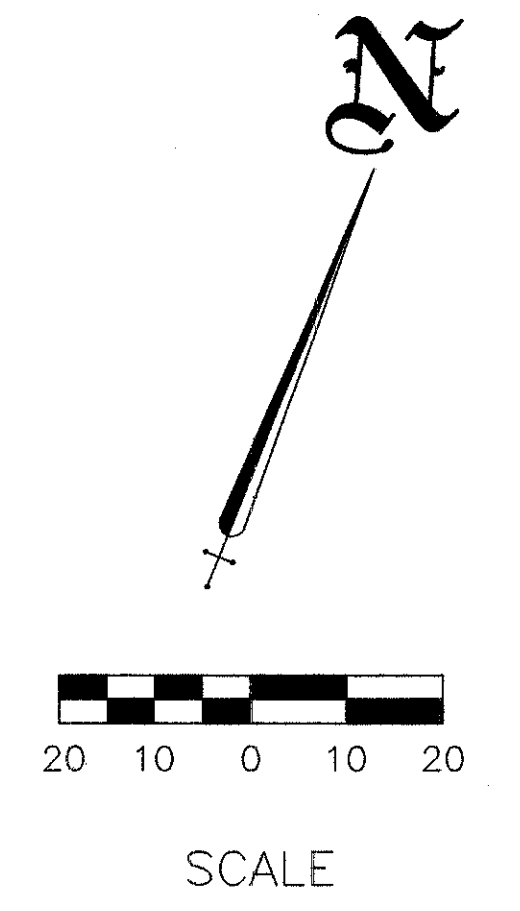


PHASING DIAGRAM

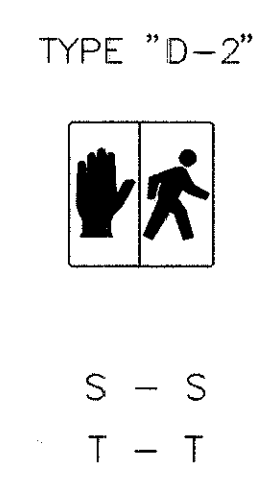


- PROP. POWER SOURCE WITH 1 1/2" DIA. CONDUIT RISER STA 326+58, 22'L
- PROP. SIGNAL SUPPORT, P1 TYPE TC-12.30 DES. 6, WITH MAST ARMS TYPE TC-81.20 DES. 11, 42' AND TYPE TC-81.20 DES. 11, 38' WITH PEDESTRIAN SIGNAL AND PUSHBUTTON STA 327+34, 32'L
- PROP. CONTROLLER WITH FOUNDATION, WORK PAD AND PHONE DROP STA 327+34, 37'L
- REMOVE EXIST. STRAIN POLE STA 327+36, 41'L
- PROP. PULLBOX, PB6 STA 327+38, 31'L
- PROP. PULLBOX, PB1 STA 327+42, 38'L

THE UNDERGROUND UTILITIES ARE SHOWN ACCORDING TO INFORMATION FURNISHED BY THE UTILITIES CONCERNED. THEIR ACCURACY IS NOT GUARANTEED, THEREFORE THEY SHOULD BE RECHECKED BEFORE UNDERGROUND CONSTRUCTION BEGINS.



SIGNALS



PROP. 8' PEDESTAL, P3 WITH PEDESTRIAN SIGNALS AND PUSHBUTTONS STA 327+43, 28'R

PROP. PULLBOX, PB4 STA 327+53, 30'R

PROP. SIGNAL SUPPORT, P2 WITH MAST ARMS TYPE TC-81.20 DES. 11, 36' AND TYPE TC-81.20 DES. 4, 36' AND TYPE TC-81.20 DES. 2, 31' WITH PEDESTRIAN SIGNAL AND PUSHBUTTON STA 327+96, 34'R

PROP. PULLBOX, PB3 STA 328+04, 22'R

REMOVE EXIST. STRAIN POLE STA 328+07, 34'R

REMOVE EXIST. CONTROLLER STA 328+07, 38'R

PROP. PULLBOX, PB2 STA 330+67, 23'R



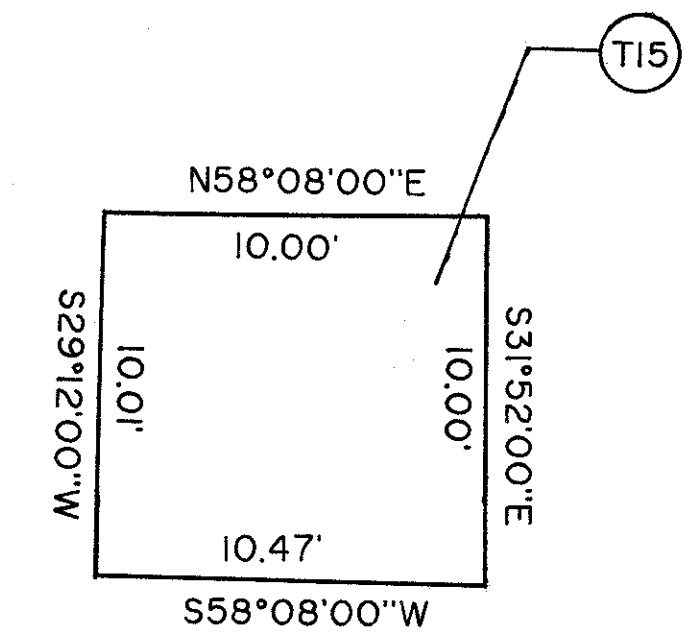
R-73A-9 QTY. = 2



R-73A-9 QTY. = 2

PED SIGNS

ALL S - S
T - T
ALL HEADS ARE 12" POLY



RIGHT OF WAY DETAIL