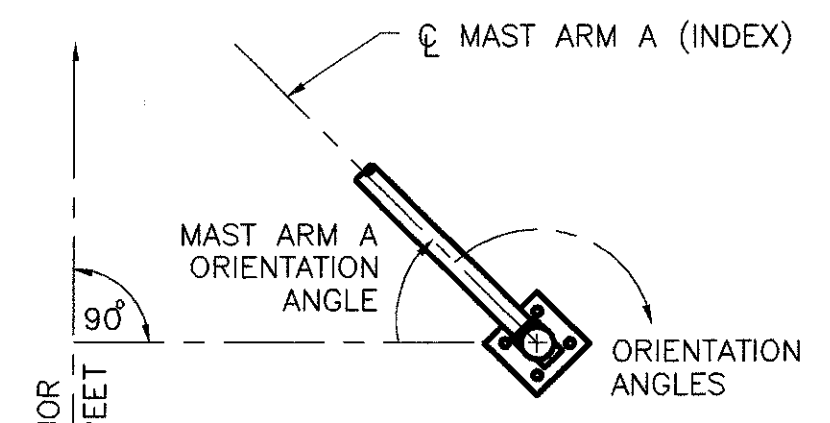
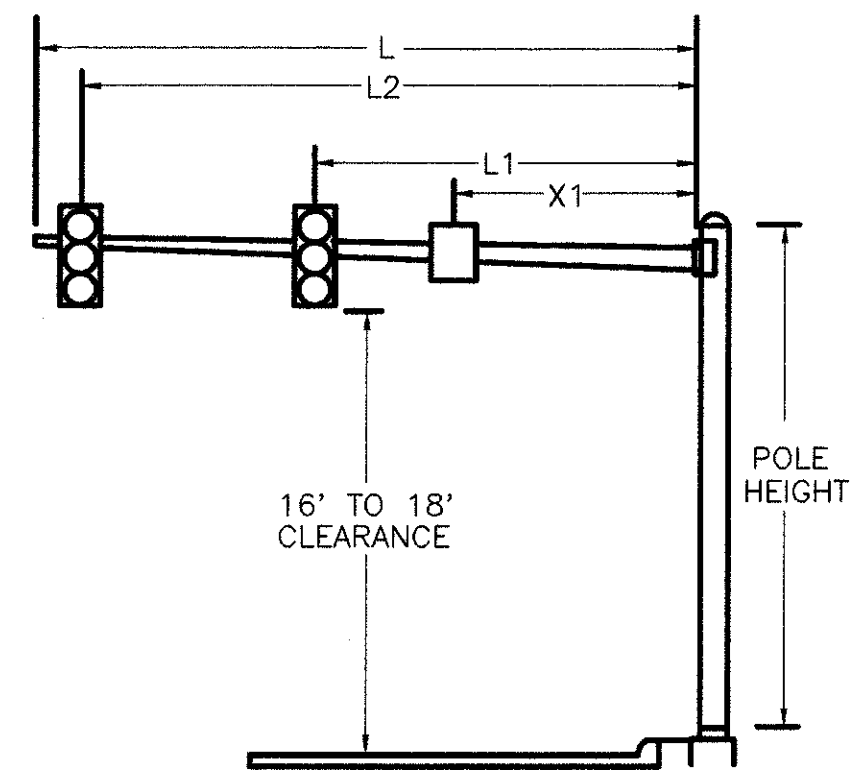


SIGNAL HEAD	Ø2				Ø4				FLASH
	R/W	CLEAR	R/W	CLEAR	R/W	CLEAR	R/W	CLEAR	
A	G	G	Y	R	R	R	R	R	Y
B	G	G	Y	R	R	R	R	R	Y
C	G	G	Y	R	R	R	R	R	Y
D	G	G	Y	R	R	R	R	R	Y
E	R	R	R	R	G	G	Y	R	R
F	R	R	R	R	G	G	Y	R	R
G	R	R	R	R	G	G	Y	R	R
H	R	R	R	R	G	G	Y	R	R
S-S	DW	DW	DW	DW	W	FDW	DW	DW	DARK
T-T	W	FDW	DW	DW	DW	DW	DW	DW	DARK

SIGNAL DISPLAY CHART

FUNCTION	Ø2	Ø4
MINIMUM GREEN	15	7
PED WALK	7	7
PED CLEARANCE	8	10
GREEN EXTENSION	3.0	3.0
MAXIMUM GREEN	81	21
YELLOW CLEARANCE	3.6	3.1
ALL RED CLEARANCE	0.8	1.1
RECALL	PED	NONE

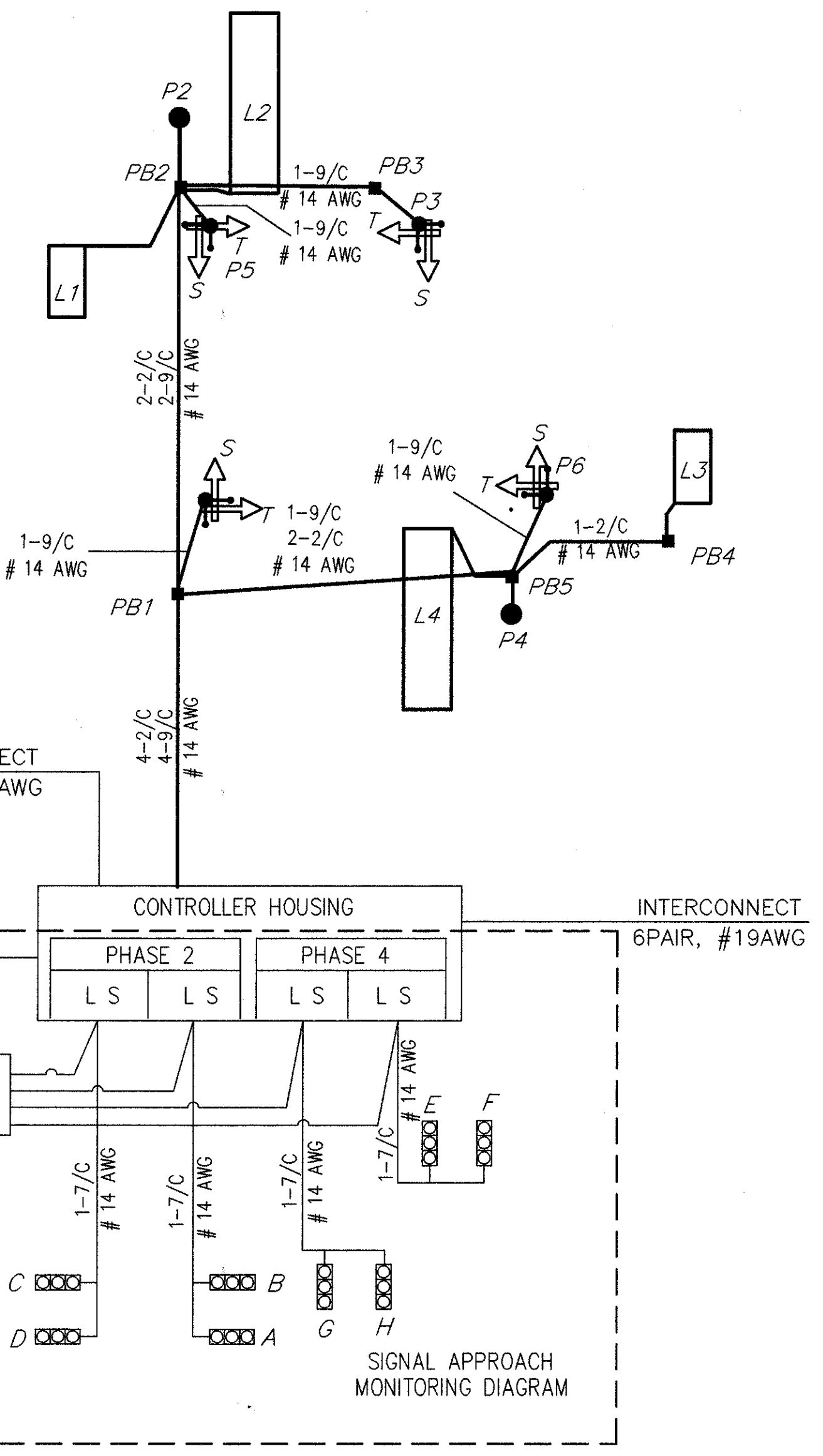
SIGNAL TIMING



NOTES:
1. ALL ANGLES MEASURED CLOCKWISE.
2. BASE PLATE IS ORIENTED SQUARE TO MAST ARM A (LARGEST ARM) EVEN IF SUPPORT HAS TWO MAST ARMS.

SUPPORT NO.	SIGNAL SUPPORT		FOUNDATION					MAST ARM A ANGLE (DEG.)	MAST ARM B	PEDESTRIAN SIGNALS	PEDESTRIAN PUSH BUTTONS	POWER SERVICE	CONTROLLER	LUMINAIRE BRACKET	HANDHOLE	CABLE ENTRANCE (12" FROM TOP)		
	POLE DESIGN NO.	ARM DESIGN NO.	STATION	OFFSET	L	L 1	L 2										L 3	X 1
	TC-81.20	TC-12.30	(FT.)	(FT.)	(FT.)	(FT.)	(FT.)										(FT.)	(FT.)
P1	11	4	165+42	32'R														
P2		2	165+40	42'L	36	25	35		0									
P3		2	165+81	35'L					270									
P4		3	165+79	38'R	35	24	34		0									
P5		2	165+42	32'L					270									
P6		2	165+85	27'R					270									

ORIENTATION ANGLE CHART



WIRING DIAGRAM

LOOP #	SIZE	# TURNS	MODE	DELAY	UNIT	# PHASE
L1	6' x 12'	3	PRESENCE	0	1	SYSTEM
L2	8' x 30'	2	PRESENCE	8	2	4
L3	6' x 12'	3	PRESENCE	0	3	SYSTEM
L4	8' x 30'	2	PRESENCE	8	4	4

LOOP DETECTOR CHART

100% CITY PARTICIPATION

NOTES:

1. PHASE SPLITS SHALL INCLUDE ALL GREEN PLUS YELLOW & ALL RED
2. PERMISSIVES SHALL START AT THE ZERO POINT OF THE CYCLE
3. OFFSETS SHALL BE REFERENCED TO THE BEGINNING OF PHASE 2 YELLOW

	DIAL 1	DIAL 2	DIAL 3
CYCLE LENGTH	100	120	110
PHASE 2 SPLIT	79 %	83 %	81 %
PHASE 4 SPLIT	21 %	17 %	19 %
PERMISSIVE	15 %	15 %	15 %
OFFSET	60 %	14 %	49 %
TIME OF DAY SCHEDULE	ALL OTHER TIMES	6:30AM TO 9:00AM MON-SAT	3:30PM TO 6:30PM MON-SAT

COORDINATION TIMING

100 % CITY PARTICIPATION

ITEM	TOTAL	UNIT	DESCRIPTION
202	530	SQ FT	WALK REMOVED
608	530	SQ FT	4" CONCRETE WALK
625	7	EACH	GROUND ROD
625	5	EACH	PULLBOX, MISC. AS PER PLAN
625	102	LIN FT	CONDUIT, 2", 713.04
625	4	LIN FT	CONDUIT, 3", 713.04
625	153	LIN FT	CONDUIT, JACKED OR DRILLED UNDER PAVEMENT, 3"
625	106	LIN FT	TRENCH
632	8	EACH	VEHICULAR SIGNAL HEAD, 3 SECT., 12" LENS, 1-WAY, AS PER PLAN
632	8	EACH	PEDESTRIAN SIGNAL HEAD, TYPE D2
632	8	EACH	PEDESTRIAN PUSHBUTTON
632	2	EACH	LOOP DETECTOR UNIT, AS PER PLAN
632	2	EACH	LOOP DETECTOR UNIT, DELAY AND EXTENSION TYPE, AS PER PLAN
632	6.88	CU YD	CONCRETE FOR ANCHOR BASE FOUNDATION
632	1	EACH	SIGNAL SUPPORT, TYPE TC-81.20, DES. 4 WITH MAST ARMS
632	1	EACH	TYPE TC-81.20, DES. 3, 35' AND TYPE TC-81.20, DES. 2, 29'
632	1	EACH	SIGNAL SUPPORT, TYPE TC-81.20, DES. 11 WITH MAST ARMS
632	1	EACH	TYPE TC-81.20, DES. 4, 36' AND TYPE TC-81.20, DES. 2, 26'
632	4	EACH	PEDESTAL, 8", TRANSFORMER BASE
632	2	EACH	CABLE SUPPORT ASSEMBLY
632	258	LIN FT	LOOP DETECTOR PAVEMENT CUTTING
632	605	LIN FT	SIGNAL CABLE, 7 CONDUCTOR, NO. 14 AWG
632	443	LIN FT	SIGNAL CABLE, 9 CONDUCTOR, NO. 14 AWG
632	644	LIN FT	LOOP DETECTOR WIRE, TYPE E
632	364	LIN FT	LOOP DETECTOR LEAD-IN CABLE
632	74	LIN FT	POWER CABLE, 3 CONDUCTOR, NO. 8 AWG
632	1	EACH	CONDUIT RISER, 1 1/2"
632	8	EACH	COVERING OF VEHICULAR SIGNAL HEAD
632	1	EACH	REMOVAL OF TRAFFIC SIGNAL INSTALLATION, AS PER PLAN
633	0.99	CU YD	CONCRETE FOR CABINET FOUNDATION
633	1	EACH	CONTROLLER, ACTUATED, 4 PHASE, SOLID STATE DIGITAL MICROPROCESSOR, AS PER PLAN