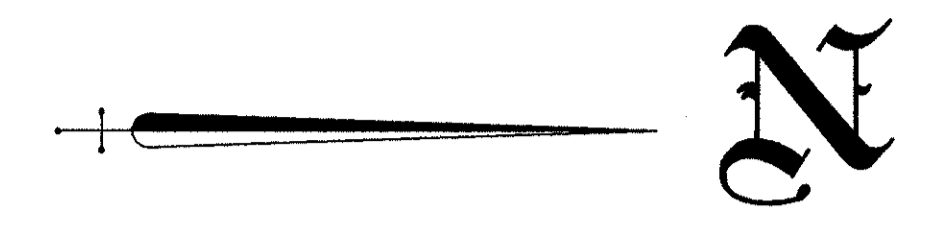
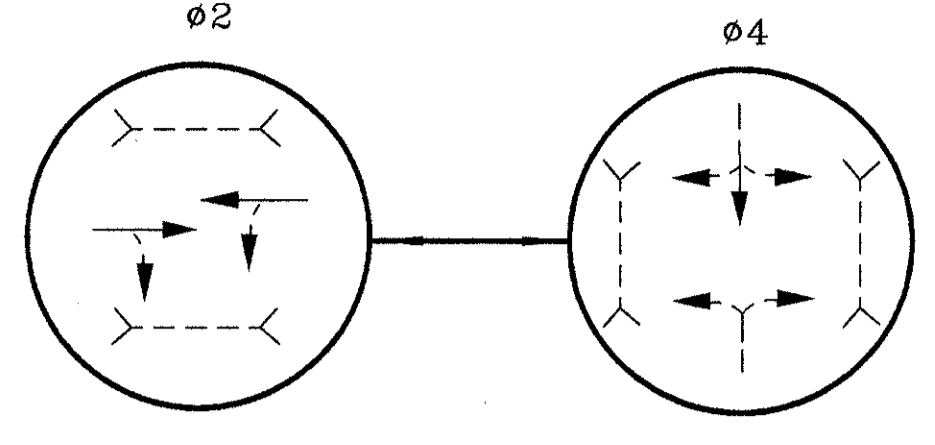
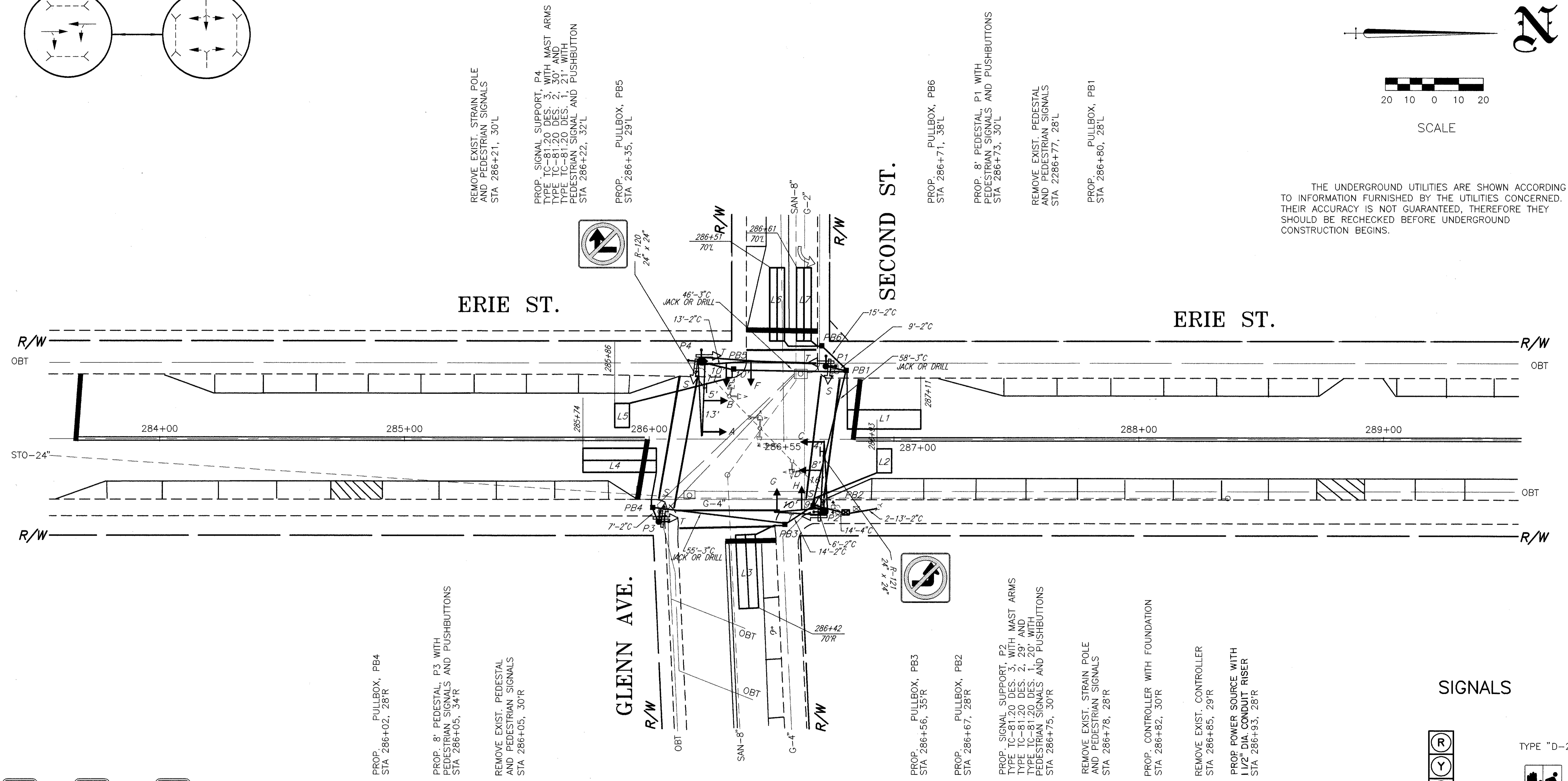


PHASING DIAGRAM



SCALE

THE UNDERGROUND UTILITIES ARE SHOWN ACCORDING TO INFORMATION FURNISHED BY THE UTILITIES CONCERNED. THEIR ACCURACY IS NOT GUARANTEED, THEREFORE THEY SHOULD BE RECHECKED BEFORE UNDERGROUND CONSTRUCTION BEGINS.



- R-73A-9 QTY. = 2
- R-73A-9 QTY. = 4
- R-73A-9 QTY. = 2

PROP. PULLBOX, PB4  
STA 286+02, 28'R

PROP. 8' PEDESTAL, P3 WITH PEDESTRIAN SIGNALS AND PUSHBUTTONS  
STA 286+05, 34'R

REMOVE EXIST. PEDESTAL AND PEDESTRIAN SIGNALS  
STA 286+05, 30'R

REMOVE EXIST. STRAIN POLE AND PEDESTRIAN SIGNALS  
STA 286+21, 30'L

PROP. SIGNAL SUPPORT, P4  
TYPE TC-81,20 DES. 3, WITH MAST ARMS  
TYPE TC-81,20 DES. 2, 29' AND  
TYPE TC-81,20 DES. 1, 20' WITH  
PEDESTRIAN SIGNAL AND PUSHBUTTON  
STA 286+22, 32'L

PROP. PULLBOX, PB5  
STA 286+35, 29'L

PROP. PULLBOX, PB3  
STA 286+56, 35'R

PROP. PULLBOX, PB2  
STA 286+67, 28'R

PROP. SIGNAL SUPPORT, P2  
TYPE TC-81,20 DES. 3, WITH MAST ARMS  
TYPE TC-81,20 DES. 2, 29' AND  
TYPE TC-81,20 DES. 1, 20' WITH  
PEDESTRIAN SIGNALS AND PUSHBUTTONS  
STA 286+75, 30'R

REMOVE EXIST. STRAIN POLE AND PEDESTRIAN SIGNALS  
STA 286+78, 28'R

PROP. CONTROLLER WITH FOUNDATION  
STA 286+82, 30'R

REMOVE EXIST. CONTROLLER  
STA 286+85, 29'R

PROP. POWER SOURCE WITH 1/2" DIA. CONDUIT RISER  
STA 286+93, 28'R

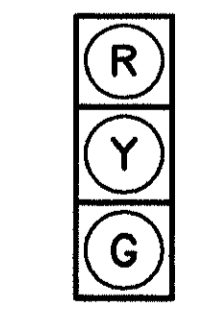
PROP. PULLBOX, PB6  
STA 286+71, 38'L

PROP. 8' PEDESTAL, P1 WITH PEDESTRIAN SIGNALS AND PUSHBUTTONS  
STA 286+73, 30'L

REMOVE EXIST. PEDESTAL AND PEDESTRIAN SIGNALS  
STA 286+77, 28'L

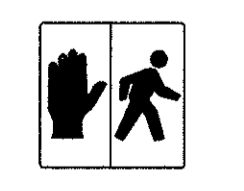
PROP. PULLBOX, PB1  
STA 286+80, 28'L

SIGNALS



ALL  
ALL HEADS ARE 12" POLY

TYPE "D-2"



S - S  
T - T