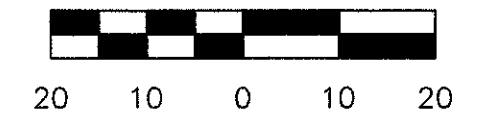
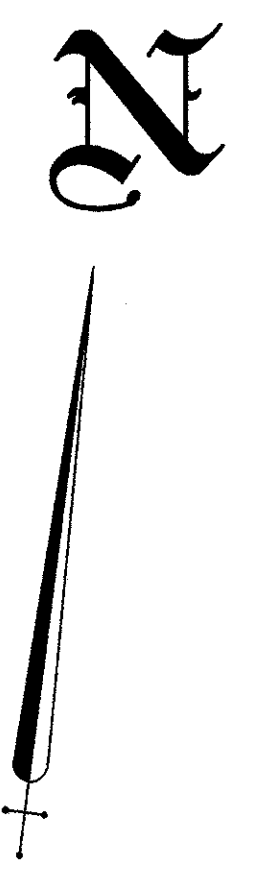
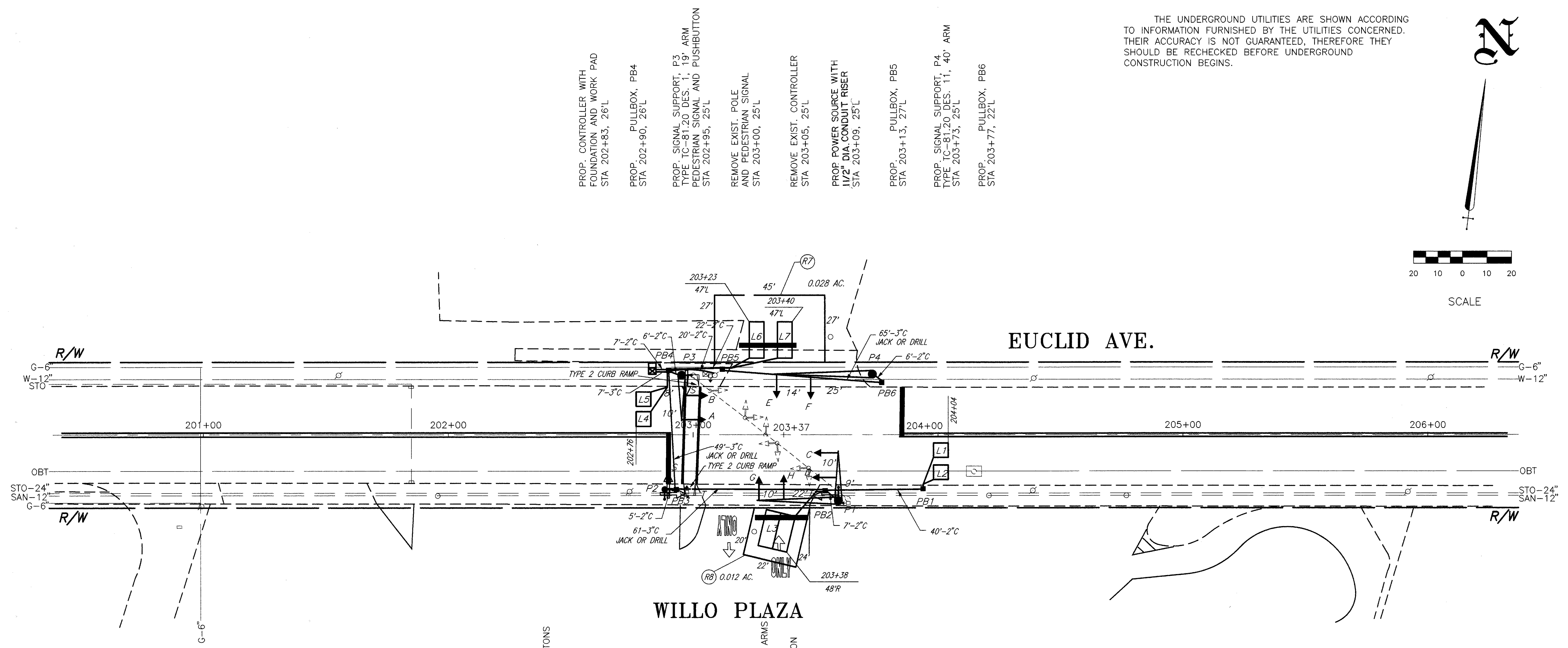


THE UNDERGROUND UTILITIES ARE SHOWN ACCORDING TO INFORMATION FURNISHED BY THE UTILITIES CONCERNED. THEIR ACCURACY IS NOT GUARANTEED, THEREFORE THEY SHOULD BE RECHECKED BEFORE UNDERGROUND CONSTRUCTION BEGINS.

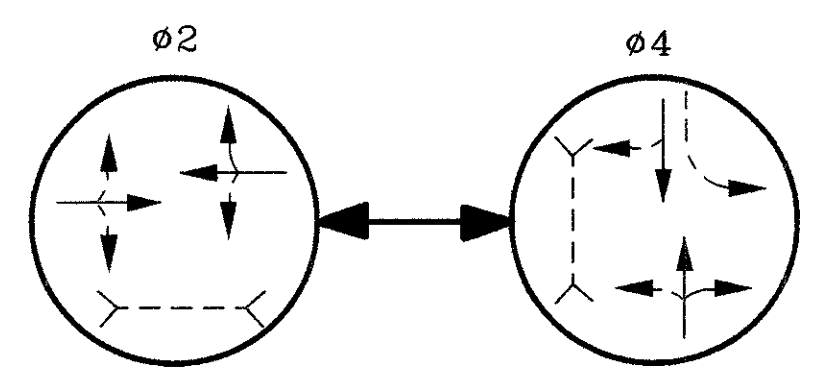


SCALE

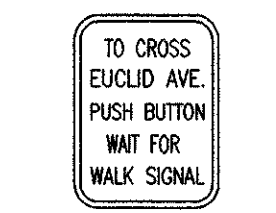


- PROP. CONTROLLER WITH FOUNDATION AND WORK PAD STA 202+83, 26'L
- PROP. PULLBOX, PB4 STA 202+90, 26'L
- PROP. SIGNAL SUPPORT, P3 TYPE TC-81.20 DES. 1, 19' ARM PEDESTRIAN SIGNAL AND PUSHBUTTON STA 202+95, 25'L
- REMOVE EXIST. POLE AND PEDESTRIAN SIGNAL STA 203+00, 25'L
- REMOVE EXIST. CONTROLLER STA 203+05, 25'L
- PROP. POWER SOURCE WITH 1/2" DIA. CONDUIT RISER STA 203+09, 25'L
- PROP. PULLBOX, PB5 STA 203+13, 27'L
- PROP. SIGNAL SUPPORT, P4 TYPE TC-81.20 DES. 11, 40' ARM STA 203+73, 25'L
- PROP. PULLBOX, PB6 STA 203+77, 22'L

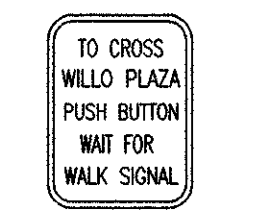
PHASING DIAGRAM



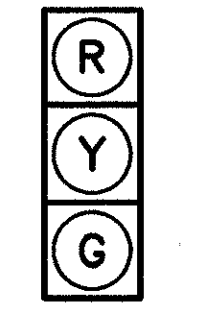
- PROP. 8' PEDESTAL, P2 WITH PEDESTRIAN SIGNALS AND PUSHBUTTONS STA 202+88, 23'R
- REMOVE EXIST. POLE AND PEDESTRIAN SIGNALS STA 202+96, 23'R
- PROP. PULLBOX, PB3 STA 202+99, 23'R
- PROP. PULLBOX, PB2 STA 203+54, 23'R
- PROP. SIGNAL SUPPORT, P1 TYPE TC-81.20 DES. 4 WITH MAST ARMS TYPE TC-81.20 DES. 3, 33' AND TYPE TC-81.20 DES. 1, 30' WITH PEDESTRIAN SIGNAL AND PUSHBUTTON STA 203+60, 27'R
- REMOVE EXIST. POLE AND PEDESTRIAN SIGNAL STA 203+64, 26'R
- PROP. PULLBOX, PB1 STA 203+94, 22'R



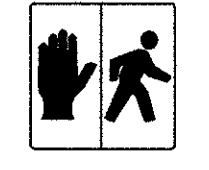
R-73A-9 QTY. = 2



R-73A-9 QTY. = 2



TYPE "D-2"



ALL S - S T - T ALL HEADS ARE 12" POLY

PED SIGNS

SIGNALS