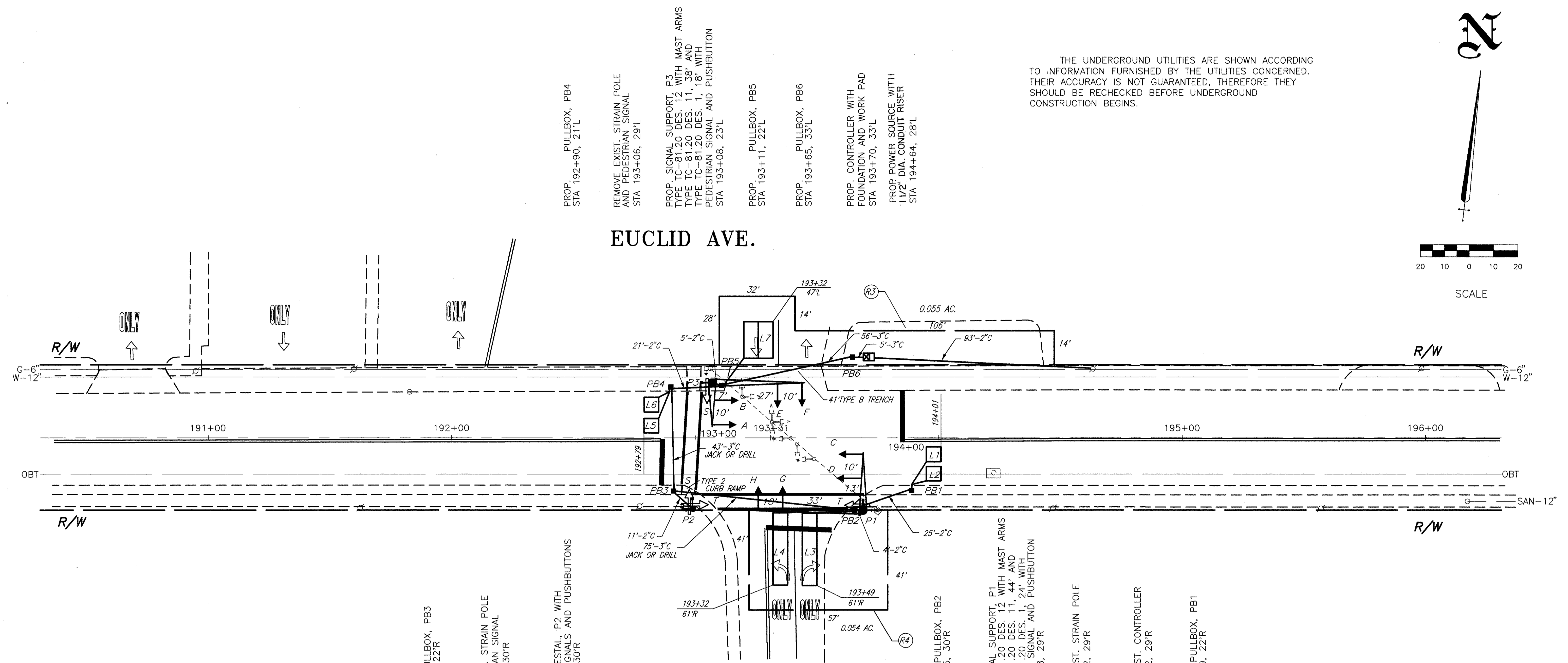


THE UNDERGROUND UTILITIES ARE SHOWN ACCORDING TO INFORMATION FURNISHED BY THE UTILITIES CONCERNED. THEIR ACCURACY IS NOT GUARANTEED, THEREFORE THEY SHOULD BE RECHECKED BEFORE UNDERGROUND CONSTRUCTION BEGINS.

## EUCLID AVE.



PROP. PULLBOX, PB4  
STA 192+90, 21'L

REMOVE EXIST. STRAIN POLE AND PEDESTRIAN SIGNAL  
STA 193+06, 29'L

PROP. SIGNAL SUPPORT, P3  
TYPE TC-81.20 DES. 12 WITH MAST ARMS  
TYPE TC-81.20 DES. 11, 38' AND  
TYPE TC-81.20 DES. 1, 18' WITH  
PEDESTRIAN SIGNAL AND PUSHBUTTON  
STA 193+08, 23'L

PROP. PULLBOX, PB5  
STA 193+11, 22'L

PROP. PULLBOX, PB6  
STA 193+65, 33'L

PROP. CONTROLLER WITH FOUNDATION AND WORK PAD  
STA 193+70, 33'L

PROP. POWER SOURCE WITH 1/2" DIA. CONDUIT RISER  
STA 194+64, 28'L

## LAKE COUNTY MEDICAL HOSPITAL WEST

PROP. PULLBOX, PB3  
STA 192+91, 22'R

REMOVE EXIST. STRAIN POLE AND PEDESTRIAN SIGNAL  
STA 192+96, 30'R

PROP. 8' PEDESTAL, P2 WITH PEDESTRIAN SIGNALS AND PUSHBUTTONS  
STA 192+99, 30'R

PROP. PULLBOX, PB2  
STA 193+65, 30'R

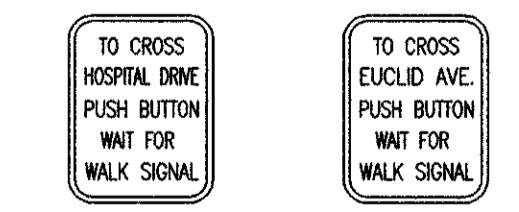
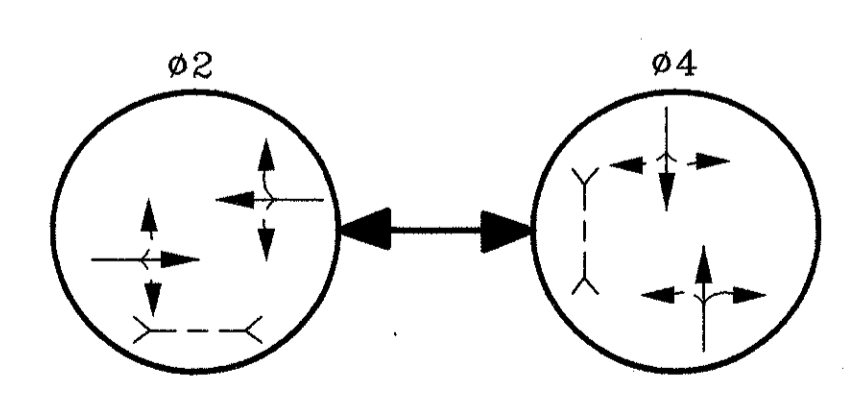
PROP. SIGNAL SUPPORT, P1  
TYPE TC-81.20 DES. 12 WITH MAST ARMS  
TYPE TC-81.20 DES. 11, 44' AND  
TYPE TC-81.20 DES. 1, 24' WITH  
PEDESTRIAN SIGNAL AND PUSHBUTTON  
STA 193+68, 29'R

REMOVE EXIST. STRAIN POLE  
STA 193+72, 29'R

REMOVE EXIST. CONTROLLER  
STA 193+72, 29'R

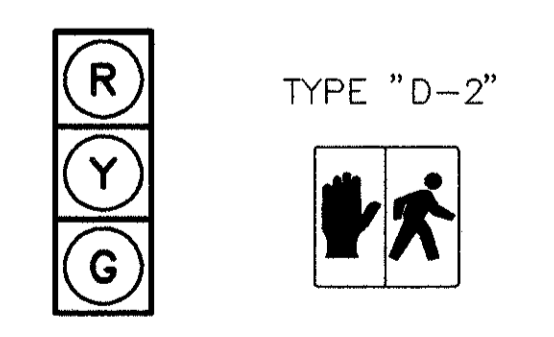
PROP. PULLBOX, PB1  
STA 193+89, 22'R

PHASING DIAGRAM



R-73A-9 QTY. = 2  
R-73A-9 QTY. = 2

PED SIGNS



A, B, C, D, S - S  
E, F, G & H, T - T  
ALL HEADS ARE 12" POLY

SIGNALS