

NOTES:
 1. ALL ANGLES MEASURED CLOCKWISE.
 2. BASE PLATE IS ORIENTED SQUARE TO MAST ARM A (LARGEST ARM) EVEN IF SUPPORT HAS TWO MAST ARMS.

SUPPORT NO.	SIGNAL SUPPORT		FOUNDATION					ORIENTATION ANGLES (DEG.) FROM MAST ARM "A"										
	TC-81.20	TC-12.30	STATION	OFFSET	L (FT.)	L1 (FT.)	L2 (FT.)	L3 (FT.)	X1 (FT.)	MAST ARM A ANGLE (DEG.)	MAST ARM B ANGLE (DEG.)	PED. SIGNALS	PED. PUSH BUTTONS	POWER SERVICE	CONTROLLER	LUMINAIRE BRACKET	HANDHOLE	CABLE ENTRANCE (12" FROM TOP)
P1 PED			165+53	44'L						0	90	180						
P2 PED			165+41	32'R						0	90	180						
P3 11	4	20	165+18	33'R	37	25	36			270								
P4 2	2	20	164+75	32'L	28	17	27			90								
P5 PED			164+97	51'L						0	0	0						

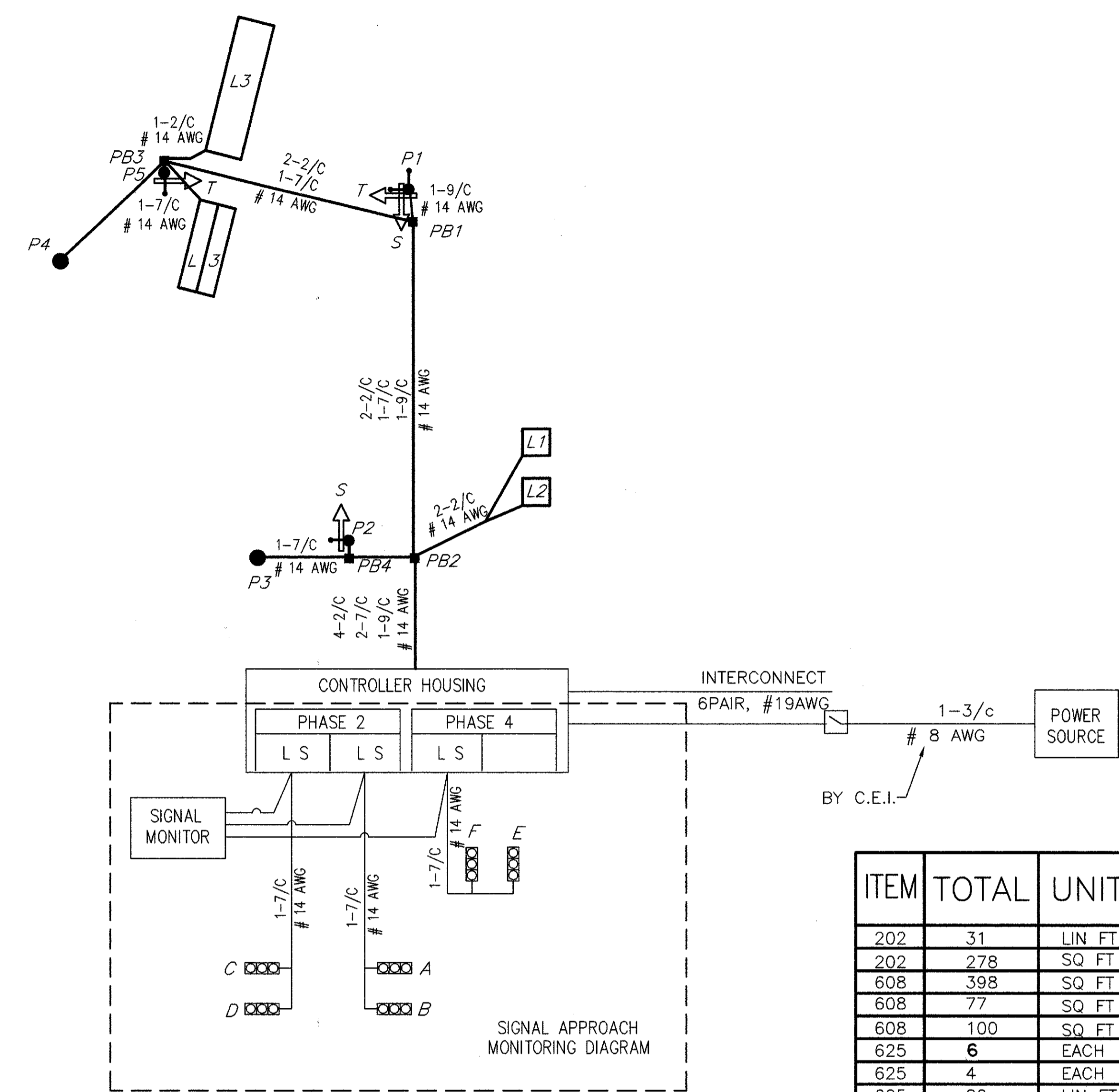
ORIENTATION ANGLE CHART

FUNCTION	ø2	ø4
MINIMUM GREEN	20	8
PED WALK	7	7
PED CLEARANCE	10	14
GREEN EXTENSION	-	3.5
MAXIMUM GREEN	55	25
YELLOW CLEARANCE	3.6	3.1
ALL RED CLEARANCE	1.6	1.7
RECALL	PED	NONE

SIGNAL TIMING

SIGNAL HEAD	ø2				ø4				FLASH
	R/W	CLEAR	R/W	CLEAR	R/W	CLEAR	R/W	CLEAR	
A	G	G	Y	R	R	R	R	R	Y
B	G	G	Y	R	R	R	R	R	Y
C	G	G	Y	R	R	R	R	R	Y
D	G	G	Y	R	R	R	R	R	Y
E	R	R	R	R	G	G	Y	R	R
F	R	R	R	R	G	G	Y	R	R
S-S	DW	DW	DW	DW	W	FDW	DW	DW	DARK
T-T	W	FDW	DW	DW	DW	DW	DW	DW	DARK

SIGNAL DISPLAY CHART



WIRING DIAGRAM

NOTES:
 1. PHASE SPLITS SHALL INCLUDE ALL GREEN PLUS YELLOW & ALL RED
 2. PERMISSIVES SHALL START AT THE ZERO POINT OF THE CYCLE
 3. OFFSETS SHALL BE REFERENCED TO THE BEGINNING OF PHASE 2 YELLOW

	DIAL 1	DIAL 2	DIAL 3
CYCLE LENGTH	85	100	120
PHASE 2 SPLIT	78 %	85 %	74 %
PHASE 4 SPLIT	22 %	15 %	26 %
PERMISSIVE	15 %	15 %	15 %
OFFSET	68 %	36 %	20 %
TIME OF DAY SCHEDULE	ALL OTHER TIMES	6:30AM TO 9:00AM MON-SAT	3:30PM TO 6:30PM MON-SAT

COORDINATION TIMING

ITEM	TOTAL	UNIT	DESCRIPTION
202	31	LIN FT	CURB REMOVED
202	278	SQ FT	WALK REMOVED
608	398	SQ FT	4" CONCRETE WALK
608	77	SQ FT	CURB RAMP, TYPE 1
608	100	SQ FT	CURB RAMP, TYPE 2
625	6	EACH	GROUND ROD
625	4	EACH	PULLBOX, MISC; AS PER PLAN
625	82	LIN FT	CONDUIT, 2", 713.04
625	4	LIN FT	CONDUIT, 3", 713.04
625	130	LIN FT	CONDUIT, JACKED OR DRILLED UNDER PAVEMENT, 3"
625	76	LIN FT	TRENCH
630	12	LIN FT	GROUND MOUNTED SUPPORT, NO. 3 POST
630	6	LIN FT	SIGN, FLAT SHEET, TYPE G
630	1	EACH	REMOVAL OF GROUND MOUNTED SIGN & STORAGE
630	1	EACH	REMOVAL OF GROUND MOUNTED POST SUPPORT & DISPOSAL
632	6	EACH	VEHICULAR SIGNAL HEAD, 3 SECT., 12" LENS, 1-WAY, AS PER PLAN
632	4	EACH	PEDESTRIAN SIGNAL HEAD, TYPE D2
632	4	EACH	PEDESTRIAN PUSHBUTTON
632	2	EACH	LOOP DETECTOR UNIT, AS PER PLAN
632	2	EACH	LOOP DETECTOR UNIT, DELAY AND EXTENSION TYPE, AS PER PLAN
632	5.49	CU YD	CONCRETE FOR ANCHOR BASE FOUNDATION
632	1	EACH	SIGNAL SUPPORT, TYPE TC-81.20, DES. 2, WITH 28' ARM
632	1	EACH	SIGNAL SUPPORT, TYPE TC-81.20, DES. 11 WITH MAST ARMS TYPE TC-81.20 DES. 4, 37' AND TYPE TC-81.20, DES. 2, 28'
632	3	EACH	PEDESTAL, 8", TRANSFORMER BASE
632	2	EACH	CABLE SUPPORT ASSEMBLY
632	231	LIN FT	LOOP DETECTOR PAVEMENT CUTTING
632	756	LIN FT	SIGNAL CABLE, 7 CONDUCTOR, NO. 14 AWG
632	143	LIN FT	SIGNAL CABLE, 9 CONDUCTOR, NO. 14 AWG
632	682	LIN FT	LOOP DETECTOR WIRE, TYPE E
632	336	LIN FT	LOOP DETECTOR LEAD-IN CABLE
632	45	LIN FT	POWER CABLE, 3 CONDUCTOR, NO. 8 AWG
632	1	EACH	CONDUIT RISER, 1 1/2"
632	6	EACH	COVERING OF VEHICULAR SIGNAL HEAD
633	8.3	SQ FT	CONTROLLER WORK PAD
633	.99	CU YD	CONCRETE FOR CABINET FOUNDATION
633	1	EACH	CONTROLLER, ACTUATED, 4 PHASE SOLID STATE DIGITAL MICROPROCESSOR, AS PER PLAN
642	66	LIN FT	STOP LINE, TYPE 2
642	216	LIN FT	CROSSWALK LINE, TYPE 2

LOOP #	SIZE	# TURNS	MODE	DELAY	UNIT #	PHASE
L1	6' x 6'	3	PRESENCE	0	1	SYSTEM
L2	6' x 6'	3	PRESENCE	0	2	SYSTEM
L3	8' x 30'	2	PRESENCE	8	3	4
L4	8' x 20'	2-4-2	PRESENCE	8	4	4

LOOP DETECTOR CHART