

WILLOUGHBY CITY SIGNALS, LAKE COUNTY  
LAK 20784/640

NO 2 INTERSECTION GROUP FOR TRAFFIC RESPONSIVE MASTER CONTROL.

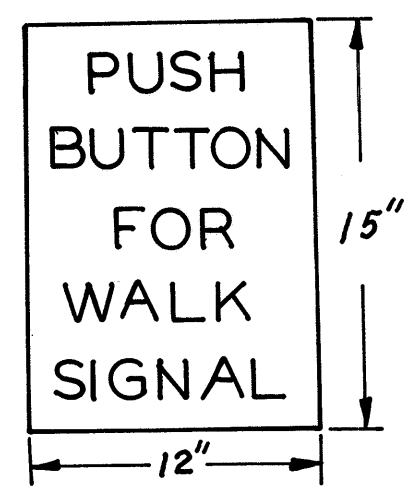
- VINE ST. @ LAKELAND BLVD.
- VINE ST. @ BEN-HUR DR.
- VINE ST. @ SKIFF ST.
- VINE ST. @ CHURCH ST.
- VINE ST. @ CLARK ST.
- EUCLID AVE @ WILSON & PARK AVE.
- EUCLID AVE @ ERIE & SPAULDING ST.
- ERIE ST. @ GLENN AVE.
- ERIE ST. @ VINE ST.
- EUCLID AVE @ BROWN & GROVE AVE.

LIGHT UNIT	Ø I	TO	Ø II	TO	Ø III	TO
A, B, C, D	Gr.	Am.	Re.			
A <sub>2</sub> , B <sub>2</sub> , C <sub>2</sub> , D <sub>2</sub>	Re.		Gr.	Am.		
A <sub>1</sub> , B <sub>1</sub> , C <sub>1</sub> , D <sub>1</sub>	FLASHING AMBER					
A <sub>2</sub> , B <sub>2</sub> , C <sub>2</sub> , D <sub>2</sub>	FLASHING RED					
1a, 2a	WA-FLASHING DON'T WALK					
3a, 4a	LK DON'T WALK					
1a, 2a	DON'T WALK		WA-FLASHING LK DON'T WALK			
3a, 4a	WALK					

0.31 Mi.

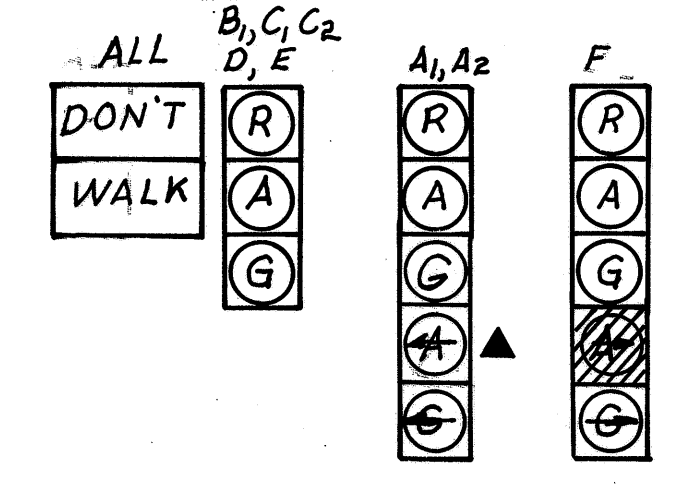
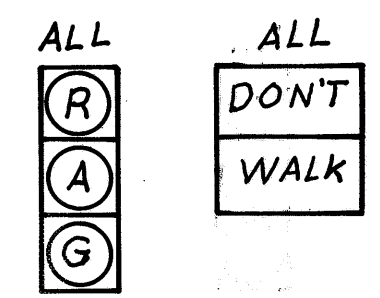
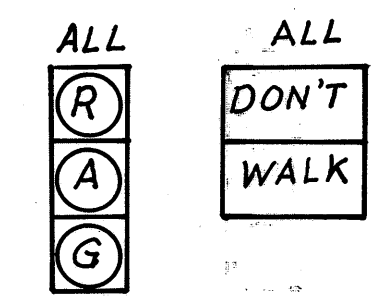
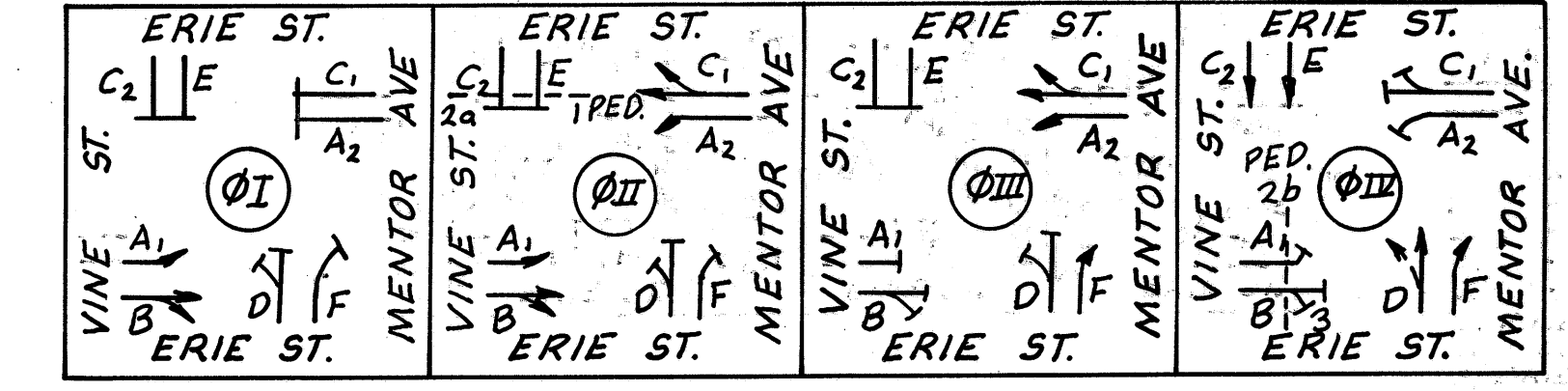
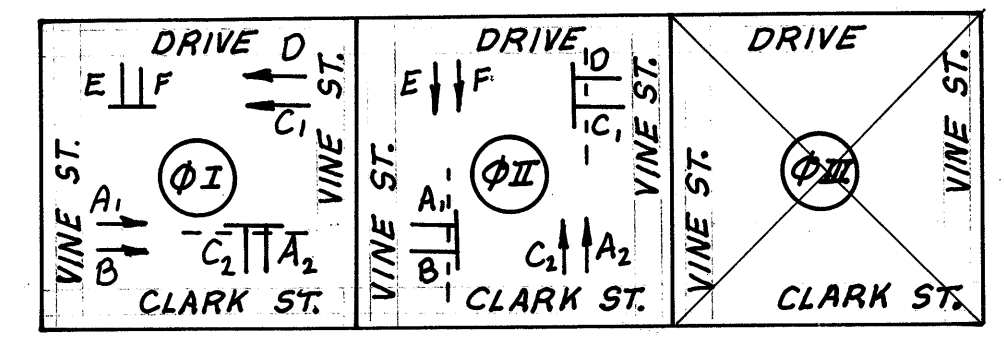
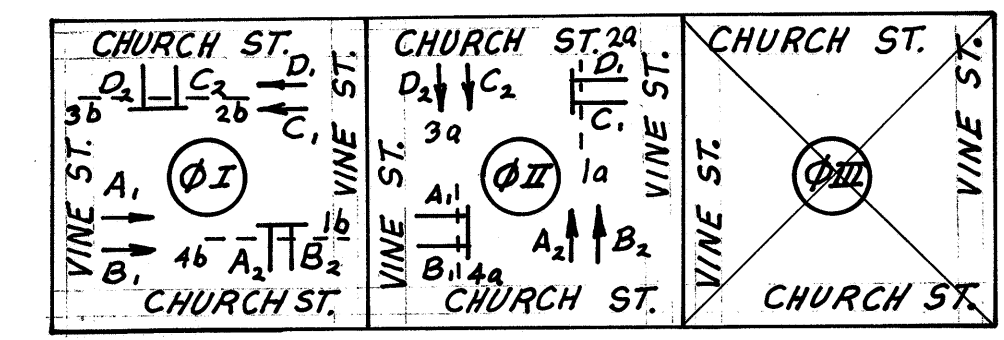
SPECIFICATION ITEM	DESCRIPTION	QUANTITY UNITS	VINE ST. AT CHURCH ST.	VINE ST. AT CLARK ST.	VINE ST. AT ERIE ST.	TOTAL QUANTITIES
621	2-4" SOLID YELLOW	LF.	600	450	600	1650
621	2-4" SOLID & BROKEN YEL	LF.	-	-	-	-
621	1-4" DOTTED YELLOW	LF.	-	-	-	-
621	4" WHITE LANE LINE	LF.	-	-	-	-
621	4" DOTTED LANE LINE	LF.	-	-	-	-
621	8" CHANNELIZING LINE	LF.	-	-	450	450
621	6" CROSSWALK LINE	LF.	280	230	190	700
621	24" STOP LINE	LF.	85	80	90	255
621	24" YEL BROAD TRANSV LINE	LF.	-	-	-	-
621	LANE ARROW	EA.	-	-	6	6
621	WORD ON PAVEMENT, AS PER PLAN	EA.	-	-	6	6
815	SIGNS, FLAT SHEET TYPE	SF.	-	-	54.0	54.0
816	STRUCT SUPT 4LB POST DRIVEN	LF.	-	-	75.0	75.0
816	POLE MOUNTED SIGN ATTACHMENT	EA.	-	-	1	1

LIGHT UNIT	Ø I	TO	Ø II	TO	Ø III	TO
A, B, C, D	Gr.	Am.	Re.			
A <sub>2</sub> , B <sub>2</sub> , C <sub>2</sub> , D <sub>2</sub>	Re.		Gr.	Am.		
A <sub>1</sub> , B <sub>1</sub> , C <sub>1</sub> , D <sub>1</sub>	FLASHING AMBER					
A <sub>2</sub> , B <sub>2</sub> , C <sub>2</sub> , D <sub>2</sub>	FLASHING RED					
1a, 2a	DON'T WALK		WA-FLASHING LK DON'T WALK			
3a, 4a	WALK					



OHIO D.O.T. NO. R 73-12  
(1 SIGN WITH EACH PED. PUSH BUTTON)

LIGHT UNIT	Ø I	TO	Ø II	TO	Ø III	TO	Ø IV	TO
A <sub>1</sub>	Gr.	Am.	Gr.	Am.	Re.			Re.
B	Gr.		Gr.	Am.	Re.			Re.
C <sub>1</sub>	Re.		Gr.		Gr.	Am.		Re.
A <sub>2</sub>	Re.		Gr.	Gr.	Gr.	Am.		Re.
C <sub>2</sub> , E	Re.		Re.		R			Gr.
D	Re.		Re.		Re.			Gr. Am.
F	Re.		Re.		Re.			Gr. Am.
3, 2b	DON'T WALK		WALK	FLASHING DON'T WALK	DON'T WALK			DON'T WALK
2a, 1	DON'T WALK		DON'T WALK		DON'T WALK			WALK
A <sub>1</sub> , B, C, A <sub>2</sub>	FLASHING AMBER							
C <sub>2</sub> , E, F	FLASHING RED							



Poles at this intersection (0 Ga. 13" x 28')

