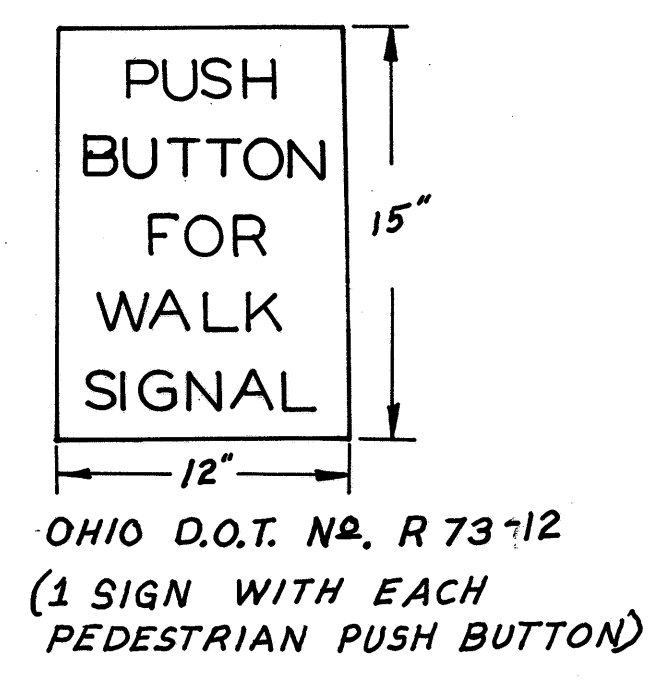


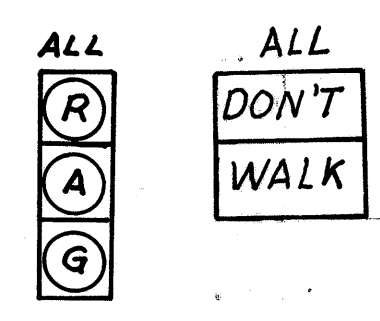
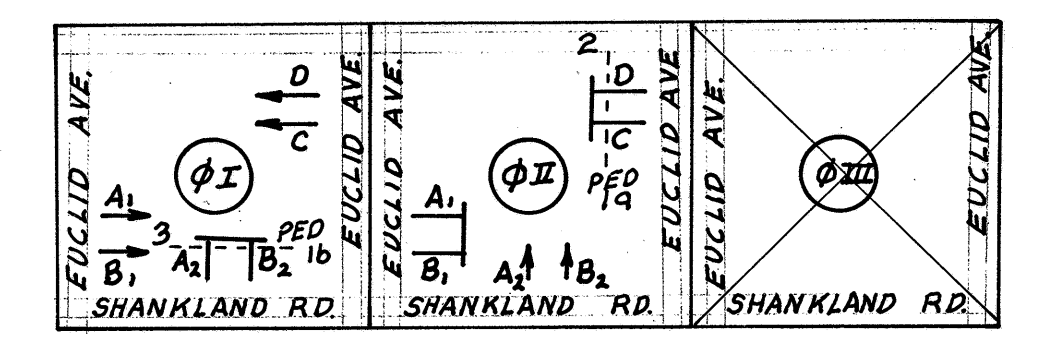
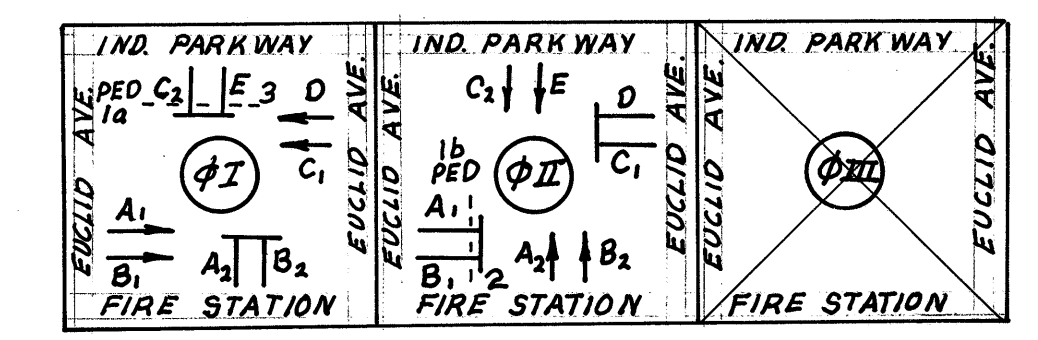
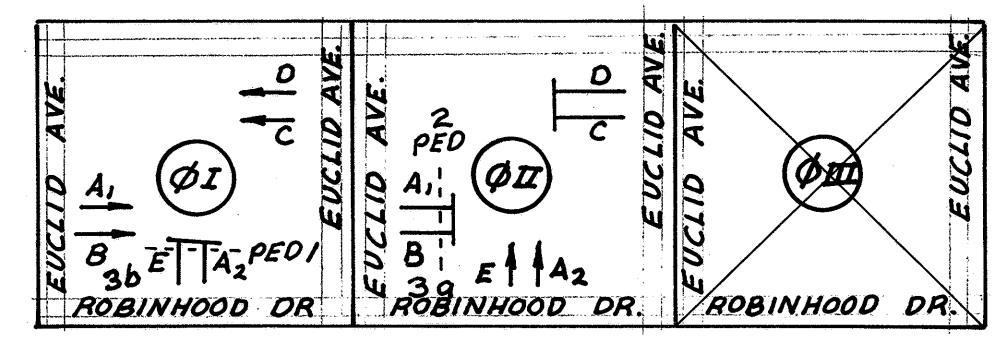
LIGHT UNIT	Φ I	TO	Φ II	TO	Φ III	TO
A, B, C, D	Gr.	Am.	Re.			
A, E	Re.		Gr.	Am.		
A, B, C, D	FLASHING AMBER					
A, E	FLASHING RED					
3b	DON'T WALK		WALK	FLASHING DON'T WALK		
3a	WALK	FLASHING DON'T WALK				



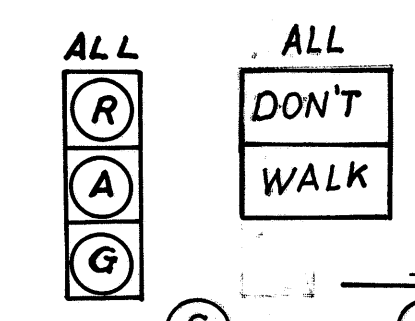
LIGHT UNIT	Φ I	TO	Φ II	TO	Φ III	TO
A, B, C, D	Gr.	Am.	Re.			
A, B, C, E	Re.		Gr.	Am.		
A, B, C, D	FLASHING AMBER					
A, B, C, E	FLASHING RED					
1a	DON'T WALK		WALK	FLASHING DON'T WALK		
3	WALK	FLASHING DON'T WALK				

SPECIFICATION ITEM	DESCRIPTION	QUANTITY UNITS	EUCLID AVE. AT ROBINHOOD DR.	EUCLID AVE. AT INDUSTRIAL PARKWAY	EUCLID AVE. AT SHANKLAND RD.	TOTAL QUANTITIES
621	2-4" SOLID YELLOW C	L.F.	450	450	450	1350
621	2-4" SOLID & BROKEN YEL C	L.F.	-	-	-	-
621	1-4" DOTTED YELLOW C	L.F.	-	-	-	-
621	4" LANE LINE	L.F.	-	-	-	-
621	4" DOTTED LANE LINE	L.F.	-	-	-	-
621	8" CHANNELIZING LINE	L.F.	-	-	-	-
621	6" CROSSWALK LINE	L.F.	235	190	195	620
621	24" STOP LINE	L.F.	55	65	60	180
621	24" YEL. BROAD. TRANSV. LINE	L.F.	-	-	-	-
621	LANE ARROW	EA.	-	-	-	-
621	SIGN ON PAVEMT, AS PER PLAN	EA.	-	-	-	-
815	SIGN FLAT SHEET TYPE	L.F.	5	5	5	15
816	STRUCT SUPT 4LB POSTDRIVEN	L.F.	-	14.5	-	14.5
816	POLE MOUNTED SIGN ATTACHMT	EA.	1	-	1	2

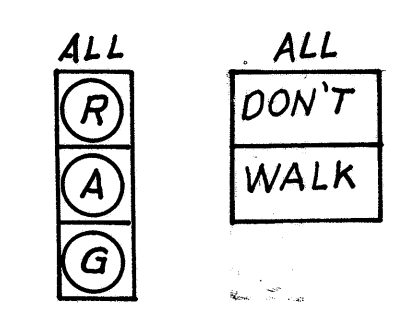
LIGHT UNIT	Φ I	TO	Φ II	TO	Φ III	TO
A, B, C, D	Gr.	Am.	Re.			
A, B, C	Re.		Gr.	Am.		
A, B, C, D	FLASHING AMBER					
A, B, C	FLASHING RED					
3	DON'T WALK		WALK	FLASHING DON'T WALK		
2	WALK	FLASHING DON'T WALK				



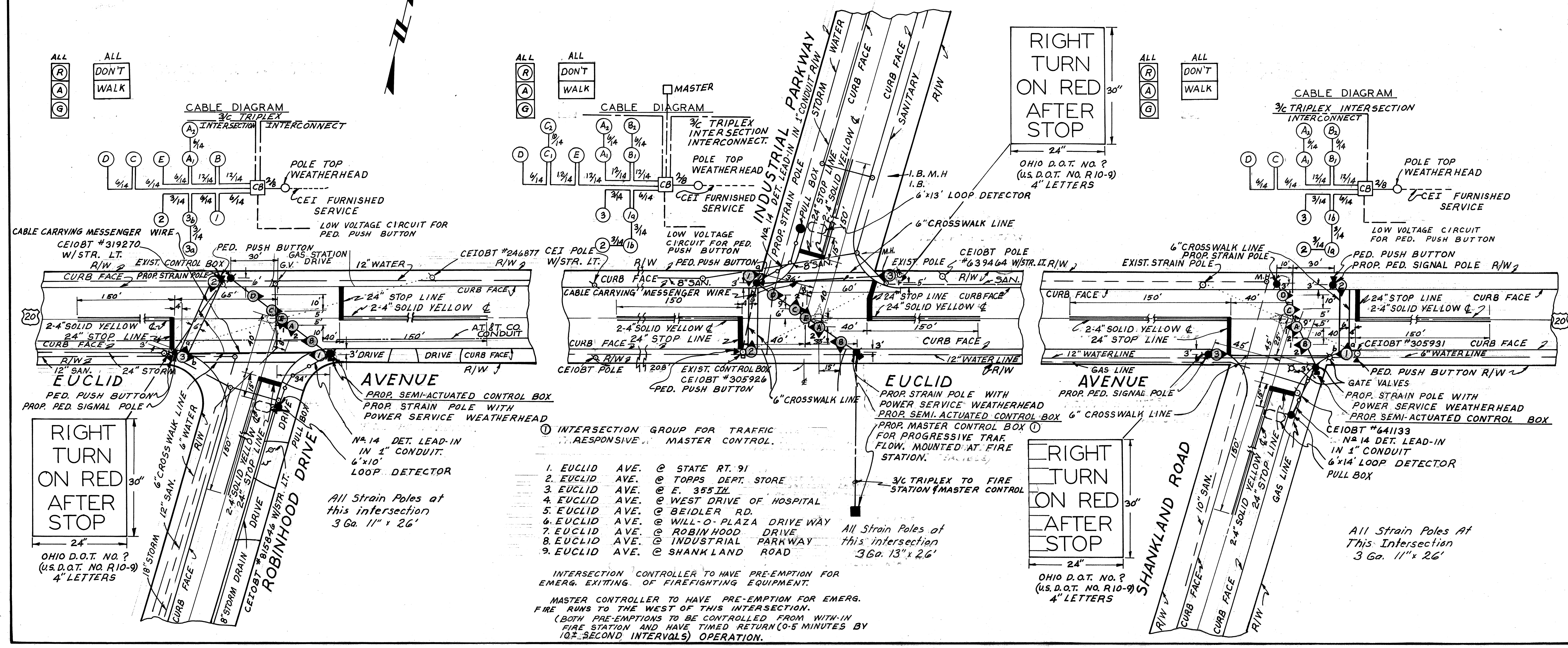
CABLE DIAGRAM
3/4" TRIPLEX INTERCONNECT



CABLE DIAGRAM
3/4" TRIPLEX INTERCONNECT



CABLE DIAGRAM
3/4" TRIPLEX INTERCONNECT



- ① INTERSECTION GROUP FOR TRAFFIC RESPONSIVE MASTER CONTROL.
1. EUCLID AVE. @ STATE RT. 91
 2. EUCLID AVE. @ TOPPS DEPT. STORE
 3. EUCLID AVE. @ E. 355TH
 4. EUCLID AVE. @ WEST DRIVE OF HOSPITAL
 5. EUCLID AVE. @ BEIDLER RD.
 6. EUCLID AVE. @ WILL-O-PLAZA DRIVE WAY
 7. EUCLID AVE. @ ROBINHOOD DRIVE
 8. EUCLID AVE. @ INDUSTRIAL PARKWAY
 9. EUCLID AVE. @ SHANKLAND ROAD

INTERSECTION CONTROLLER TO HAVE PRE-EMPTION FOR EMERG. EXITING OF FIREFIGHTING EQUIPMENT.
MASTER CONTROLLER TO HAVE PRE-EMPTION FOR EMERG. FIRE RUNS TO THE WEST OF THIS INTERSECTION.
(BOTH PRE-EMPTIONS TO BE CONTROLLED FROM WITHIN FIRE STATION AND HAVE TIMED RETURN (0.5 MINUTES BY 10% SECOND INTERVALS) OPERATION.