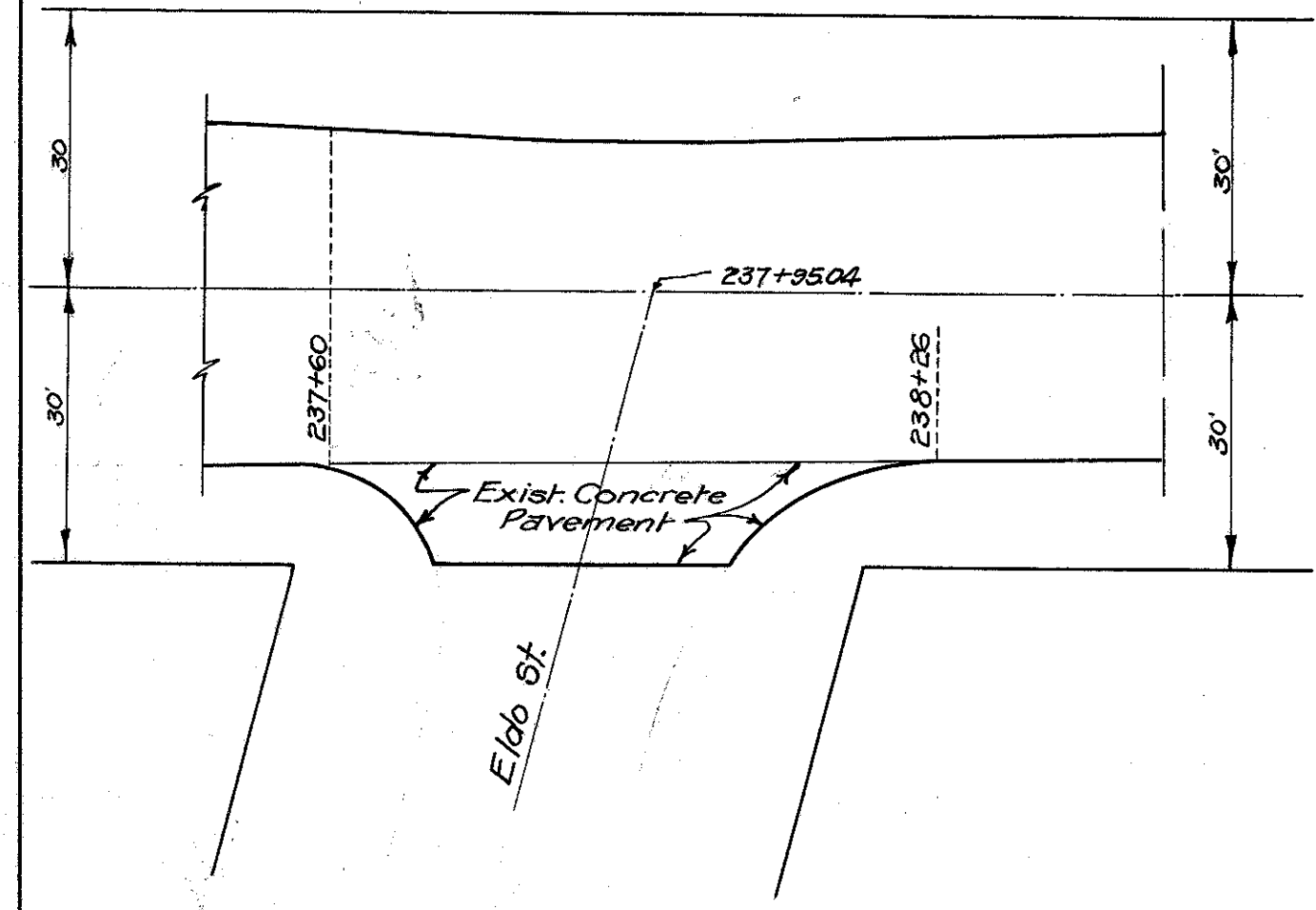
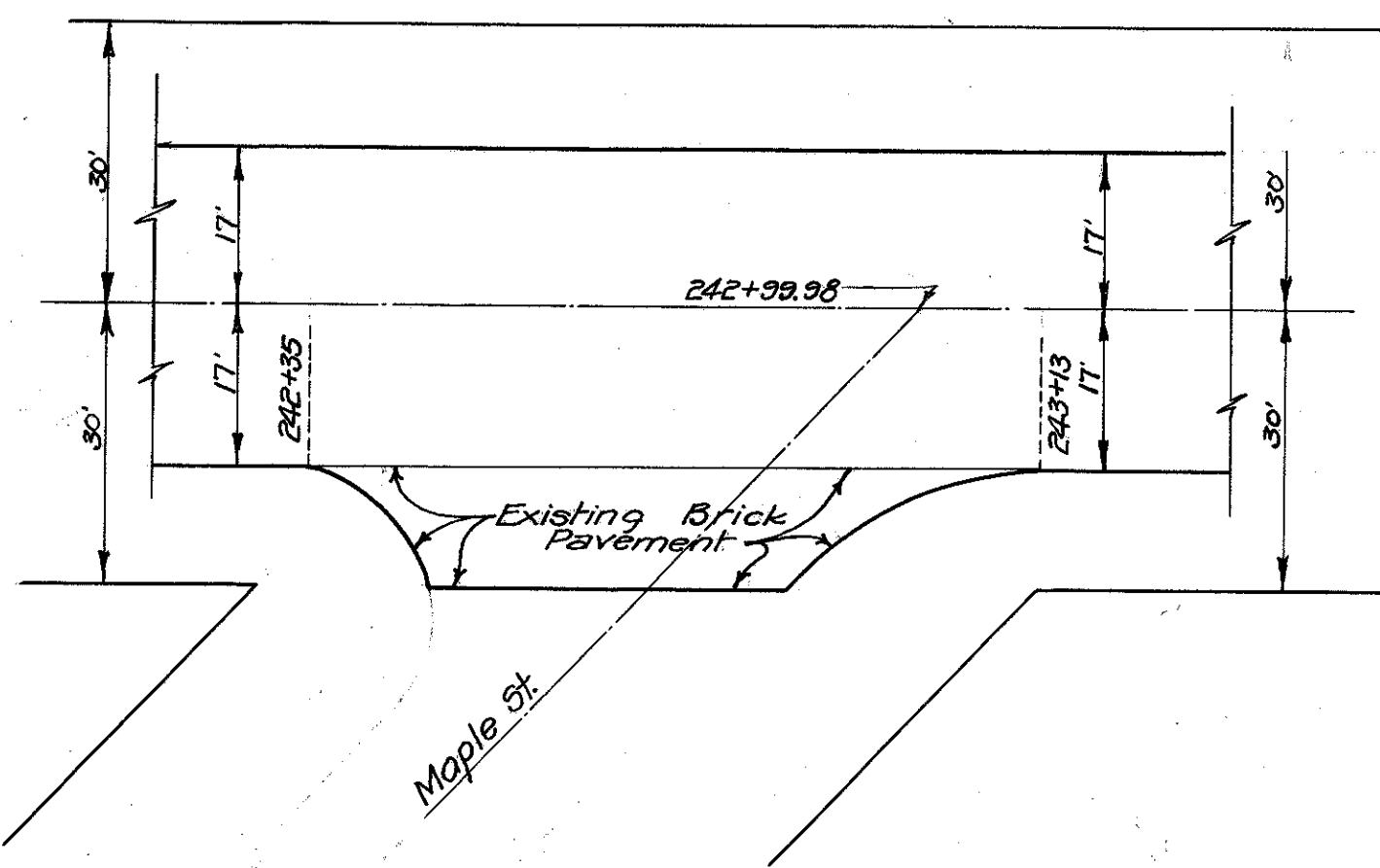


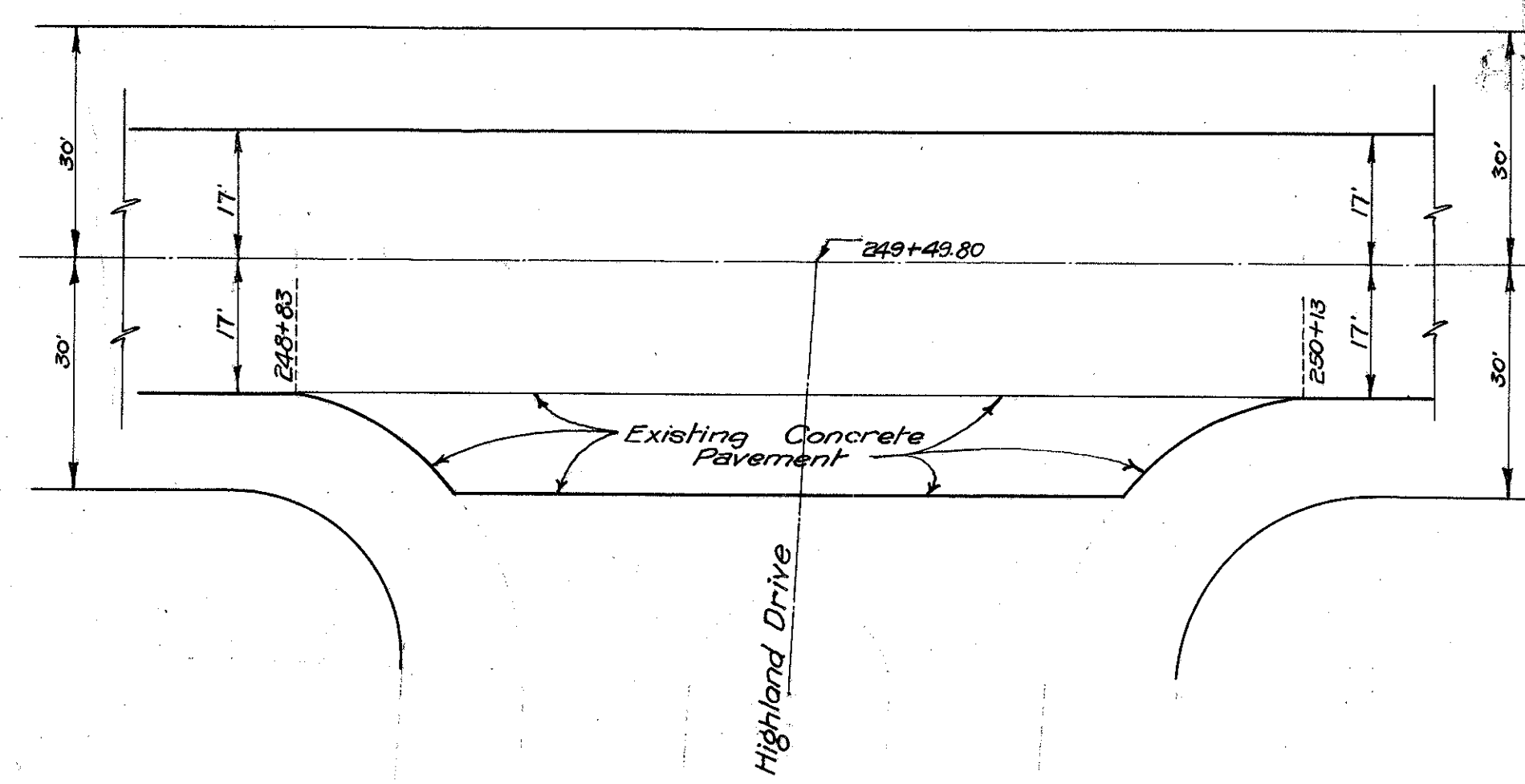
U.S. PUBLIC WORKS  
HIGHWAY PROJECT NO.



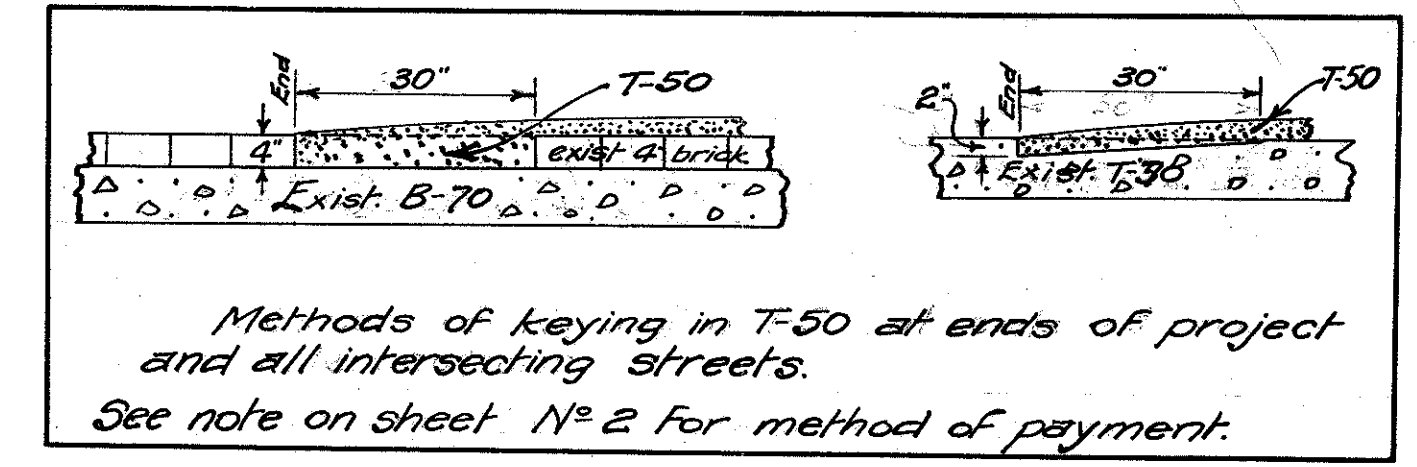
Intersection at Eldo Street  
Station 237+95.04  
57 Sq.Yds. 2 1/2" Bit. Surface T-50  
Scale 1"=20'



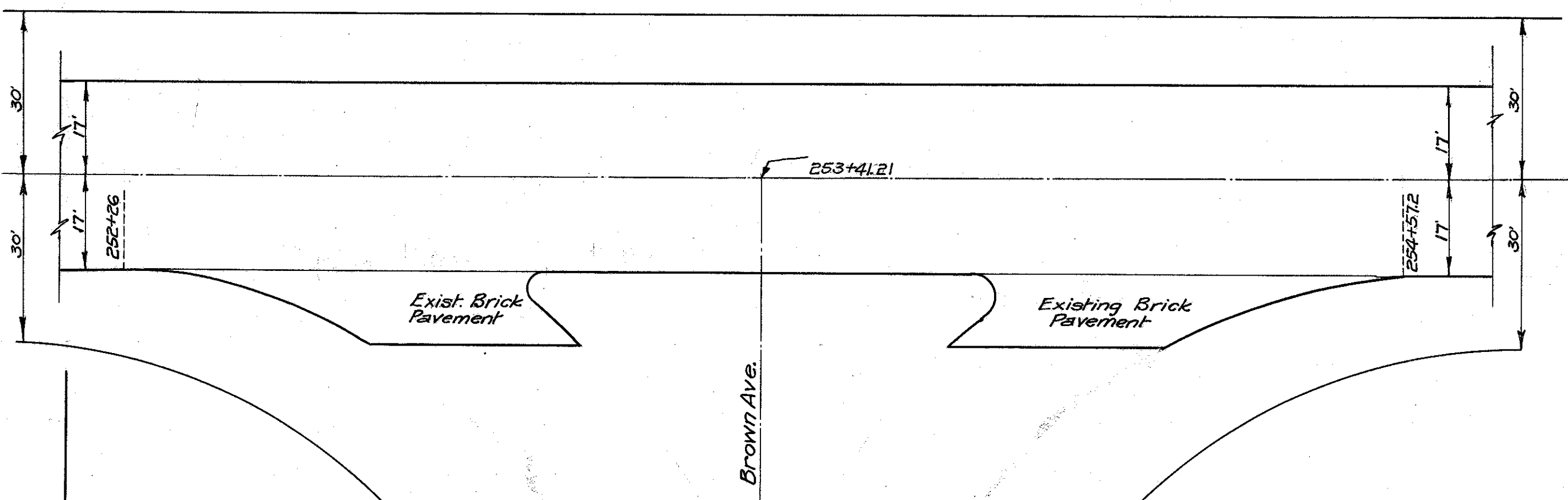
Intersection at Maple Street  
Station 242+99.98  
74 Sq.Yds. 2 1/2" Bit. Surface T-50  
Scale 1"=20'



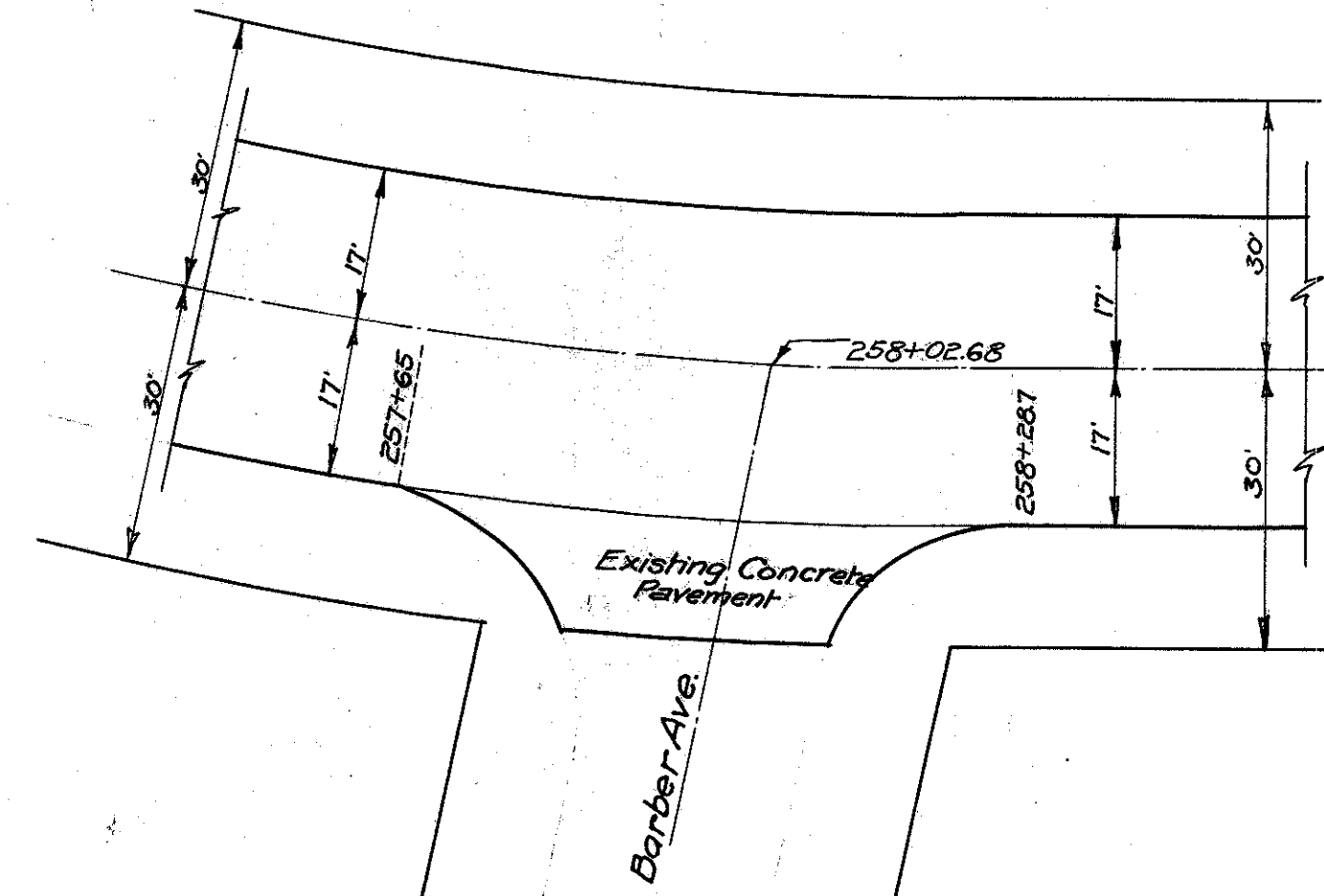
Intersection at Highland Drive  
Station 249+43.80  
145 Sq.Yds. 2 1/2" Bit. Surface T-50  
Scale 1"=20'



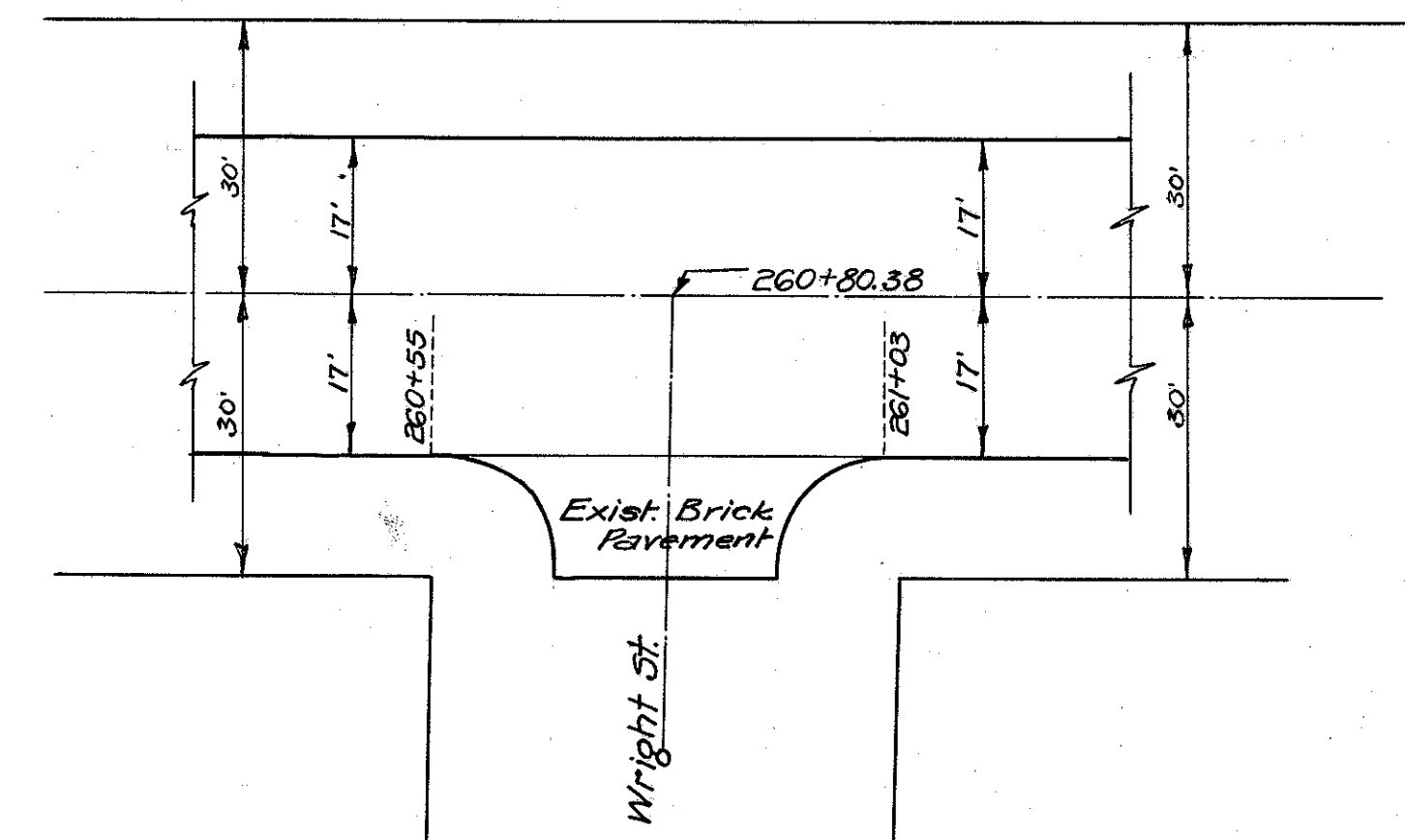
Methods of keying in T-50 at ends of project and all intersecting streets.  
See note on sheet N° 2 for method of payment.



Intersection at Brown Ave.  
Station 253+41.21  
138 Sq.Yds. 2 1/2" Bit. Surface T-50  
Scale 1"=20'



Intersection at Barber Ave.  
Station 258+02.68  
57 Sq.Yds. 2 1/2" Bit. Surface T-50  
Scale 1"=20'



Intersection at Wright Street  
Station 260+80.38  
4.1 Sq.Yds. 2 1/2" Bit. Surface  
Scale 1"=20'