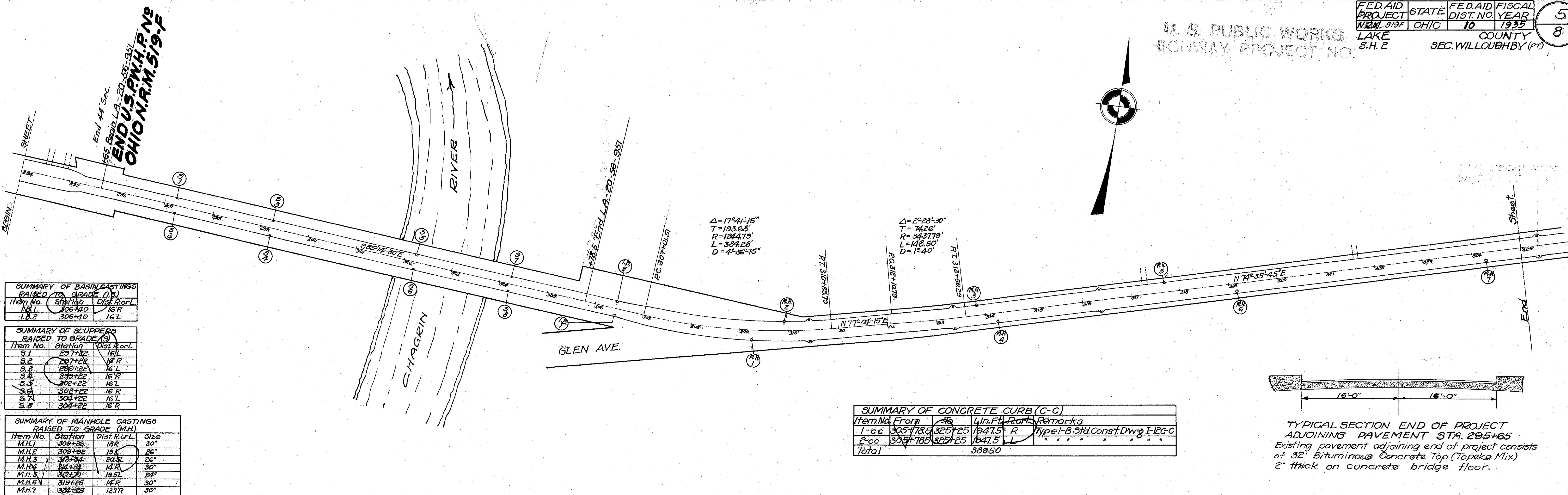


U. S. PUBLIC WORKS
HIGHWAY PROJECT NO.

SCH. H.A.C. 1-34 4-34

196



SUMMARY OF BASIN CASTINGS RAISED TO GRADE (B)

Item No.	Station	Dist. R or L
B.1	306+40	16' R
B.2	306+40	16' L

SUMMARY OF SCUPPERS RAISED TO GRADE (S)

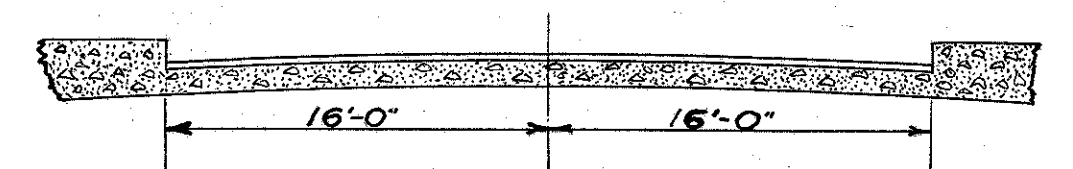
Item No.	Station	Dist. R or L
S.1	297+32	16' L
S.2	297+32	16' R
S.3	299+22	16' L
S.4	299+22	16' R
S.5	302+22	16' L
S.6	302+22	16' R
S.7	304+22	16' L
S.8	304+22	16' R

SUMMARY OF MANHOLE CASTINGS RAISED TO GRADE (M.H.)

Item No.	Station	Dist. R or L	Size
M.H.1	309+26	18' R	30"
M.H.2	309+32	19'	26"
M.H.3	305+34	20.3'	26"
M.H.4	314+38	14' R	30"
M.H.5	317+75	19.5'	24"
M.H.6	319+25	14' R	30"
M.H.7	324+25	13.7' R	30"

SUMMARY OF CONCRETE CURB (C-C)

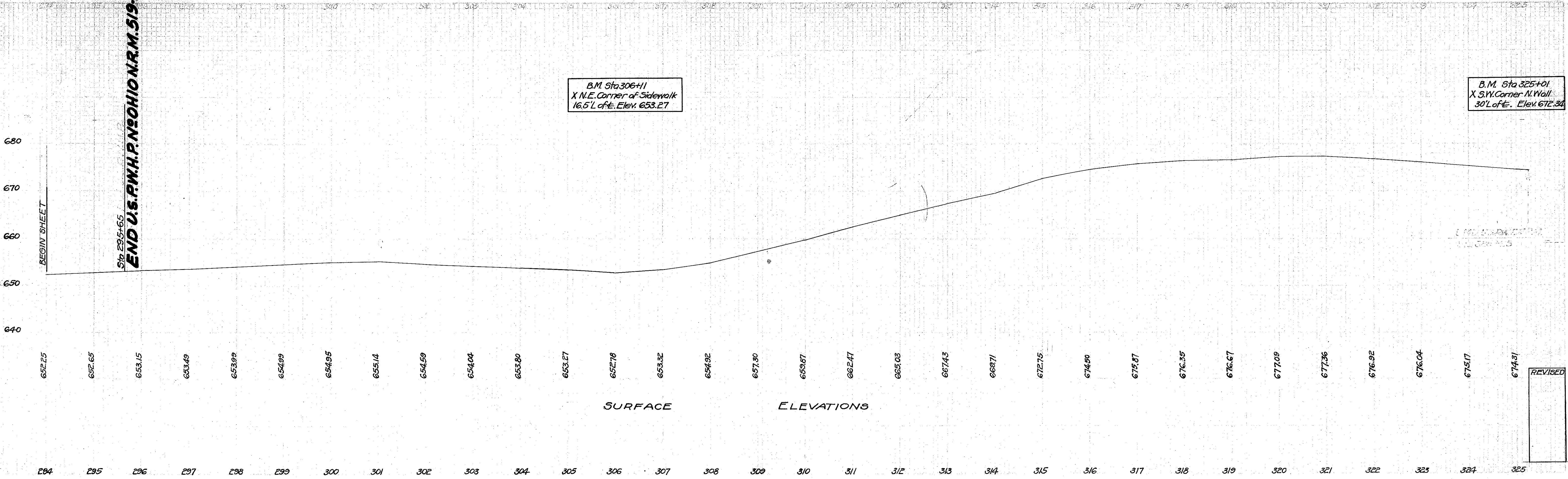
Item No.	From	To	Ln. Ft.	Part	Remarks
C-c	305+78.5	325+25	147.5	R	Type - B Std. Const. D'wg. I-126-C
C-c	305+78.5	325+25	147.5	L	
Total			309.50		



TYPICAL SECTION END OF PROJECT ADJOINING PAVEMENT STA. 295+65
Existing pavement adjoining end of project consists of 32" Bituminous Concrete Top (Topaka Mix) 2" thick on concrete bridge floor.

SCH. H.A.C. 1-34 4-34

196



REVISED