

U.S. PUBLIC WORKS
HIGHWAY PROJECT NO.

SUMMARY OF BASIN CASTINGS RAISED TO GRADE (L.B.)

Item No.	Station	Dist. R.O.L.
L.B.1	275+28	17.1L
L.B.2	275+30	17.8R
L.B.3	278+24	19.1L
L.B.4	278+32	19.2R
L.B.5	281+09	22.4L
L.B.6	281+04	20.6R
L.B.8	281+62	21.2R
L.B.9	282+51	52R
L.B.10	282+78	28.9L
L.B.11	282+95	26R
L.B.12	285+42	25.6R
L.B.13	285+70	26.4L
L.B.14	287+02	25.3R
L.B.15	287+99	25.8R
L.B.18	282+34	22.5R
L.B.19	282+60	22.7L
L.B.20	282+55	34.1R
L.B.21	283+48	23.1R

Total 18

SUMMARY OF MANHOLE CASTINGS RAISED TO GRADE (M.H.)

Item No.	Station	Dist. R.O.L.	Size
M.H.1	263+15	13.5L	30"
M.H.2	265+27	12.4L	24"
M.H.3	268+33	13.1L	30"
M.H.4	269+54	14.5L	24"
M.H.5	272+24	14.5L	24"
M.H.6	273+13	11.9L	30"
M.H.7	275+40	10.1R	24"
M.H.8	276+36	15.3L	24"
M.H.9	277+39	15.5L	30"
M.H.10	278+31	11.4R	28"
M.H.11	281+41	17.6L	24"
M.H.12	283+0	33R	24"
M.H.13	282+67	21.1L	24"
M.H.14	282+25	20R	24"
M.H.15	285+71	15.1R	24"
M.H.16	286+01	27L	30"
M.H.17	287+39	23.5L	28"
M.H.18	287+71	12.5R	24"
M.H.19	289+69	25.6L	30"
M.H.20	292+11	18.5R	24"
M.H.21	293+20	22L	24"
M.H.22	293+08	14.5L	24"

Total 22, M.H. 1-22

SUMMARY OF VALVE BOXES RAISED TO GRADE (V)

Item No.	Station	Dist. R.O.L.
V.1	263+20	6.4R
V.2	263+52	12L
V.3	275+67	18.4L
V.4	282+32	18.1R
V.5	282+68	10.1L
V.6	282+93	42R
V.7	283+40	25L
V.8	286+16	18.5L
V.9	287+13	15.5L
V.10	287+65	25.2L
V.11	287+66	25.2L
V.12	288+64	25.7L
V.13	289+09	24.6L
V.14	292+30	33L

Total 15

SUMMARY OF CONCRETE CURB C-C

Item No.	From	To	Lin. Ft.	Remarks
C-C	286+07	289+88	389	Type I-B 3/8 Const. Dwg. I-EG-C
Total			389	(18' curved & 371' straight)

SUMMARY OF 3" CONCRETE BASE COURSE B-10

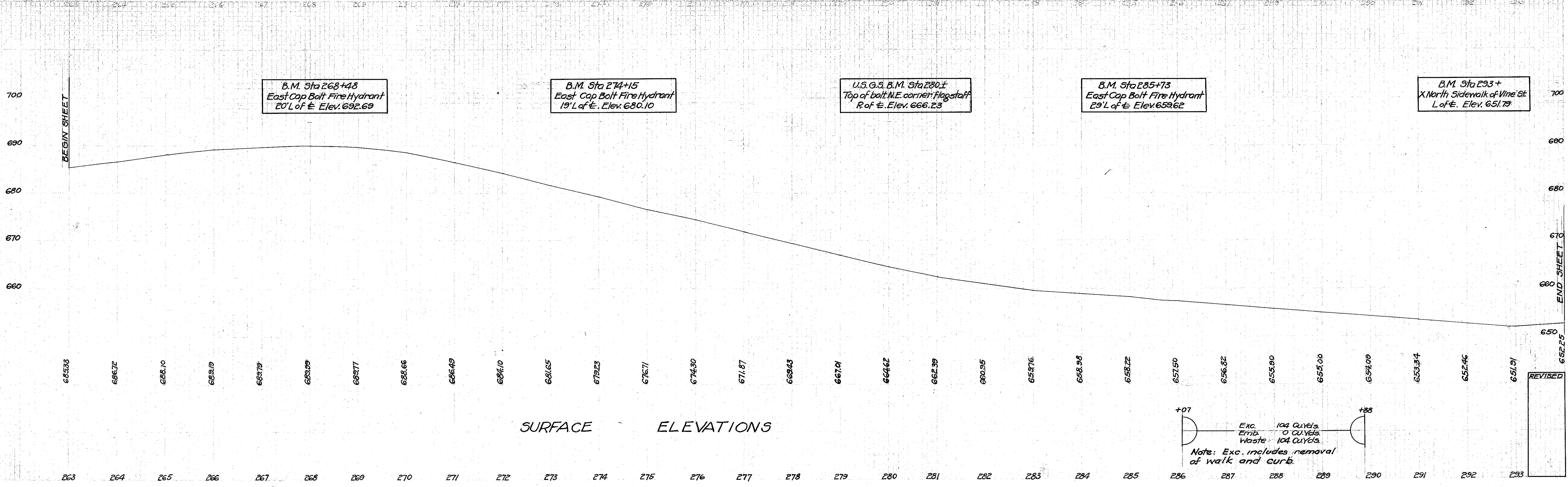
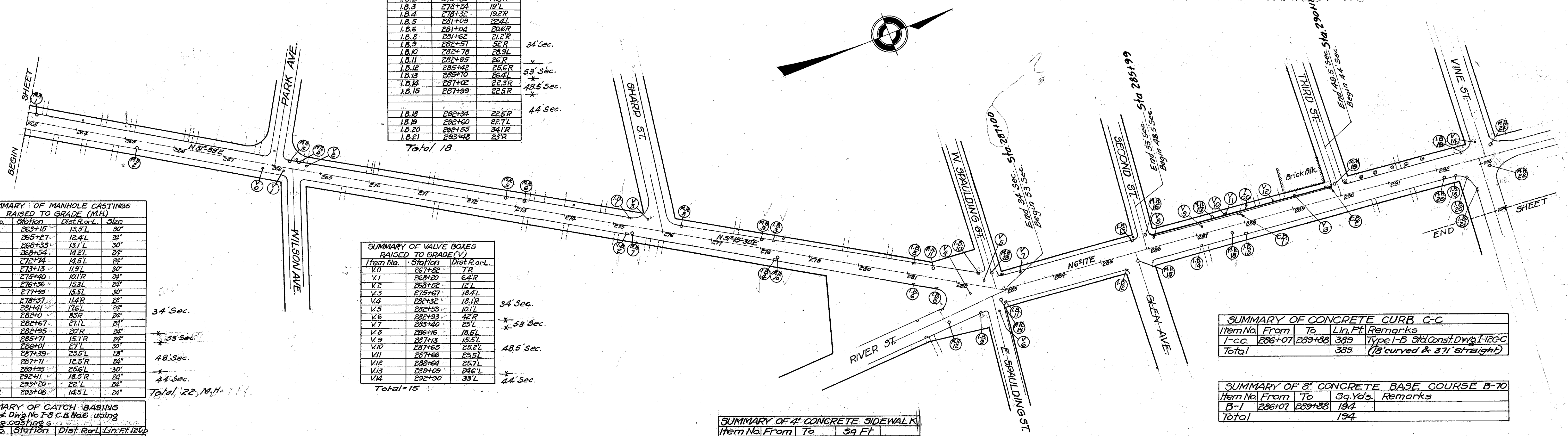
Item No.	From	To	Sq. Yds.	Remarks
B-1	286+07	289+88	194	
Total			194	

SUMMARY OF 4" CONCRETE SIDEWALK

Item No.	From	To	Sq. Ft.
SW	286+07	289+88	1600
Total			1600 Estimated

SUMMARY OF CATCH BASINS
Sta. Const. Dwg. No. I-8 C.B. No. 6, using existing catch basins

Item No.	Station	Dist. R.O.L.	Lin. Ft.	Remarks
C.B. 1	287+96	26.5L	6	
C.B. 2	289+86	26.5L	6	
Total			2	



1-34
3-34
G.C.H.
H.A.C.

196

1-34
3-34
G.C.H.
H.A.C.

196

REVISÉ