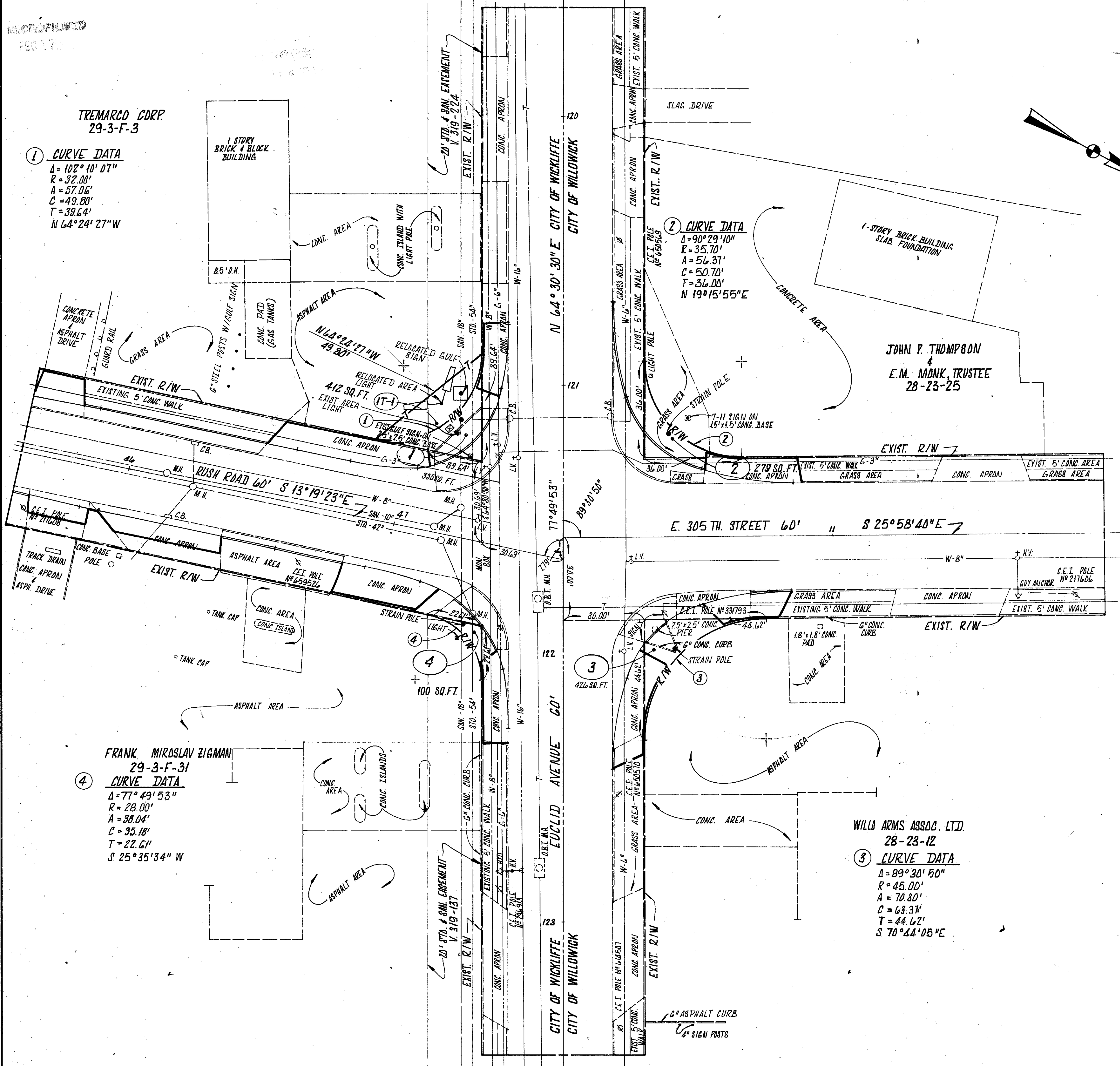


TREMARCO CORP.
29-3-F-3

① CURVE DATA
 $\Delta = 102^\circ 10' 07''$
 $R = 32.00'$
 $A = 57.06'$
 $C = 49.80'$
 $T = 39.64'$
 $N 64^\circ 24' 27'' W$



FRANK MIROSLAV ZIGMAN
29-3-F-3/1

④ CURVE DATA
 $\Delta = 77^\circ 49' 53''$
 $R = 28.00'$
 $A = 38.04'$
 $C = 35.18'$
 $T = 22.61'$
 $S 25^\circ 35' 34'' W$

② CURVE DATA
 $\Delta = 90^\circ 29' 10''$
 $R = 35.70'$
 $A = 56.37'$
 $C = 50.70'$
 $T = 36.08'$
 $N 19^\circ 15' 55'' E$

WILLO ARMS ASSOC. LTD.
28-23-12

③ CURVE DATA
 $\Delta = 89^\circ 30' 50''$
 $R = 45.00'$
 $A = 70.80'$
 $C = 63.37'$
 $T = 44.62'$
 $S 70^\circ 44' 05'' E$

SUMMARY OF RIGHT-OF-WAY REQUIRED

HIGHWAY	OWNER	AUDITOR	DEED RECORD	DEED AREA	TOTAL	TO BE ACQUIRED (SQ. FT.)		NET RESIDUE	TYPE	REMARKS
PARCEL No		PARCEL No	BOOK PAGE	(ACRES)	PRD. SQ. FT.	GRASS TAKE	NET TAKE	(SQ. FT.)	FUNDS	
1	TREMARCO CORPORATION	29-3-F-3	452 35	17,586	—	355	355	22,231	100% CITY	STRAIN POLE & CONTROLLER
1T-1	TREMARCO CORPORATION	29-3-F-3	452 35	—	—	412	412	—	100% CITY	GULF SIGN & LIGHT POLE RELOCATION
2	J.P. THOMPSON & E.M. MONK, TRUSTEE	28-23-25	839 1013	15,969	—	279	279	15,690	100% CITY	STRAIN POLE
3	WILLO ARMS ASSOC. LTD.	28-23-12	425 214	150,674	—	426	426	150,248	100% CITY	STRAIN POLE
4	FRANK MIROSLAV ZIGMAN	29-3-F-3/1	847 808	26,628	—	100	100	26,528	100% CITY	STRAIN POLE