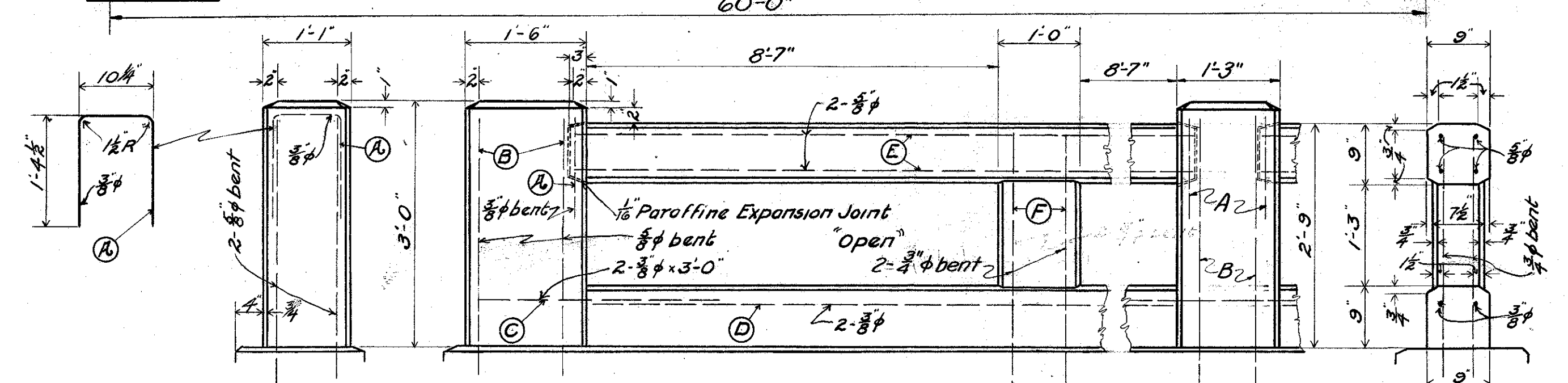
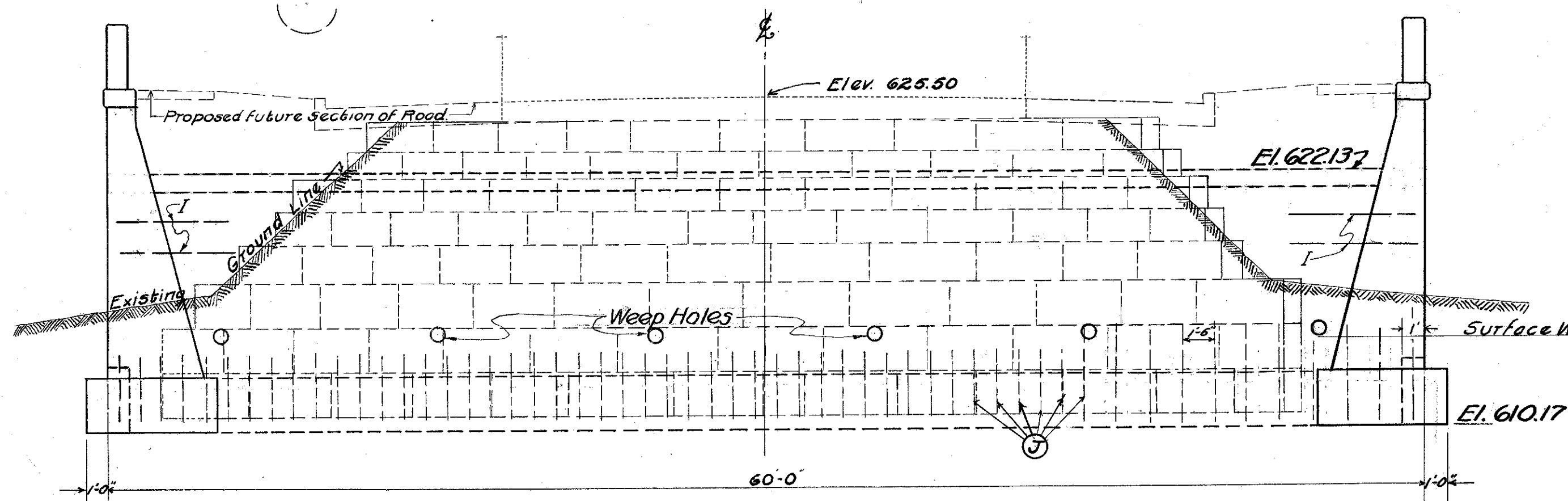


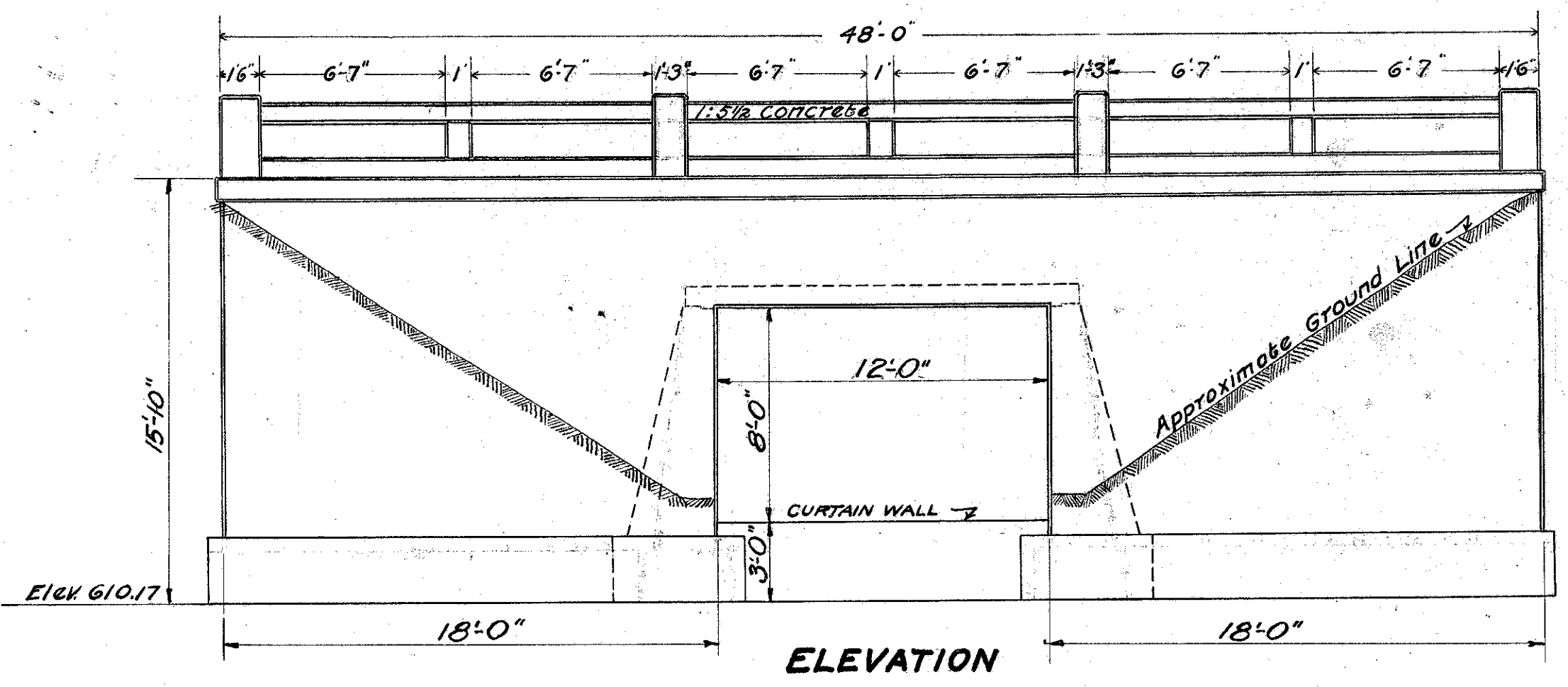
PLAN
SHOWING OLD ABUTMENTS AND BRIDGE



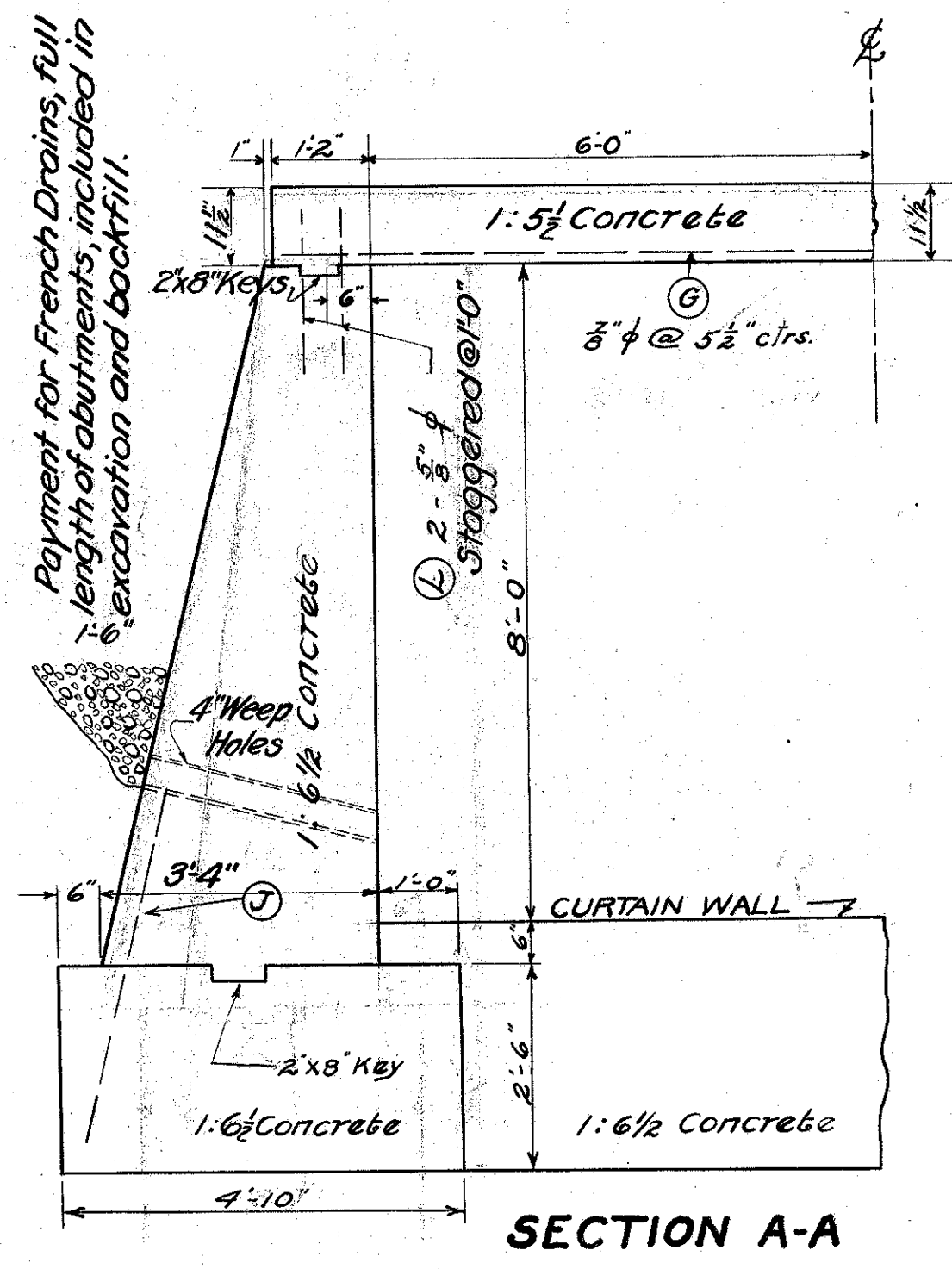
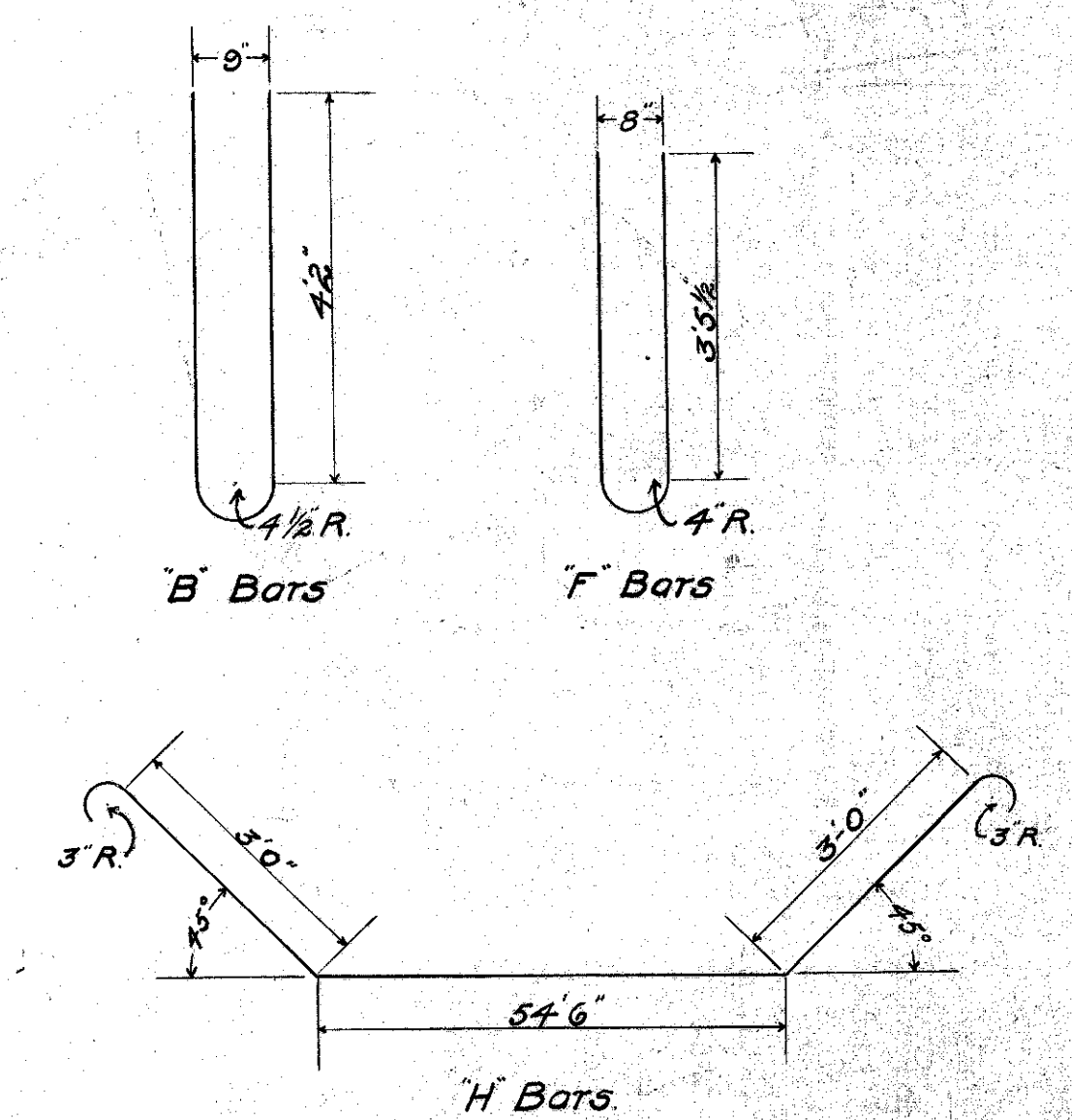
STANDARD GUARD RAIL TYPE RR-4



END VIEW
SHOWING OLD ROAD SECTION AND FUTURE ROAD SECTION

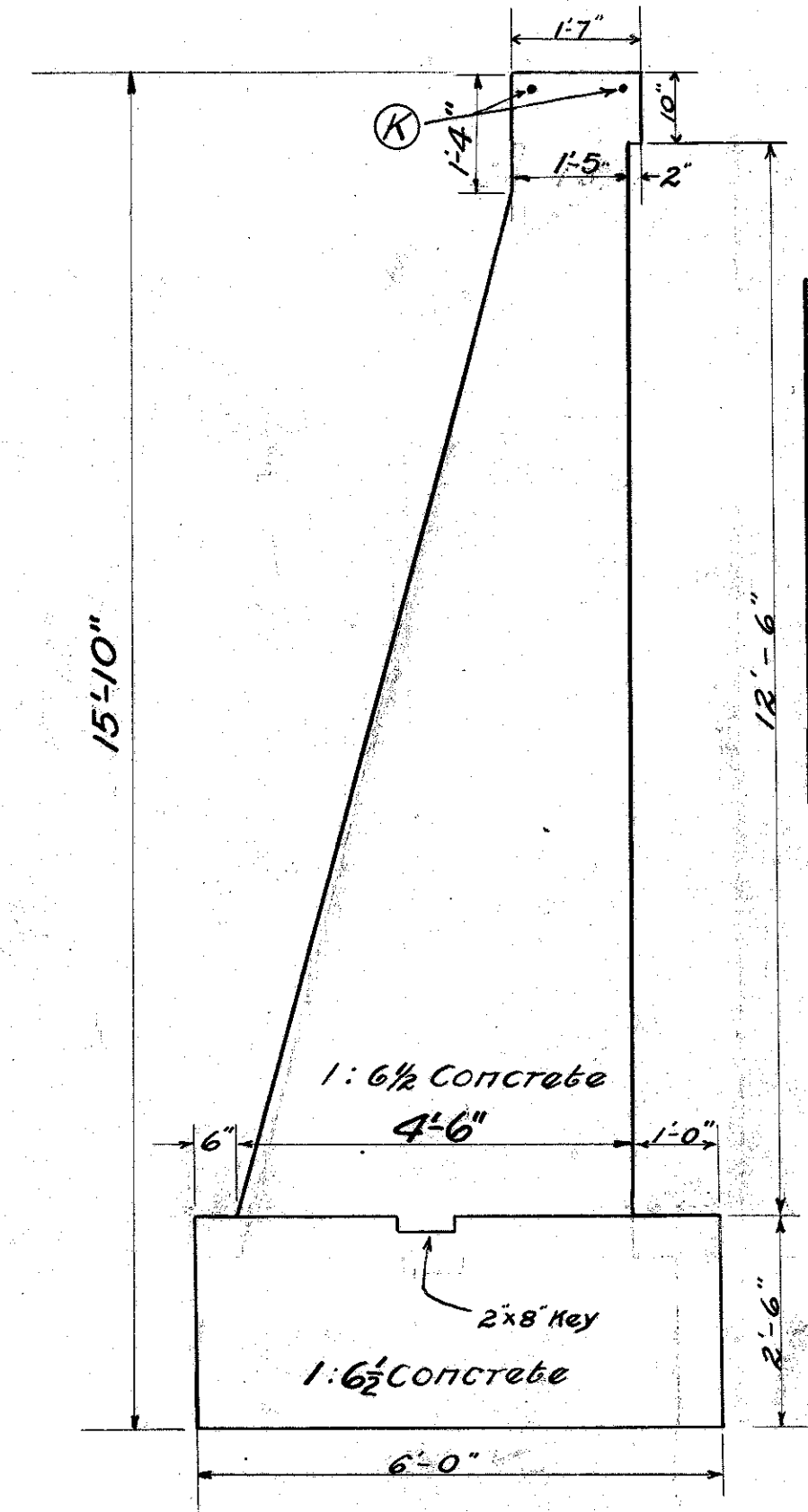


ELEVATION

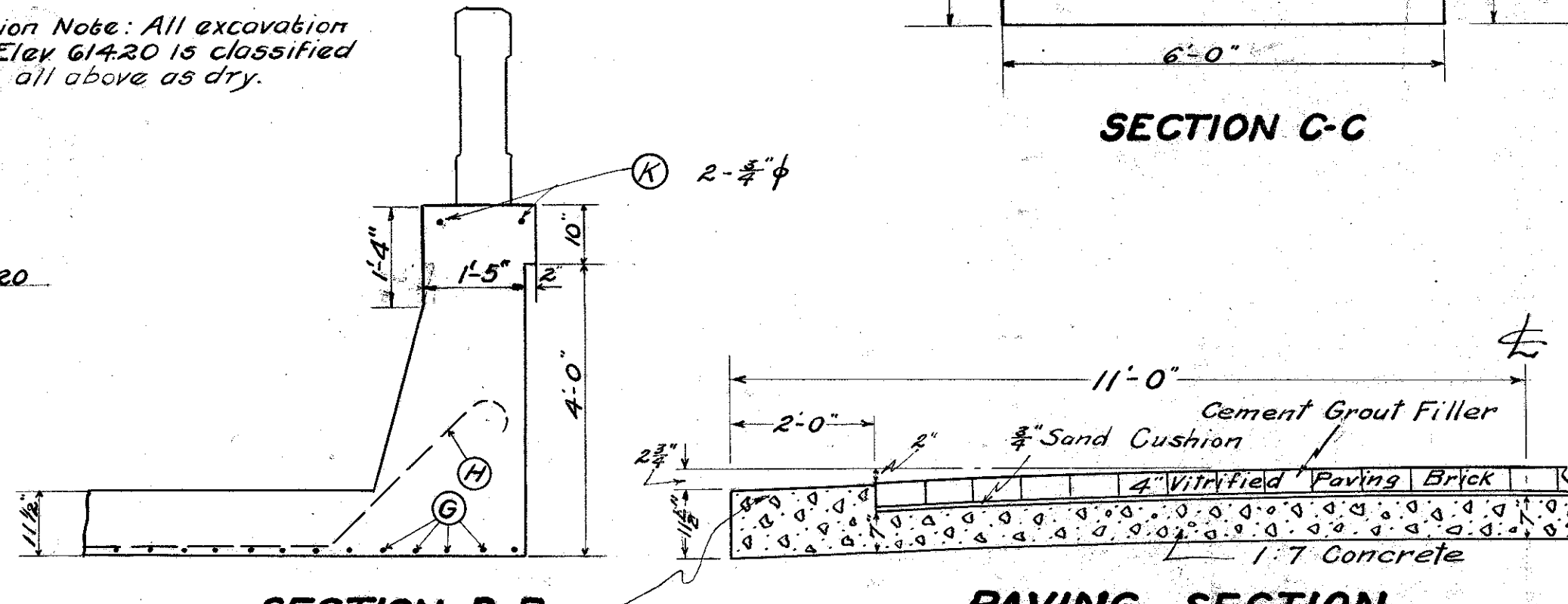


SECTION A-A

Excavation Note: All excavation below Elev 614.20 is classified as 'Wet' all above as dry.



SECTION C-C



PAVING SECTION

STEEL LIST				
MARK	SIZE	NUMBER	LENGTH	WEIGHT
* A	3/8 φ	12	3'-6"	
B	3/8 φ	16	9'-6"	159.
* C	3/8 φ	16	3'-0"	
* D	3/8 φ	12	18'-0"	
* E	5/8 φ	24	18'-6"	
F	3/4 φ	12	8'-0"	143.
G	3/8 φ	130	14'-0"	3720.
H	1/2 φ	6	62'-0"	248.
I	3/4 φ	16	12'-0"	288.
J	3/8 φ	80	4'-6"	377.
K	3/4 φ	4	48'-0"	288.
L	3/8 φ	120	2'-0"	230.
			TOTAL WEIGHT	5475

* Included for payment in price per lin. ft. railing.

ESTIMATED QUANTITIES

Web Excavation	190.0	cu. yds.
Dry Excavation	45.0	cu. yds.
1:6 1/2 Concrete (Footings)	87.4	cu. yds.
1:6 1/2 Concrete (Walls)	183.9	cu. yds.
1:5 1/2 Concrete (Superstructure)	28.0	cu. yds.
Reinforcing Steel	5475	lbs.
Concrete Railing (Type RR-4)	96.0	lin. ft.
Fill	335.0	cu. yds.
Removing Old Bridge		
Old Pavement Removed	106.1	sq. yds.
New Pavement	157.8	sq. yds.

STRUCTURAL PLANS
AND ESTIMATED QUANTITIES
SLAB BRIDGE OVER MUD MILL CREEK
STA. 55+02 S.H.(I.C.H.) 2 SEC. J
LAKE COUNTY
STATE OF OHIO
DEPARTMENT OF HIGHWAYS AND PUBLIC WORKS
DIVISION OF HIGHWAYS
FEBRUARY 1928 BUREAU OF BRIDGES

DESIGNED	DRAWN BY	TRACED	CHECKED	REVIEWED
302-1 5B-2430	C.W. MOODEY	C.W. MOODEY	W.D. ARNOLD	W.H. EASE
				8-31-28

Note: Roadway to be kept open to traffic at all times. Provision shall be made for two lanes of traffic.

24" x 4 1/2" monolithic concrete curb, 1:5 Mix. New pavement extends from 29.5' E. to 36.0' W. of bridge.