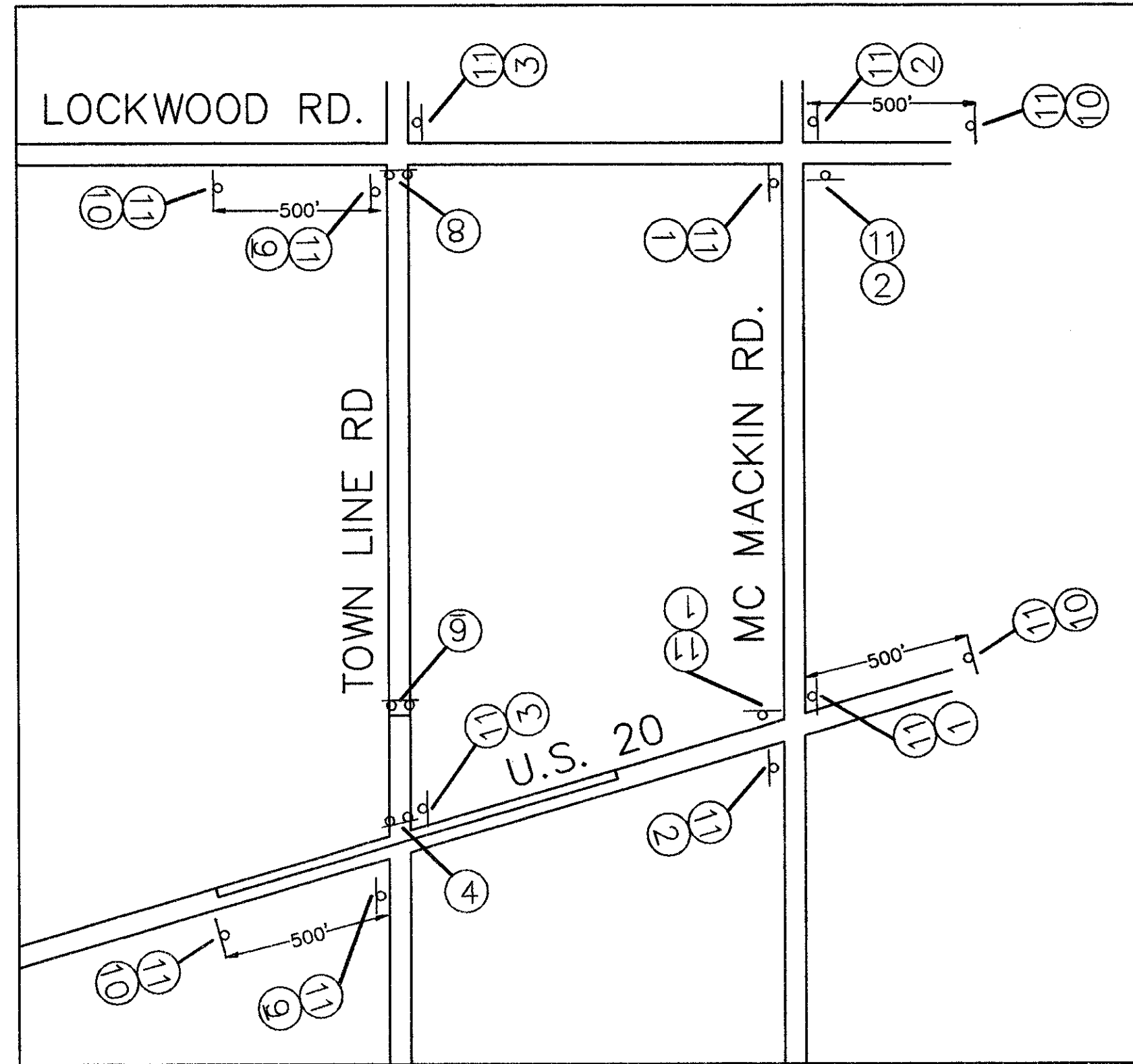
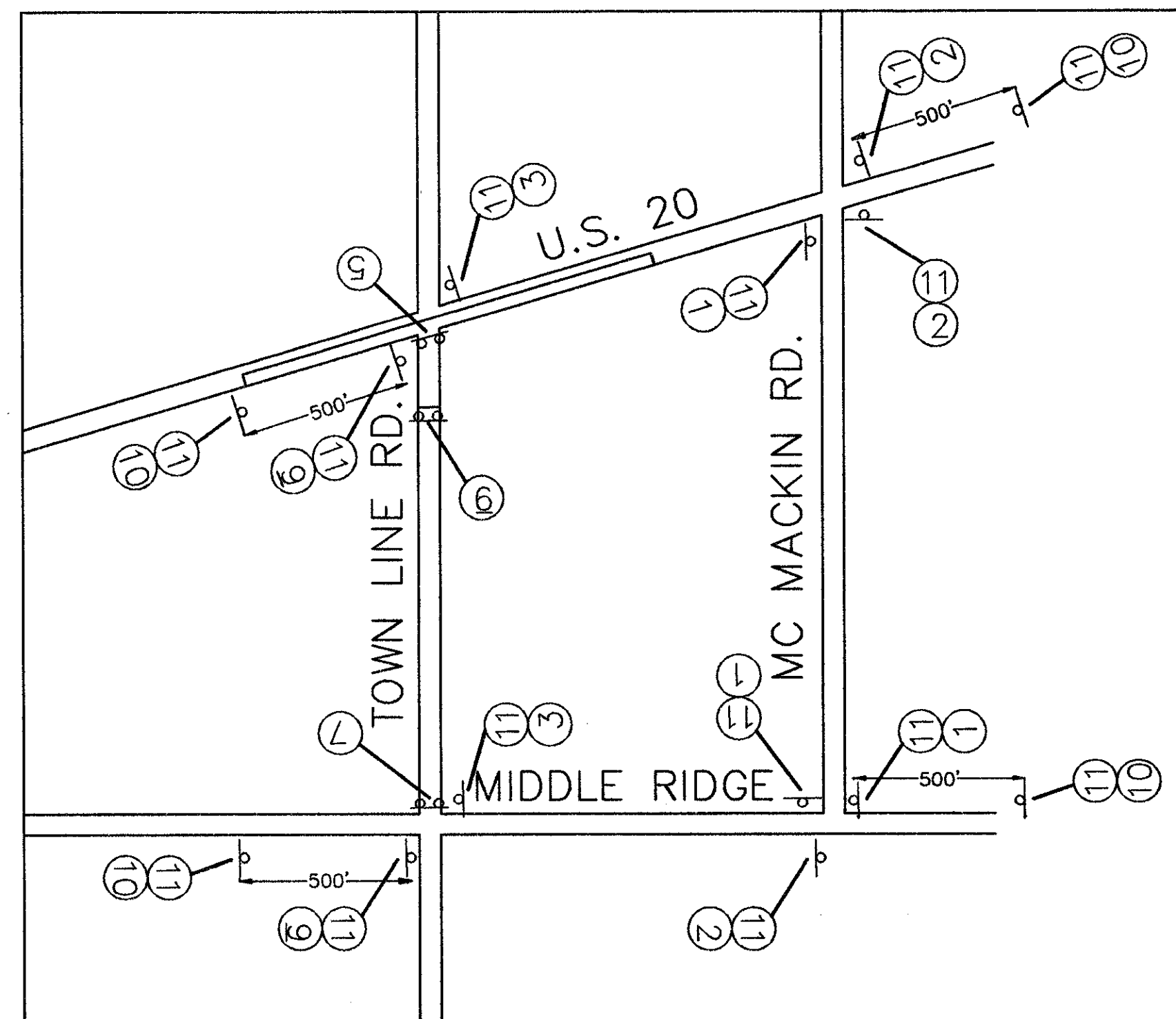


H: 11998198404.DWG 198404.MTS.DWG

PHASE 1



PHASE 2

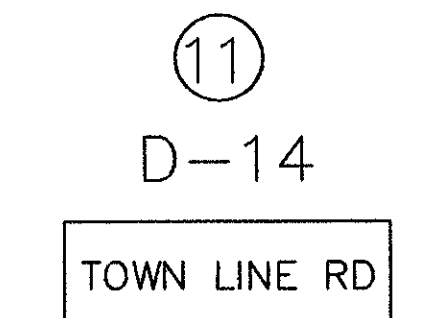
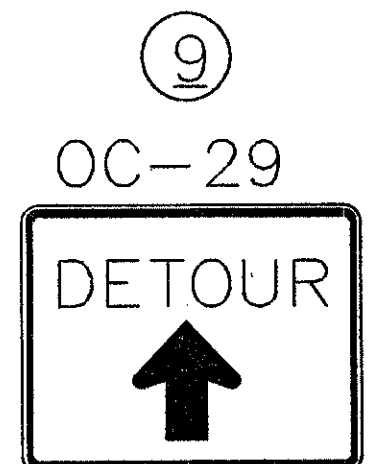
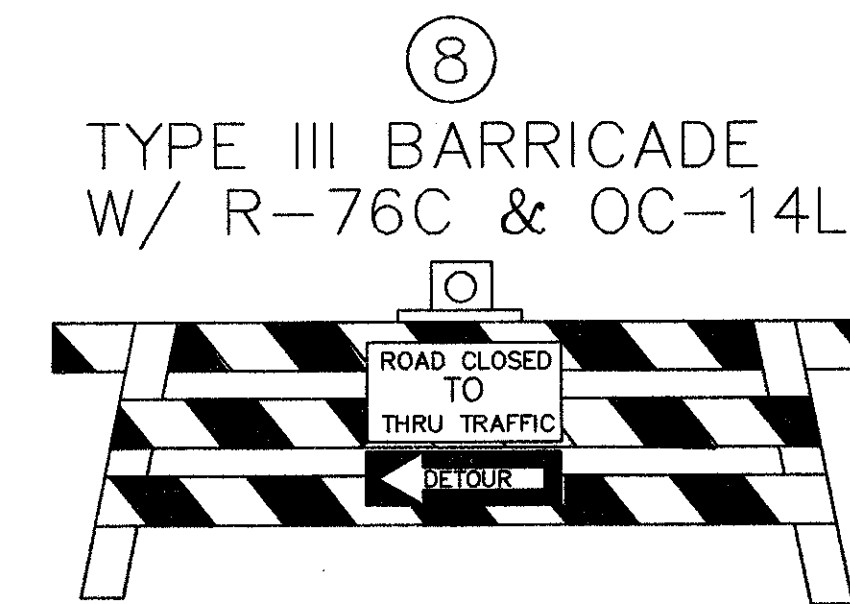
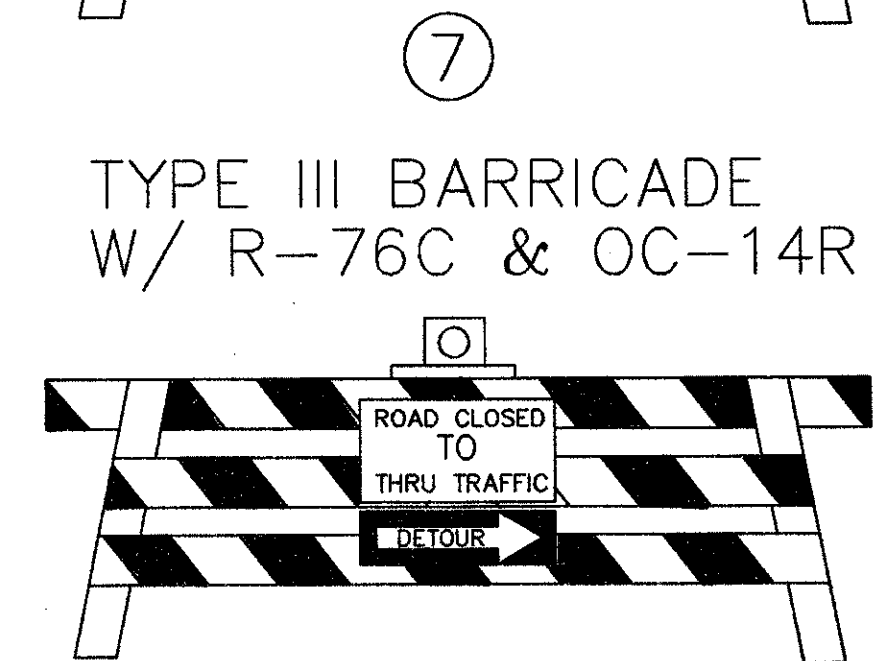
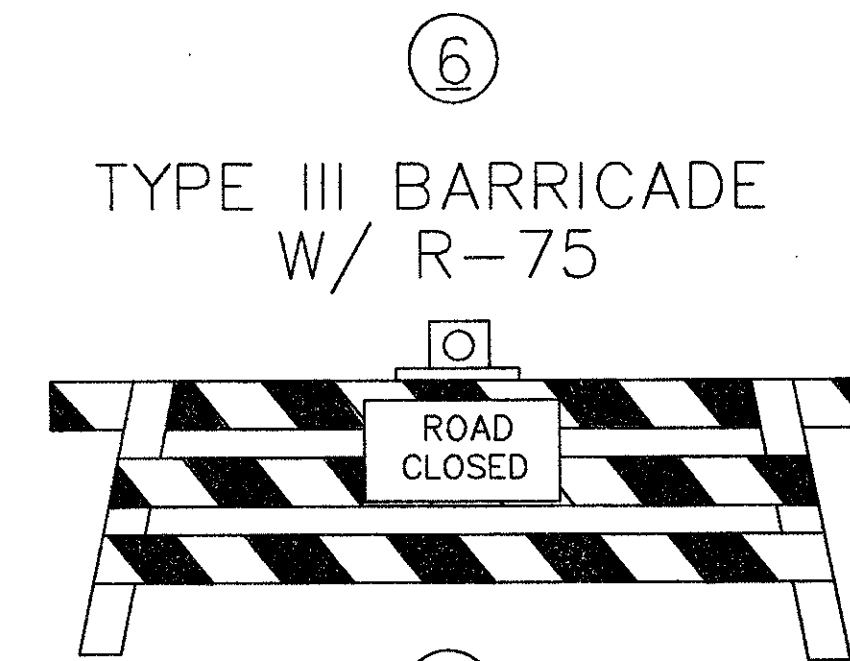
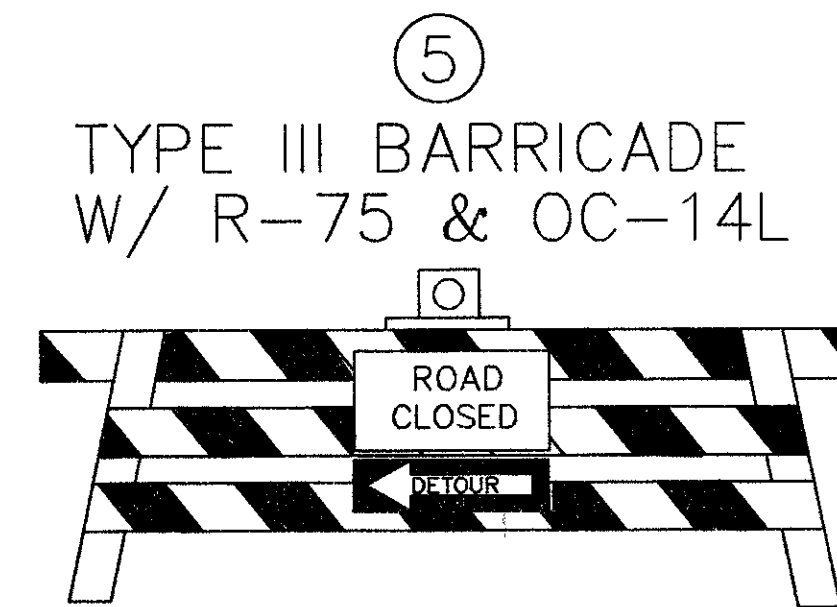
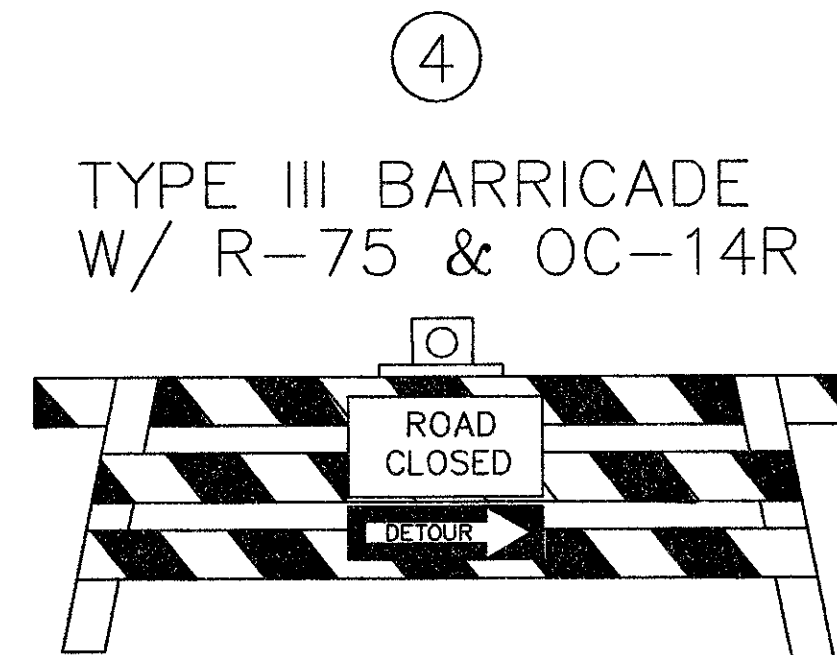
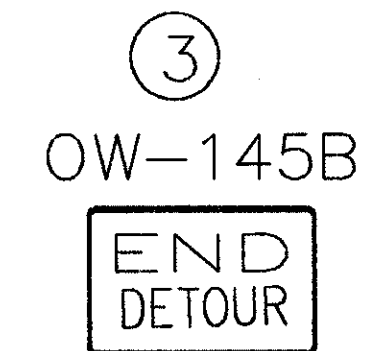
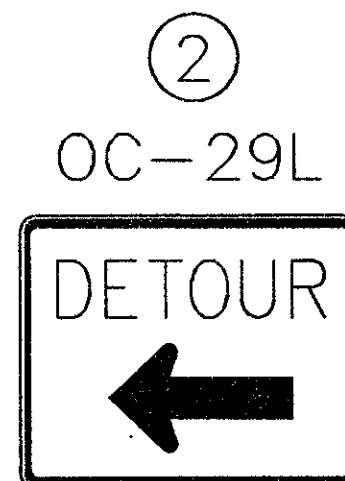
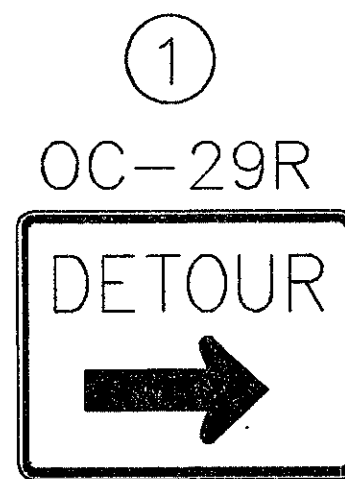


SECTION D PHASING DETAILS

PHASE 1 - CONSTRUCT WESTBOUND SECTION OF U.S. 20 AND THE NORTHERN HALF OF THE TOWN LINE ROAD INTERSECTION. MAINTAIN TWO-WAY TRAFFIC ON EASTBOUND LANES PER THE MAINTENANCE OF TRAFFIC TYPICAL DETAIL. DETOUR TOWN LINE ROAD TRAFFIC UTILIZING U.S. 20, MC MACKIN ROAD AND LOCKWOOD ROAD.

PHASE 2 - CONSTRUCT EASTBOUND SECTION OF U.S. 20 AND THE SOUTHERN HALF OF THE TOWN LINE ROAD INTERSECTION. MAINTAIN TWO-WAY TRAFFIC ON THE WESTBOUND LANES PER THE MAINTENANCE OF TRAFFIC TYPICAL DETAIL. DETOUR TOWN LINE ROAD TRAFFIC UTILIZING U.S. 20, MC MACKIN ROAD AND MIDDLE RIDGE ROAD.

NOTE: CONSTRUCTION FOR EACH PHASE SHALL BE COMPLETED PRIOR TO ESTABLISHMENT OF DETOUR FOR NEXT PHASE. SIGNAL WORK SHALL OCCUR PRIOR TO FINAL PAVEMENT CONSTRUCTION. ANY SIGNAL TAKEN OUT OF SERVICE DUE TO CONSTRUCTION OPERATIONS SHALL BE REPLACED WITH TEMPORARY STOP SIGNS ERECTED ON THE SIDE STREET APPROACHES.



NOT TO SCALE  
 CALCULATED  
 CHECKED  
 MAINTENANCE OF TRAFFIC  
 SECTION D - TOWN LINE ROAD  
 LAK - 20 - 18.40  
 21