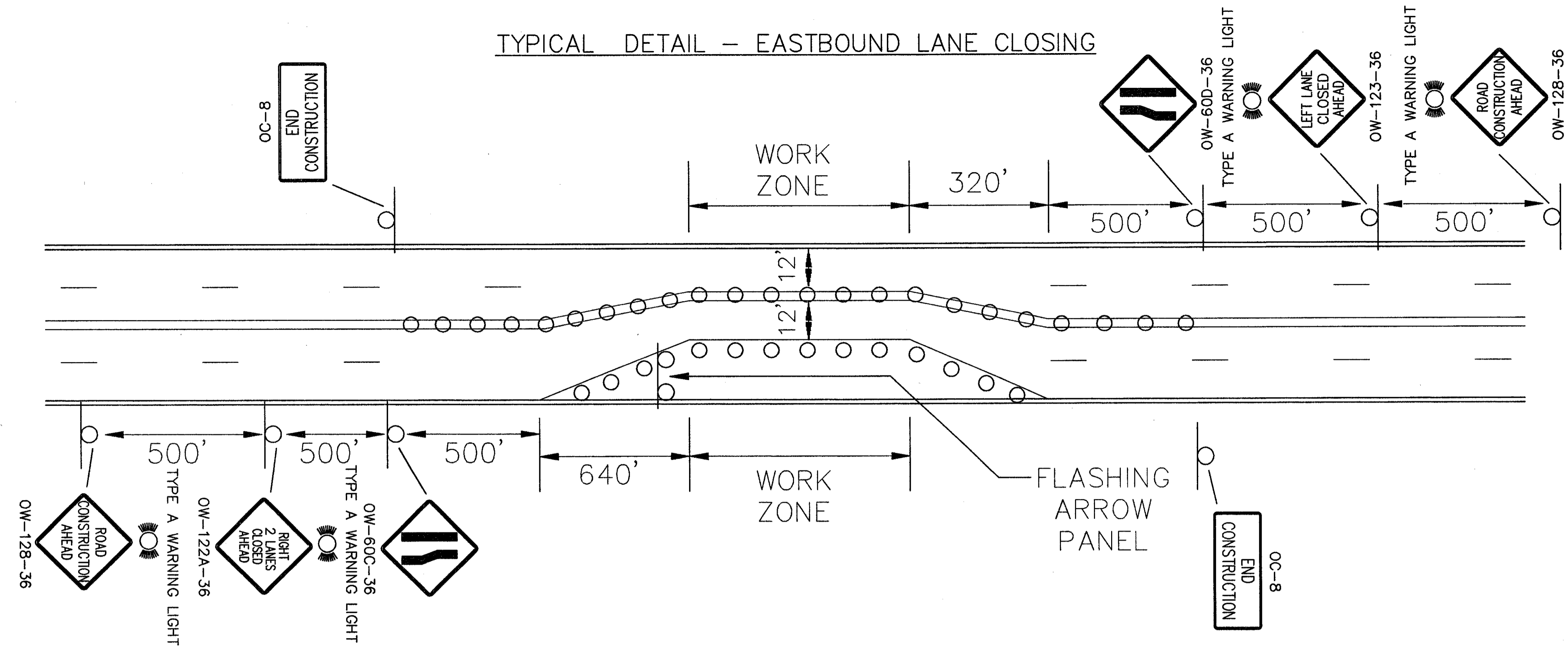
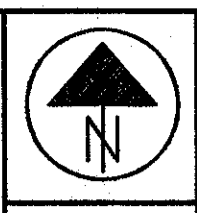
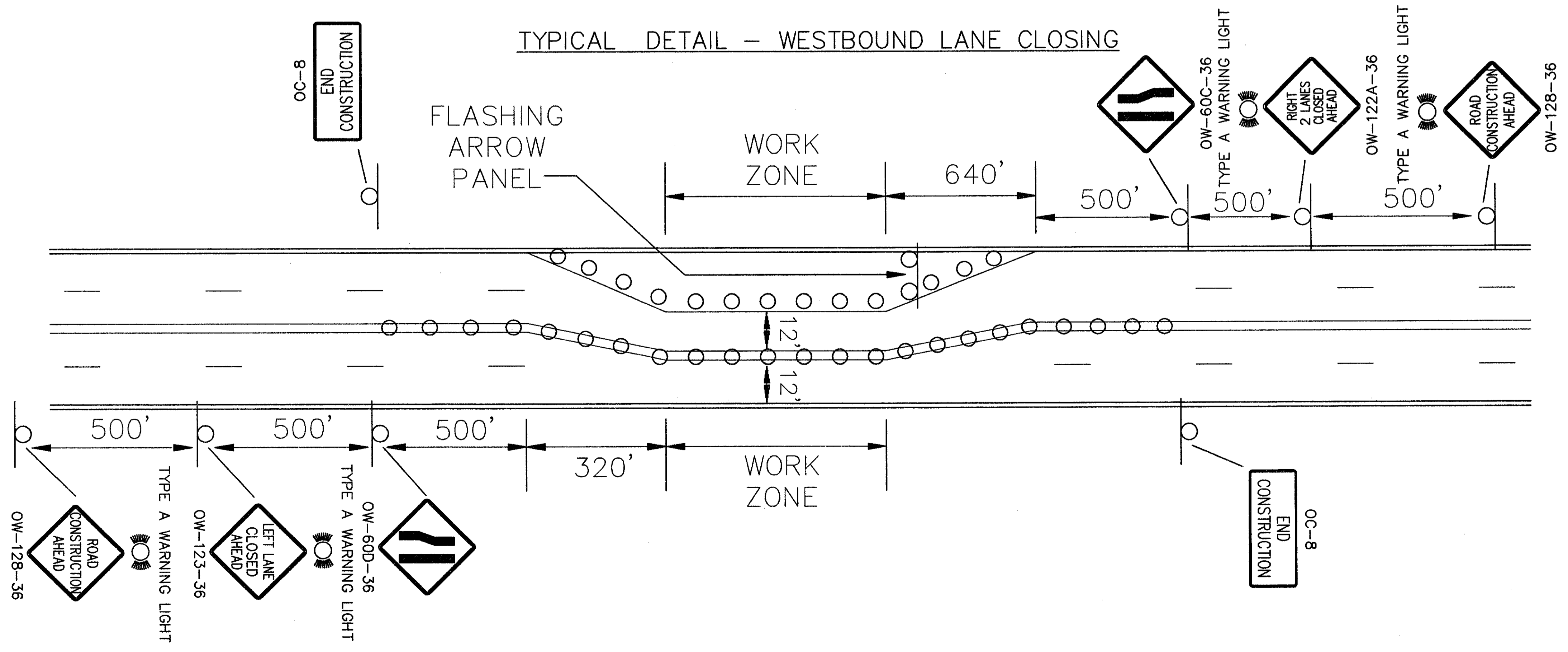


TYPICAL DETAIL - EASTBOUND LANE CLOSING



NOTE: REMOVE ALL EXISTING PAVEMENT MARKINGS WHICH CONFLICT WITH THE WORK ZONE MARKINGS
 ALL TAPERS AND BARREL SPACING SHALL MEET THE REQUIREMENTS OF MT-95.31 & MT-95.32

TYPICAL DETAIL - WESTBOUND LANE CLOSING



NOT TO SCALE

CALCULATED
CHECKED

MAINTENANCE OF TRAFFIC
TYPICAL DETAIL

LAK - 20 - 18.40