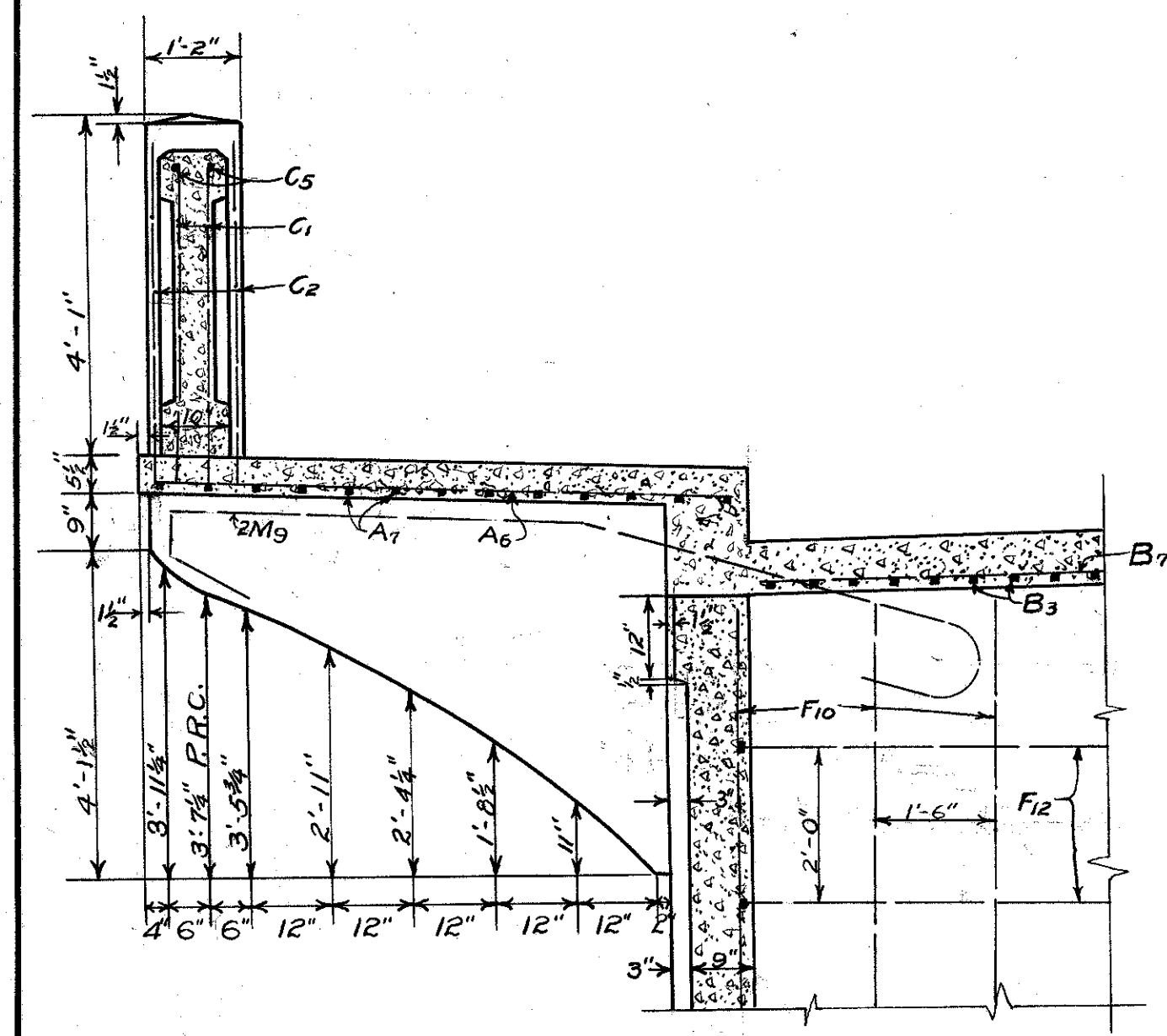


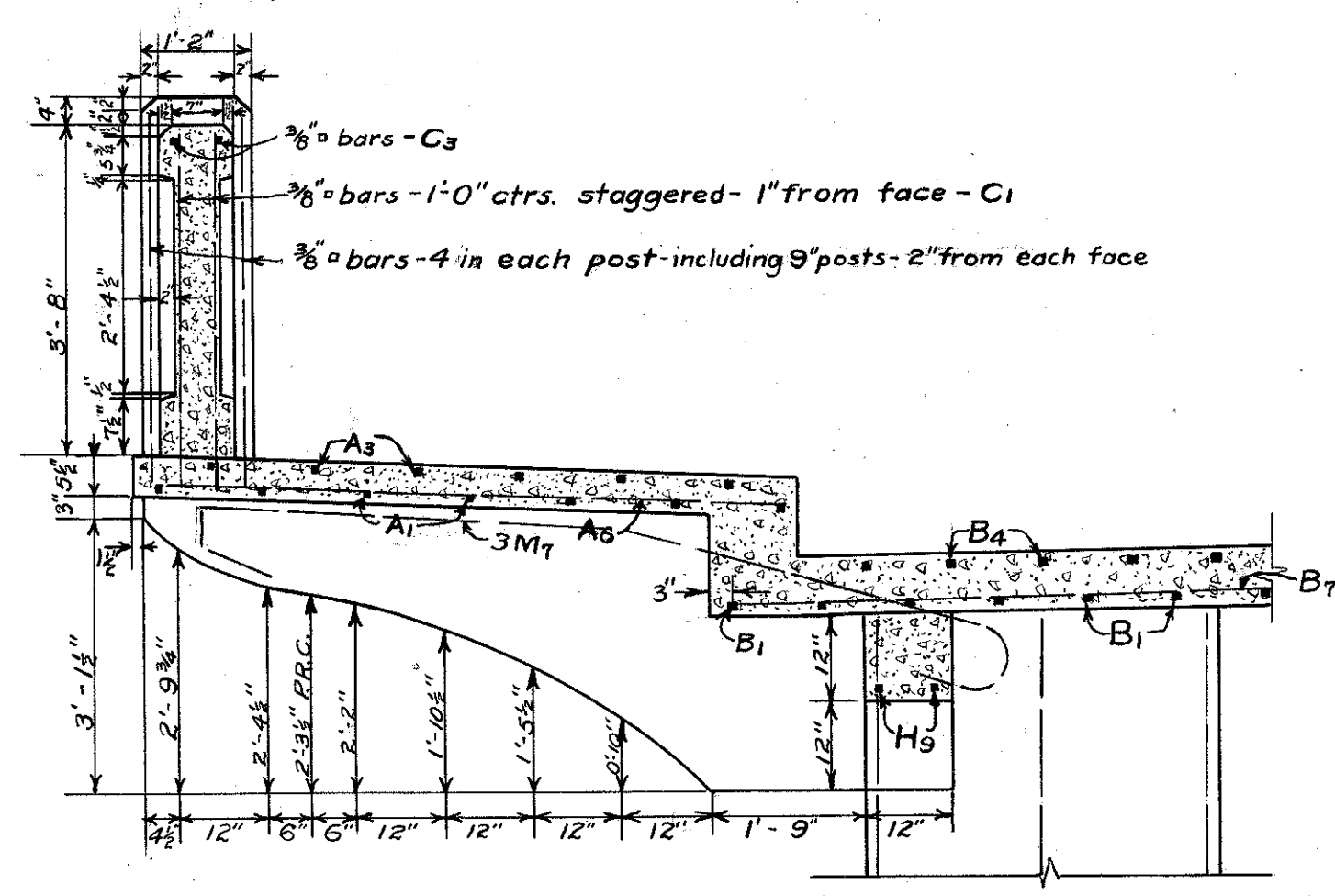
ELEVATION OF ARCH B  
Scale - 1/4" = 1'

Note- Extradors dowels to extend 5'-0" beyond construction joint.  
Intradors dowels to extend 5'-3" beyond construction joint.  
End of main intrados steel to be 3" from construction joint.  
Laps to be made as shown.

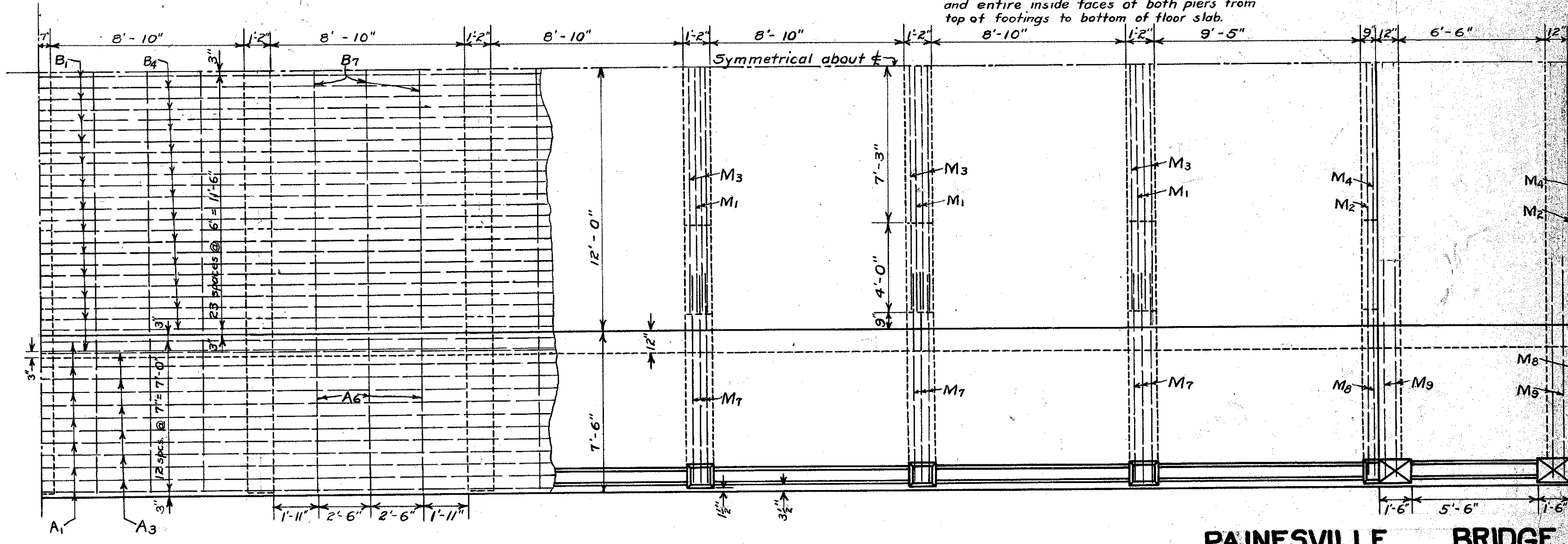
Note- Large panels in faces of piers and abutments and both sides of panels in railing thru out the bridge to be bush-hammered. All other exposed faces to be rub finished. The following surfaces are to be water-proofed- Back faces of both abutments and inside faces of wing walls to a line 2' below finished slope of earth as shown on plans, and entire inside faces of both piers from top of footings to bottom of floor slab.



PART SECTION B - B  
Scale - 1/2" = 1'



PART SECTION A - A  
Scale - 1/2" = 1'



PART PLAN OF ARCH B  
Scale - 1/4" = 1'

**PAINESVILLE BRIDGE**  
OVER GRAND RIVER ON THE  
**CLEVELAND - BUFFALO ROAD**  
I.C.H. 2      SEC. J  
LAKE COUNTY  
STATE HIGHWAY DEPARTMENT  
COLUMBUS OHIO  
APRIL 1921      BUREAU OF BRIDGES