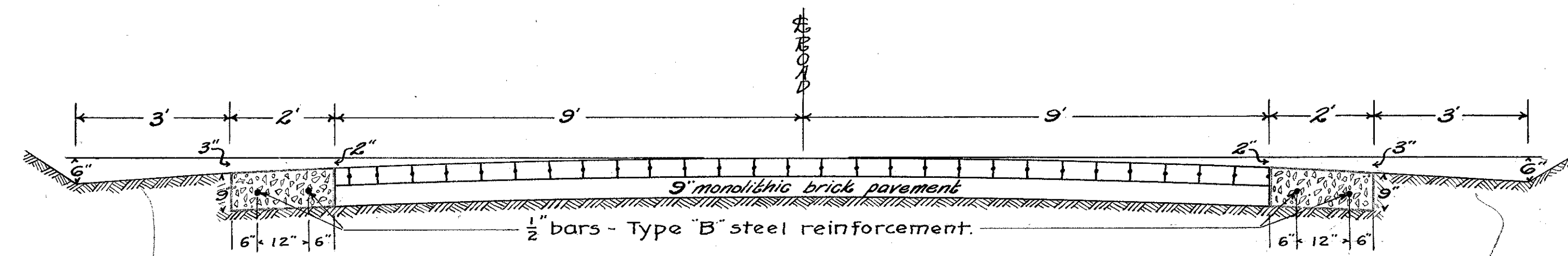


FED. RD. DIST. NO.	STATE	FED. AID PROJECT	FISCAL YEAR
10	OHIO	445	1924

2
3

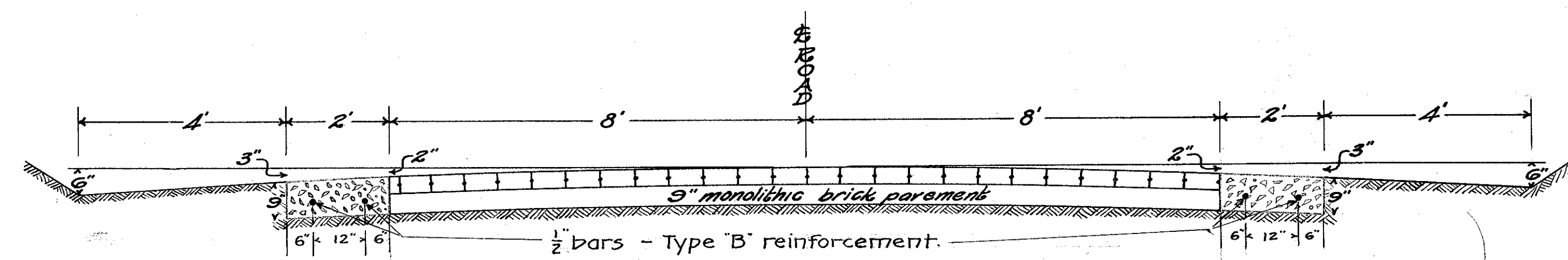
I.C.H. No. 2 SEC. J&Q
LAKE COUNTY



TYPICAL SECTION
STA. 0+42 TO STA. 80
SCALE 1IN=2FT.

To be constructed according to specifications for One Course Reinforced Concrete Pavement.
Grade A Limestone to be used for coarse aggregate.

Pavement to be kept open to traffic at all times.
All intersecting roads to be kept open.



TYPICAL SECTION
STA. 80 TO STA. 695+42
SCALE 1IN=2FT.