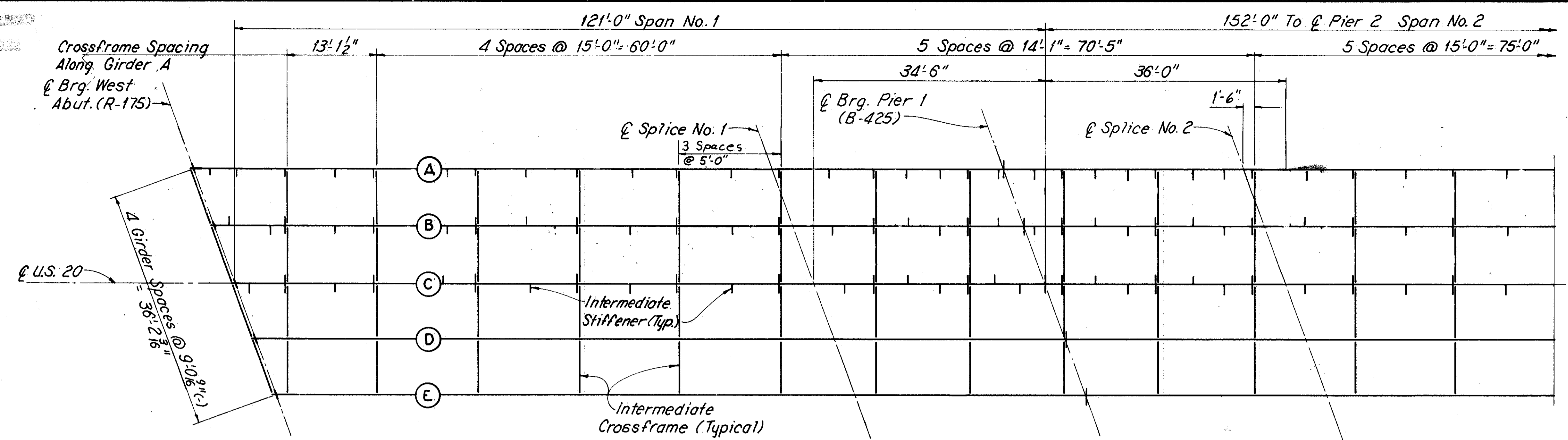


LAKE COUNTY  
LAK-20-17.14

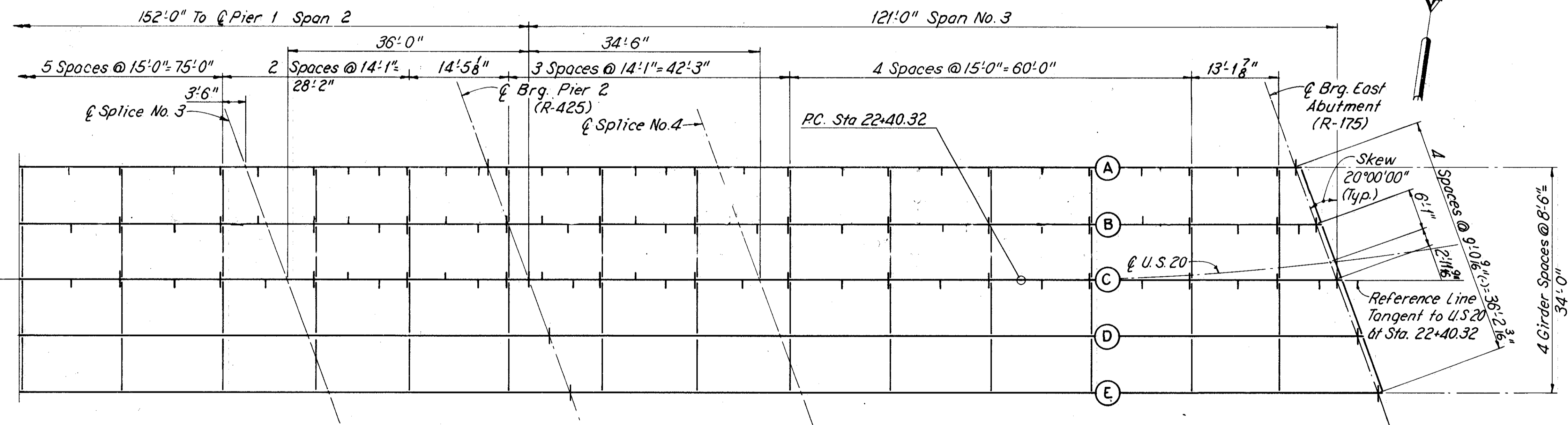
NOTES

1. ALL STRUCTURAL STEEL SHALL CONFORM TO ASTM A572, GRADE 50 STEEL, UNLESS NOTED OTHERWISE.
2. FOR GIRDER ELEVATIONS AND FRAMING DETAILS SEE SHEET 13/22
3. FOR DEFLECTION AND CAMBER DETAILS SEE SHEET 14/22
4. INTERMEDIATE STIFFENERS SHALL BE PLACED SINGLY, EXCEPT AT CROSSFRAMES OF INTERIOR GIRDERS WHERE THE STIFFENERS SHALL BE PLACED IN PAIRS. ALL INTERMEDIATE STIFFENERS SHALL BE WELDED TO THE WEB WITH 3/16" CONTINUOUS FILLET WELDS ON BOTH SIDES OF THE STIFFENERS AND SINGLY PLACED STIFFENERS SHALL BE WELDED TO THE COMPRESSION FLANGES WITH FILLET WELDS OF THE SAME SIZE AS THE WEB TO FLANGE WELD AT THE SAME LOCATION. THE INTERMEDIATE STIFFENERS SHALL BE PLACED NORMAL TO THE GIRDER FLANGE, EQUALLY SPACED BETWEEN CROSSFRAMES OR CROSSFRAMES AND BEARING STIFFENERS AT PIERS OR CROSSFRAME AND STIFFENER ADJACENT TO ABUTMENTS OR AS NOTED IN ACCORDANCE WITH THE MAXIMUM STIFFENER SPACING SHOWN ON THE GIRDER ELEVATION. At crossframes the stiffeners shall be welded to both top and bottom flanges.
5. IN LIEU OF A572 STEEL, A36 STEEL MAY BE FURNISHED FOR BEARINGS, EXCEPT FOR UPPER PLATE ELEMENT OF BEARING. THIS A36 STEEL SHALL BE INCLUDED WITH THE A572 STEEL QUANTITY FOR PAYMENT.



FRAMING PLAN

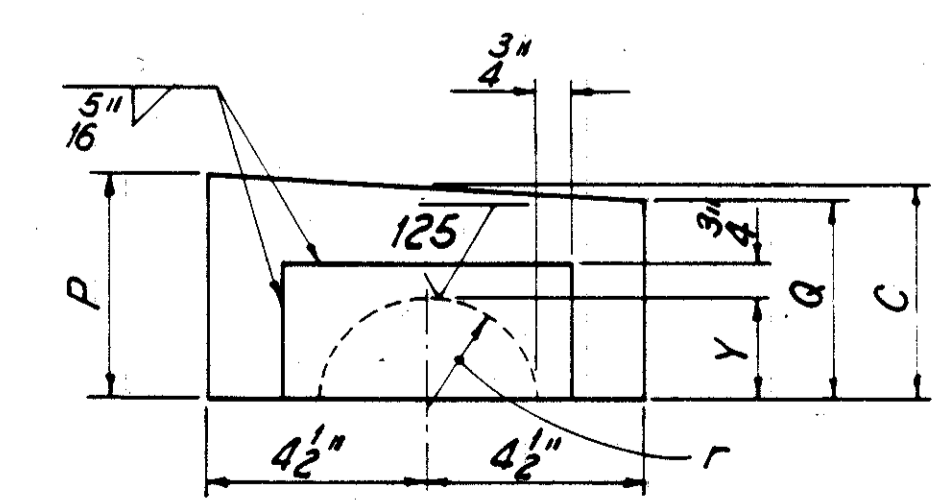
Note:  
For Crossframe Details see Sheet 13/22



FRAMING PLAN

BEARING UNITS		DIMENSIONS (INCHES)												
BOLSTER No.	ROCKER No.	A	B	C	D	F	G	H	K	L	M	R	T	Y
B-425		4 1/2	25	4 1/2	-	7/8	-	23 5/8	17	34	-	15	4	2 3/16
	R-425	4 1/2	25	4 1/2	4	7/8	15	23 5/8	17	34	31	15	4	2 3/16

Note: For details not shown, see Standard Drawing RB-1-55. All bearings shall be in accordance with Standard Drawing RB-1-55 except that upper plate element shall be beveled to match roadway grade. Tabulated plate thickness 'C' shall apply at centerline of plate. (See Upper Load Plate Detail)



BEVELED UPPER LOAD PLATE DETAIL

LOCATION	Q	P
Pier No. 1	4 5/16	4 1/16
Pier No. 2	4 1/4	4 3/4
East Abut.	4 5/16	4 1/16

WOODRUFF, INC.  
CONSULTING ENGINEERS  
CLEVELAND, OHIO

FRAMING PLAN

U.S. ROUTE 20 OVER  
THE GRAND RIVER

BR. NO. - LAK-20-1723 FROM STA. 18+91.00  
TO STA. 22+89.56

LAKE COUNTY OHIO

MADE RJP	TRACED RCK	CHECKED ALM	REVIEWED ALM	REVISED
DATE 9/84	DATE 9/84	DATE 10/84	DATE 10/84	SHEET 12/22

U.S. 20 OVER GRAND RIVER