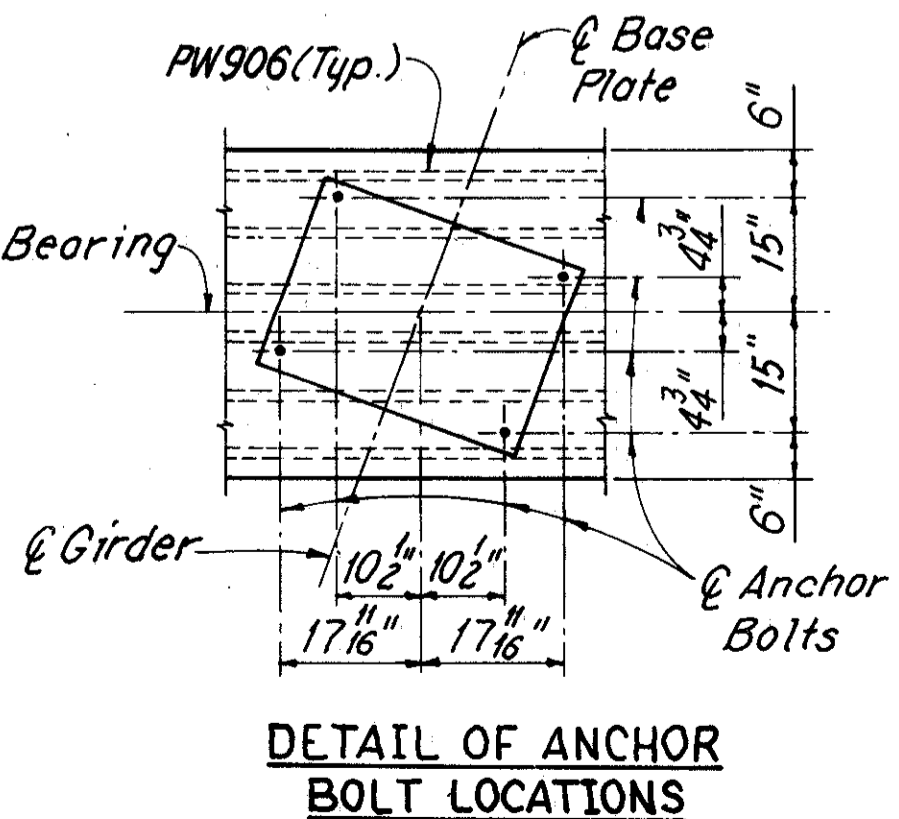
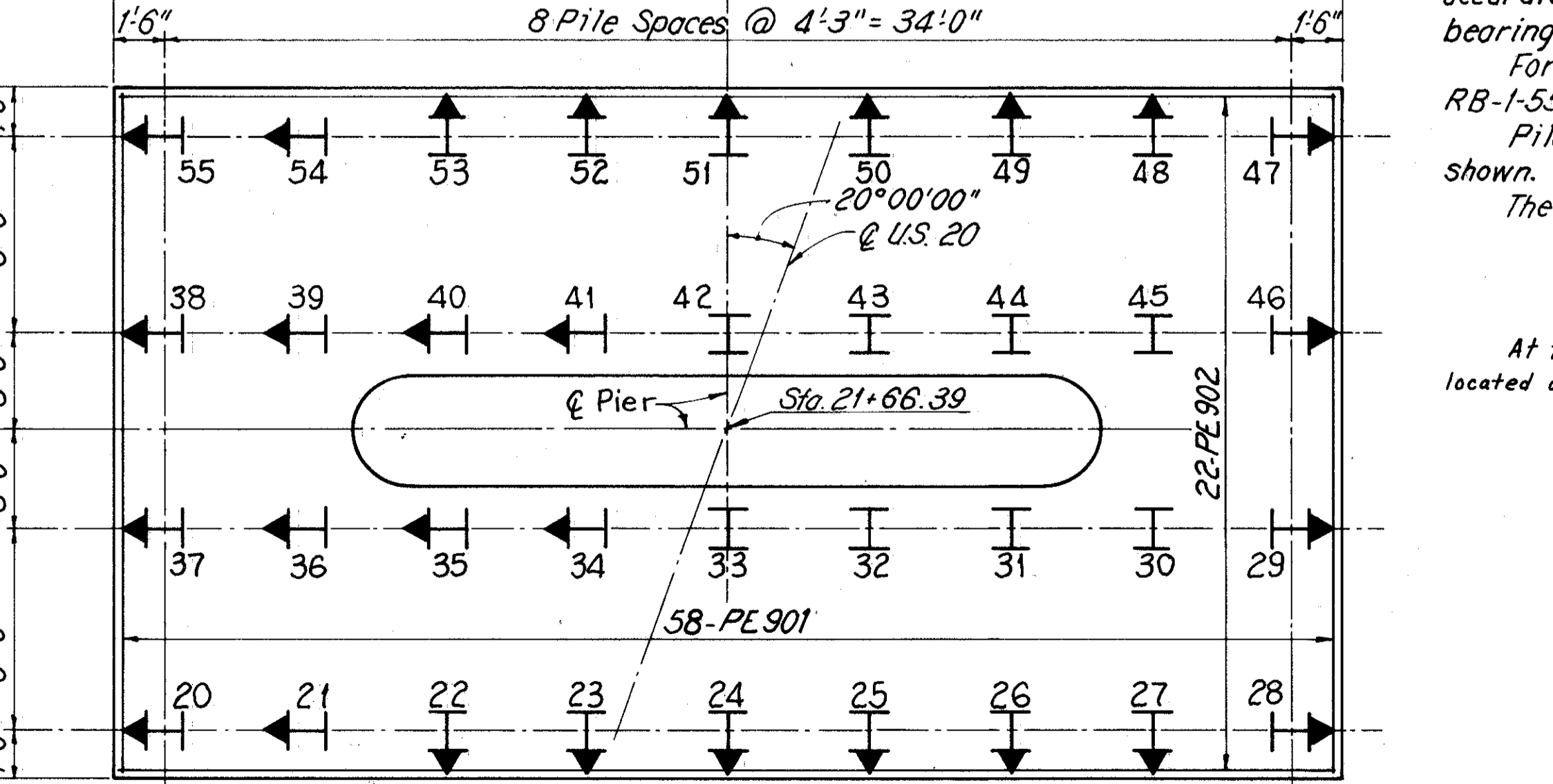
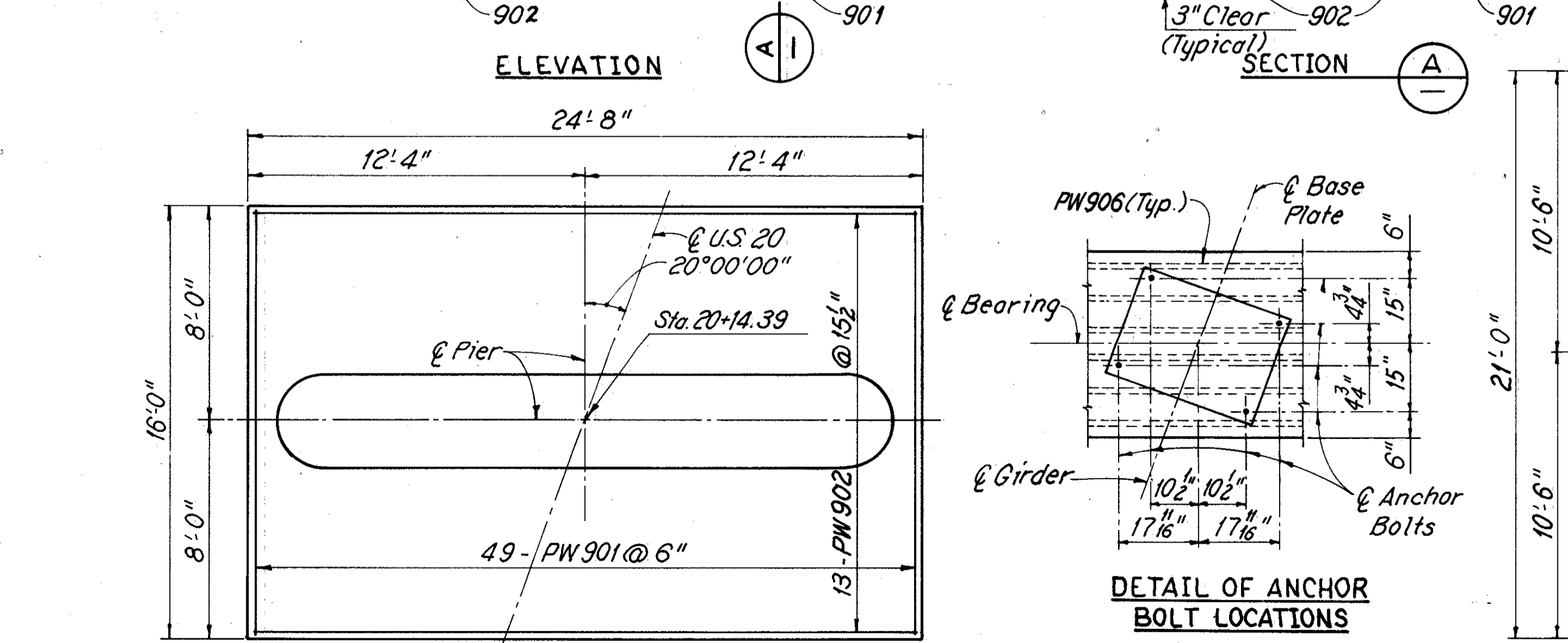
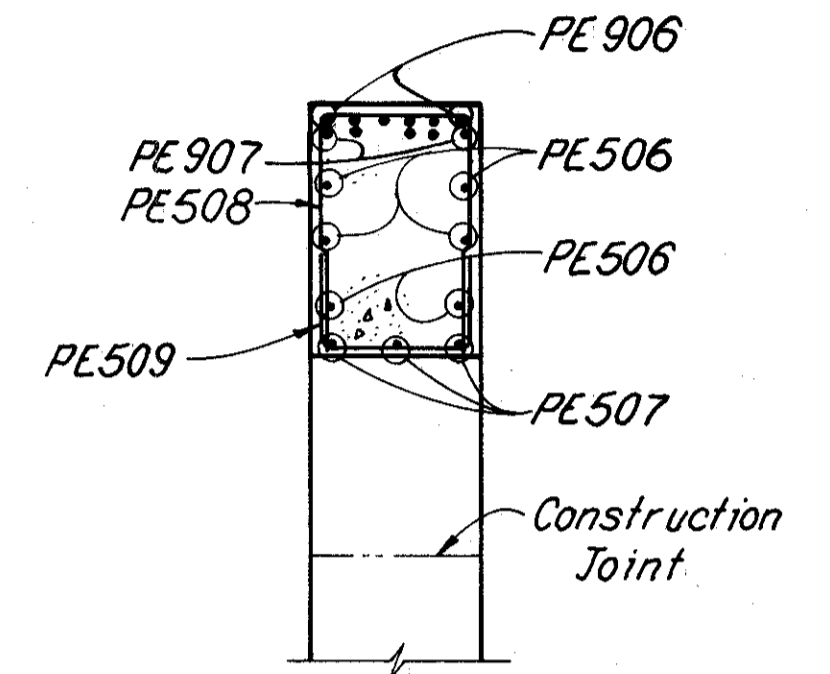


Note: Bar marks will be prefixed as follows:
PW for Pier No. 1
PE for Pier No. 2



Notes:
Reinforcing steel in the vicinity of the bridge seat shall be accurately placed to avoid interference with the drilling of bearing anchor holes or pre-setting of bearing anchors.
For anchor bolt details see Ohio Standard Drawing RB-1-55.
Piles shown thus \uparrow shall be battered 1:4 in the direction shown.
The following abbreviations are used:
E.F. = Each Face
Typ. = Typical
Min. = Minimum
At the option of the Contractor, bearing anchors or formed holes, located and supported by templates, may be cast in place.

WOODRUFF, INC. CONSULTING ENGINEERS CLEVELAND, OHIO	
PIERS	
U.S. ROUTE 20 OVER THE GRAND RIVER	
BR. NO.-LAK-20-1723	FROM STA. 18+91.00 TO STA. 22+89.56
LAKE COUNTY	OHIO
MADE 2/84	TRACED RCK
DATE 9-84	DATE 9-84
CHECKED PG	REVIEWED
DATE 10-84	DATE 10/84
SHEET 11 / 22	

U.S. 20 OVER GRAND RIVER