

NOTES

FOR EXPANSION JOINT DETAILS SEE SHEET **16/22**

FOR REINFORCEMENT SCHEDULE AND BAR BENDING DIAGRAMS SEE SHEET **19/22** THRU **20/22**

ALL REINFORCING STEEL BAR MARKS PREFIXED "E" SHALL BE EPOXY COATED.

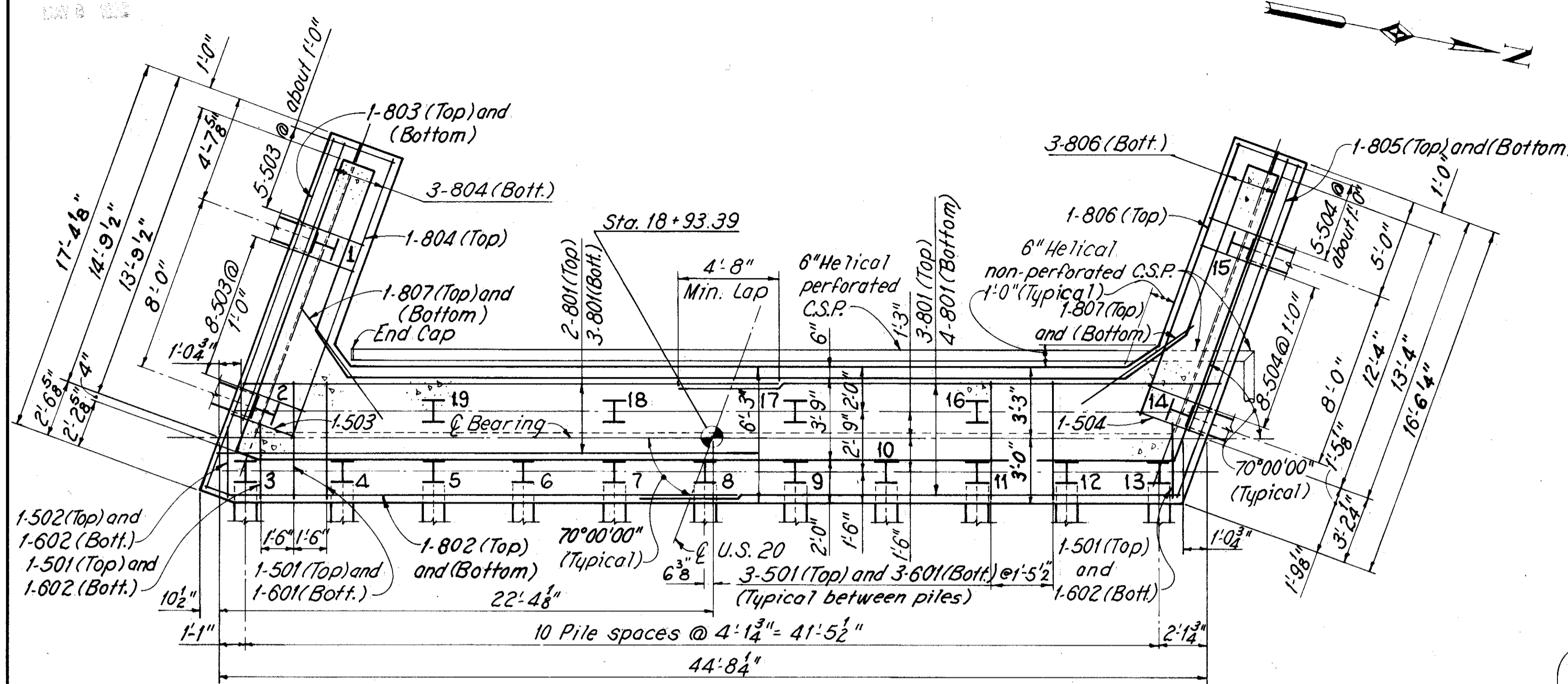
IN ADDITION TO THE PROVISIONS OF 511.08, BACKMALL CONCRETE ABOVE THE CONSTRUCTION JOINT AT THE APPROACH SLAB SEAT SHALL NOT BE PLACED UNTIL AFTER THE EXPANSION JOINT IS IN PLACE.

THE FOLLOWING ABBREVIATIONS ARE USED:

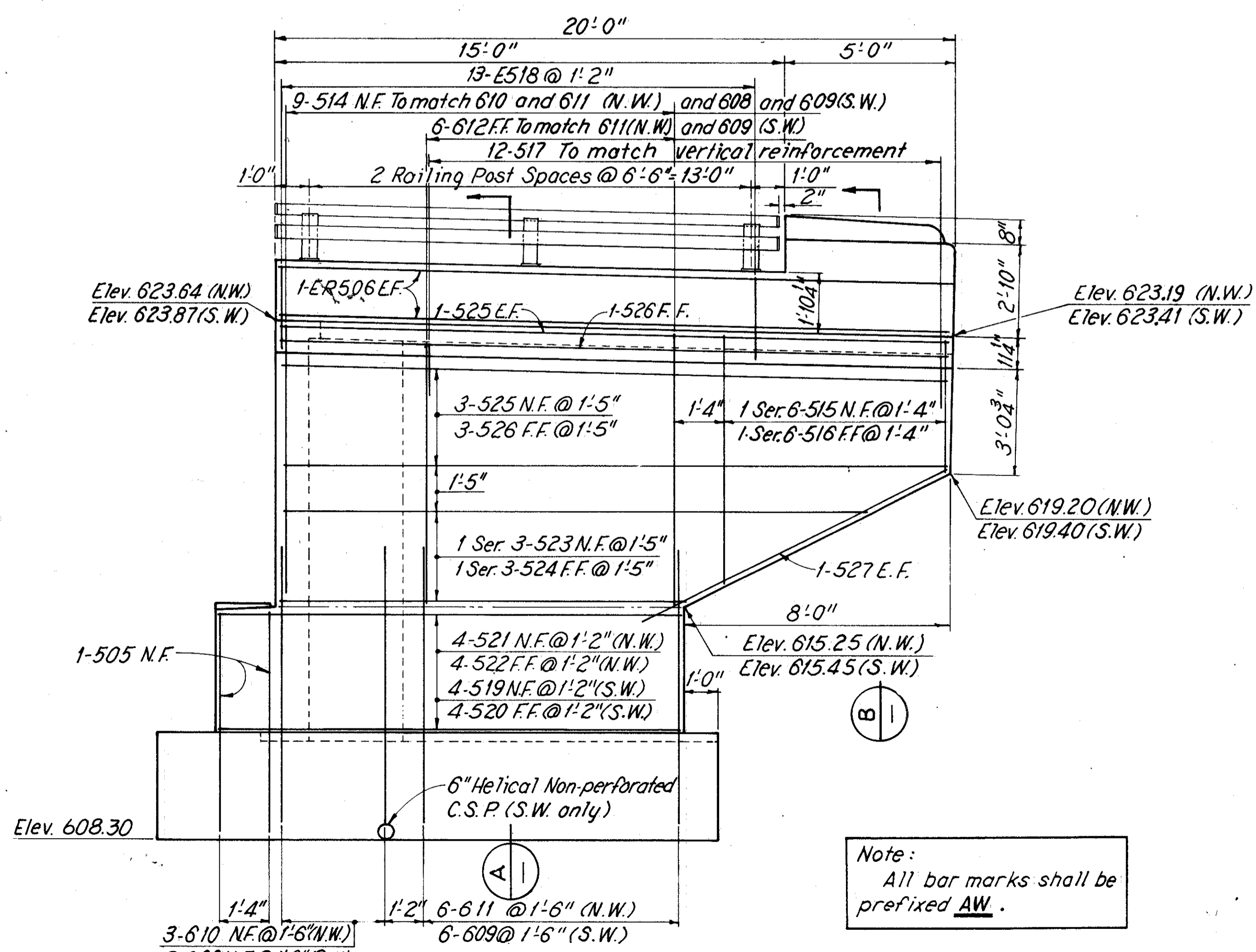
- N.F. = NEAR FACE
- F.F. = FAR FACE
- E.F. = EACH FACE
- CSP = CORRUGATED STEEL PIPE

FOR END POST DETAILS AND REINFORCING SEE STD. DRAWING BR-2-82

POROUS BACKFILL, FULL LENGTH OF ABUTMENT AND WINGS, SHALL EXTEND UP TO THE PLANE OF THE SUBGRADE WITHIN THE ROADWAY AREA EXTENDED LATERALLY TO THE WING WALLS, 1.5 FT. THICK AT THE ABUTMENT AND 2.0 FT. THICK AT THE WINGS.

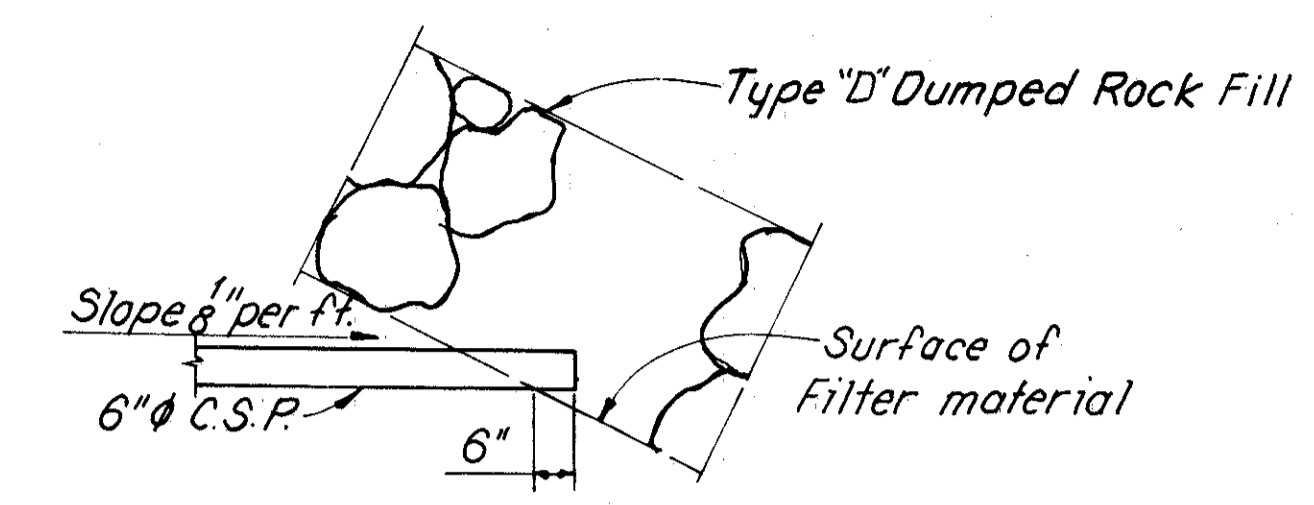


FOOTING PLAN

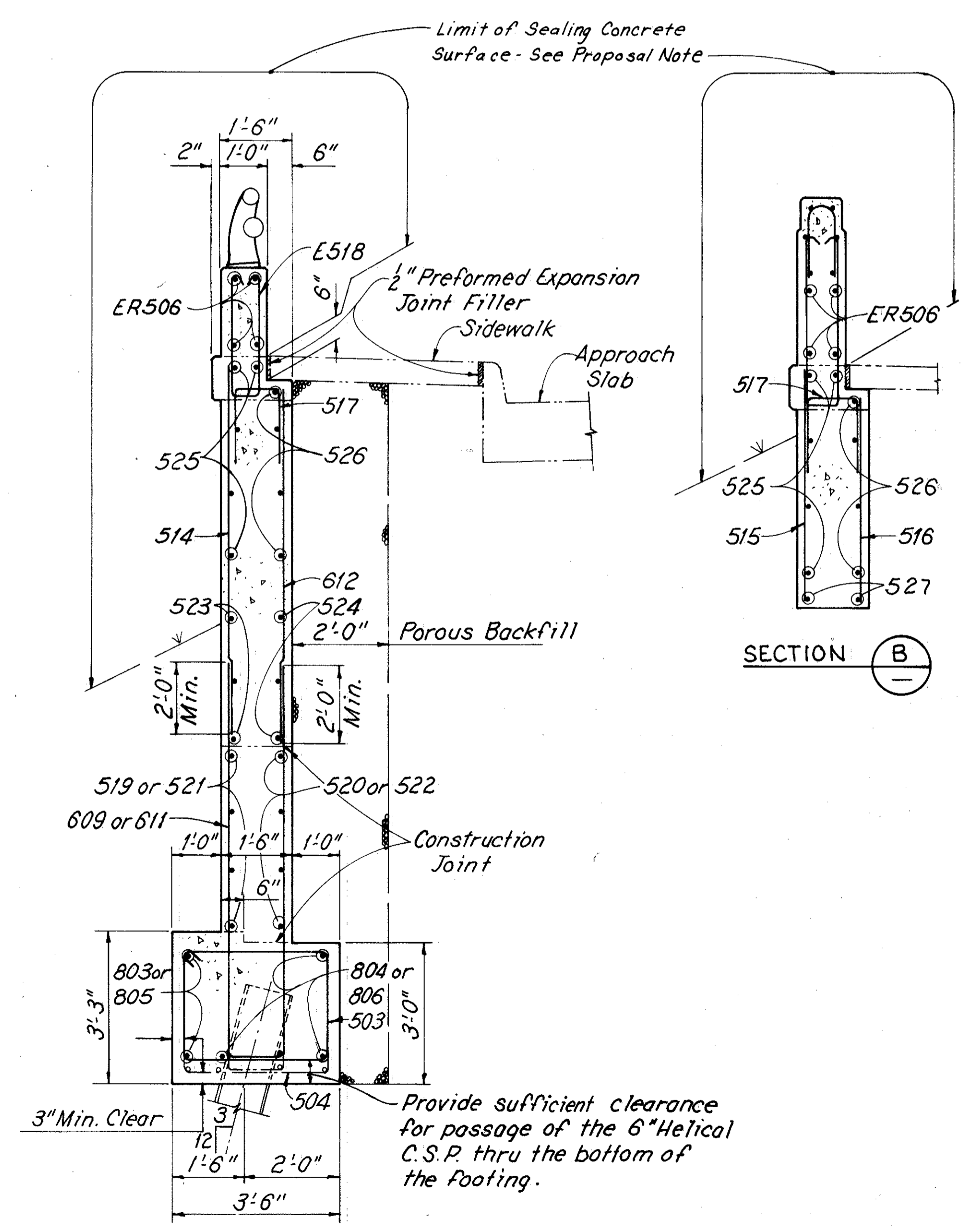


WINGWALL ELEVATION
(N.W.)-Northwest Wingwall shown
(S.W.)-Southwest Wingwall opposite hand

Note:
All bar marks shall be prefixed **AW**.



TERMINATION OF 6" C.S.P. AT THE FRONT SLOPE



SECTION A

SECTION B

WOODRUFF, INC.
CONSULTING ENGINEERS
CLEVELAND, OHIO

WEST ABUTMENT FOOTING PLAN
AND WINGWALL ELEVATION
U.S. ROUTE 20 OVER
THE GRAND RIVER

BR. NO. - LAK-20-17.23 FROM STA. 18+91.00
TO STA. 22+89.56.

LAKE COUNTY OHIO

MADE RCK	TRACED RCK	CHECKED DG	REVIEWED AJM	REVISED
DATE 8-84	DATE 8-84	DATE 10-84	DATE 10/84	SHEET 8 / 22