

# GRADING PLAN

NORTH SIDE OF U.S. 20

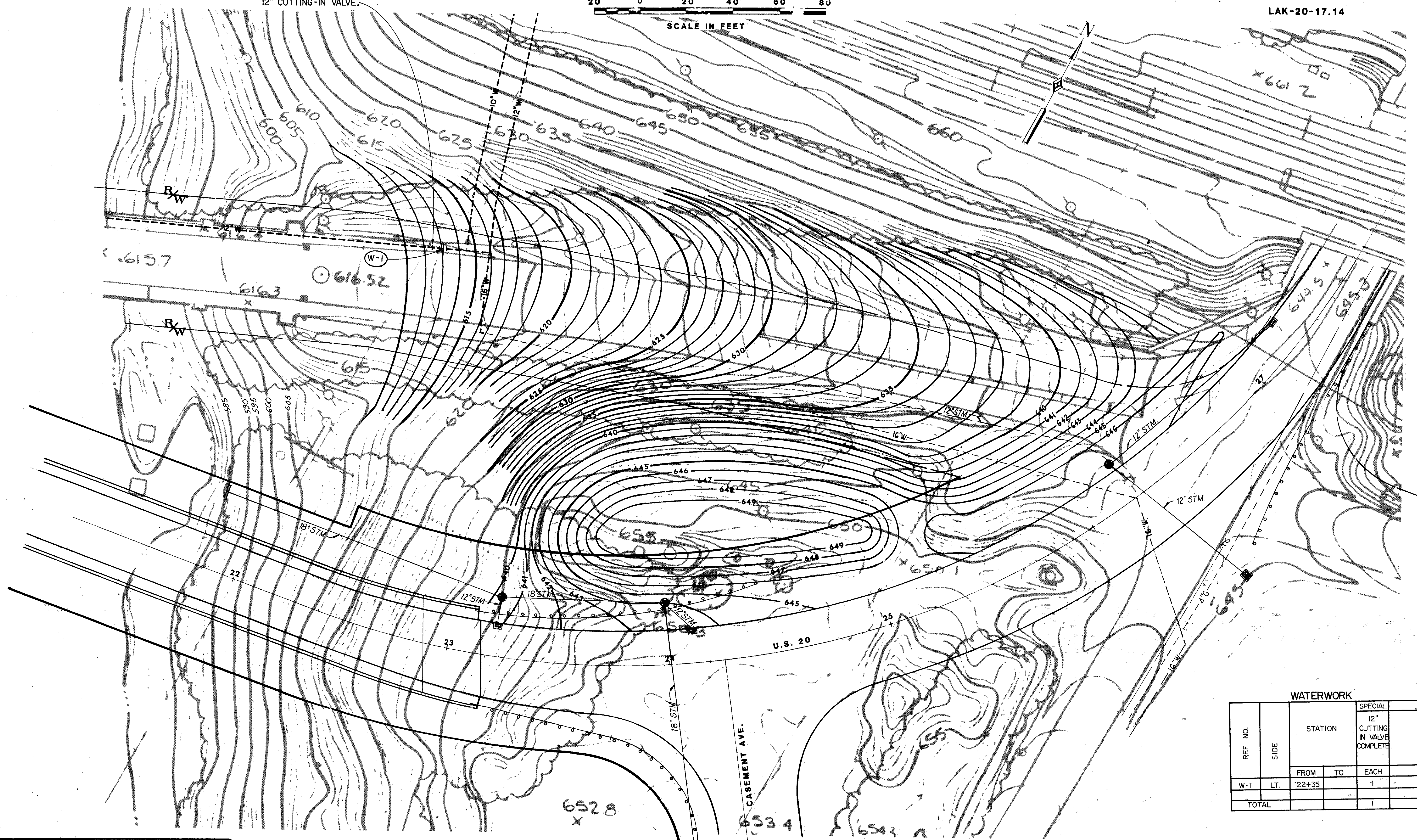


F.A.R.A. REGION	STATE	PROJECT
5	OHIO	

39  
86

LAKE COUNTY  
LAK-20-17.14

PROVIDE 2' STUB. PLUG  
END AND PROVIDE THRUST  
BLOCK. COST SHALL BE  
INCLUDED IN PRICE BID FOR  
12" CUTTING-IN VALVE.



WATERWORK				
REF. NO.	SIDE	STATION		SPECIAL
		FROM	TO	12" CUTTING IN VALVE COMPLETE
W-1	LT.	22+35		1
TOTAL				1

SCALE \_\_\_\_\_  
MADE \_\_\_\_\_ DATE 12-87  
TRCD. DATE 12-87  
C.E.D. DATE 12-87

**WOODRUFF, INC.**  
CONSULTING ENGINEERS  
CLEVELAND OHIO

U.S. 20 OVER GRAND RIVER