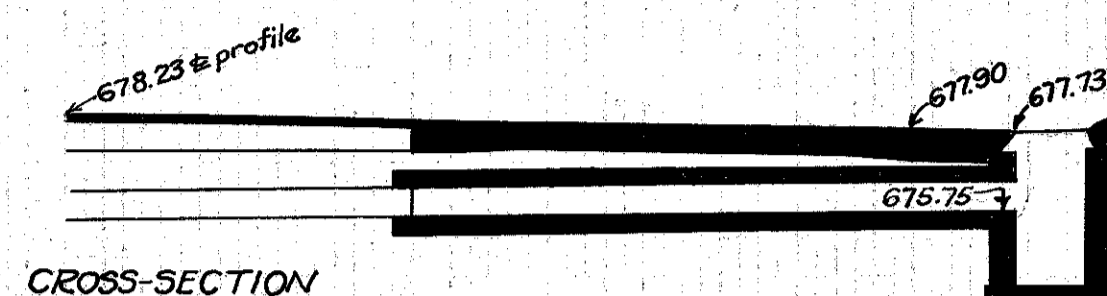
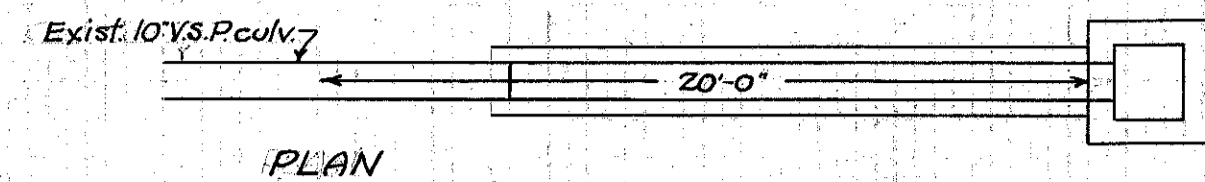


End Area		Cu. Yds.	
Cut	Fill	Cut	Fill



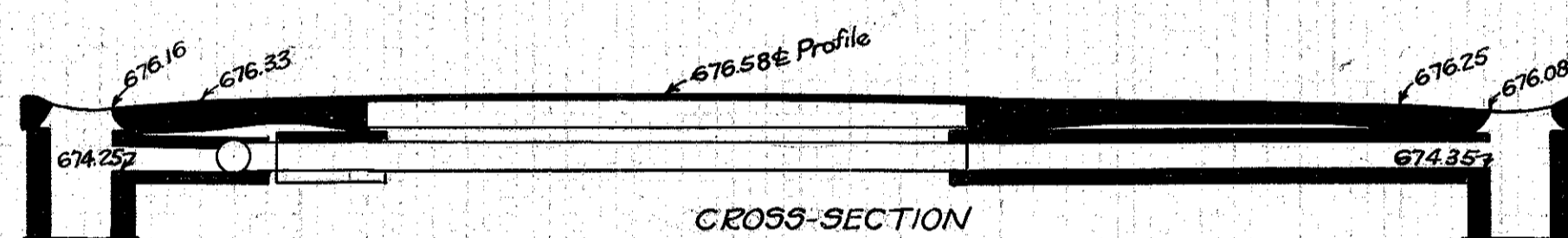
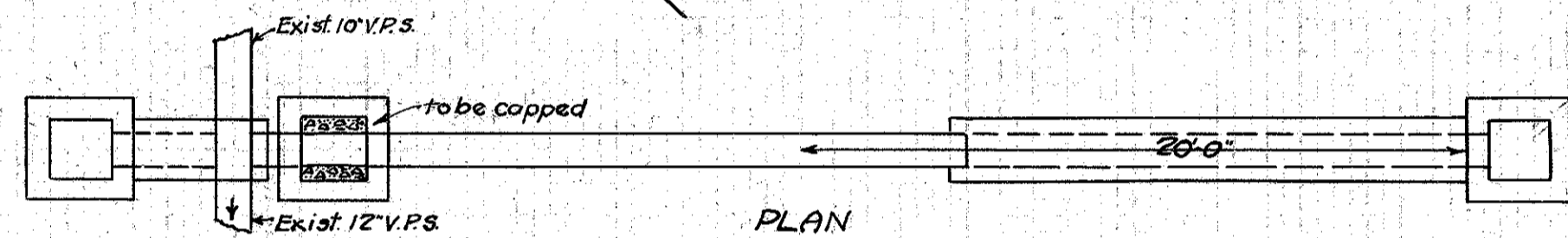
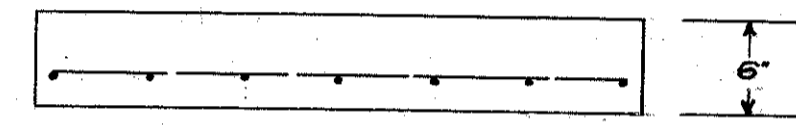
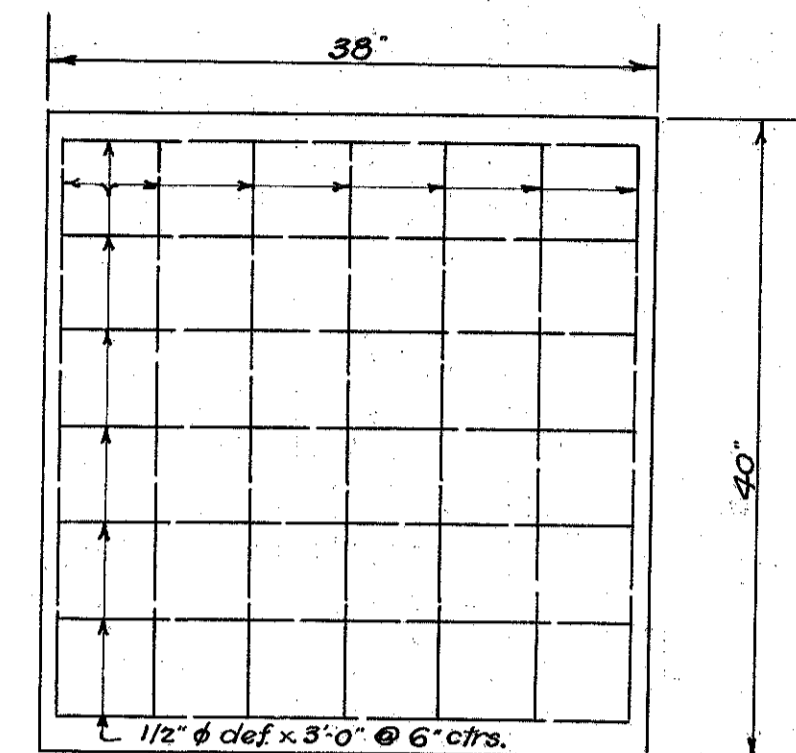
CULVERT DATA
 Type: Std. V.P. enc. culvert Dr. #300
 Size: 12" x 14"
 Work Req.: Extend pres. 10" V.P. culvert to R with 12" x 14" Std. V.P. enc. culvert. Build C.B. on R resetting old cover. Clean out exist. culvert.

EST. QUANTITIES
 Exc. 2.4 Cu. Yds. ✓
 12" V.P. enc. 14 Lin. Ft. ✓
 C.B. (old cover reset) 1 ✓

Drawn by: Plummer
 Date: 5/10/32

Checked by: Div'n. Engr.
 Date: Sta. 455+65

Detail of 1-6 Precast Concrete Slab used to cap old I.B.s on L.
 0.2 cu yds. 1-6 Concrete
 28 lbs. Reinforcing Steel

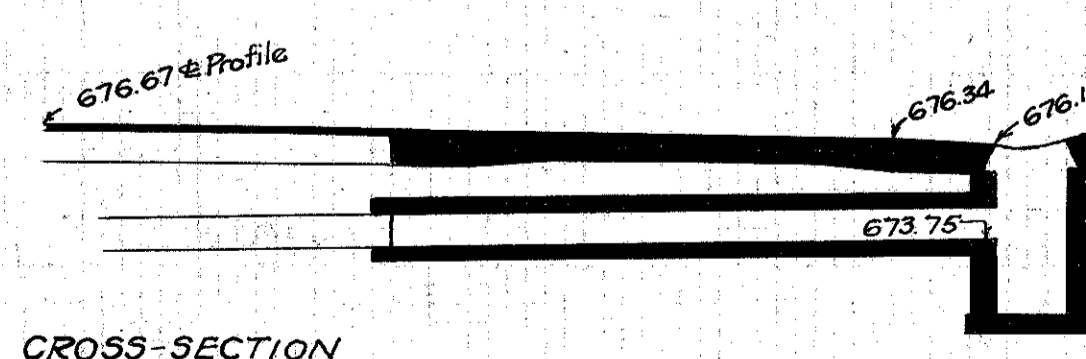
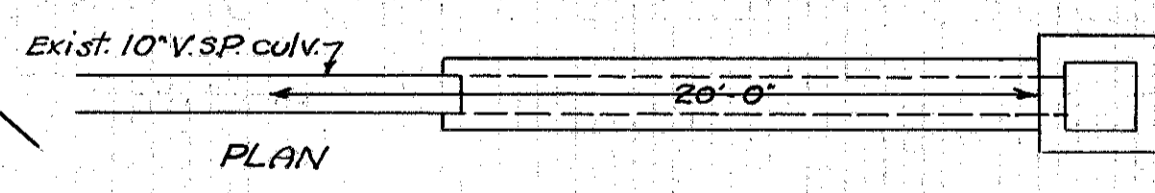


CULVERT DATA
 Type: Std. V.P. enc. culvert Dr. #300
 Size: 12" x 18"
 Work Req.: Extend pres. 10" V.P. culvert to R with 12" x 14" Std. V.P. enc. culvert. Build C.B. R+L, on L connect to pres. 12" V.P.S. with 12" x 4" V.P. enc. Cap old I.B. on L + clean out existing culvert.

EST. QUANTITIES
 Exc. 3.3 Cu. Yds. ✓
 12" V.P. enc. 18 Lin. Ft. ✓
 Con. 1-6 (Precast cap) 0.2 Cu. Yds. ✓
 Reinf. Steel 28 Lbs. ✓
 C.B.s (old covers reset) 2 ✓

Drawn by: Plummer
 Date: 5/10/32

Checked by: Div'n. Engr.
 Date: Sta. 449+62

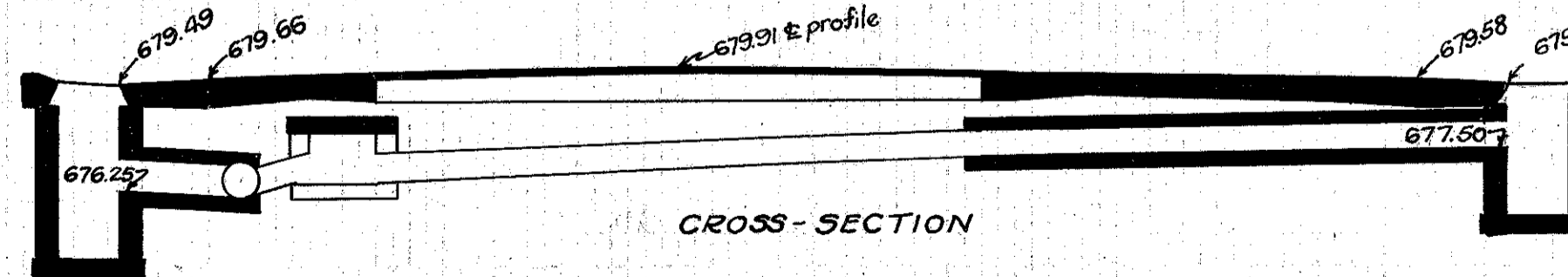
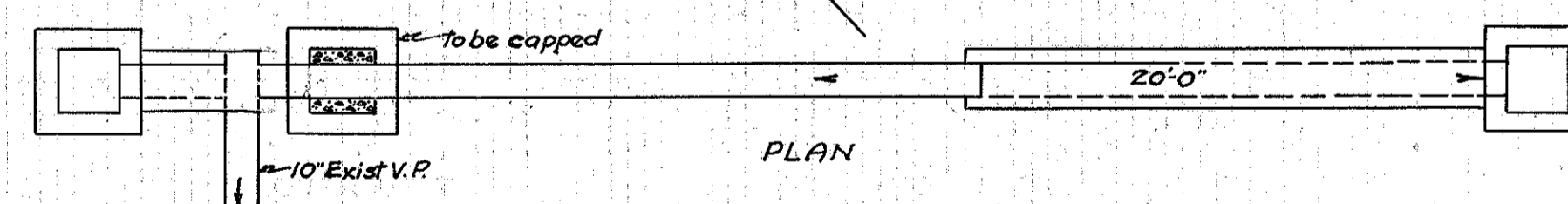


CULVERT DATA
 Type: Std. V.P. enc. culvert Dr. #300
 Size: 12" x 14"
 Work Req.: Extend pres. 10" V.P. culvert to R with 12" x 14" Std. V.P. enc. culvert. Build C.B. on R resetting old cover. Clean existing culvert.

EST. QUANTITIES
 Exc. 2.1 Cu. Yds. ✓
 12" V.P. enc. 14 Lin. Ft. ✓
 C.B. (old cover reset) 1 ✓

Drawn by: Plummer
 Date: 5/10/32

Checked by: Div'n. Engr.
 Date: Sta. 438+50



CULVERT DATA
 Type: Std. V.P. enc. culvert Dr. #300
 Size: 12" x 18"
 Work Req.: Extend pres. 10" V.P. culvert to R with 12" x 14" Std. V.P. enc. culvert. Build C.B. R+L, on L connect to exist. 10" V.P. with 12" x 4" V.P. enc. Clean out exist. culv., cap old I.B. on L

EST. QUANTITIES
 Exc. 3.3 Cu. Yds. ✓
 12" V.P. enc. 18 Lin. Ft. ✓
 Con. 1-6 (Precast Cap) 0.2 Cu. Yds. ✓
 Reinf. Steel 28 Lbs. ✓
 C.B.s (old covers reset) 2 ✓

Drawn by: Plummer
 Date: 5/10/32

Checked by: Div'n. Engr.
 Date: Sta. 461+65