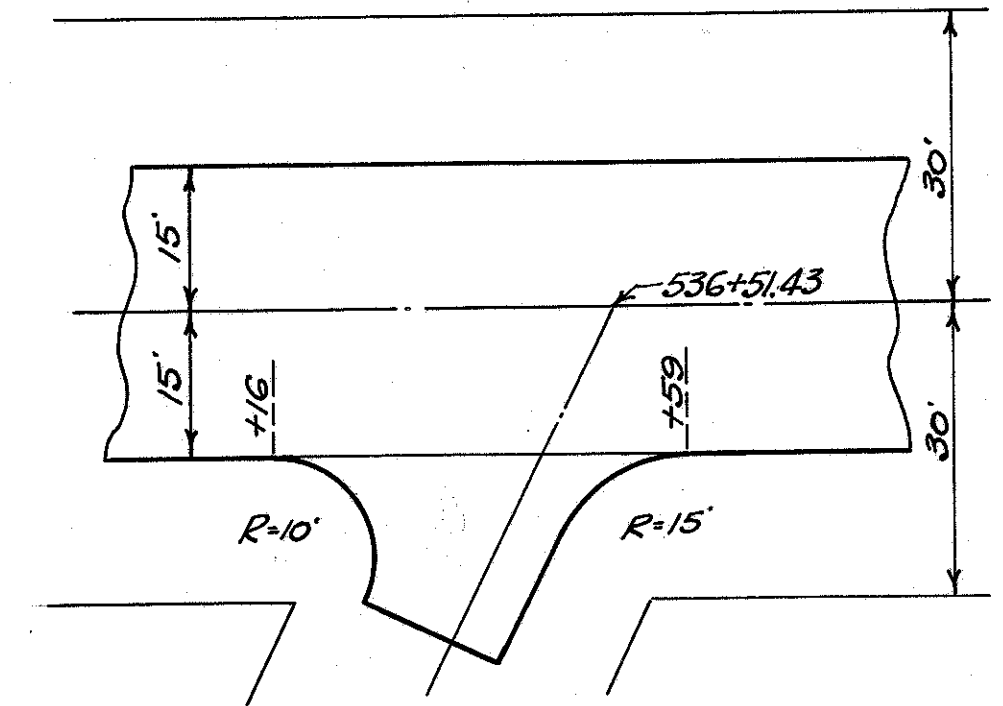
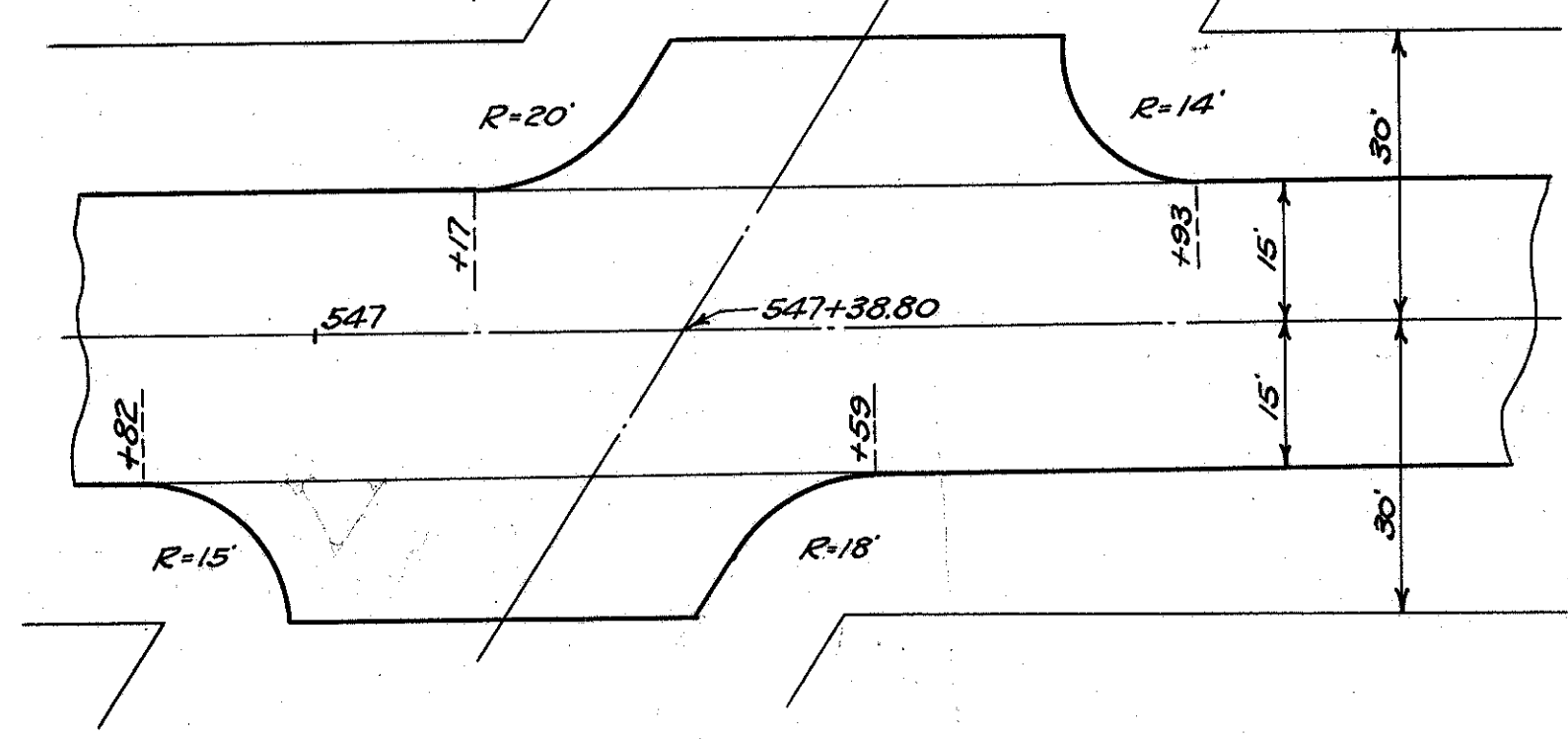


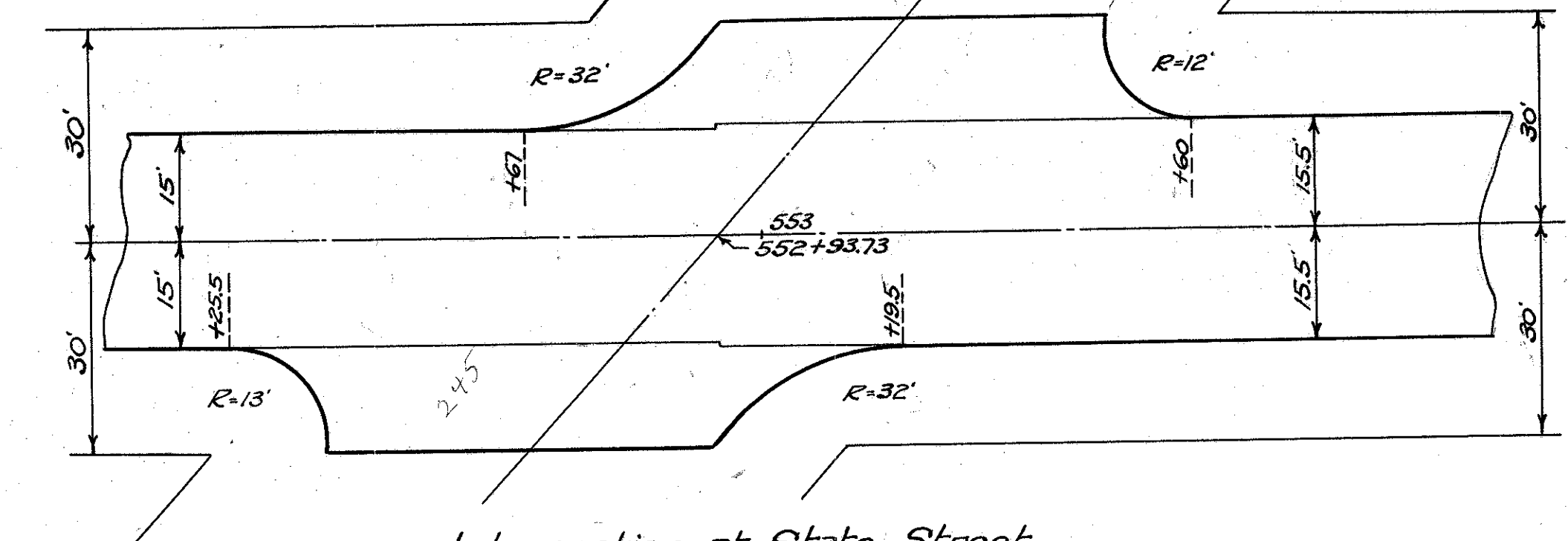
Intersection at Richmond Street
Station 534+43.15
143 Sq. yds. Bit. Surface T-50
239 Sq. yds. 8" conc. base B-70
54 cu. yds. excavation (inc. removal of 239 sq. yds. 4" brick pav.)



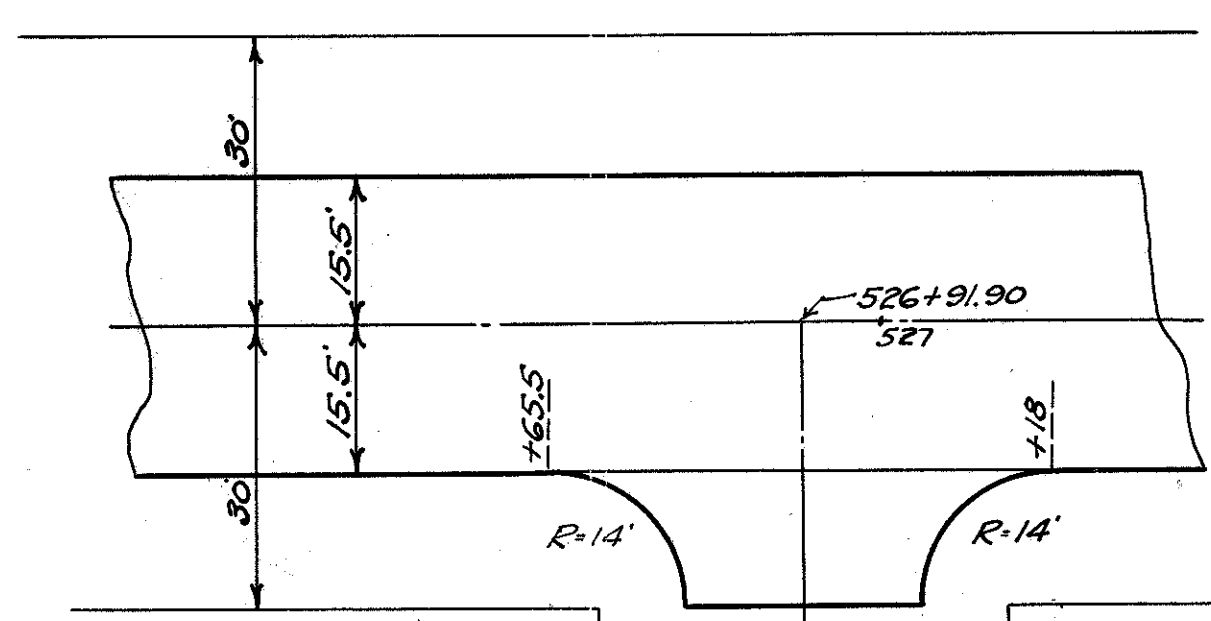
Intersection at Liberty Street Ext.
Station 536+51.43
43 Sq. Yds. Bit. Surface T-50



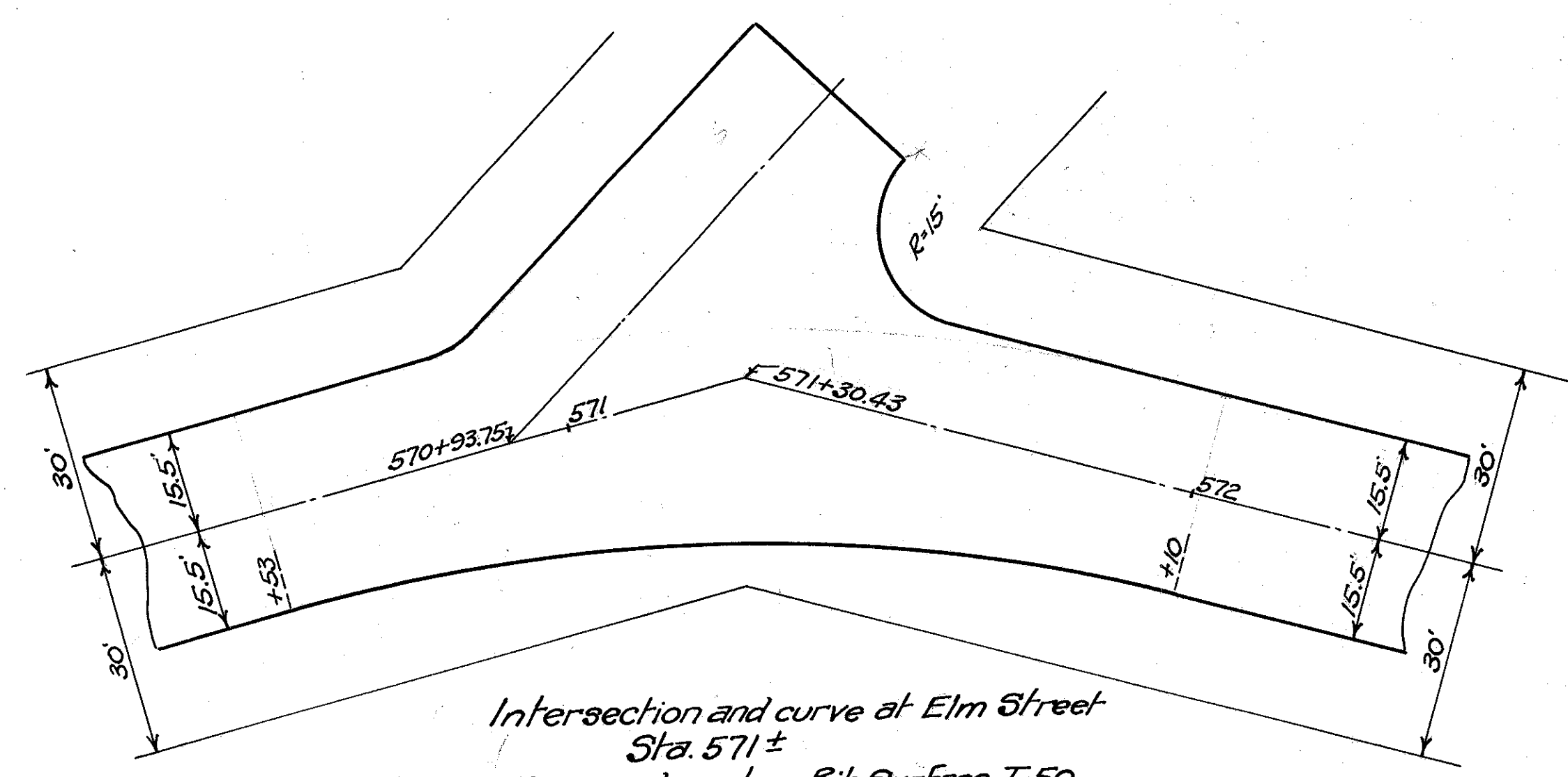
Intersection at St. Clair Street
Station 547+38.80
171 Sq. Yds. Bit. Surface T-50



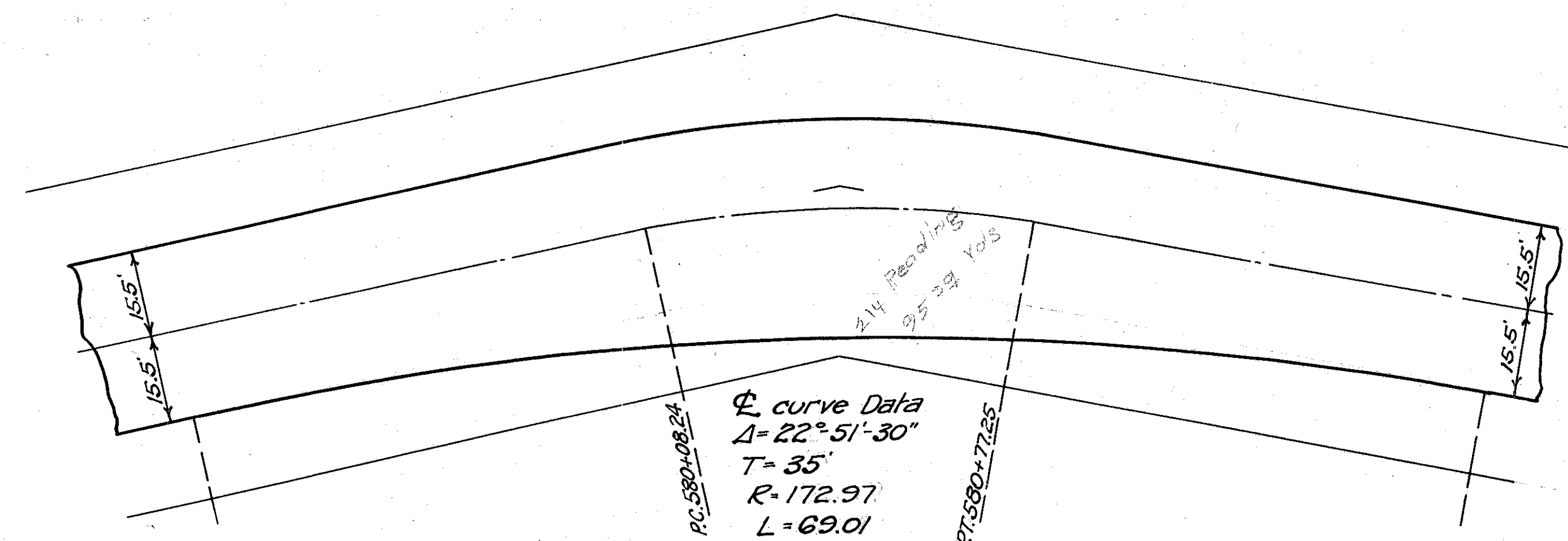
Intersection at State Street
Station 552+93.73
209 Sq. Yds. Bit. Surface T-50



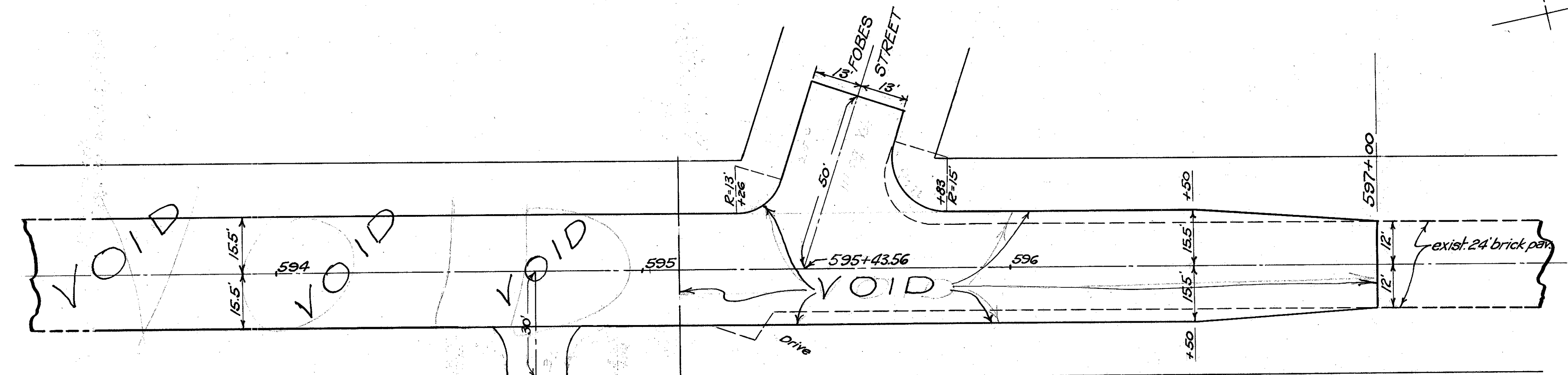
Intersection at Rockwood Drive
Station 556+91.90
47 sq. yds. Bit. Surface T-50



Intersection and curve at Elm Street
Sta. 571±
211 sq. yds. extra Bit. Surface T-50



Curve at Sta. 580±
96 sq. yds. extra Bit. Surface T-50



Intersection at Blair Place
Station 594+70.72
28 sq. yds. Bit. Surface T-50

Detail at end of Project
From 593+50 to Sta. 597+00
1466 cu. yds. roadway excavation (including removal of exist. pav. & curb)
1377 sq. yds. 8" conc. base Item B-70 (350' x 34'-2", 1251' yds. @ Blair Pl. + 37' yds. @ Blair Pl. + 112' yds. @ Fobes - 25' yds. @ end = 1577 sq. yds.)
724 lin. ft. integral conc. curb type I-A Std. drwg. 1-12 C.C.
125 sq. yds. extra Bit. surface T-50 (+38 sq. yds. @ Blair Pl. + 108.4 sq. yds. @ Fobes - 121.4 sq. yds. @ End (Transition) = 125 sq. yds.)
25 cu. yds. traffic bound surface (Blair Place & Fobes St. drives (T-10)
42 lin. ft. 9" x 22" conc. header