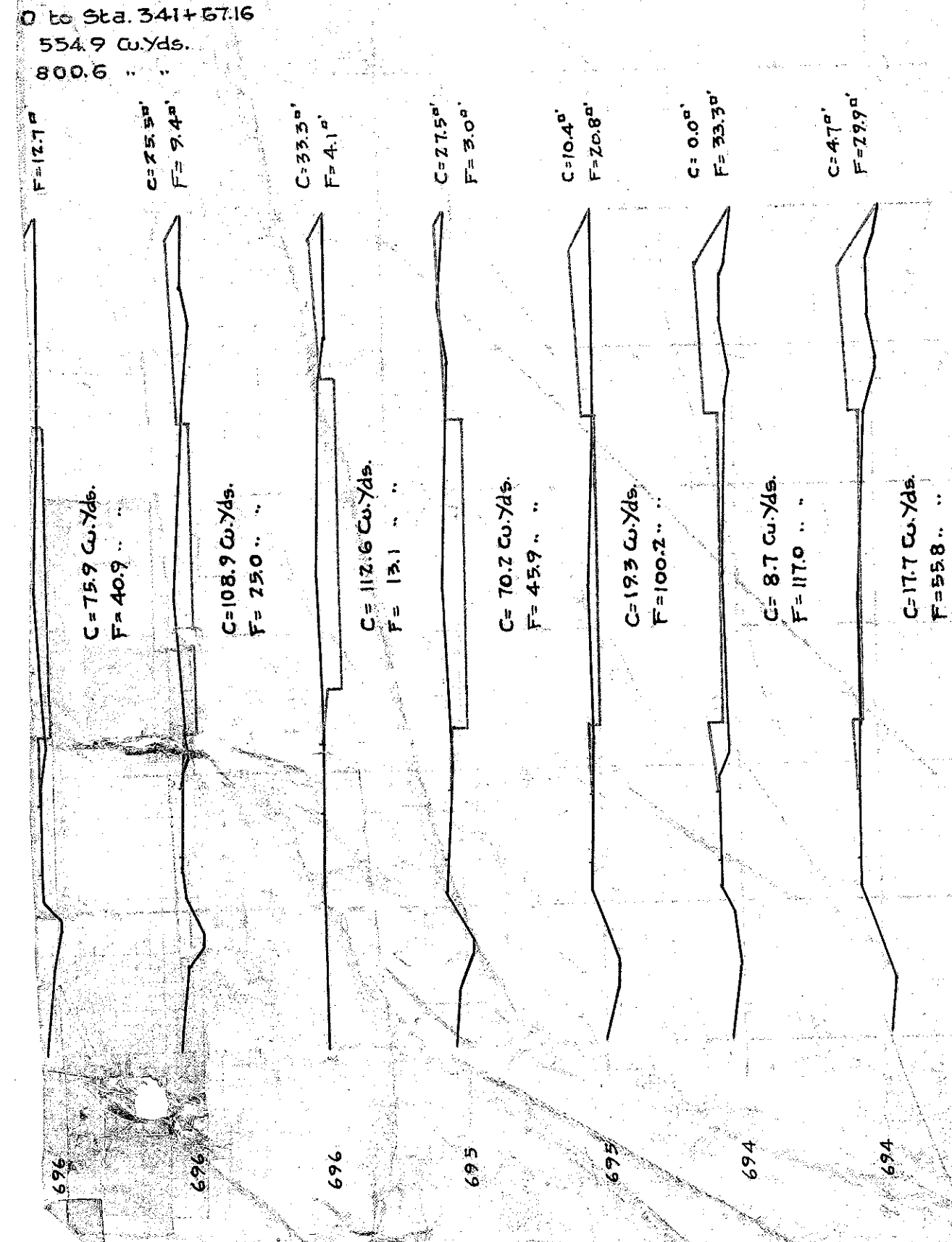
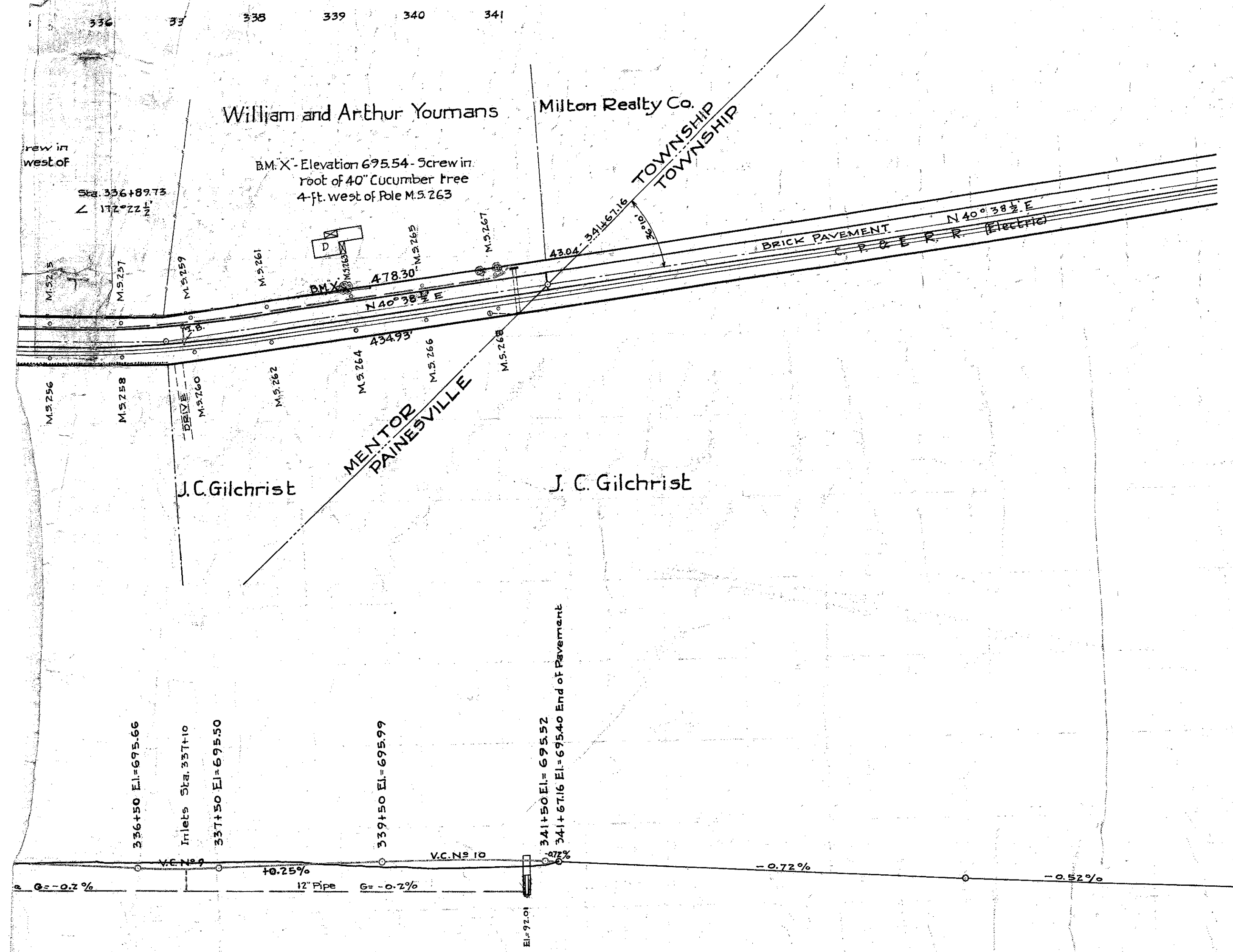


3/10



0 to Sta. 341+57.16
 554.9 Cu.Yds.
 800.6

C=75.9 Cu.Yds. F=409	C=108.9 Cu.Yds. F=250	C=112.6 Cu.Yds. F=191	C=70.2 Cu.Yds. F=459	C=19.3 Cu.Yds. F=100.2	C=8.7 Cu.Yds. F=117.0	C=11.7 Cu.Yds. F=55.8
F=17.1"	F=7.4"	F=4.1"	F=3.0"	F=2.8"	F=3.3"	F=2.7"