

LAKE COUNTY STATE HIGHWAY

U.S.R-20
I.C.H. No 2 PETITION No 852.

CLEVELAND - BUFFALO ROAD

FROM MENTOR VILLAGE TO PAINESVILLE TOWNSHIP

Datum of Elevations - U.S.G.S. Bench Mark '695' Cleveland - Elevation 695.25

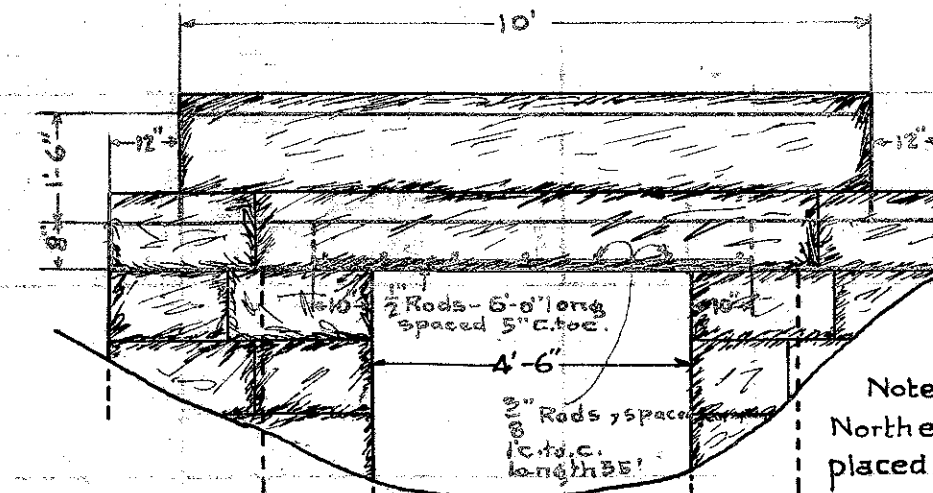
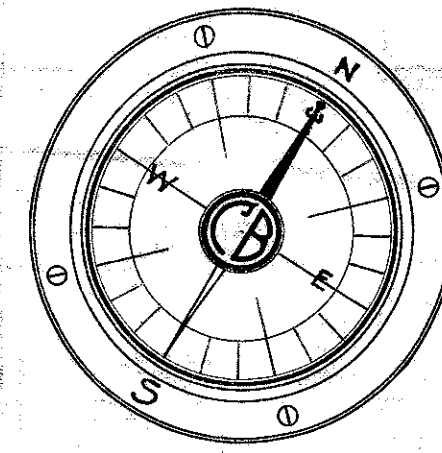
March 1st, 1915

H. P. CUMINGS - RESIDENT ENGINEER
C. S. FULLERTON - ASS'T - ENGINEER

APPROVED - *Frank B. Willis*
GOVERNOR OF OHIO.

APPROVED - *James R. Warner*
STATE HIGHWAY COMMISSIONER.

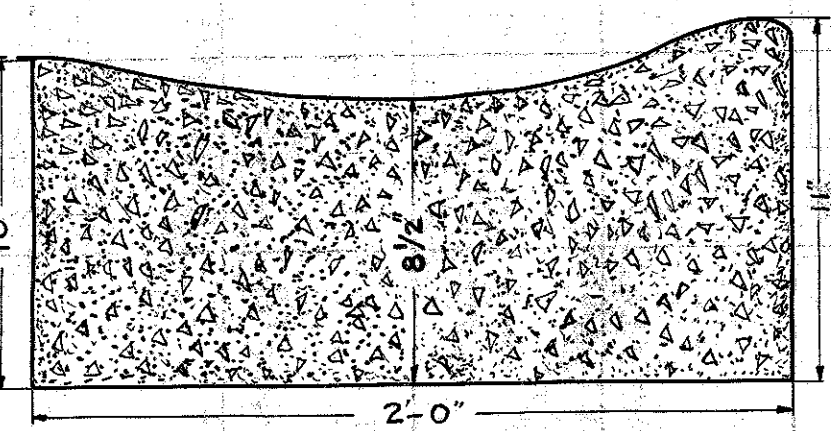
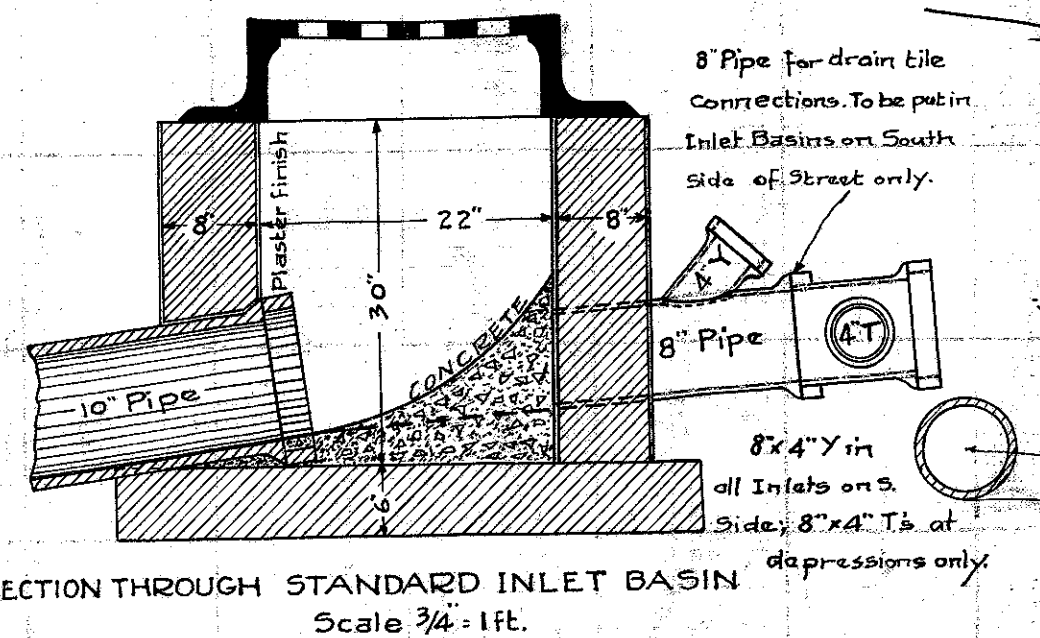
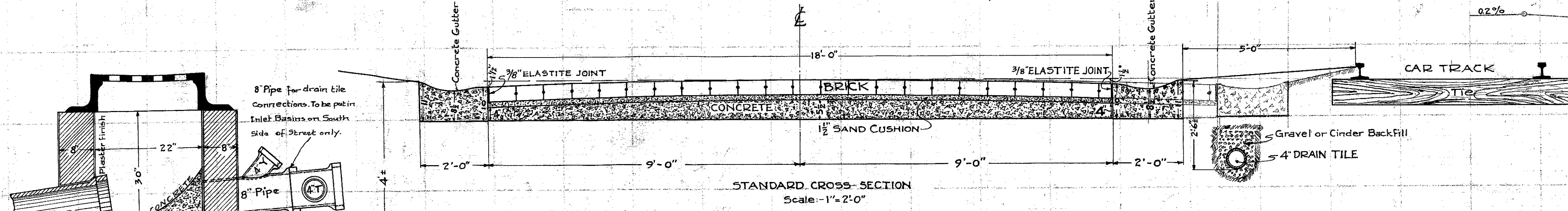
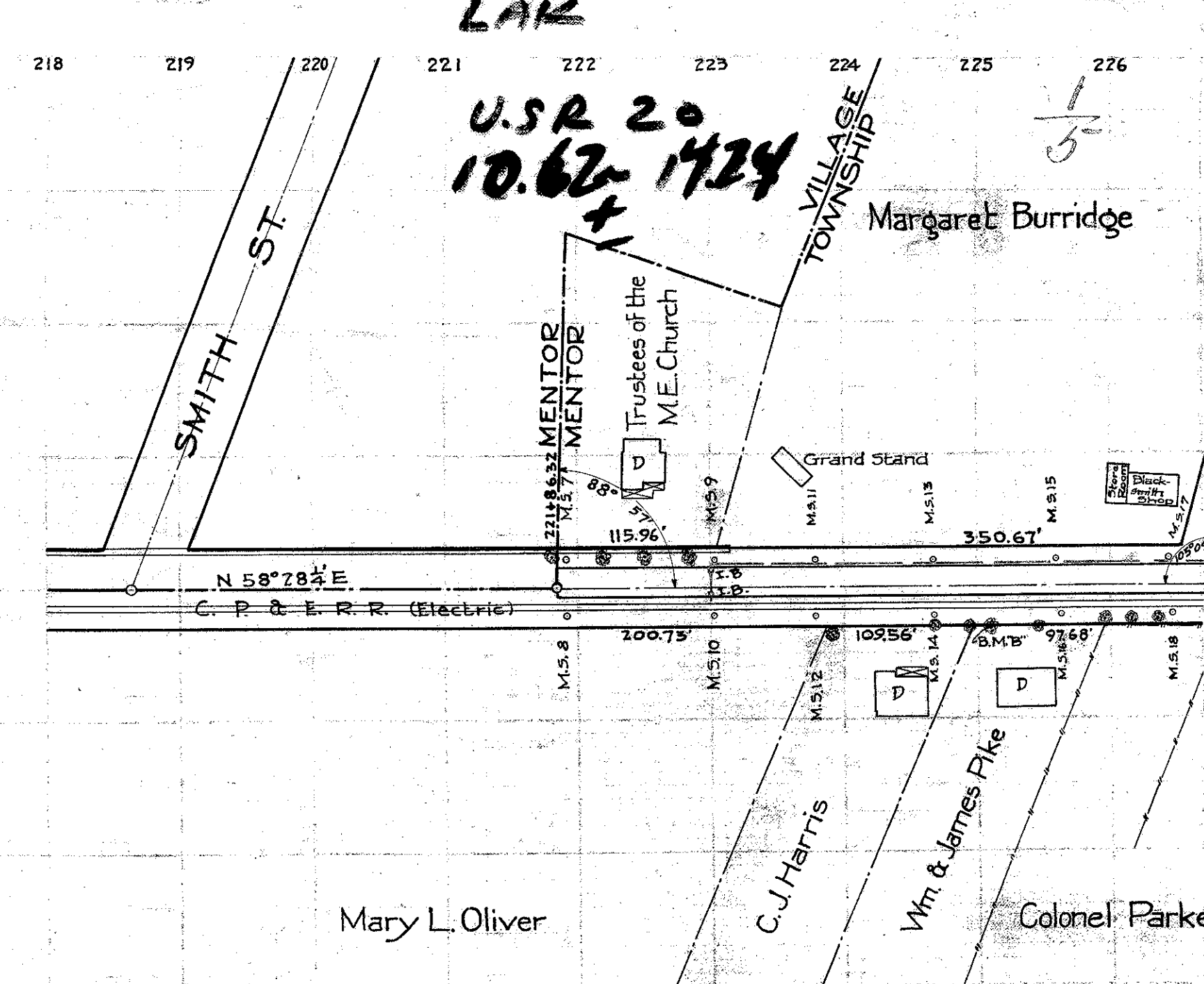
CONSTRUCTION BUREAU
APR 6 1915
GROUND PHOTOLAB



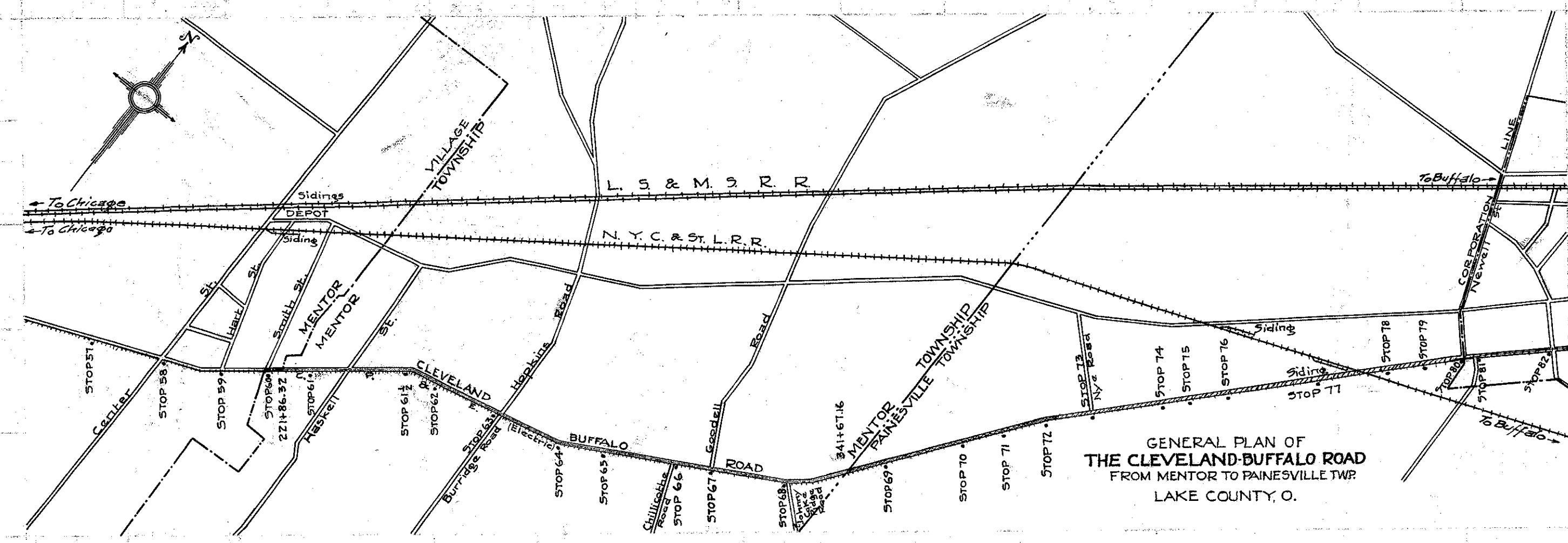
Note: Present Top of Culvert (between North end and St. Car Track) to be replaced with Reinforced Concrete Top, to be built according to State Highway Dept. Standard Plan of 5'x3' Reinforced Concrete Culvert. Concrete-1:2:4 mix.

APPROXIMATE QUANTITIES

Grading (excavation)	7793.10 Cu. Yds.
Grading Fill (possible within limits of Right of Way to be made in each section where excavation will provide)	5056.30 Cu. Yds.
Brick Pavement on Concrete Foundation	23962.00 Sq. Yds.
Concrete Gutter	23962.00 Lin. feet
4" Vitrified Drain Tile between Car Track and Pavement	11980.00 Lin. feet
Twelve Inch Pipe Sewer	5190.00 Lin. feet
Ten Inch Pipe Sewer	3900.00 Lin. feet
Inlet Basins including Y and T connections for drain tile	38
Manholes	1
10'x12' Y's	11
10'x10' Y's	8
Concrete in Headwall and Top for Culvert at Station 241+50	6.42 Cu. Yds.
1/2" Reinforcing Rods for Culvert Top	433.50 Pounds
3/8" Reinforcing Rods for Culvert Top	83.65 "
4" Drain Tile to be taken up	1170.00 Lin. feet.



Specifications: - 1 part Portland cement; 2 parts fine aggregate; 4 parts coarse aggregate. (gravel) Tamped and floated to a true surface.



Station 221+86.32 to Station 221+86.32	Cu. 216.6	F. 5.4
Station 221+86.32 to Station 221+86.32	Cu. 124.6	F. 5.2
Station 221+86.32 to Station 221+86.32	Cu. 72.6	F. 14.6
Station 221+86.32 to Station 221+86.32	Cu. 80.1	F. 5.0
Station 221+86.32 to Station 221+86.32	Cu. 74.6	F. 6.1
Station 221+86.32 to Station 221+86.32	Cu. 79.8	F. 5.0
Station 221+86.32 to Station 221+86.32	Cu. 109.1	F. 17.6

000164