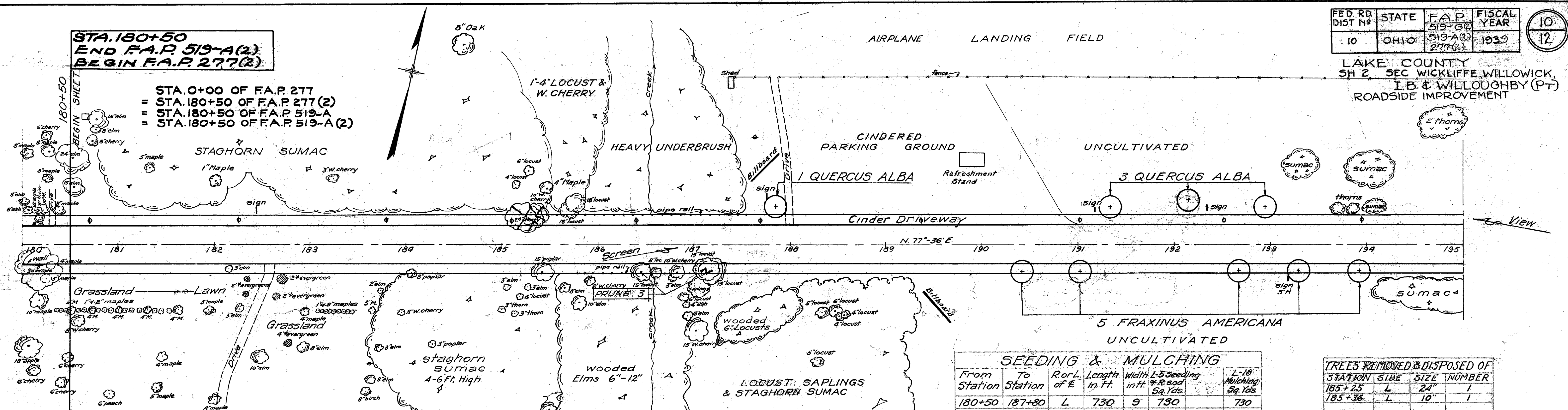


LAKE COUNTY  
SH 2, SEC WICKLIFFE, WILLOWICK,  
I.B. & WILLOUGHBY (PT)  
ROADSIDE IMPROVEMENT



STA. 180+50  
END F.A.P. 519-A(2)  
BEGIN F.A.P. 277(2)

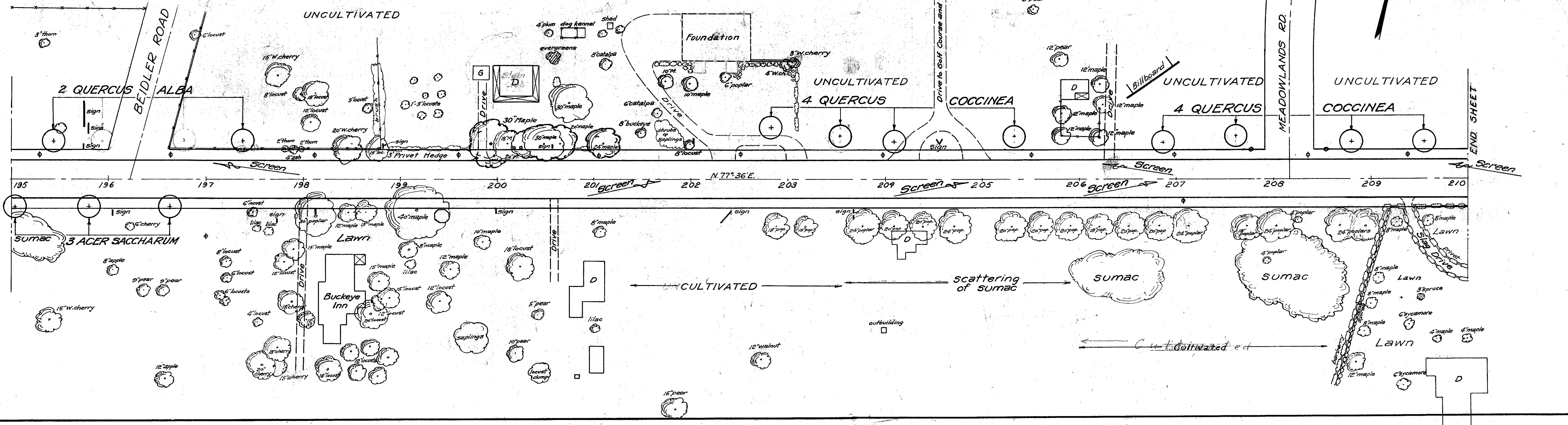
STA. 0+00 OF F.A.P. 277  
= STA. 180+50 OF F.A.P. 277(2)  
= STA. 180+50 OF F.A.P. 519-A  
= STA. 180+50 OF F.A.P. 519-A(2)

QUANTITIES FOR SHEET NO 10

Item	Quantity	Unit	Materials & Operations	Sizes		Spacing
				Caliper (in.)	Height (ft)	
L-14	6	Each	Quercus alba (white oak)	1 1/2 to 1 3/4		as shown
L-14	5	Each	Fraxinus americana (white ash)	1 1/2 to 1 3/4		as shown
L-14	3	Each	Acer saccharum (sugar maple)	1 1/2 to 1 3/4		as shown
L-14	8	Each	Quercus coccinea (scarlet oak)	1 1/2 to 1 3/4		as shown
L-18	3798	Sq. Yds.	Straw Mulch (including stabilizing)			
L-5	3798	Sq. Yds.	Seeding and renovating existing sod			
L-9	342	Lbs.	Commercial fertilizer #2 @ 10 lbs. per 1000 sq. ft.			
L-17	3	Each	Pruning existing trees 12 inch caliper			
L-17	0	Each	Pruning existing trees 30 inch caliper			
E-9	2	Each	Trees & stumps to be removed & disposed of			

SEEDING & MULCHING						
From Station	To Station	R.or L.	Length in ft.	Width in ft.	L-5 Seeding Sq. Yds.	L-18 Mulching Sq. Yds.
180+50	187+80	L	730	9	730	730
190+90	196+0	L	510	9	510	510
196+60	200+8	L	358	9	358	358
201+05	204+10	L	305	9	305	305
205+17	206+25	L	108	6	72	72
206+35	210+0	L	365	9	365	365
180+50	182+50	R	200	9	200	200
183+80	185+70	R	190	9	190	190
188+40	191+80	R	340	9	340	340
199+15	202+0	R	285	9	285	285
203+42	208+37	R	495	9	495	495
Totals					3850	3850
Deduct for drives etc. in above stations					52	52
TOTAL FOR SHEET					3798	3798

TREES REMOVED & DISPOSED OF			
STATION	SIDE	SIZE	NUMBER
185+25	L	24"	1
185+36	L	10"	1
TOTAL		10"-24"	2



Golf Course

Drive to Golf Course and Driving Range

END SHEET