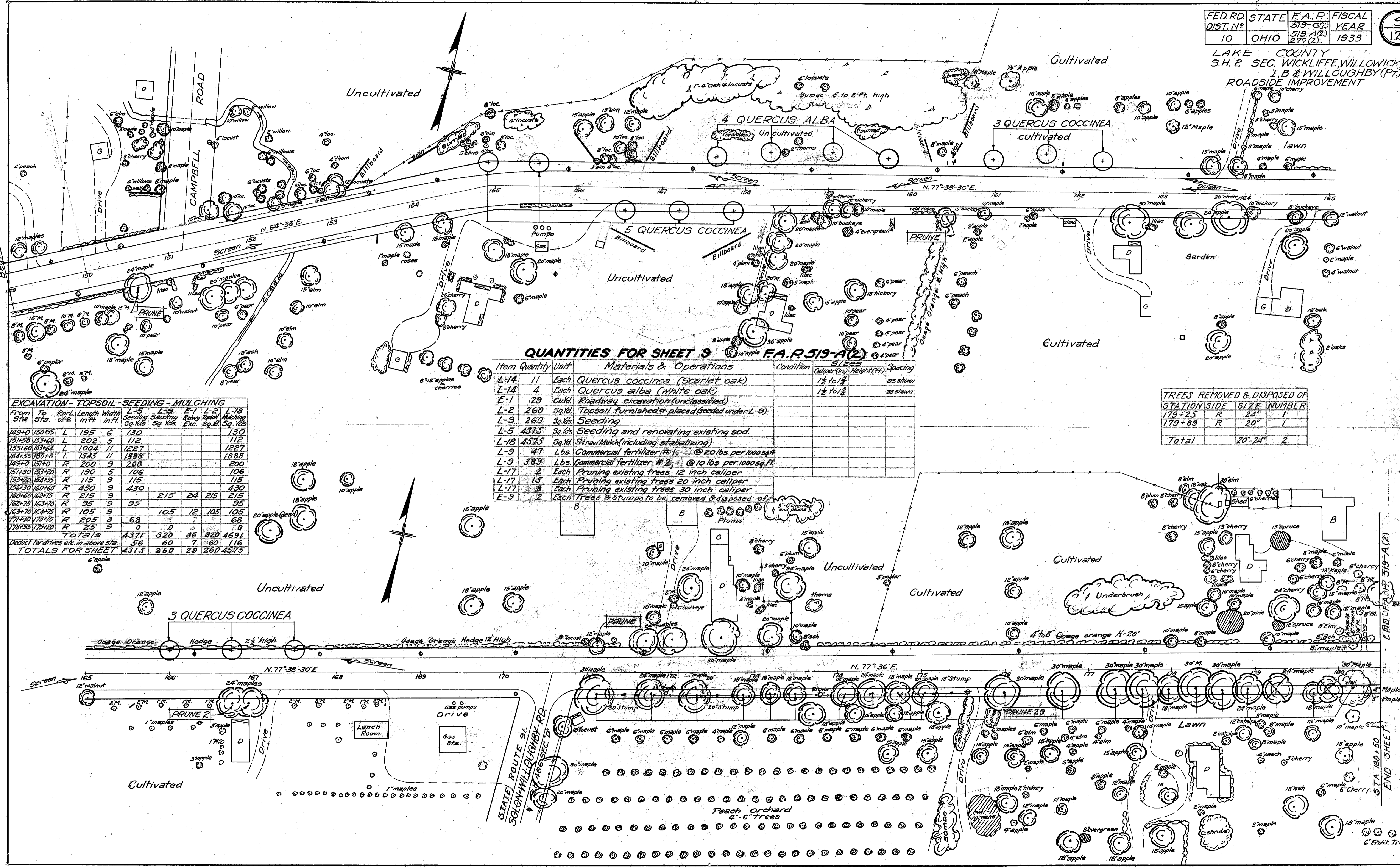


LAKE COUNTY
S.H. 2 SEC. WICKLIFFE, WILLOWICK,
I. B. & WILLOUGHBY (P)
ROADSIDE IMPROVEMENT



QUANTITIES FOR SHEET 9 F.A.P. 519-A(2)

Item	Quantity	Unit	Materials & Operations	Condition	SIZES (Caliper (In.) Height (Ft.))	Spacing
L-14	11	Each	Quercus coccinea (Scarlet oak)		1 1/2 to 2"	as shown
L-14	4	Each	Quercus alba (White oak)		1 1/2 to 2"	as shown
E-1	29	Cu. Yd.	Roadway excavation (unclassified)			
L-2	260	Sq. Yd.	Topsoil furnished & placed (seeded under L-9)			
L-9	260	Sq. Yd.	Seeding			
L-5	431.5	Sq. Yd.	Seeding and renovating existing sod.			
L-18	45.75	Sq. Yd.	Straw Mulch (including stabilizing)			
L-9	47	Lbs.	Commercial fertilizer #1 @ 20 lbs per 1000 sq. ft.			
L-9	389	Lbs.	Commercial fertilizer #2 @ 10 lbs per 1000 sq. ft.			
L-17	2	Each	Pruning existing trees 12 inch caliper			
L-17	15	Each	Pruning existing trees 20 inch caliper			
L-17	8	Each	Pruning existing trees 30 inch caliper			
E-9	2	Each	Trees & Stumps to be removed & disposed of			

EXCAVATION - TOPSOIL - SEEDING - MULCHING

From Sta.	To Sta.	Ror. L. of E.	Length of E. in Ft.	Width in Ft.	L-5 Seeding Sq. Yds.	L-9 Seeding Sq. Yds.	L-18 Mulch Sq. Yds.	L-21 Topsoil Sq. Yds.	L-18 Mulch Sq. Yds.
149+0	150+25	L	195	6	130				130
151+58	153+60	L	202	5	112				112
153+60	155+64	L	104	11	122.7				122.7
164+55	180+0	L	154.5	11	188.8				188.8
149+0	151+0	R	200	9	200				200
151+30	153+20	R	190	5	106				106
153+20	154+35	R	115	9	115				115
156+30	160+60	R	430	9	430				430
160+60	162+75	R	215	9	215	24	215	215	215
162+75	163+70	R	95	9	95				95
163+70	164+75	R	105	9	105	12	105	105	105
171+10	173+15	R	205	3	68				68
178+95	179+20	R	25	9	0				0
TOTALS					4371	320	36	320	4691
Deduct for drives etc. in above sta.					56	60	7	60	116
TOTALS FOR SHEET					4315	260	29	260	4575

TREES REMOVED & DISPOSED OF STATION SIDE

STATION	SIZE	NUMBER
179+25	R 24"	1
179+89	R 20"	1
Total	20"-24"	2

END SHEET 519-A(2)
STA. 180+50