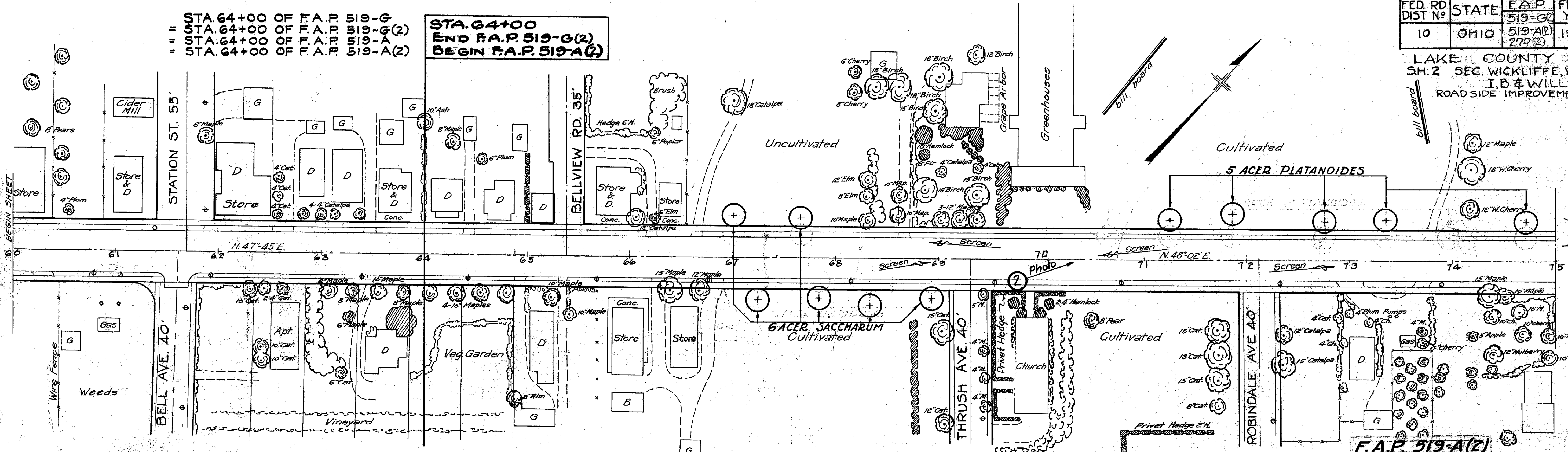


= STA. 64+00 OF F.A.P. 519-G
 = STA. 64+00 OF F.A.P. 519-G(2)
 = STA. 64+00 OF F.A.P. 519-A
 = STA. 64+00 OF F.A.P. 519-A(2)

STA. 64+00
 END F.A.P. 519-G(2)
 BEGIN F.A.P. 519-A(2)

FED. RD DIST No	STATE	F.A.P. No	FISCAL YEAR	6 12
10	OHIO	519-G(2) 519-A(2) 277(2)	1939	

LAKE COUNTY LEAD
 SH. 2 SEC. WICKLIFFE, WILLOWICK,
 I.B. & WILLOUGHBY (PT)
 ROADSIDE IMPROVEMENT



QUANTITIES FOR SHEET NO 6 F.A.P. 519-A(2) & 519-G(2)

Item	Quantities		Unit	Materials & Operations	Condition	SIZES		Spacing
	F.A.P. 519-A(2)	F.A.P. 519-G(2)				Caliper (Inches)	Height (Feet)	
L-14	14	14	Each	Acer saccharum (Sugar Maple)		1 1/2 to 1 3/4		As shown
L-14	5	5	Each	Acer platanoides (Norway Maple)		1 1/2 to 1 3/4		As shown
L-14	7	7	Each	Quercus coccinea (Scarlet Oak)		1 1/2 to 1 3/4		As shown
L-9	184	1778	Sq. Yds.	Seeding				
E-1	11	72	Cu. Yds.	Roadway excavation (unclassified)				
L-2	1101	715	Sq. Yds.	Topsoil furnished & placed (areas seeded under L-9)				
L-5	365	365	Sq. Yds.	Seeding & renovating existing sod				
L-9	33	370	Lbs.	Commercial fertilizer #1, @ 20 lbs. per 1000 sq. ft.				
L-9	33	33	Lbs.	Commercial fertilizer #2, @ 10 lbs. per 1000 sq. ft.				
L-18	184	2143	Sq. Yds.	Straw Mulch (including stabilizing)				
L-17	4	4	Cu. Yds.	Traffic bound side approaches - 3 inches deep				

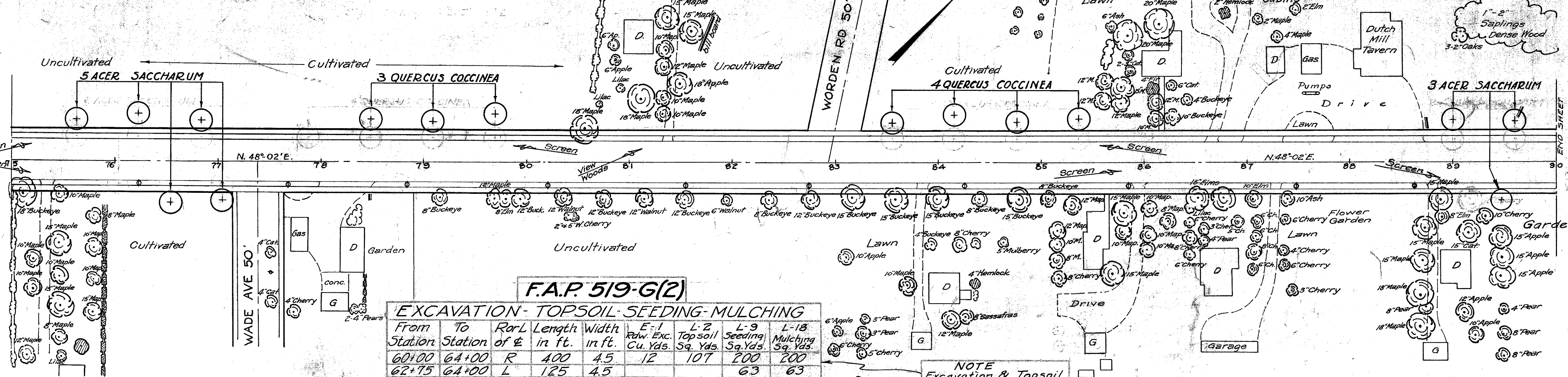
F.A.P. 519-A(2)

TRAFFIC BOUND SIDE APPROACHES

From Station	To Station	Ror L	Length in ft.	Width in ft.	L-17 Approaches Cu. Yds.
65+70	66+90	R	120	4.5	5
Deduct for existing drives					
TOTALS FOR SHEET					

EXCAV. - SEEDING - TOPSOIL - MULCHING

From Station	To Station	Ror L	Length in ft.	Width in ft.	L-5 Seeding & Road Sq. Yds.	L-9 Seeding Sq. Yds.	Exc. Cud.	Topsoil Sq. Yds.	Mulch Sq. Yds.
64+00	68+60	L	460	4.5		230			230
68+72	86+93	L	1821	4.5		911			911
88+70	90+00	L	130	4.5		65			65
64+00	65+70	R	170	4.5		85	9	85	85
66+90	69+10	R	220	4.5		110	12	110	110
69+47	77+15	R	768	4.5	384				384
78+55	79+80	R	25	4.5	23				23
79+00	90+00	R	1100	4.5		550	67	550	550
Totals					407	1951	82	185	2298
Deduct for side approaches & drives in above stations					42	173	10	30	215
TOTALS FOR SHEET					365	1778	72	175	2143



F.A.P. 519-G(2)

EXCAVATION - TOPSOIL - SEEDING - MULCHING

From Station	To Station	Ror L	Length in ft.	Width in ft.	E-1 Rdw. Exc. Cu. Yds.	L-2 Topsoil Sq. Yds.	L-9 Seeding Sq. Yds.	L-18 Mulching Sq. Yds.
60+00	64+00	R	400	4.5	12	107	200	200
62+75	64+00	L	125	4.5			63	63
Totals					12	107	263	263
Deduct for side approaches & drives in above Sta's					1	6	79	79
TOTALS FOR SHEET					11	101	184	184

NOTE
Excavation & Topsoil from Sta. 61+85 to Sta. 64+00