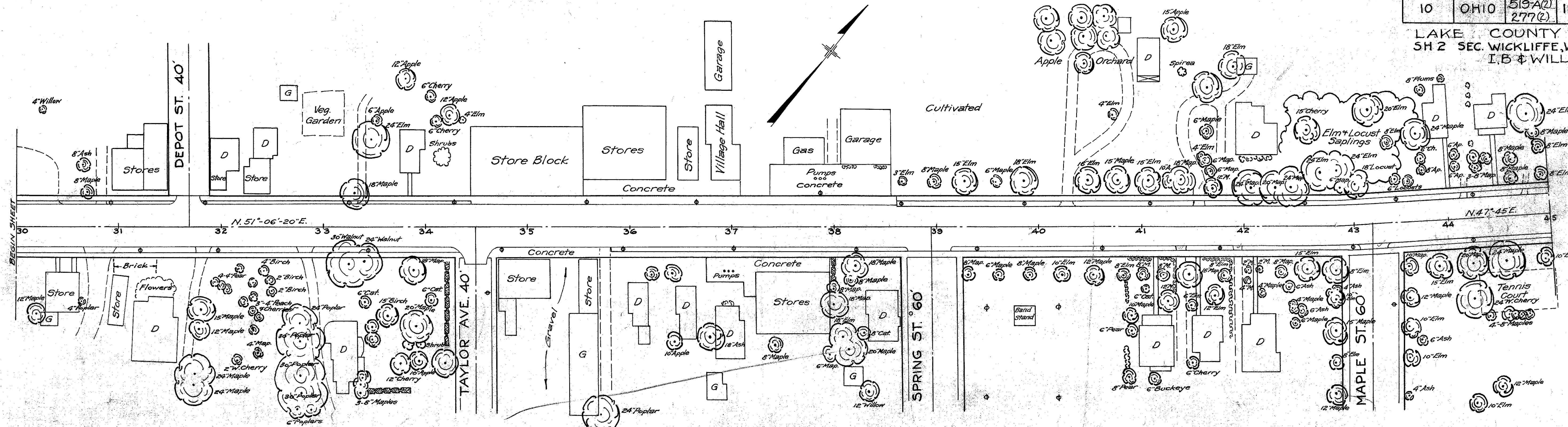


LAKE COUNTY
SH 2 SEC. WICKLIFFE, WILLOWICK,
I.B. & WILLOUGHBY (PT.)



EXCAVATION-TOPSOIL-SEEDING-MULCHING

From Station	To Station	R or L of E	Length in ft.	Width in ft.	L-9 Seeding Sq. Yds.	E-1 Rwy. Exc. Cu. Yds.	L-2 Topsoil Sq. Yds.	L-18 Mulching Sq. Yds.
38+60	60+00	L	2140	4.5	1070		1070	
31+90	34+30	R	240	4.5	120	13	120	120
35+80	36+75	R	95	4.5	48	5	48	48
39+12	60+00	R	2088	4.5	1044		1044	
Totals					2282	18	168	2282
Deduct for side approaches & drives in above stations					361			361
TOTALS FOR SHEET					1921	18	161	1921

QUANTITIES FOR SHEET NO 5 F.A.P. 519-G(2)

Item	Quantity	Unit	Materials & Operations	Condition	Sizes Caliper (Inches) Height (Feet)	Spacing
L-14	8	Each	Acer saccharum (Sugar Maple)		1 1/2 to 1 3/4	as shown
L-14	8	Each	Acer platanoides (Norway Maple)		1 1/2 to 1 3/4	as shown
L-14	8	Each	Celtis occidentalis (Hackberry)		1 1/2 to 1 3/4	as shown
L-9	1921	Sq. Yds.	Seeding			
E-1	17	Cu. Yds.	Roadway excavation (unclassified)			
L-2	161	Sq. Yds.	Topsoil furnished & placed (areas seeded under L-9)			
L-9	346	Lbs.	Commercial fertilizer #1 @ 20 lbs. per 1000 sq. ft.			
L-18	1921	Sq. Yds.	Straw Mulch (including stabilizing)			

