

81-9

G-5

STATE OF OHIO  
DEPARTMENT OF HIGHWAYS

F.A.P. 519-G (2)  
F.A.P. 519-A (2)  
F.A.P. 277 (2)

FED. RD. DIST. NO.	STATE	FED. AID PROJECT	FISCAL YEAR
10	OHIO	519-G(2) 519-A(2) 277(2)	1939

1  
12

LAKE AND COUNTY ROAD  
SH 2 SEC WICKLIFFE, WILLOWICK,  
LAKE I, B & WILLOUGHBY (Pt.)  
ROADSIDE IMPROVEMENT  
S.R.-20. 0.00 ~ 4.50

# CLEVELAND ~ BUFFALO ROAD

## S.H. NO 2 SEC, WICKLIFFE, WILLOWICK, I, B & WILLOUGHBY (Pt.)

# LAKE COUNTY

### WILLOUGHBY TOWNSHIP

NET LENGTH OF PROJECT 23760 LIN. FT. = 4.500 MI.

## ROADSIDE IMPROVEMENT

VILLAGES OF WICKLIFFE, WILLOWICK & WILLOUGHBY

### CONVENTIONAL SIGNS HIGHWAY ENGINEERING FEATURES

STATE LINE	----
COUNTY LINE	----
TOWNSHIP LINE	----
SECTION LINE	----
CENTER LINE	----
PROPERTY LINE	----
CITY OR VILLAGE LINE	----
FENCE LINE	----
STEAM RAILROAD	====
ELECTRIC RAILROAD	----
POLE LINE	○ ○ ○ ○ ○ ○ ○ ○
GUARD RAIL	—●—●—●—●—●—●—●—●—
DRAIN PIPE NEW	—○—○—○—○—○—○—○—○—
DRAIN PIPE OLD	—○—○—○—○—○—○—○—○—
TOP OF SLOPE	-----
TOE OF SLOPE	-----

### CONVENTIONAL SIGNS HIGHWAY LANDSCAPE FEATURES

**EXISTING PLANT GROWTH** (foliage indication at relative scale)

Common (English) names  
Wood, Forest, or Grove

Deciduous tree (Shade type)  
D: inch diameter at breast height (4 1/2) 12' Maple  
S: spread in feet, or 1 1/2 x inch diam.  
Evergreen tree (screen type)  
Flowering tree (small tree or shrub) H: height 12' thorn  
Shrub mass (single or grouped)  
Hedge row  
Clipped hedge

**PROPOSED** (to be planted) CLASSIFICATION based on relative size at maturity  
(Scientific (Latin) names)  
Deciduous tree (shade type) 1-Quercus alba  
Small tree (flowering type)  
Evergreen tree  
Specimen tree (selected large or small)  
Planting group  
Small trees (in groups)  
Large shrubs (in groups)  
Medium Size shrubs (figures in feet indicate spacing)  
Ground Cover (vines) (incut) To Pinus copalina - 5'  
Ground Cover (vines) (on fill) 220 Ampelopsis - 5'  
(First figure indicates quantity, last figure indicates spacing in feet)  
To be transplanted (from to)  
To be cut and removed  
View lines (desirable)  
Undesirable outlooks (bill boards, barns, etc.)  
Other special features as indicated on plan sheets  
Photograph station and number shown thus 2 Photo

**LINE DATA**

Net Length of F.A.P. 519-G (2)	Lin. Ft or Miles
Sta. 0+00 to Sta. 64+00	= 6400 1.212
Net Length of F.A.P. 519-A (2)	
Sta. 64+00 to Sta. 180+50	= 11650 2.207
Net Length of F.A.P. 277 (2)	
Sta. 180+50 to Sta. 237+60	= 5710 1.081
No Additions or Deductions	
Total Length of Project	= 23760 4.500

**INDEX OF SHEETS**

TITLE SHEETS	SHEET 1
TYPICAL SECTIONS	2 8 3
PLAN SHEETS	4 to 11
SUMMARY OF QUANTITIES	12

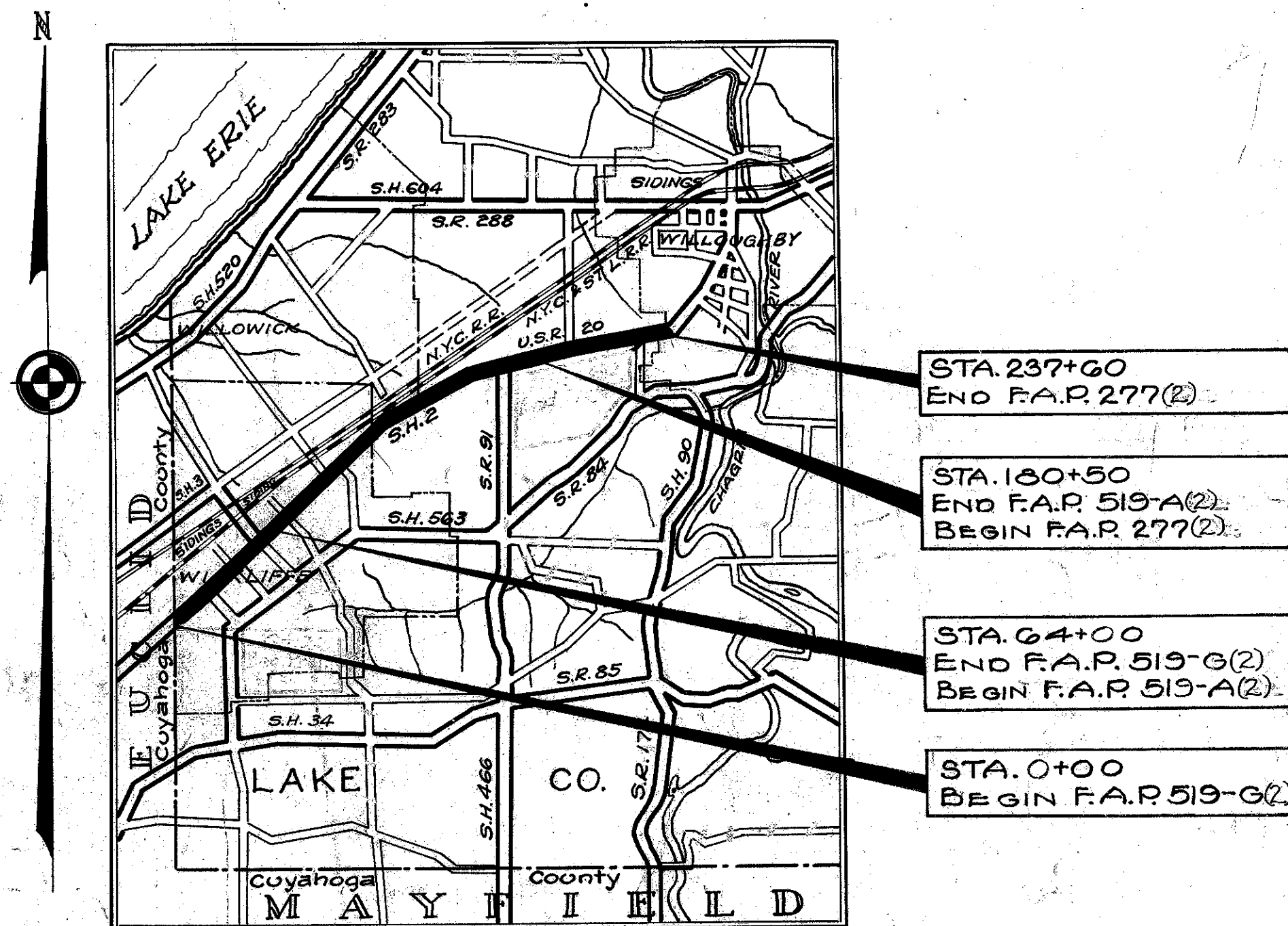
**ABBREVIATIONS FOR EXISTING TREES**

A = Apple	Cat. = Catalpa
E = Elm	Pop. = Poplar
Loc. = Locust	Syc. = Sycamore
M. or Map. = Maple	W. Ch. = W. Cherry
Peach = Peach	

**SUPPLEMENTAL STANDARDS**

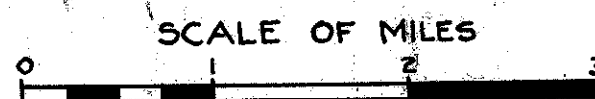
DRAWING NO.	DATE
L-1	2-16-38
L-2	2-16-38

SPECIFICATION CHANGES - NONE  
SUPPLEMENTAL SPECIFICATIONS - NONE



AVERAGE HAUL - 2.7 MILES

### LOCATION PLAN



PORTION TO BE IMPROVED  
STATE HIGHWAYS  
IMPROVED COUNTY ROADS  
UNIMPROVED COUNTY ROADS

### SCALES

PLAN 1" = 50'  
TYPICAL SECTIONS 1" = 4'

The Standard Specifications of The State Of Ohio, Department Of Highways, including changes and Supplemental Specifications listed in the proposal shall govern this improvement.

I hereby approve these plans, and declare that the making of this improvement will not require the closing of this highway to traffic. Local access to properties abutting the improvement shall be provided for and maintained by the Contractor at all times.

The right of way necessary for this improvement will be provided by the State of Ohio.

Approved Howard C. Galt  
Date 2/20/39 Resident District Deputy Director

Approved Fred R. Williams  
Date 2/23/39 Resident Division Deputy Director

Approved \_\_\_\_\_  
Date \_\_\_\_\_ Chief Engineer, Bureau of Maintenance

Approved \_\_\_\_\_  
Date \_\_\_\_\_ Chief Engineer, Bureau of Bridges

Approved J. P. Boyle P.E. 25  
Date 3-7-39 Chief Engineer, Location and Right of Way

Approved H. J. Jones P.E. #1  
Date 3-7-39 First Asst. Director and Chief Engineer

Approved Wm. O. Bright P.E. 3724  
Date 3-7-39 Director of Highways

Recommended for Approval \_\_\_\_\_  
Date \_\_\_\_\_ District Engineer, Bureau of Public Roads

Recommender for Approval \_\_\_\_\_  
Date \_\_\_\_\_ Chief Engineer, Bureau of Public Roads

Approved \_\_\_\_\_  
Date \_\_\_\_\_ Chief of Bureau

CONSTRUCTION BUREAU  
APR 9 1939  
GROUND PHOTOLAB