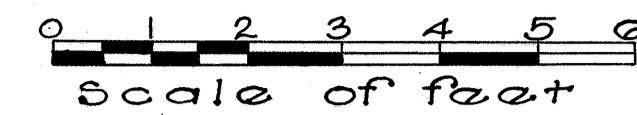


TYPICAL SECTIONS

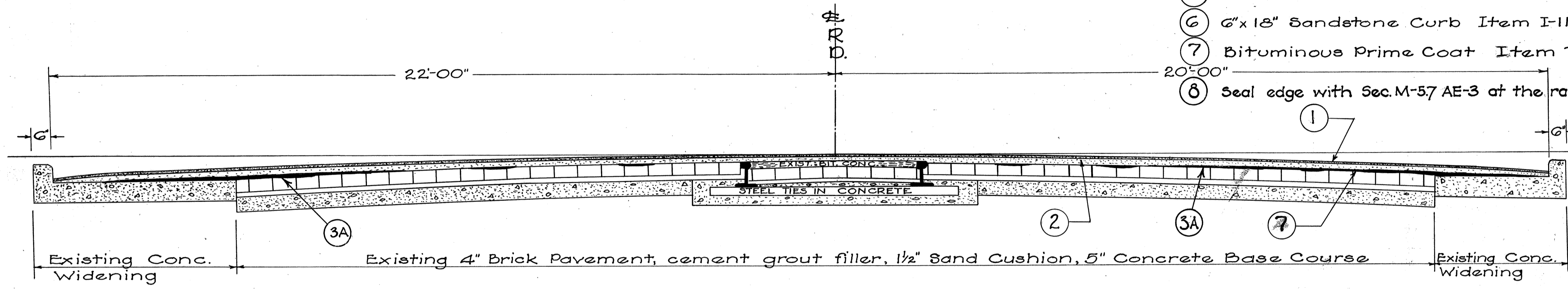


TYPE-T-40

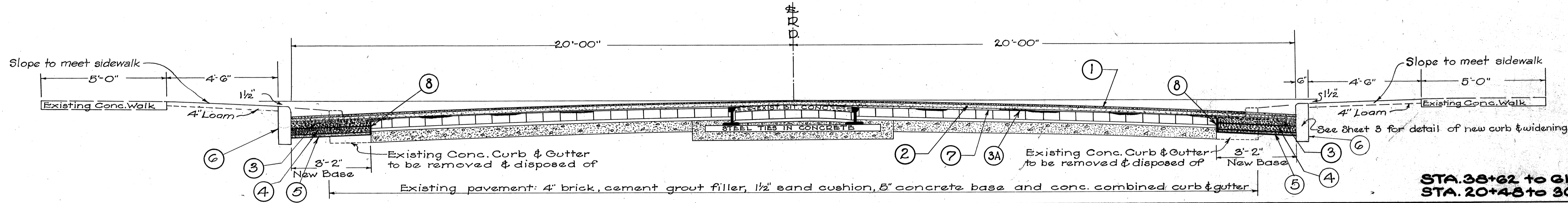
FED. DIST. NO.	STATE	FED. AID. PROJ. NO.	FISCAL YEAR
10	OHIO	513-G 513-A Re. 277 Re.	1937

LAKE COUNTY
S.H. 2 SEC. WICKLIFFE, WILLOWIC
I, B & WILLOUGHBY (Pt.)

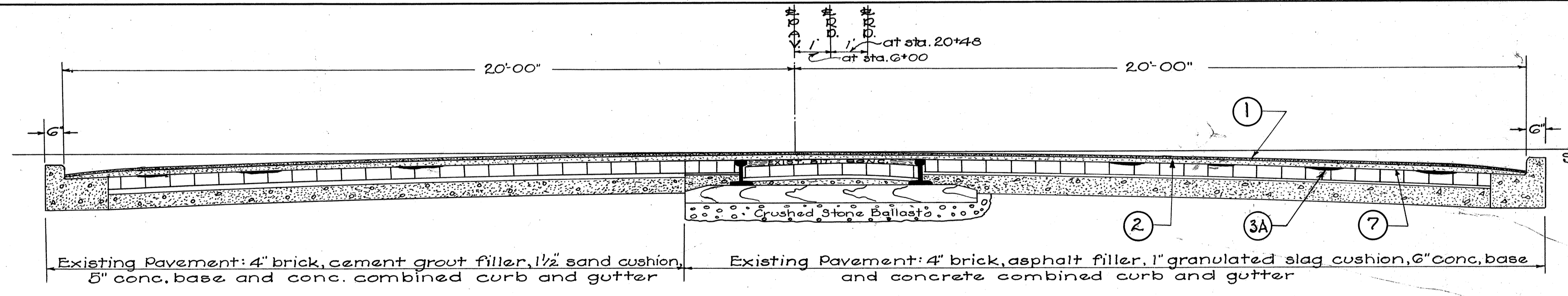
- ③A Hot mixed, hot laid asphaltic concrete leveling course, Item B-50.
- ① 3/4" Rock Asphalt Wearing Course Item T-40
- ② 1" Hot-Mixed, Hot-Laid Asphaltic Concrete Binder Course Item T-50
- ③ 3" Hot-Mixed, Hot-Laid Asphaltic Concrete Leveling Course Item B-50
- ④ 3" Hot-Mixed, Hot-Laid Asphaltic Concrete Base Course Item B-50
- ⑤ 1" Insulation Course Item B-11
- ⑥ 6"x18" Sandstone Curb Item I-11
- ⑦ Bituminous Prime Coat Item T-30 (See note sheet No 3)
- ⑧ Seal edge with Sec. M-57 AE-3 at the rate of .25 gal. per sq. yd. in two applications, Item E-10.



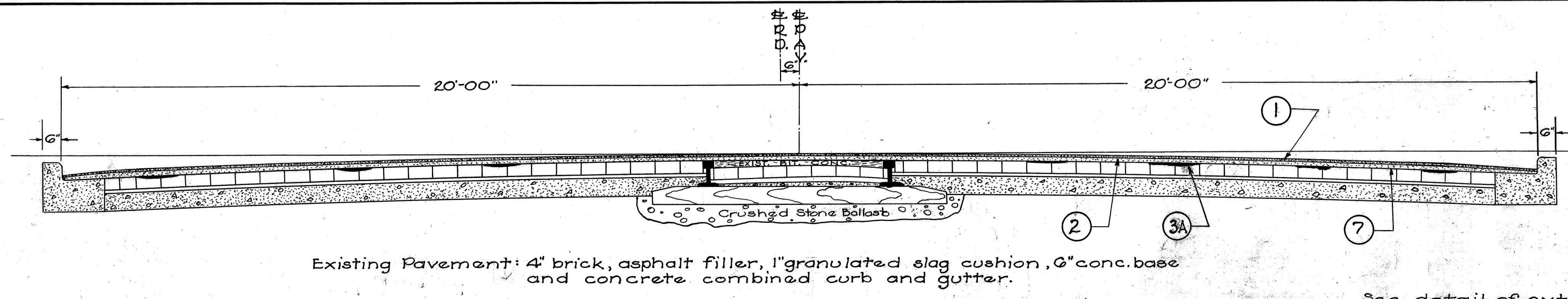
STA. 30+64 to 35+62



STA. 35+62 to 41+05 &
STA. 20+48 to 30+64



STA. 6+00 to 20+48



STA. 0+00 to 6+00
See detail of extra width, From 0+00 to 1+00