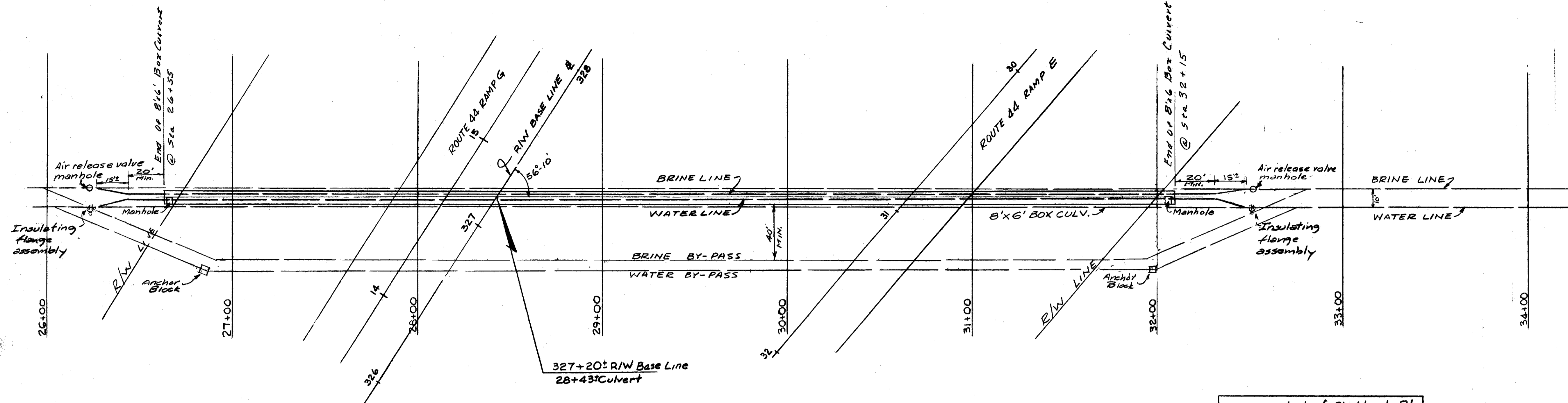
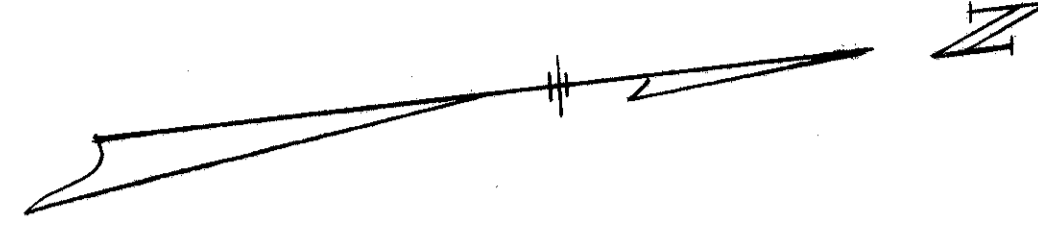
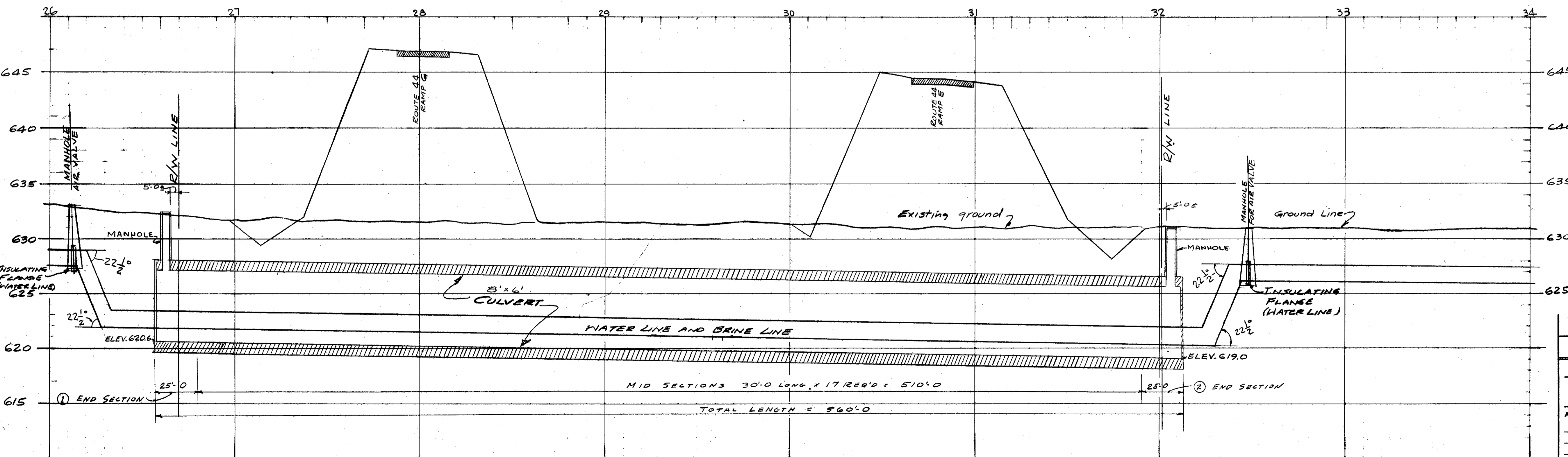


NOTES  
 LAK. 2-13.72  
 LAK. 44-5.88  
 LAKE COUNTY

2  
8



B.M. 30' North of Blackbrook Rd  
 on E of Existing Brine and Water  
 Line  
 Elev. 634.74



PW 114-12  
 PW 131-5  
 PW 114-11

REFERENCE DRAWINGS  
 ASSOCIATE ENGINEERS  
 FULLERTON AND KERR  
 PAINESVILLE, OHIO

APPROVALS:  
 V.H.K. DATE 4/19/60  
 DATE  
 CONTRACT NO.

DWG.	B.M.	APPROV. NO.	REVISION DESCRIPTION	DATE	BY	CHK'D.	APP'D.	DWG.	B.M.	APPROV. NO.	REVISION DESCRIPTION	DATE	BY	CHK'D.	APP'D.
A			ORIGINAL ISSUE												

APPROVED FOR CONST. *J.B. Bassett* DATE 5/4/60  
 DRAWN: E.I. DATE  
 CHECKED: W.S.P. DATE 4-6-60  
 SCALE: HOR. 1"=30' VERT. 1"=5' B.M. —

OTHER APPROVALS  
 PLANT PAINESVILLE DEPT. W  
 BRINE AND WATER LINES TO  
 JACKSON ST. BRINE FIELD  
 S.R. 44 CROSSING

DIAMOND ALKALI COMPANY  
 CENTRAL ENGINEERING DEPARTMENT  
 PW 135-13-1 A