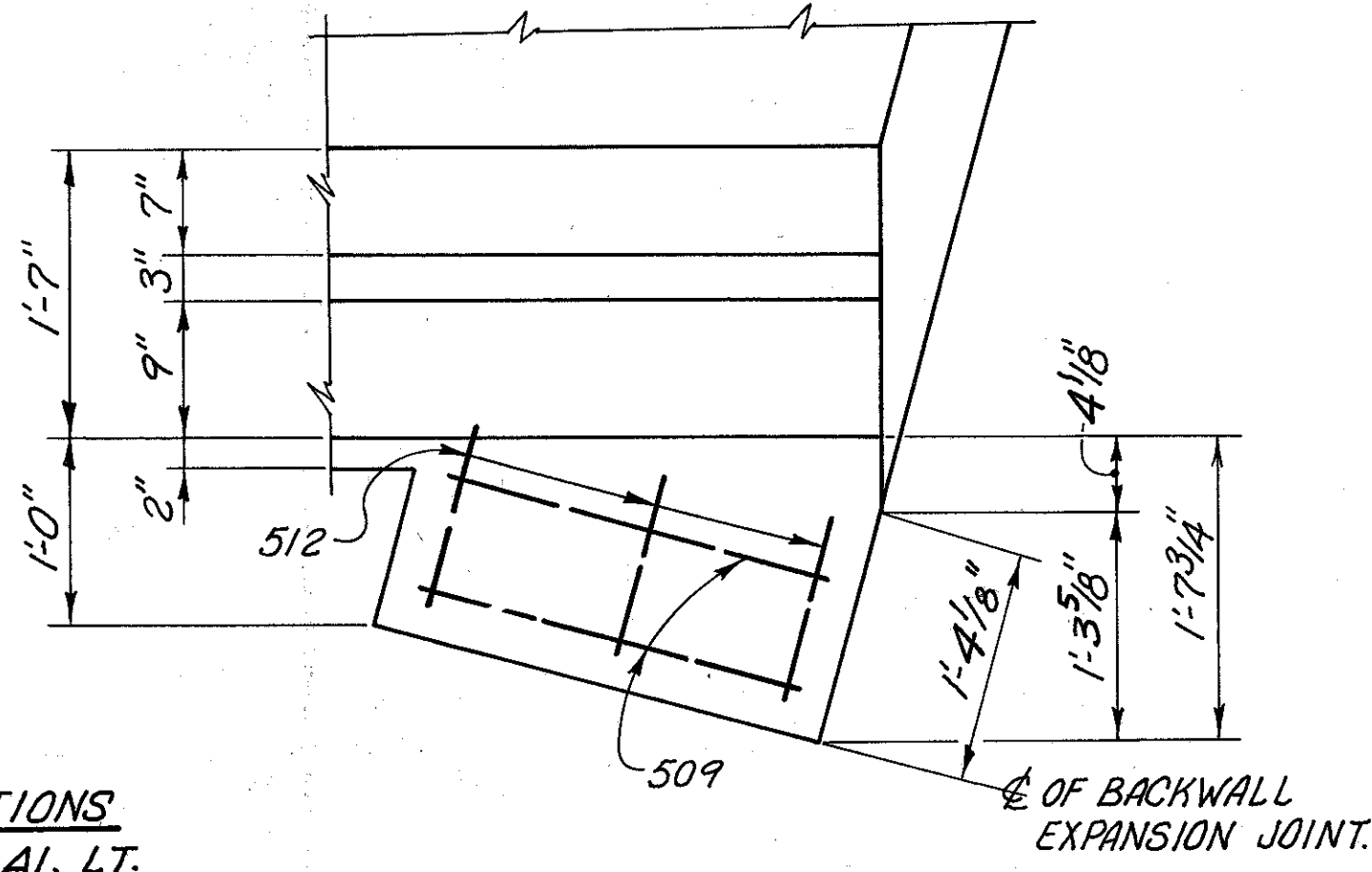
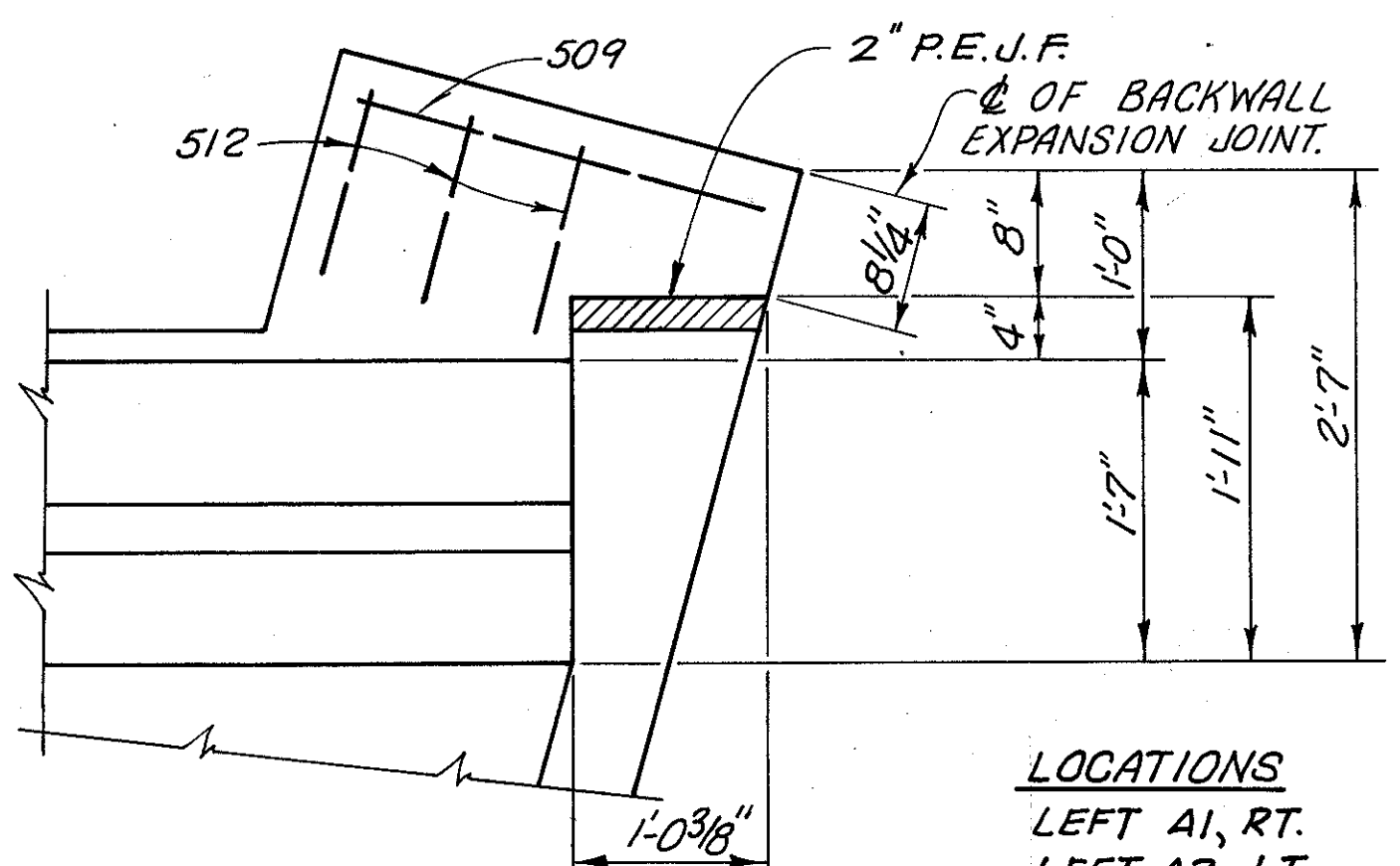


SLAB PLAN, LEFT STRUCTURE SHOWN, RIGHT STRUCTURE SIMILAR



DETAIL 'A'



DETAIL 'B'

MINIMUM LAP LENGTHS	
# 4 BAR	= 23"
# 5 BAR	= 39"
# 6 BAR	= 48"

* UNLESS NOTED OTHERWISE

TYPICAL PANEL REINFORCING	
6'-4" PANELS	5-503, 5-504 & 5-505 @ 18" SPACING
14'-0" & 14'-0 7/8" PANELS	10-503, 10-504 & 10-505 @ 18" SPACING

- NOTES**
- FOR ADDITIONAL NOTES, REFER TO SHEET 18/24.
 - FOR DECK SCREED ELEVATIONS, REFER TO SHEET 19/24.
 - FOR ADDITIONAL DETAILS, REFER TO SHEET 21/24.
 - BAR MARKS FOR ALL SUPERSTRUCTURE REINFORCING SHALL BE PREFIXED WITH THE DESIGNATION 'S'.
 - FOR TRANSVERSE SECTION, REFER TO SHEET 18/24.

LOCATIONS
 LEFT A1, LT.
 LEFT A2, RT.
 RIGHT A1, LT.
 RIGHT A2, RT.

LOCATIONS
 LEFT A1, RT.
 LEFT A2, LT.
 RIGHT A1, RT.
 RIGHT A2, LT.

adache-ciumi-lynn
 associates
 CONSULTING ENGINEERS
 DATE 4/94
 REVIEWED AJM
 DRAWN BM
 DESIGNED LJC
 CHECKED AP/ML
 SLAB PLAN
 BRIDGE NUMBER LAK-2-0955 L/R
 OVER STATE ROUTE 615
 LAK-2-9.46
 20/24
 67
 71