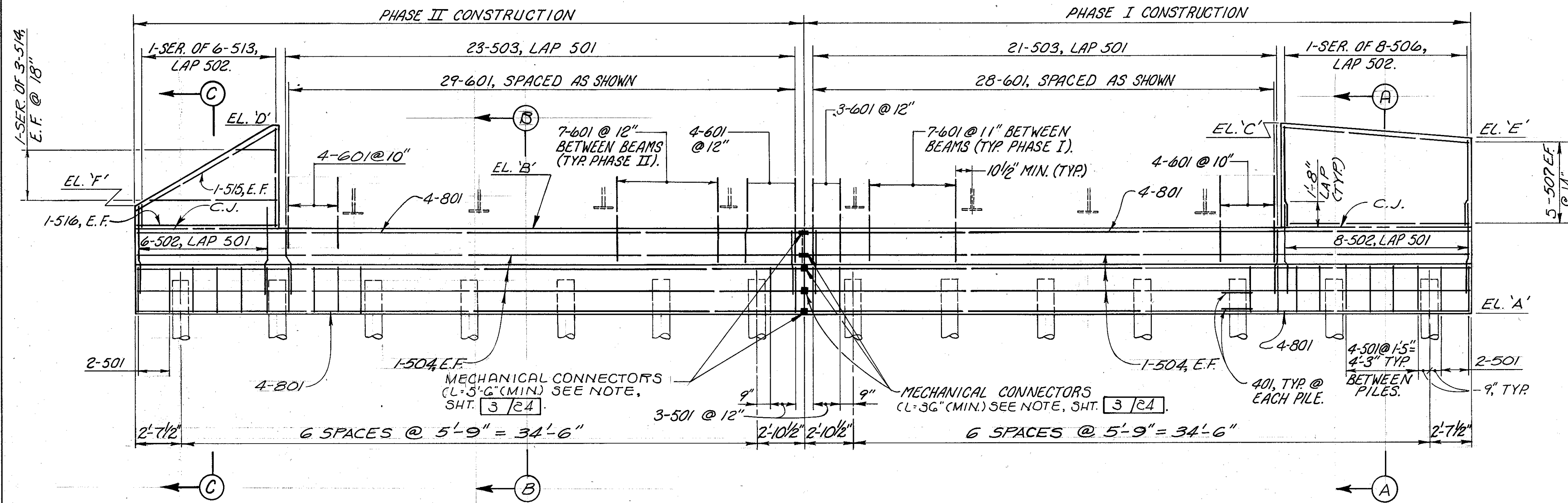


**PLAN**

(ABUTMENT NO. 2, LEFT SHOWN)  
 (ABUTMENT NO. 1, RIGHT SIMILAR)  
 W.P. = WORK POINT: ABUTMENT NO. 2 LT. STA. 403+63.69, 42.00' LT.  
 ABUTMENT NO. 1 RT. STA. 401+65.18, 42.00' RT.

**NOTES**  
 FOR ABUTMENT NOTES SEE SHEET 10/24



**ELEVATION**

ELEVATION	RIGHT ABUTMENT NO. 1	LEFT ABUTMENT NO. 2
A	644.00	643.50
B	649.25	648.75
C	655.30	654.78
D	655.34	654.74
E	654.50	654.00
F	650.50	650.00

adache-ciuni-lynn  
 associates  
 CONSULTING ENGINEERS  
 DATE 4/94  
 REVIEWED AJM  
 STRUCTURE FILE NUMBER  
 DRAWN HBM  
 REVISION  
 DESIGNED HZL  
 CHECKED HZL/MJL  
**ABUTMENT NO. 2, LT. & ABUTMENT NO. 1, RT.**  
 BRIDGE NUMBER LAK-2-0955 L/R  
 OVER STATE ROUTE 615  
**LAK-2-9.46**  
 11/24  
 58  
 71