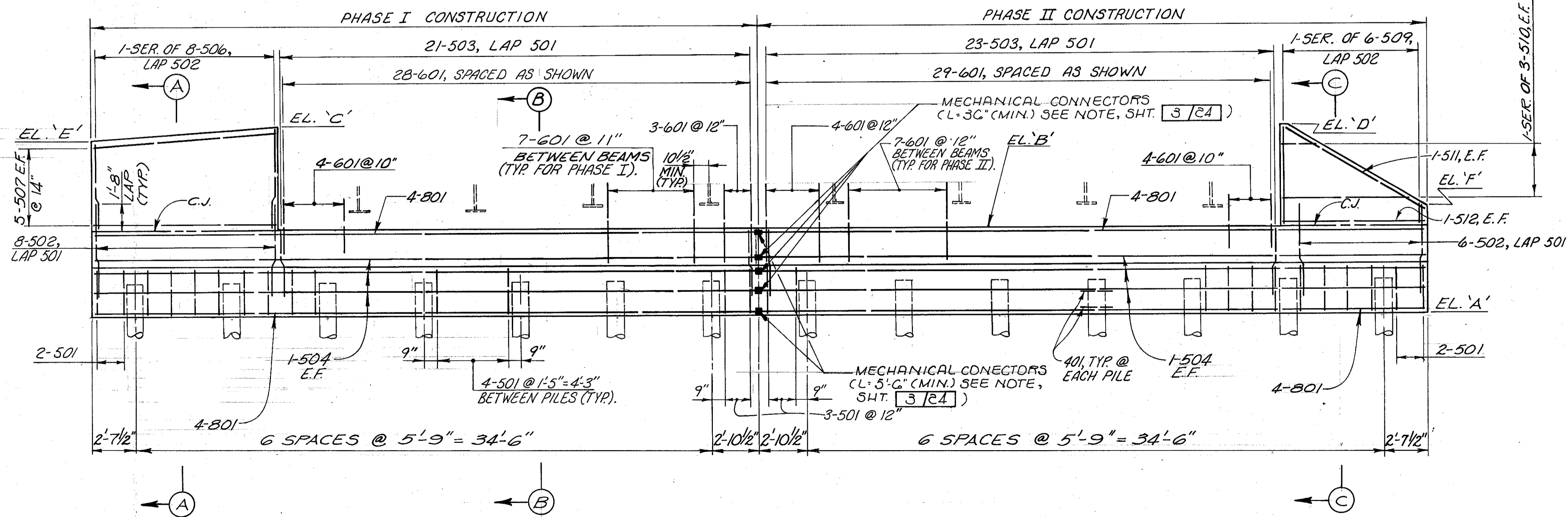


**PLAN**

(ABUTMENT NO. 1, LEFT SHOWN)  
 (ABUTMENT NO. 2, RIGHT SIMILAR)  
 W.P. = WORK POINT: ABUTMENT NO. 1 LT. STA. 401+87.69, 42.00' LT.  
 ABUTMENT NO. 2 RT. STA. 403+46.18, 42.00' RT.

**NOTES**  
 BAR MARKS FOR ALL ABUTMENT NO. 1 AND ABUTMENT NO. 2 REINFORCING SHALL BE PREFIXED WITH THE DESIGNATION '1A' & '2A', RESPECTIVELY.  
 FOR DETAILS NOT SHOWN, SEE STANDARD DRAWING ICD-1-82, SHEETS 1, 2, & 5 OF 5 DATED 8/11/84.  
 FOR BEAM SPACING SEE FRAMING PLAN ON SHEET 13/24.  
 FOR SECTIONS A-A, B-B, & C-C SEE SHEET 12/24.  
 MINIMUM BAR LAP SHALL BE AS FOLLOWS UNLESS NOTED OTHERWISE.  
 NO. 5 = 3'-0"  
 NO. 8 = 5'-6"  
 POROUS BACKFILL WITH FILTER FABRIC, 2 FEET THICK SHALL EXTEND UP TO THE PLANE OF THE SUBGRADE, TO ONE FOOT BELOW THE EMBANKMENT SURFACE, AND LATERALLY TO THE ENDS OF THE WINGWALLS. FABRIC SHALL BE TURNED 90° UP WALL AT BOTTOM OF POROUS BACKFILL.



**TABLE OF ELEVATIONS**

ELEVATION	RIGHT ABUTMENT NO. 2	LEFT ABUTMENT NO. 1
A	643.50	644.00
B	648.75	649.25
C	654.83	655.31
D	654.98	655.38
E	654.00	654.50
F	650.00	650.50

**ELEVATION**