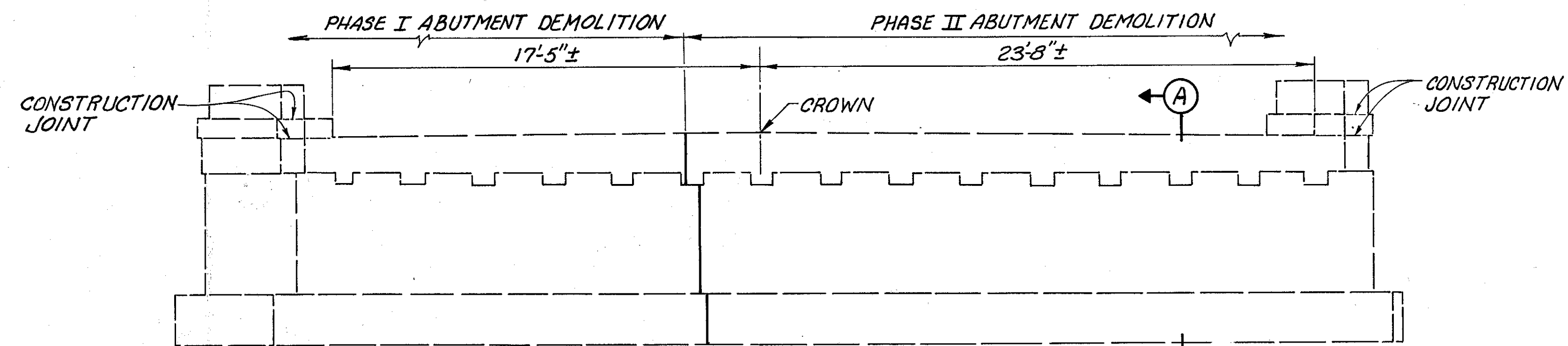
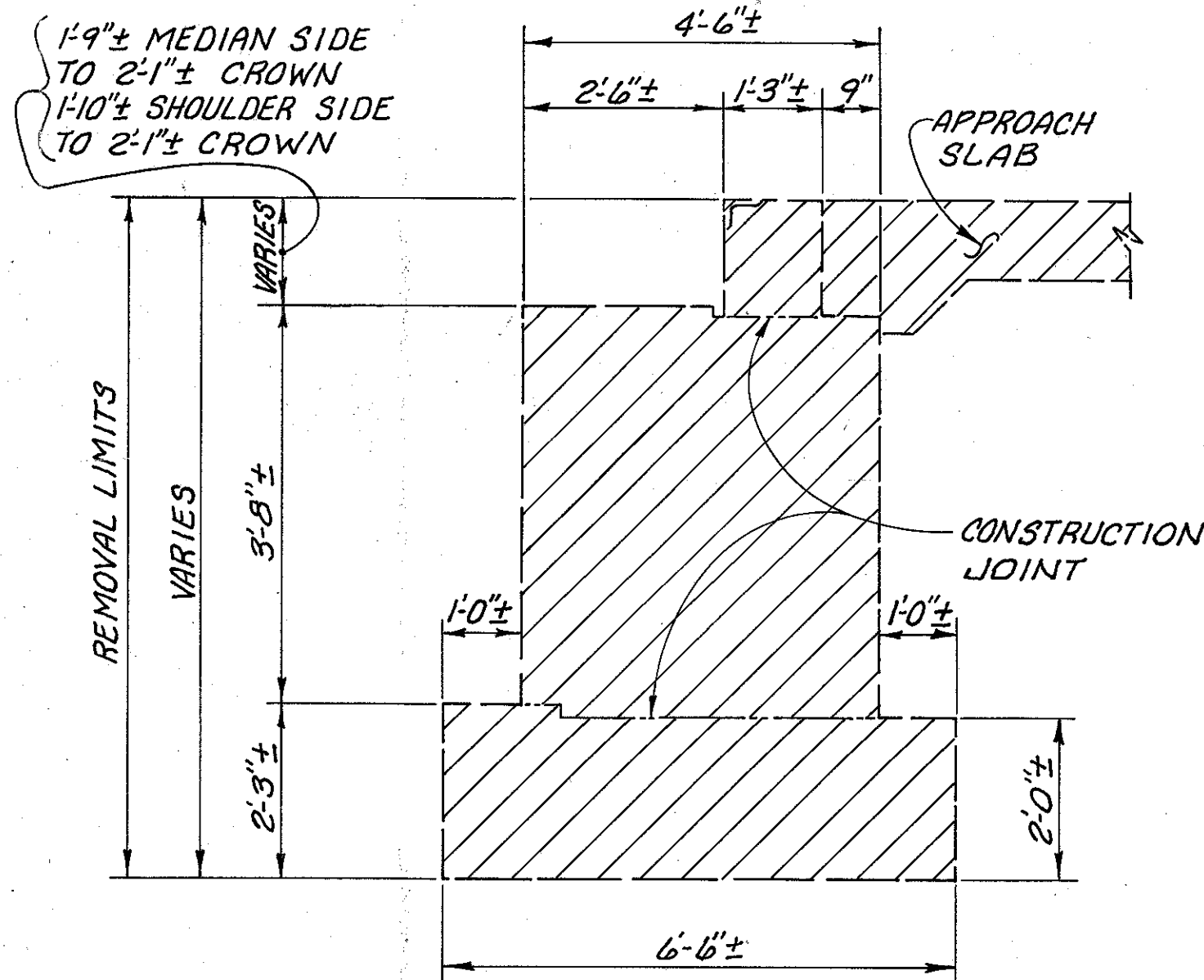


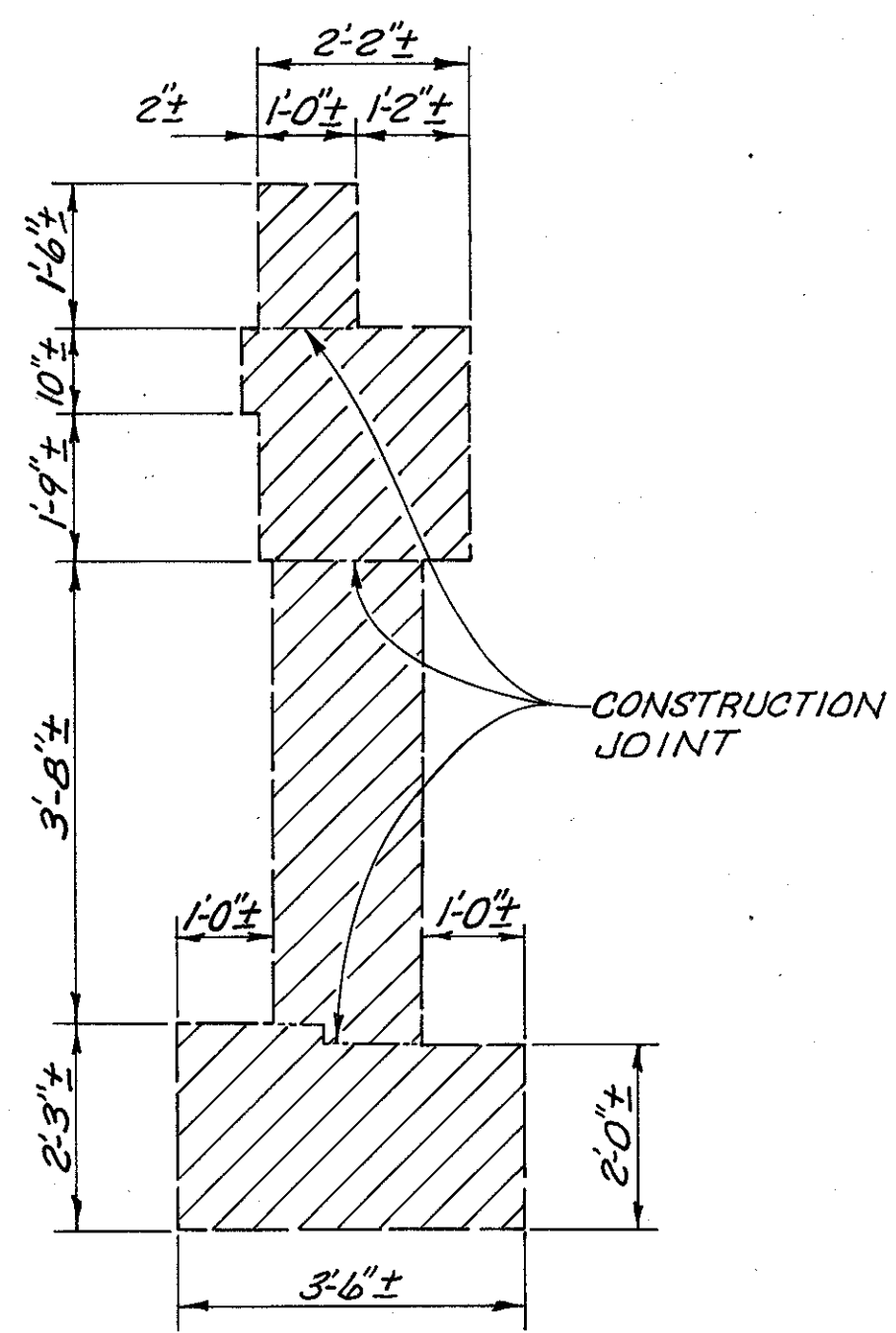
EXISTING ABUTMENT PLAN
(ABUTMENTS 2 & 3 SHOWN, ABUTMENTS 1 & 4 SIMILAR BUT OPPOSITE HAND)



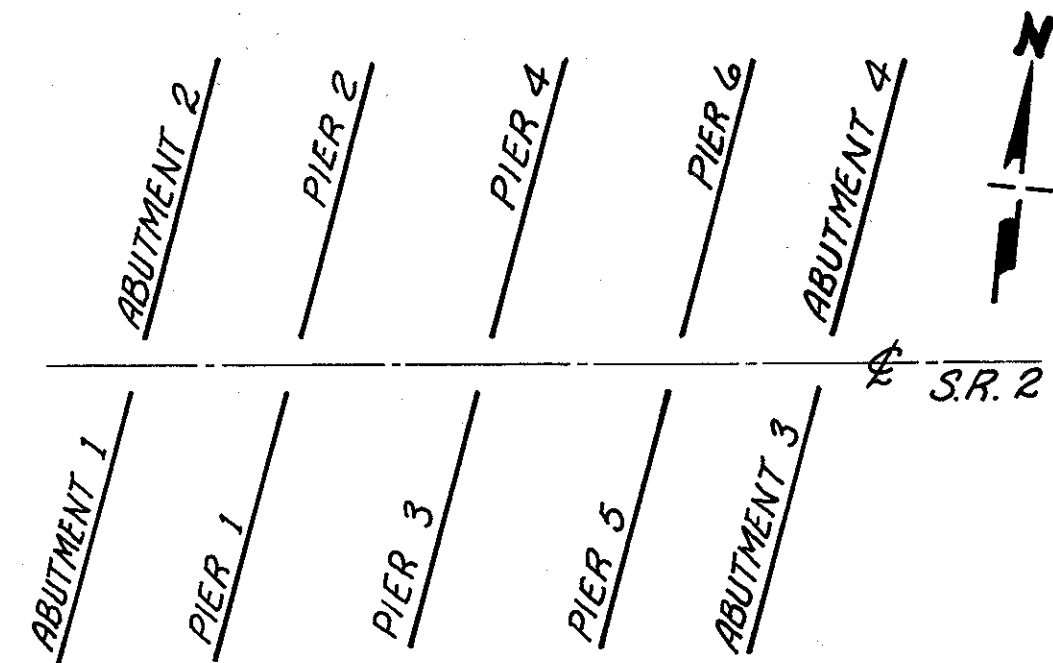
EXISTING ABUTMENT ELEVATION
(ABUTMENTS 2 & 3 SHOWN, ABUTMENTS 1 & 4 SIMILAR BUT OPPOSITE HAND)



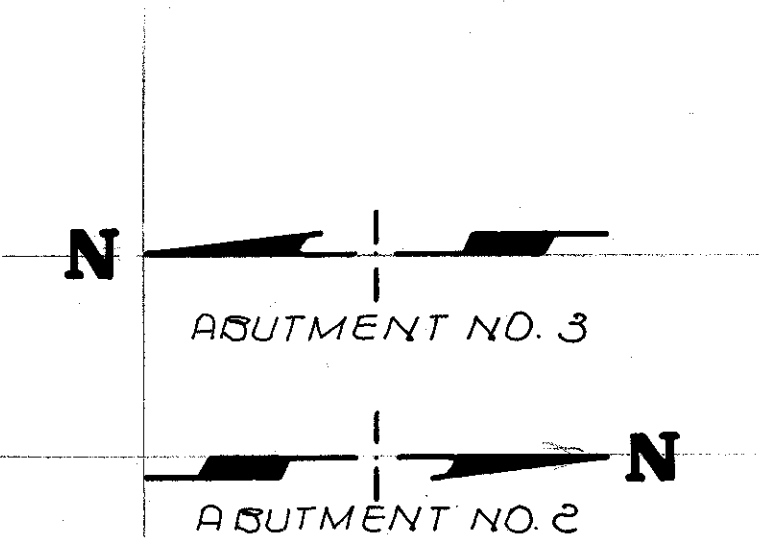
SECTION A-A
(THROUGH ABUTMENT)



SECTION B-B
(THROUGH WINGWALL)



EXISTING SUBSTRUCTURE UNITS
LOCATION PLAN



NOTES

REFER TO SHEET 5/24 FOR A DESCRIPTION OF THE PROPOSED SEQUENCE OF OPERATIONS AND DEMOLITION NOTES.

DETAILS & DIMENSIONS ARE SHOWN FOR ABUTMENTS 2 & 3. ABUTMENTS 1 & 4 ARE SIMILAR, BUT OPPOSITE HAND.

DETAILS & DIMENSIONS SHOWN ARE TYPICAL FOR ALL ABUTMENTS, UNLESS NOTED OTHERWISE.

HATCHED AREAS INDICATE PORTIONS OF EXISTING STRUCTURES TO BE REMOVED. PLAN & ELEVATION VIEWS ARE NOT HATCHED FOR CLARITY.

REFER TO SHEETS 6/24 & 7/24 FOR DETAILS OF PHASED DECK SLAB DEMOLITION.

REFER TO SHEETS 10/24 THROUGH 12/24 FOR DETAILS OF PHASED ABUTMENT CONSTRUCTION.

REFER TO SHEETS 15/24 & 18/24 FOR DETAILS OF PHASED FRAMING CONSTRUCTION.

REFER TO SHEETS 20/24 & 21/24 FOR DETAILS OF PHASED DECK SLAB CONSTRUCTION.

IT IS THE INTENTION OF THESE PLANS THAT ALL EXISTING ABUTMENTS (1 THROUGH 4) ARE TO BE COMPLETELY REMOVED.

DATE	4/94
REVIEWED	AJM
STRUCTURE FILE NUMBER	
DRAWN	BMR
CHECKED	LDL
DESIGNED	NR/MIL