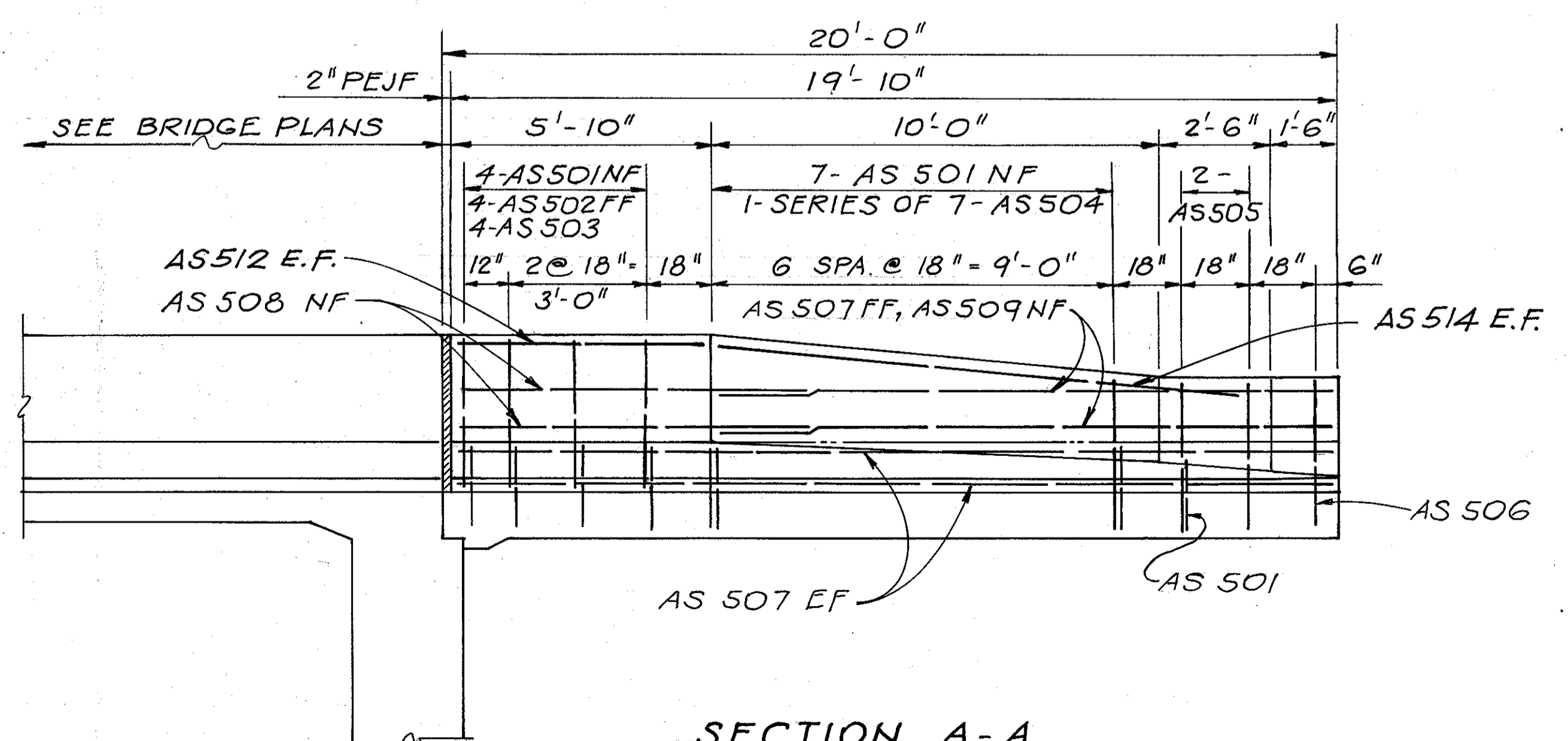


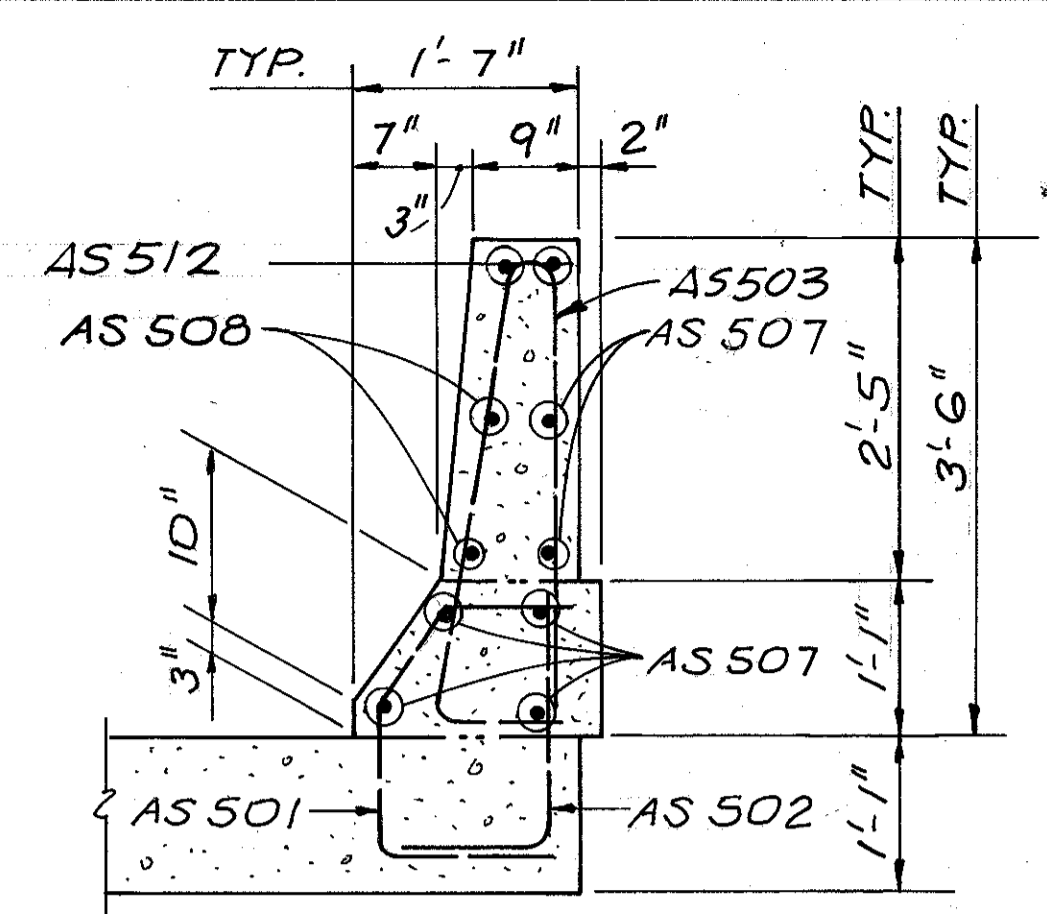
**PARTIAL PLAN** (WESTBOUND SHOWN, EASTBOUND SIMILAR)



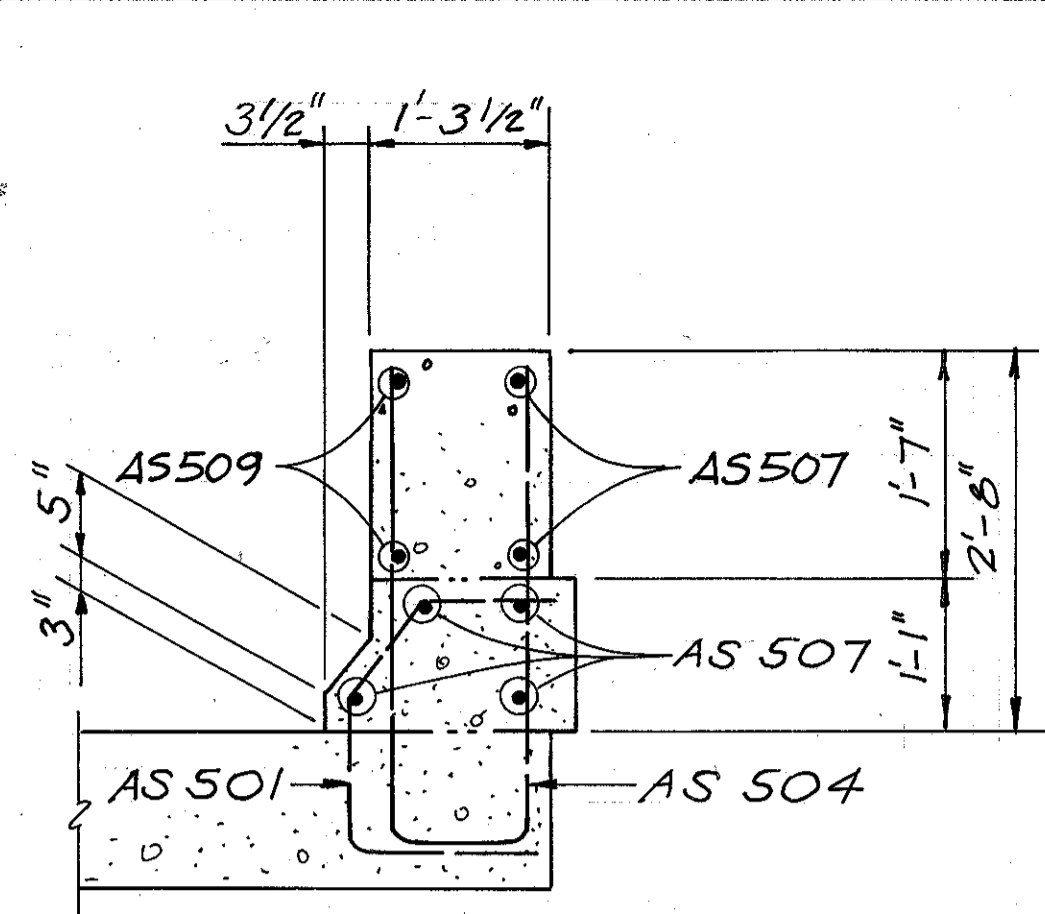
**SECTION A-A**

SEE SECTION F-F & G-G FOR DETAILS OF APPROACH SLAB REINFORCING

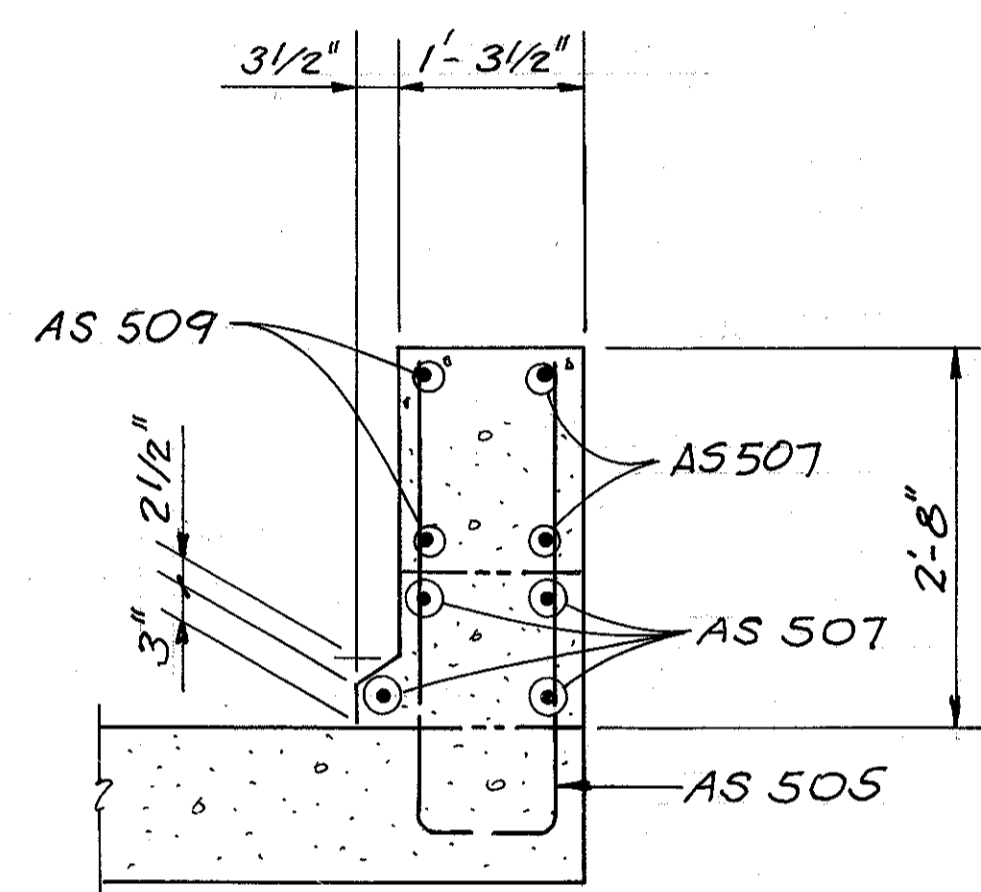
**NOTE:**  
ITEM 304 AGGREGATE BASE, PER TYPICAL SECTION ON SHT. N<sup>o</sup> 4, NOT DEPICTED.



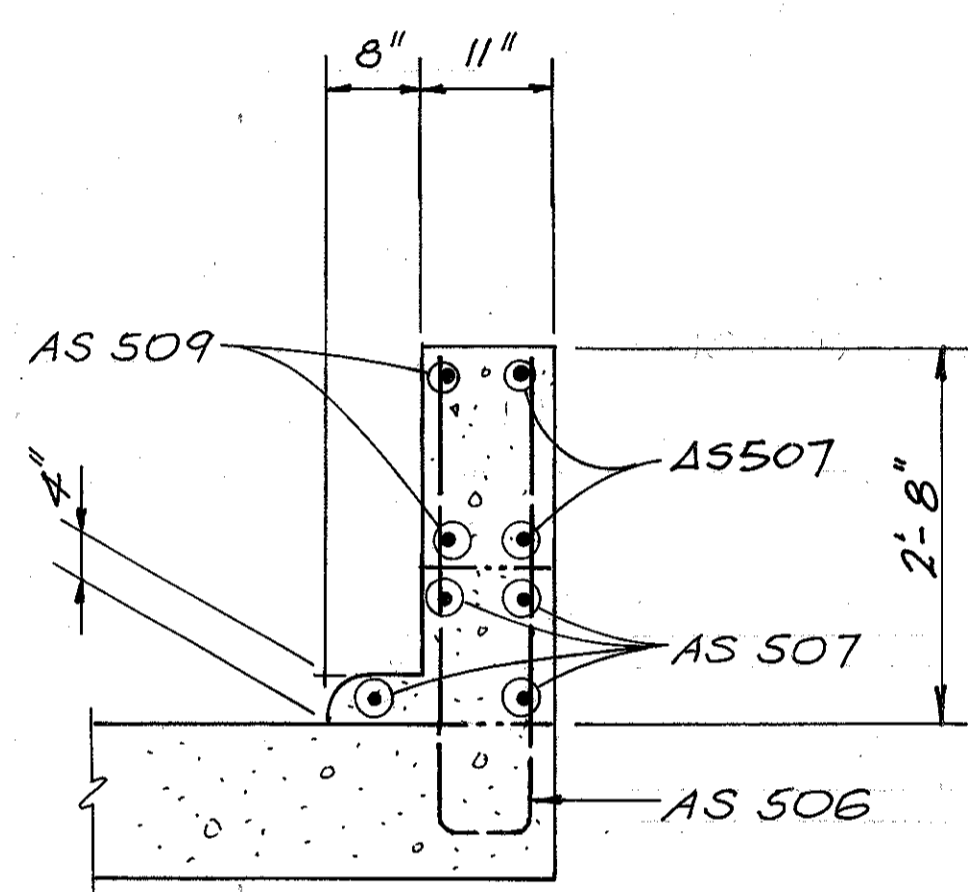
**SECTION B-B**



**SECTION C-C**



**SECTION D-D**



**SECTION E-E**

1) REFER TO STANDARD DRAWING AS-1-81 FOR ADDITIONAL INFORMATION AND DETAILS.

REFER TO SHEET (57/71) FOR SECTION E-E, G-G AND REINFORCING SCHEDULE.

DETAILS OF THE TYPE A PRESSURE RELIEF JOINT AS PER PLAN LOCATED AT THE ENDS OF THE APPROACH SLAB HAVE BEEN OMITTED FROM THE PLAN VIEW AND SECTION A-A FOR CLARITY. REFER TO SECTION G-G ON SHEET (57/71) FOR DETAILS.

**MECHANICAL CONNECTORS:** AN APPROVED TYPE OF MECHANICAL CONNECTOR FOR REINFORCING BARS SHALL BE PROVIDED. INSTALLATION OF CONNECTORS SHALL CONFORM WITH MANUFACTURER'S RECOMMENDED PROCEDURES. IF A DOWEL BAR SPLICE TYPE OF CONNECTOR IS FURNISHED, THE MINIMUM DOWEL BAR LENGTH TO BE FURNISHED WITH THE CONNECTOR SHALL BE AS GIVEN BY THE DIMENSION "L" SHOWN ON SHEET N<sup>o</sup> 39.

CONNECTORS AND DOWEL BARS USED WITH EPOXY COATED BARS SHALL BE EPOXY COATED. COATING FOR BOTH CONNECTORS AND BARS SHALL CONFORM TO THE SAME SPECIFICATIONS. COATINGS WHICH HAVE BEEN DAMAGED OR WHICH OTHERWISE DO NOT MEET SPECIFICATIONS WITH RESPECT TO COLOR, CONTINUITY, AND UNIFORMITY MAY BE REPAIRED AS DIRECTED BY THE ENGINEER OR THEY SHALL BE REPLACED WITH MATERIAL WHICH MEETS THE SPECIFICATIONS.

CONNECTORS AND DOWEL BARS SHALL CONFORM WITH ITEM 309 AND BE INCLUDED IN THE BID PRICE PER SQUARE YARD FOR ITEM G11 - APPROACH SLAB, AS PER PLAN.

APPROACH SLAB ELEVATIONS		
<b>LEFT REAR</b>		
STA. 401+63.44	30' L & SR 2	ELEVATION 654.45
STA. 401+83.44	30' L & SR 2	654.48
<b>RIGHT REAR</b>		
STA. 401+47.35	30' R & SR 2	654.42
STA. 401+67.35	30' R & SR 2	654.46
<b>LEFT FORWARD</b>		
STA. 403+66.51	30' L & SR 2	653.91
STA. 403+86.51	30' L & SR 2	653.76
<b>RIGHT FORWARD</b>		
STA. 403+50.42	30' R & SR 2	654.02
STA. 403+70.42	30' R & SR 2	653.89

APPROACH SLAB DETAILS

LAK-2-9.46