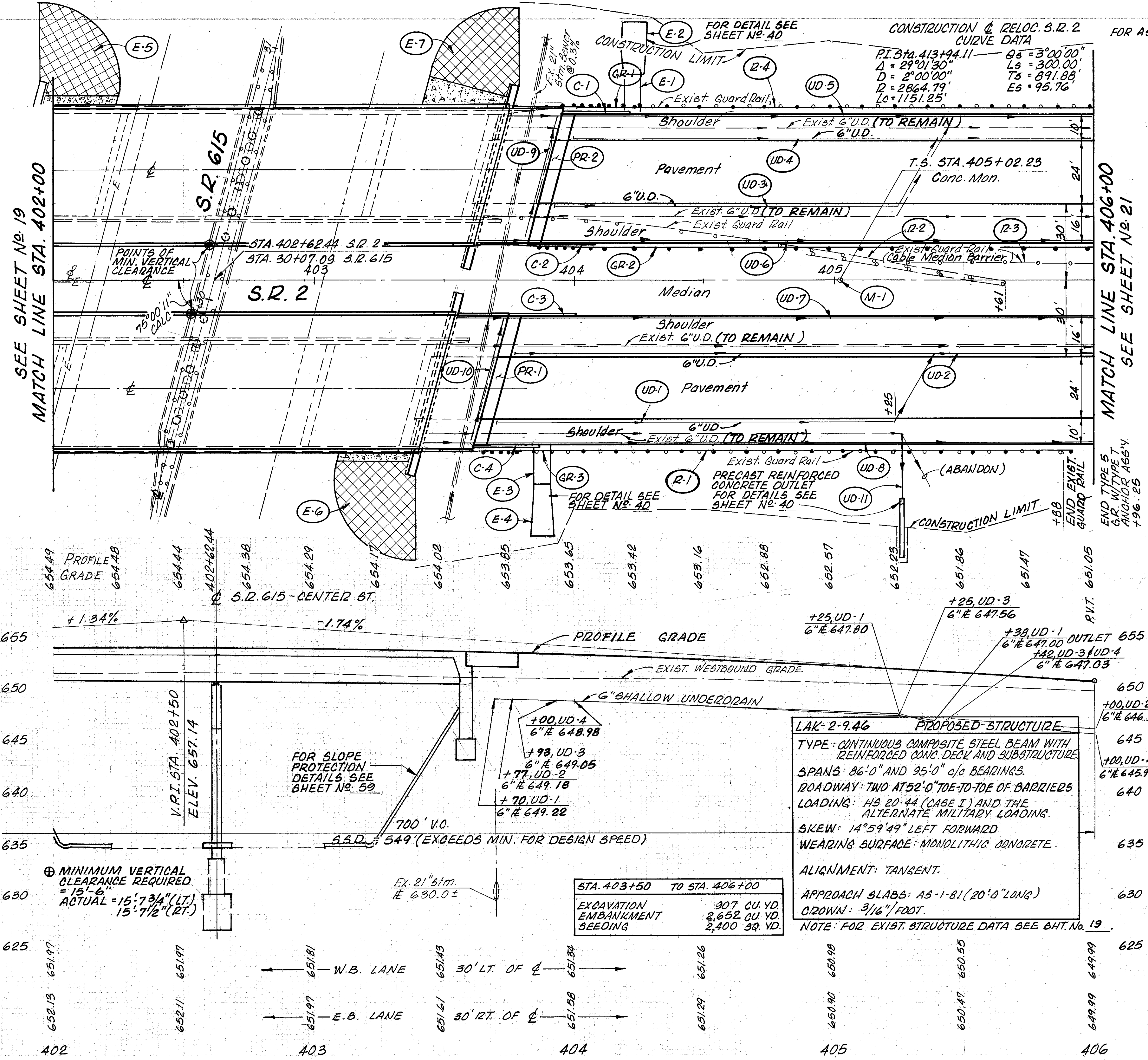


T.B.M.: STA. 405+02.23 (C)
CONCRETE MONUMENT
ELEV. 648.93

SEE SHEET No. 19
MATCH LINE STA. 402+00

MATCH LINE STA. 406+00
SEE SHEET No. 21



CONSTRUCTION & RELOC. S.R. 2
CURVE DATA
P.I. STA. 413+94.11 $\theta_s = 3^{\circ}00'00''$
 $\Delta = 29^{\circ}01'30''$ $L_s = 300.00'$
 $D = 2^{\circ}00'00''$ $T_s = 891.88'$
 $L = 2864.79'$ $E_s = 95.76'$
 $L_c = 1151.25'$

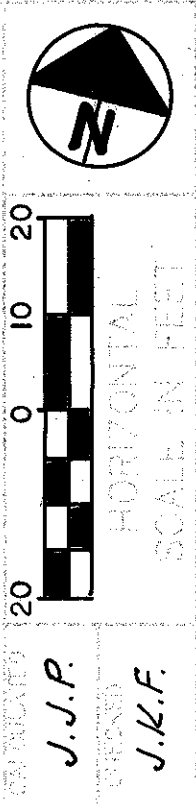
FOR ASPHALT PAVING UNDER GUARD RAIL SEE SHEET No. 7 & 6

* SEE SHEET No. 23 FOR MORE ESTIMATED QUANTITIES.

REF. NO.	STATION TO STATION	SIDE	QUANTITIES	ESTIMATED QUANTITIES *
R-1	403+88 TO 405+88	RT.	202	603
R-2	403+61 TO 405+61	LT.	202	603
R-3	405+22 TO 406+00	LT.	202	603
R-4	403+82 TO 406+00	LT.	202	603
UD-1	403+70 TO 405+88	RT.	202	603
UD-2	403+77 TO 406+00	RT.	202	603
UD-3	403+93 TO 405+44	LT.	202	603
UD-4	404+00 TO 406+00	LT.	202	603
UD-5	403+76 TO 406+00	LT.	202	603
UD-6	403+62 TO 406+00	LT.	202	603
UD-7	403+55 TO 406+00	LT.	202	603
UD-8	403+41 TO 406+00	LT.	202	603
GR-1	403+94.07 TO 406+00	LT.	202	603
GR-2	403+81.12 TO 406+00	LT.	202	603
GR-3	403+58.79 TO 406+00	LT.	202	603
PR-1	403+64 TO 403+78	RT.	202	603
PR-2	403+85 TO 403+98	LT.	202	603
TOTALS CARRIED TO GENERAL SUMMARY				

LAK-2-9.46 PROPOSED STRUCTURE
TYPE: CONTINUOUS COMPOSITE STEEL BEAM WITH REINFORCED CONC. DECK AND SUBSTRUCTURE
SPANS: 86'-0" AND 95'-0" c/c BEARINGS.
ROADWAY: TWO AT 52'-0" TDE-TO-TDE OF BARRIERS
LOADING: HS 20-44 (CASE I) AND THE ALTERNATE MILITARY LOADING.
SKEW: 14°59'49" LEFT FORWARD.
WEARING SURFACE: MONOLITHIC CONCRETE.
ALIGNMENT: TANGENT.
APPROACH SLABS: A5-1-81 (20'-0" LONG)
CROWN: 3/16" / FOOT.
NOTE: FOR EXIST. STRUCTURE DATA SEE SHT. No. 19

STA. 403+50 TO STA. 406+00
EXCAVATION 307 CU. YD.
EMBANKMENT 2,652 CU. YD.
SEEDING 2,400 SQ. YD.



PLAN AND PROFILE
STA. 402+00 TO STA. 406+00

LAK-2-9.46