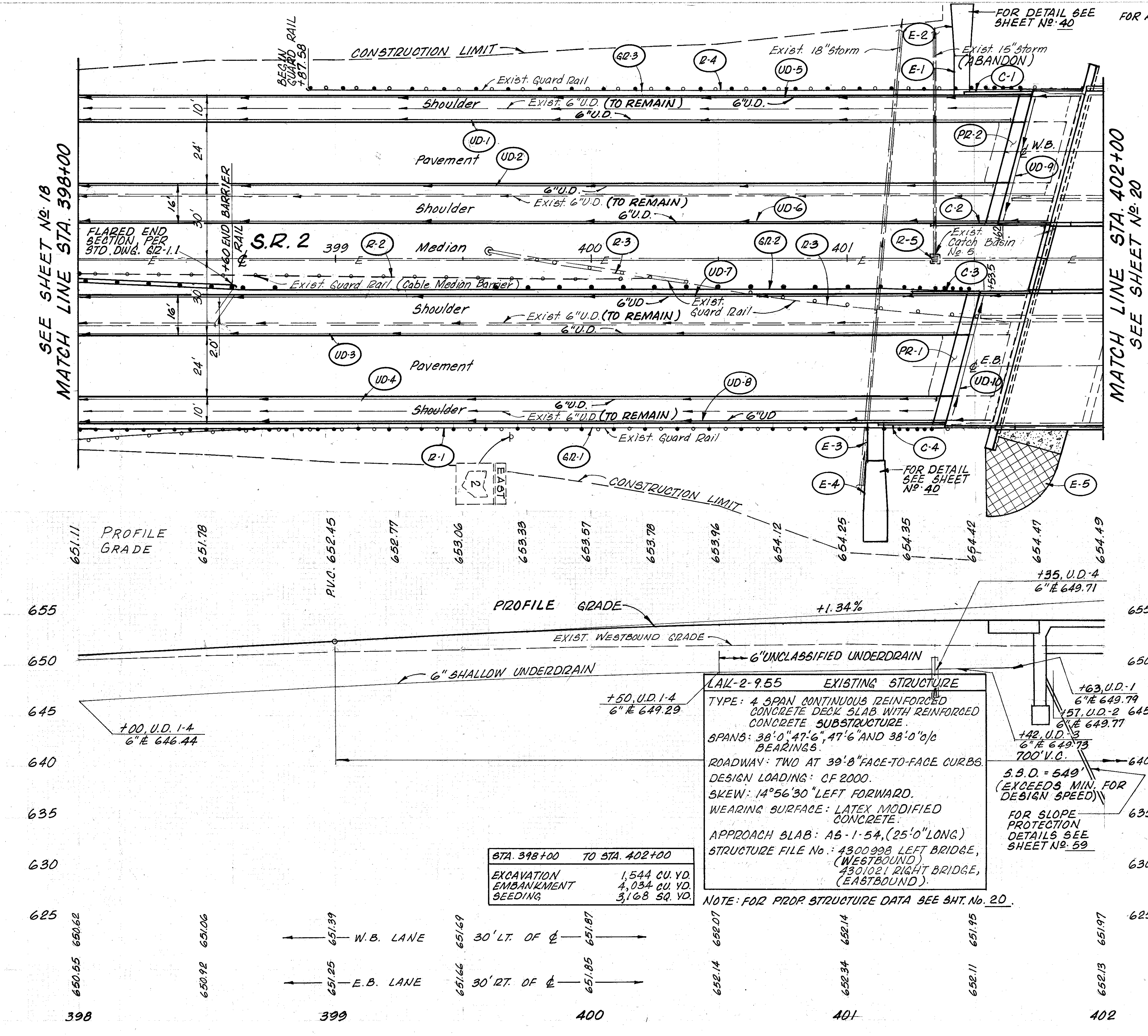


SEE SHEET No. 18  
MATCH LINE STA. 398+00

MATCH LINE STA. 402+00  
SEE SHEET No. 20



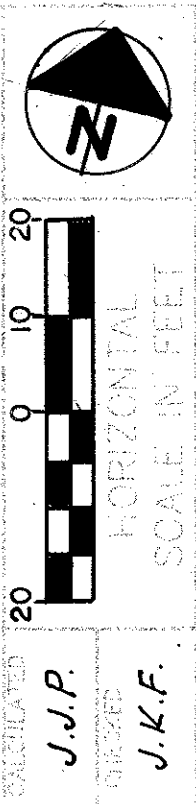
STA. 398+00 TO STA. 402+00	
EXCAVATION	1,544 CU. YD.
EMBANKMENT	4,034 CU. YD.
SEEDING	3,168 SQ. YD.

NOTE: FOR PROP. STRUCTURE DATA SEE SHT. No. 20.

FOR ASPHALT PAVING UNDER GUARD RAIL SEE SHEET No. 4 & 6

\* SEE SHEET No. 23 FOR MORE ESTIMATED QUANTITIES

REF. NO.	STATION TO STATION	SIDE	ESTIMATED QUANTITIES		UNCL.	BEYOND GUARDRAIL BRIMULES 6" TILE	GUARDRAIL TYPE 5	AVENUE ASSEMBLY	BRIDGE TERMINAL ASSEMBLY	SEEDING AND SOIL MATTING
			EA.	EA.						
R-1	398+00 TO 401+43	RT.	343	1						
R-2	398+00 TO 400+55	RT.	255							
R-3	399+67.5 TO 401+55	RT.	112.5	75						
R-4	398+90.5 TO 401+78	LT.	287.5							
R-5	401+34 TO 401+63	RT.								
UD-1	398+00 TO 401+57	RT.			250	113				
UD-2	398+00 TO 401+42	LT.			250	107				
UD-3	398+00 TO 401+35	LT.			250	92				
UD-4	398+00 TO 401+91	LT.			250	85				
UD-5	398+00 TO 401+79	LT.			379					
UD-6	398+00 TO 401+72	LT.			372					
UD-7	398+00 TO 401+58	LT.			358					
UD-8	398+00 TO 401+59.82	RT.								
GR-1	398+00 TO 401+53.75	RT.								
GR-2	398+87.58 TO 401+75.08	RT.								
GR-3	401+54 TO 401+84	LT.								
E-5			998	75	3	2	1	2500	997	
TOTALS CARRIED TO GENERAL SUMMARY										



PLAN AND PROFILE  
STA. 398+00 TO STA. 402+00

LAK-2 - 946