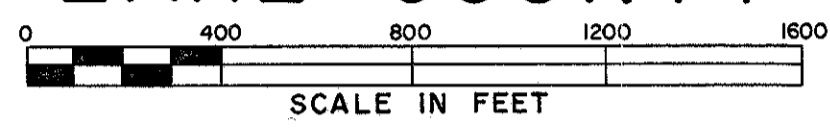


MONUMENTS TO BE SET AFTER CONSTRUCTION			
STATION	☐	STATION	☐
366+00	P.O.C.	408+02.23 S.C.	P.O.C.
374+39.13 P.T.	P.O.T.	419+53.48 C.S.	↓
384+00		422+53.48 S.T.	P.O.T.
394+00		430+50	
405+02.23 T.S.	↓	438+50	
		446+50	↓

LOCATION PLAN

LAK-2-7.39

MENTOR TOWNSHIP-VILLAGE OF MENTOR LAKE COUNTY



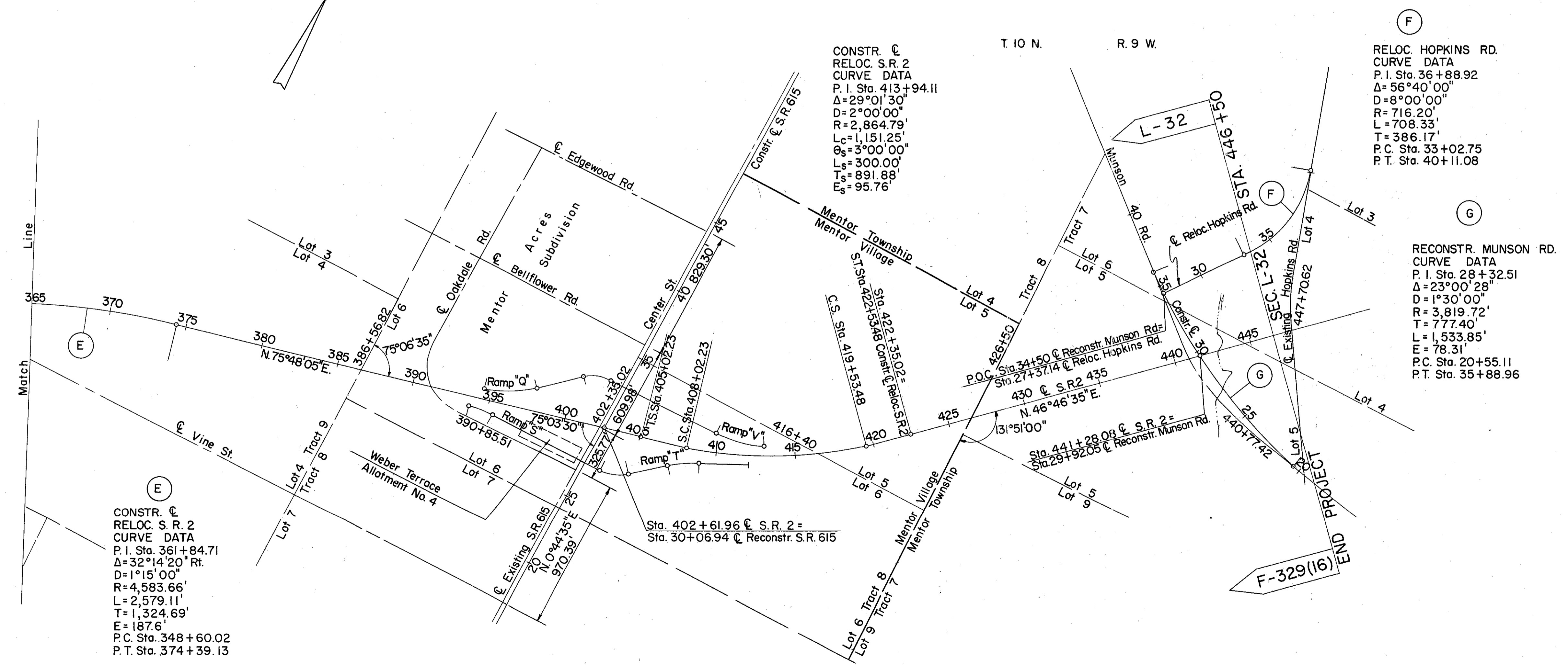
Received _____ Time _____
 Recorded _____
 Plat Book M Page 62, 62-1
 Signed _____ Recorder, Lake County, Ohio
 Fee _____ Paid _____

257
268

2
15

Signed John Buresh
 Right of Way Engineer, Interstate Projects
 Date 10/2/58
 Signed Robert E. Smith
 Robert E. Smith P.E. No. 13042
 Partner - Capitol Engineering Associates
 Date _____

Location and Limited Access approved and Journalized by the
 Director of Highways.
 Date _____ Volume _____ Page _____
 in the Director of Highways Journal.



CONSTR. &
 RELOC. S. R. 2
 CURVE DATA
 P. I. Sta. 361+84.71
 Δ=32°14'20" Rt.
 D=1°15'00"
 R=4,583.66'
 L=2,579.11'
 T=1,324.69'
 E=187.6'
 P.C. Sta. 348+60.02
 P.T. Sta. 374+39.13

CONSTR. &
 RELOC. S. R. 2
 CURVE DATA
 P. I. Sta. 413+94.11
 Δ=29°01'30"
 D=2°00'00"
 R=2,864.79'
 Lc=1,151.25'
 Os=3°00'00"
 Ls=300.00'
 Ts=891.88'
 Es=95.76'

RELOC. HOPKINS RD.
 CURVE DATA
 P. I. Sta. 36+88.92
 Δ=56°40'00"
 D=8°00'00"
 R=716.20'
 L=708.33'
 T=386.17'
 P.C. Sta. 33+02.75
 P.T. Sta. 40+11.08

RECONSTR. MUNSON RD.
 CURVE DATA
 P. I. Sta. 28+32.51
 Δ=23°00'28"
 D=1°30'00"
 R=3,819.72'
 T=777.40'
 L=1,533.85'
 E=78.31'
 P.C. Sta. 20+55.11
 P.T. Sta. 35+88.96