

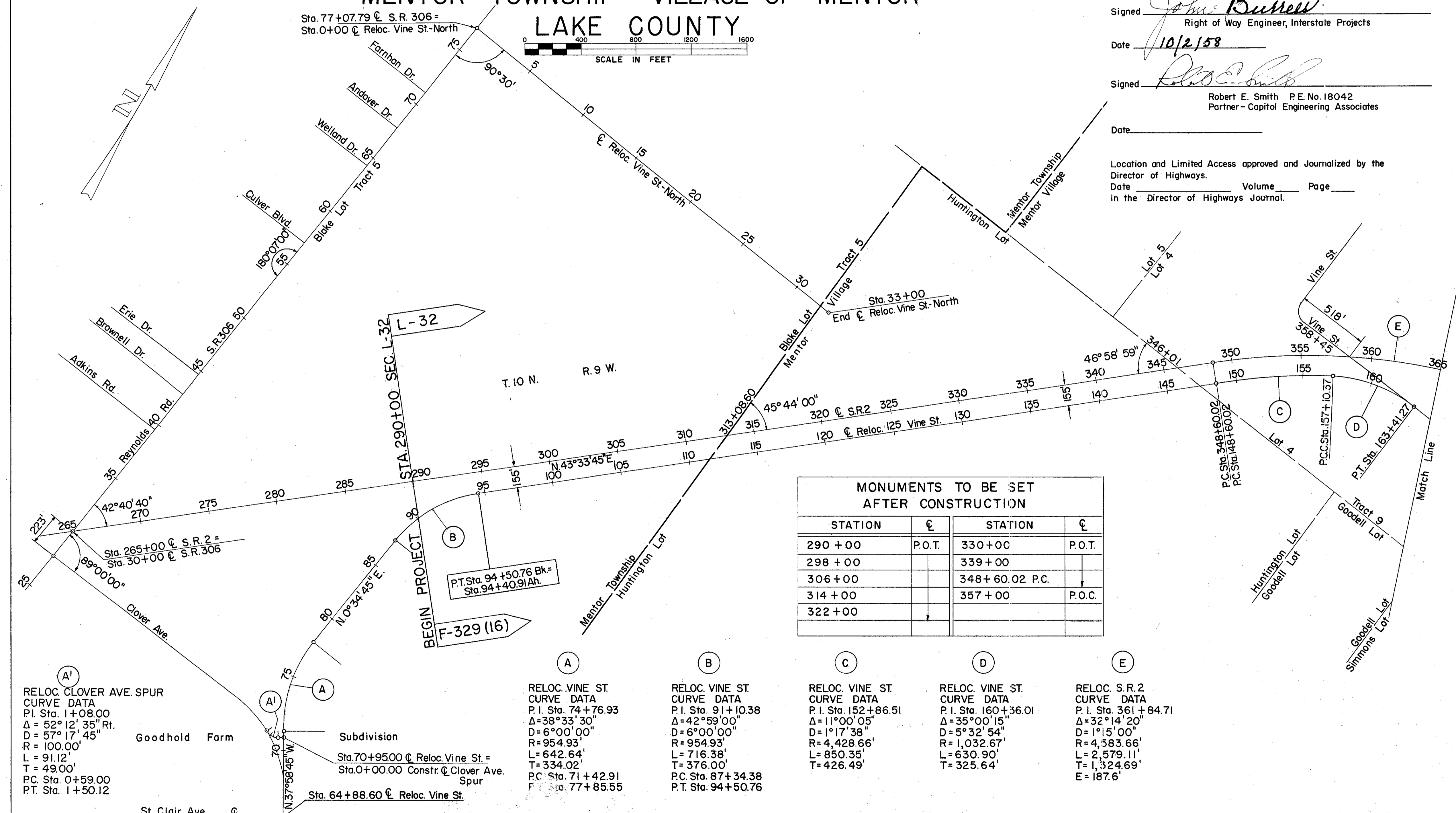
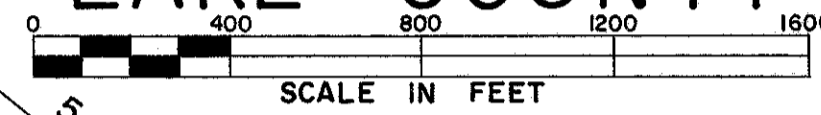
LOCATION PLAN

LAK-2-7.39

MENTOR TOWNSHIP—VILLAGE OF MENTOR

LAKE COUNTY

Sta. 77+07.79 \bar{C} S.R. 306 =
Sta. 0+00 \bar{C} Reloc. Vine St.-North



Received _____ Time _____
 Recorded _____
 Plat Book _____ Page _____
 Signed _____ Recorder, Lake County, Ohio
 Fee _____ Paid _____

256
268
1
15

Signed John Burrell
 Right of Way Engineer, Interstate Projects

Date 10/2/58

Signed Robert E. Smith
 Robert E. Smith P.E. No. 18042
 Partner - Capitol Engineering Associates

Date _____

Location and Limited Access approved and Journalized by the
 Director of Highways.
 Date _____ Volume _____ Page _____
 in the Director of Highways Journal.

**MONUMENTS TO BE SET
AFTER CONSTRUCTION**

STATION	\bar{C}	STATION	\bar{C}
290 + 00	P.O.T.	330 + 00	P.O.T.
298 + 00		339 + 00	
306 + 00		348 + 60.02 P.C.	
314 + 00		357 + 00	P.O.C.
322 + 00			

**RELOC. CLOVER AVE. SPUR
CURVE DATA**
 P.I. Sta. 1+08.00
 $\Delta = 52^{\circ}12'35''$ Rt.
 $D = 57^{\circ}17'45''$
 $R = 100.00'$
 $L = 91.12'$
 $T = 49.00'$
 P.C. Sta. 0+59.00
 P.T. Sta. 1+50.12

Subdivision
 Sta. 70+95.00 \bar{C} Reloc. Vine St. =
 Sta. 0+00.00 Constr. \bar{C} Clover Ave.
 Spur
 Sta. 64+88.60 \bar{C} Reloc. Vine St.

**RELOC. VINE ST.
CURVE DATA**
 P.I. Sta. 74+76.93
 $\Delta = 38^{\circ}33'30''$
 $D = 6^{\circ}00'00''$
 $R = 954.93'$
 $L = 642.64'$
 $T = 334.02'$
 P.C. Sta. 71+42.91
 P.T. Sta. 77+85.55

**RELOC. VINE ST.
CURVE DATA**
 P.I. Sta. 91+10.38
 $\Delta = 42^{\circ}59'00''$
 $D = 6^{\circ}00'00''$
 $R = 954.93'$
 $L = 716.38'$
 $T = 376.00'$
 P.C. Sta. 87+34.38
 P.T. Sta. 94+50.76

**RELOC. VINE ST.
CURVE DATA**
 P.I. Sta. 152+86.51
 $\Delta = 11^{\circ}00'05''$
 $D = 1^{\circ}17'38''$
 $R = 4,428.66'$
 $L = 850.35'$
 $T = 426.49'$

**RELOC. VINE ST.
CURVE DATA**
 P.I. Sta. 160+36.01
 $\Delta = 35^{\circ}00'15''$
 $D = 5^{\circ}32'54''$
 $R = 1,032.67'$
 $L = 630.90'$
 $T = 325.64'$

**RELOC. S.R. 2
CURVE DATA**
 P.I. Sta. 361+84.71
 $\Delta = 32^{\circ}14'20''$
 $D = 1^{\circ}15'00''$
 $R = 4,583.66'$
 $L = 2,579.11'$
 $T = 1,324.69'$
 $E = 187.6'$