

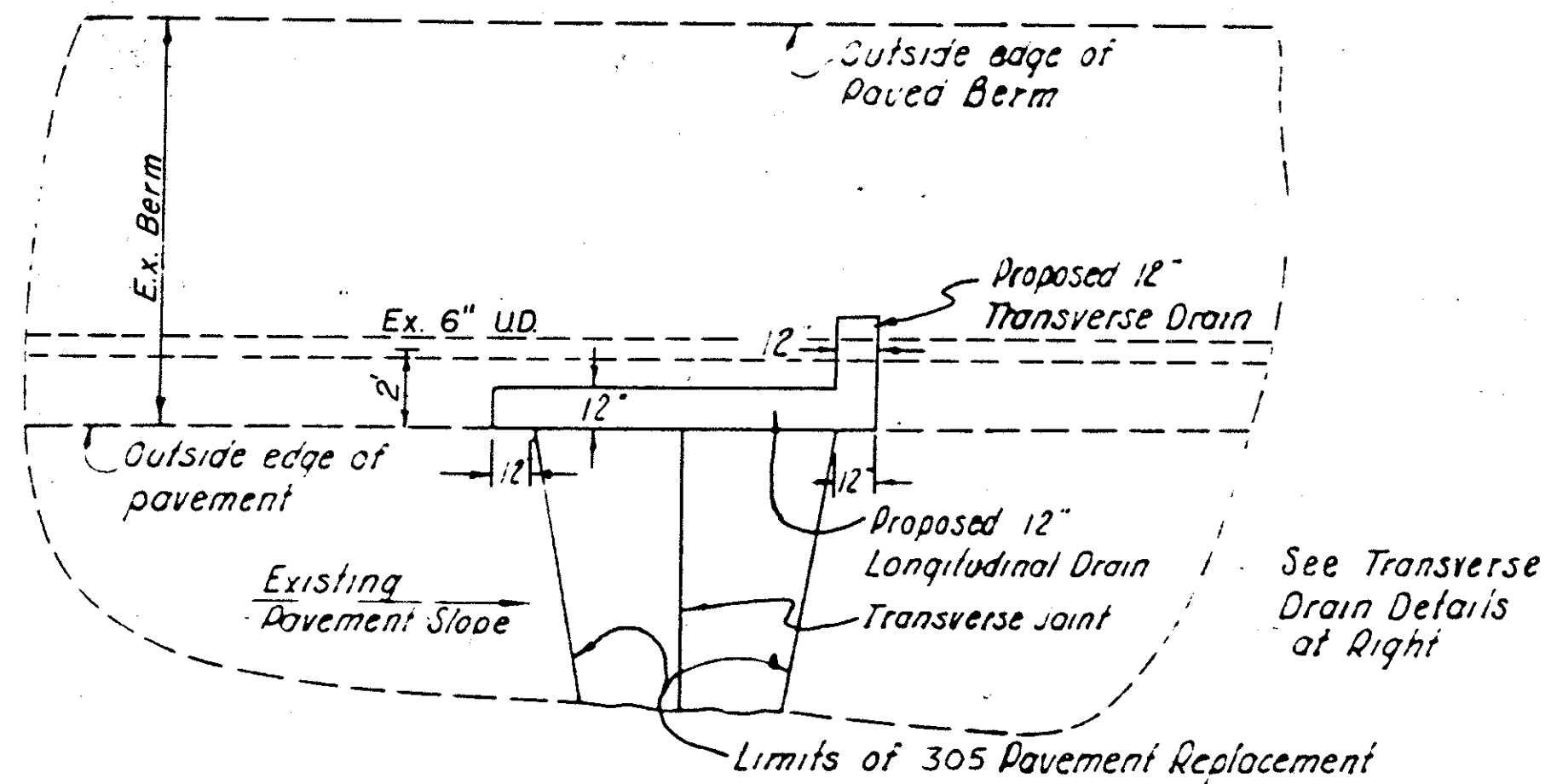
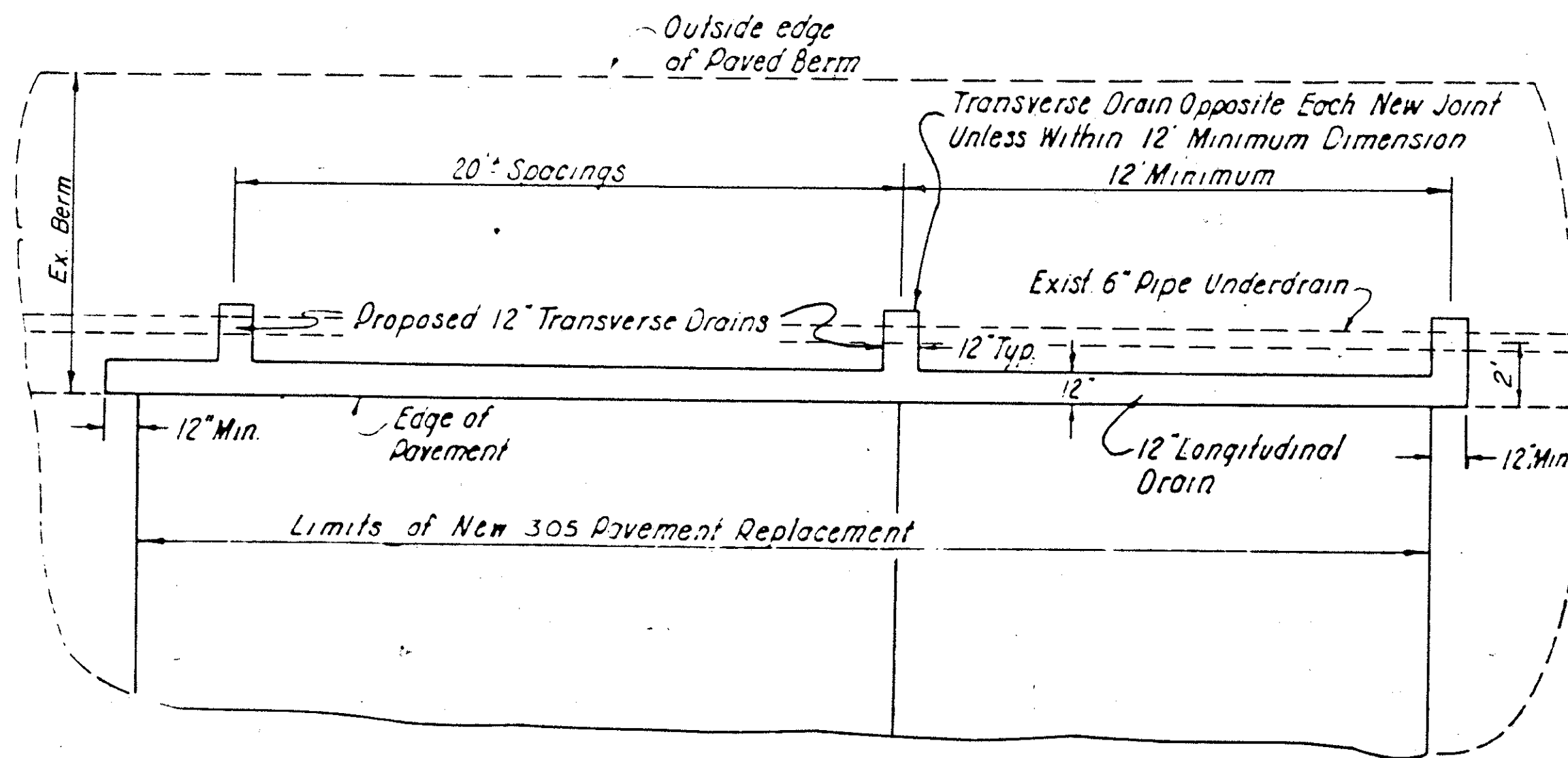
# LONGITUDINAL & TRANSVERSE AGGREGATE DRAIN DETAILS

FHWA REGION	STATE	PROJECT
5	OHIO	

LAKE COUNTY  
LAK-2-6.14

44  
153

For Full Width 305 Replacement, the Spacing of the Transverse Drains on the Inside Berm shall be the same as for the Outside Berm



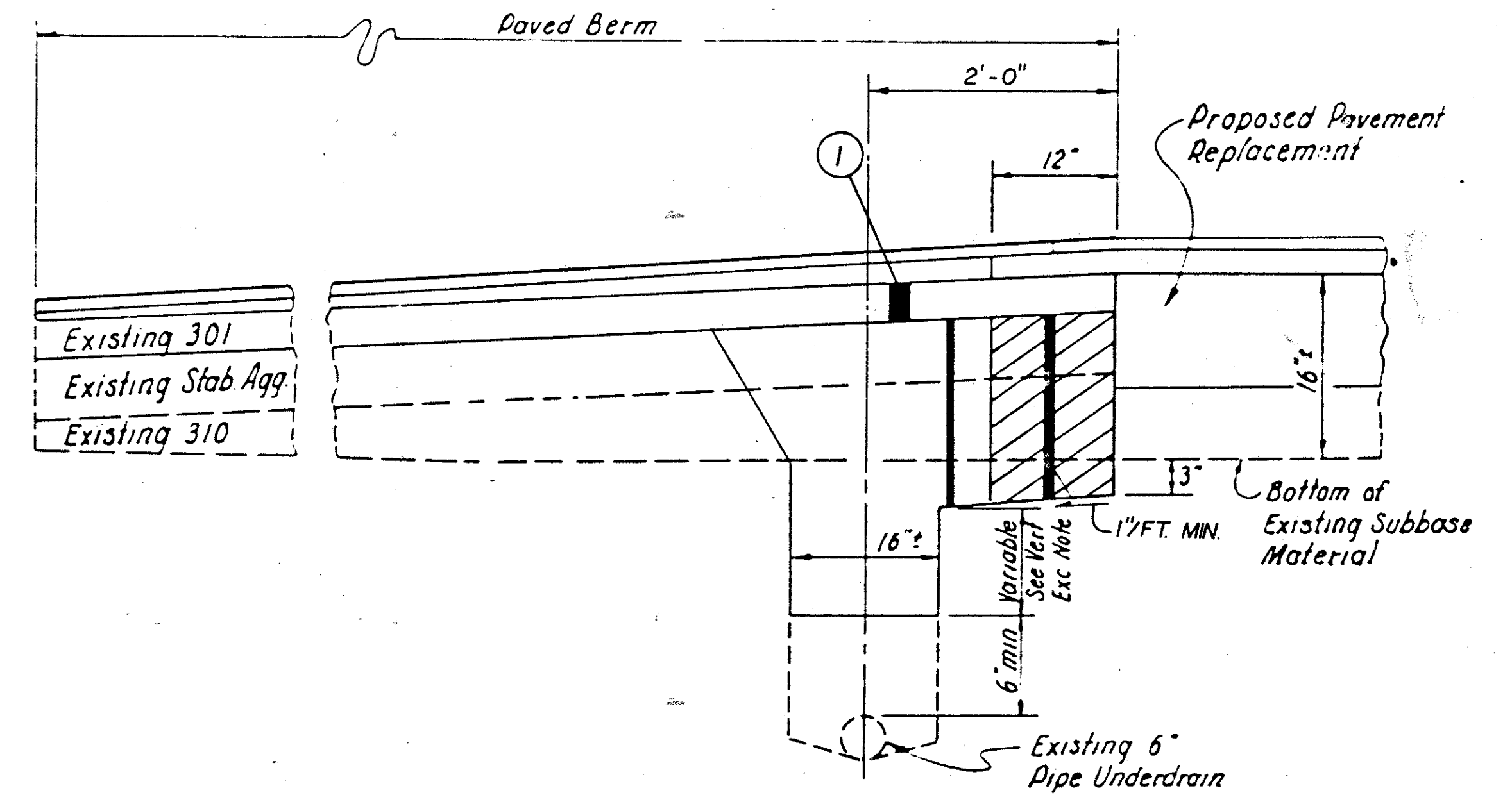
## TYPICAL LONGITUDINAL AND TRANSVERSE AGGREGATE DRAIN DETAILS WITH 305 PAVEMENT REPLACEMENTS

### NOTES

LONGITUDINAL AGGREGATE DRAINS SHALL BE CONSTRUCTED CONTINUOUSLY ALONG THE PAVEMENT EDGES FOR THE FULL LENGTH OF 305 PAVEMENT REPLACEMENTS. TRANSVERSE AGGREGATE DRAINS SHALL BE CONSTRUCTED AT 20 FEET MAXIMUM SPACING ALONG THE LENGTH OF THE PAVEMENT REPLACEMENTS OR AS DIRECTED BY THE ENGINEER.

THE VERTICAL LIMIT OF THE EXCAVATION SHALL BE TO SIX (6) INCHES ABOVE THE TOP OF THE EXISTING PIPE UNDERDRAIN OR TO THE TOP OF VERTICAL LIMIT OF THE EXISTING NO. 8 AGGREGATE UNDERDRAIN TRENCH BACKFILL. POSITIVE DRAINAGE MUST BE SECURED. ANY TILE BROKEN OR DAMAGED AS A RESULT OF THIS OPERATION SHALL BE REPLACED BY THE CONTRACTOR AT HIS EXPENSE.

THE UNIT PRICE BID FOR ITEMS 605 AGGREGATE DRAINS USING NO. 8 AGGREGATE, AS PER PLAN, SHALL INCLUDE THE REMOVING AND DISPOSING OF EXISTING BERM MATERIALS, THE FURNISHING, PLACING AND COMPACTING OF THE NO. 8 AGGREGATE, AND ALL INCIDENTAL REQUIREMENTS NECESSARY TO COMPLETE THESE ITEMS. ASPHALT CONCRETE COURSES SHALL BE PAID FOR SEPARATELY UNDER PERTINENT 301 AND 846 ITEMS.



## TRANSVERSE DRAIN DETAIL

- ① 3" -301 Bituminous Aggregate Base AC-20 or RT-11 or RT-12
- ② 605 Longitudinal Aggregate Drain, As Per Plan, Using No. 8 Aggregate
- ③ 605 Transverse Aggregate Drain, As Per Plan, Using No. 8 Aggregate

	LONGITUDINAL	TRANSVERSE
CITY OF MENTOR	15,000 L.F.	2500 L.F.
PAINESVILLE TWP.	3500 L.F.	600 L.F.