

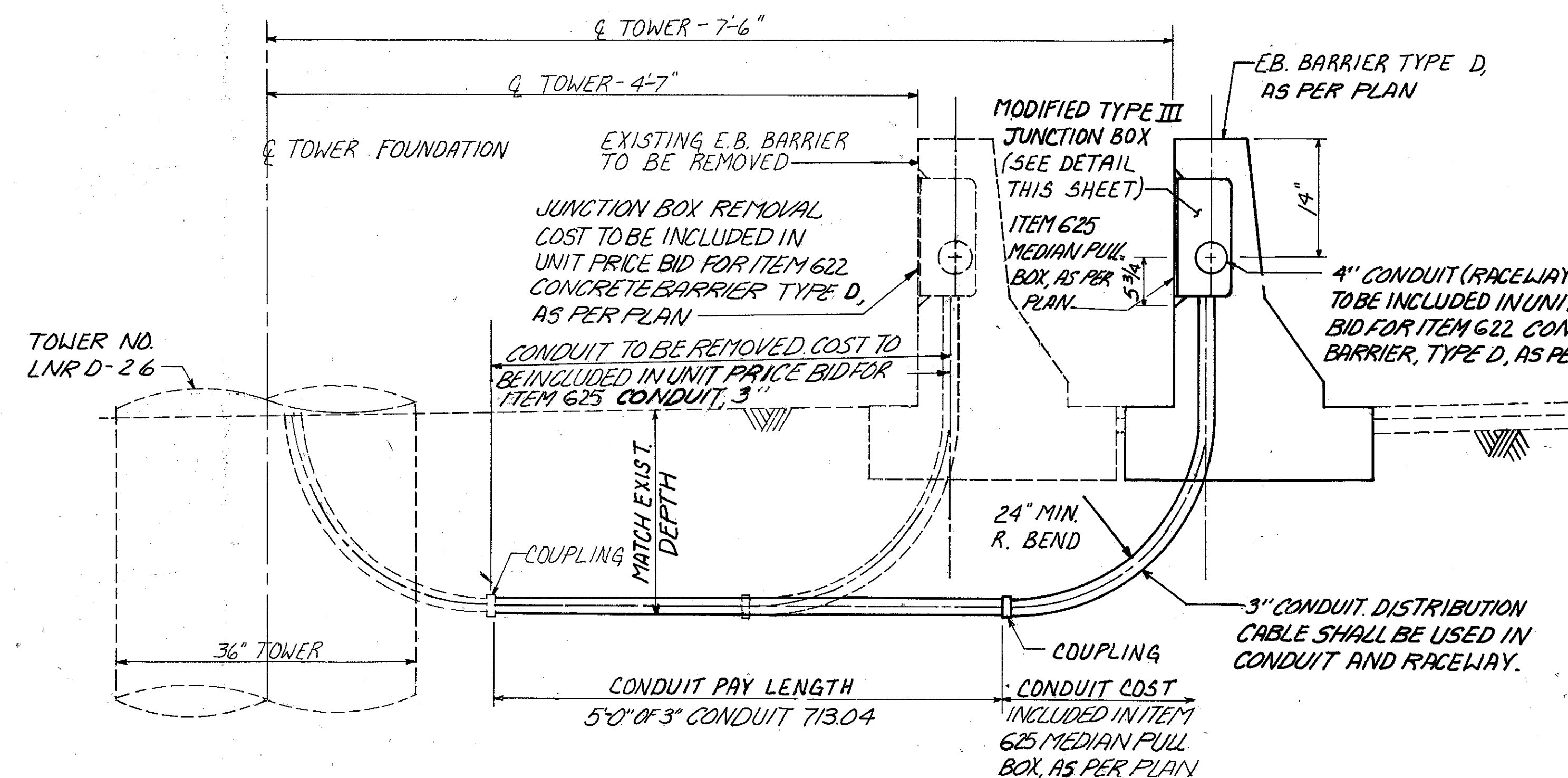
LIGHTING QUANTITIES AND DETAILS

CALC BY _____
DATE _____
CHKD BY _____
DATE _____

LAK-2-5.96

OHIO
FHWA REGION 5

14A
31

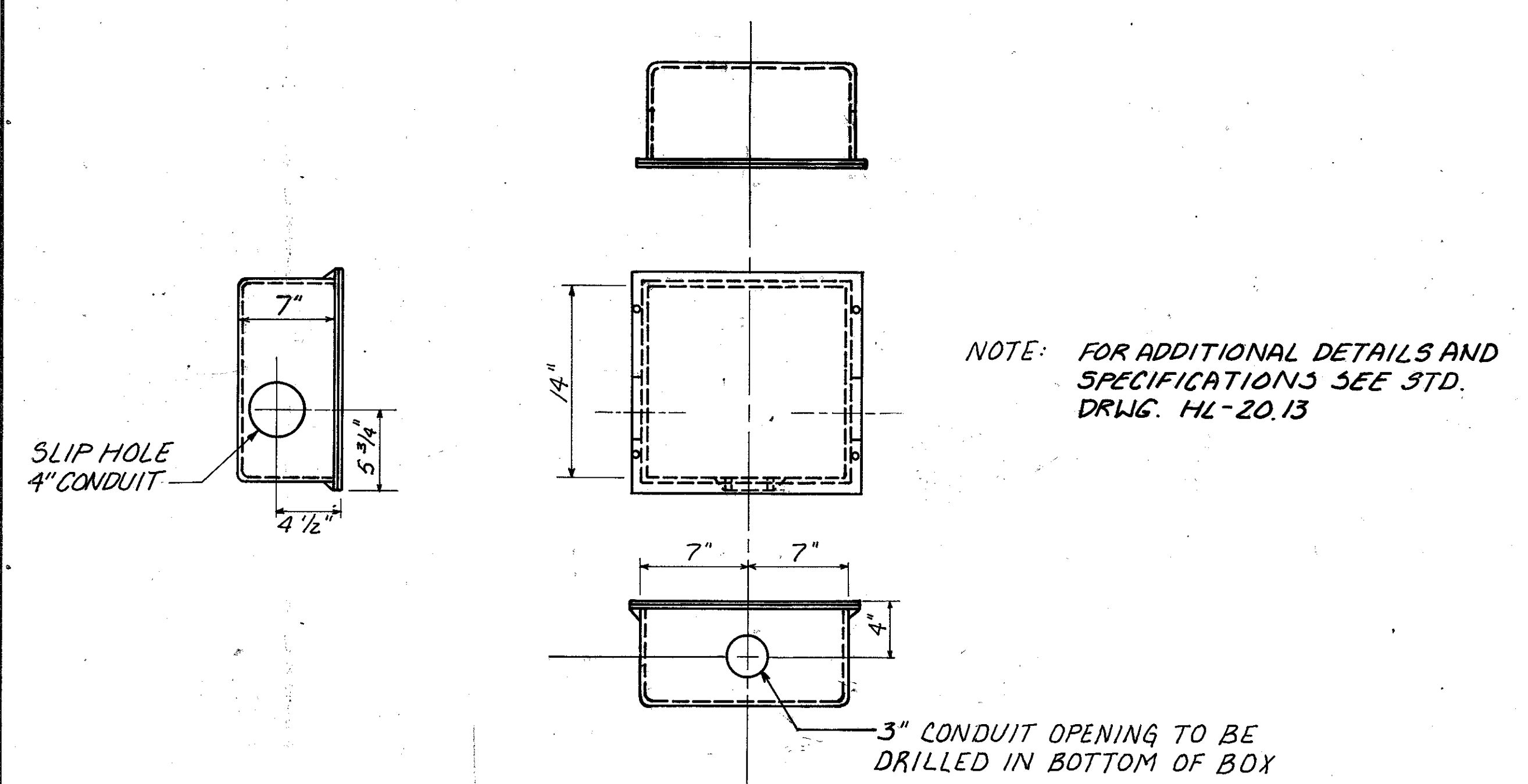


JUNCTION BOX AND CONDUIT DETAIL
STA. 217+81

- NOTES: 1) SEE PLAN SHT. 15 FOR ELECTRICAL WORK LIMITS.
2) REMOVAL OF EXISTING CABLE TO BE INCLUDED IN UNIT PRICE BID FOR ITEM 625 NO. 4 AWG 5000 VOLT DISTRIBUTION CABLE.
3) NO SPLICES IN THE DISTRIBUTION CABLE ARE TO OCCUR BETWEEN THE CONNECTION AT THE JUNCTION BOX AT STATION 213+21 AND THE CONNECTION IN THE LIGHT TOWER AT STATION 217+81. THE CABLE IS TO BE PULLED THROUGH THE RACEWAY, JUNCTION BOX AND 3" CONDUIT INTO THE LIGHT TOWER.
4) THE EXISTING JUNCTION BOX AT STATION 217+81 MAY BE SALVAGED, AS DETERMINED BY THE ENGINEER, AND REUSED IN PLACE OF A NEW JUNCTION BOX AT THAT STATION. COST FOR SALVAGING THE JUNCTION BOX TO BE INCLUDED IN ITEM 625 MEDIAN PULL BOX, AS PER PLAN.
5) ELECTRICAL SERVICE TO THE LIGHT TOWER AT STATION 217+81 MAY BE INTERRUPTED DURING REMOVAL AND REPLACEMENT OF THE CONCRETE MEDIAN BARRIER. WHEN THE NEW BARRIER HAS BEEN COMPLETED SUCH THAT THE ELECTRICAL SERVICE TO THE LIGHT TOWER CAN BE RESTORED, SERVICE WILL BE CONNECTED AS SOON AS POSSIBLE. THE OVERALL TIME FOR ELECTRIC INTERRUPTION SHALL BE KEPT TO A MINIMUM.

LIGHTING QUANTITIES SUB-SUMMARY

REFERENCE NO.	STATION TO STATION	SIDE	625				
			TRENCH, 24" DEEP	CONDUIT, 3", 713.04	NO. 4 AWG 5000 VOLT DISTRIBUTION CABLE	CONNECTOR KIT TYPE VII B	MEDIAN PULL BOX, AS PER PLAN
			L.F.	L.F.	L.F.	E.A.	E.A.
	213+21	Q				2	
	213+21-217+81	EB			984		
	217+81	Q	5	5			1
	TOTALS		5	5	984	2	1



MODIFIED TYPE III JUNCTION BOX
(PAYMENT TO BE INCLUDED IN UNIT PRICE BID FOR ITEM 625 MEDIAN PULL BOX, AS PER PLAN)