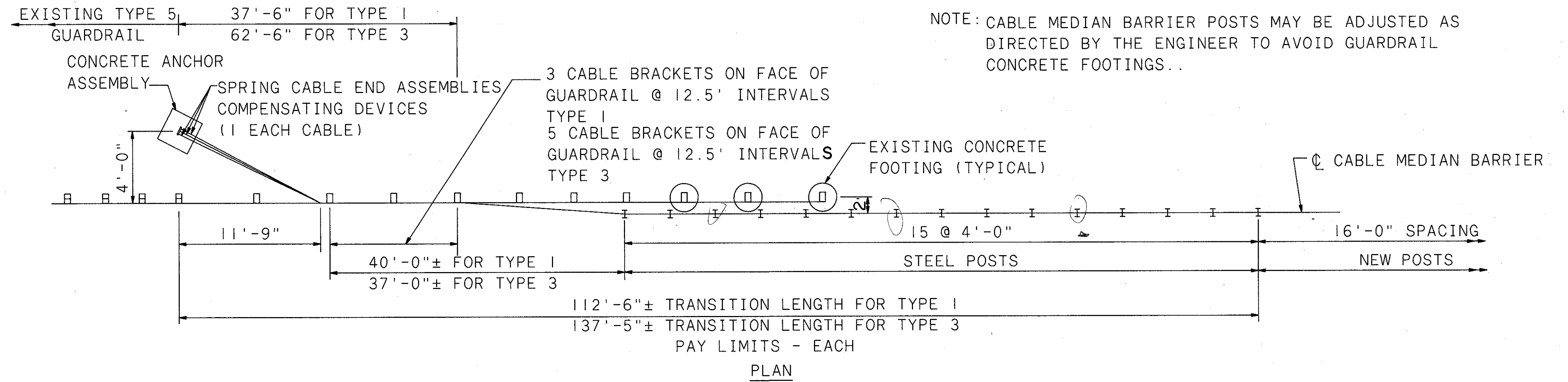


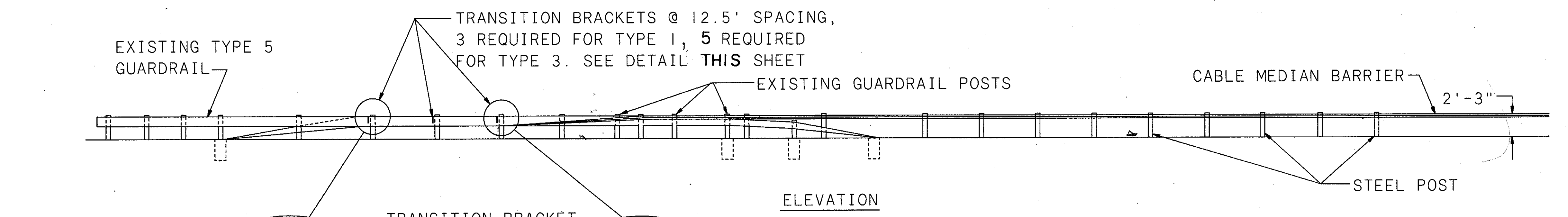
NOTES: STEEL USED AND THE FABRICATION OF THE BRACKET SHALL CONFORM TO ASTM A36. THE BRACKET SHALL BE GALVANIZED AFTER FABRICATION ACCORDING TO ASTM A123.

**GUARDRAIL TRANSITION BRACKET**

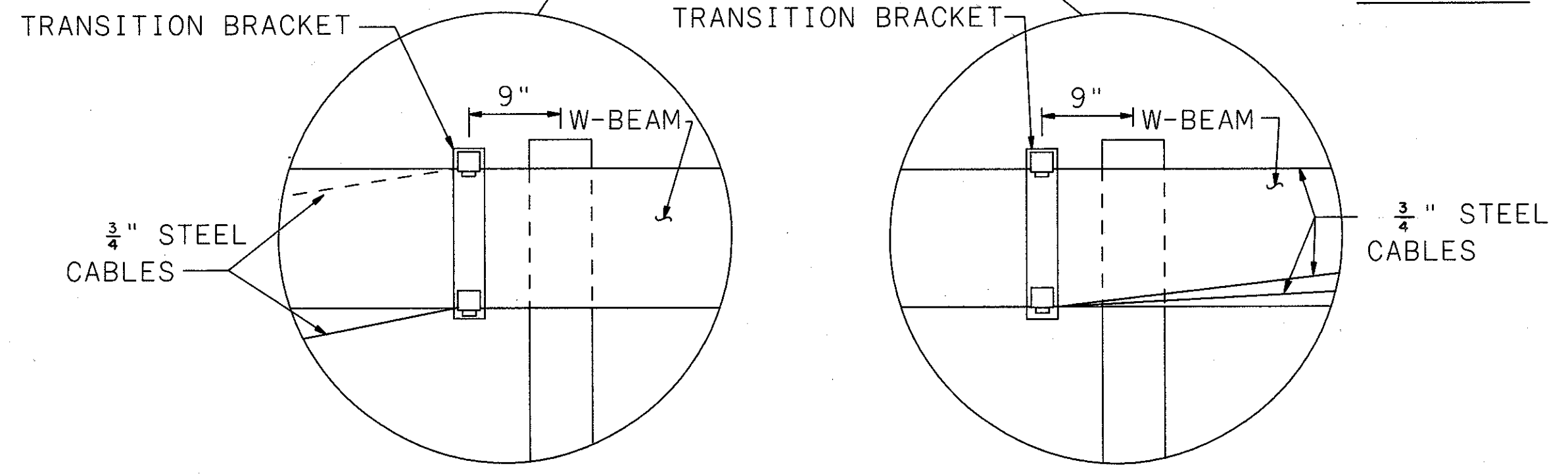


NOTE: CABLE MEDIAN BARRIER POSTS MAY BE ADJUSTED AS DIRECTED BY THE ENGINEER TO AVOID GUARDRAIL CONCRETE FOOTINGS.

**PLAN**



**ELEVATION**



**CABLE MEDIAN BARRIER TO GUARDRAIL TRANSITION DETAIL TYPE 1 & TYPE 3**

LIST OF MAJOR COMPONENTS		
ITEM	TYPE 1	TYPE 3
STEEL POST	13	13
Transition Bracket	3	5
3/4" Steel Cable	3 @ 108'-6" ±	3 @ 133'-6" ±
Concrete Anchor	1	1
Turnbuckle	3	3