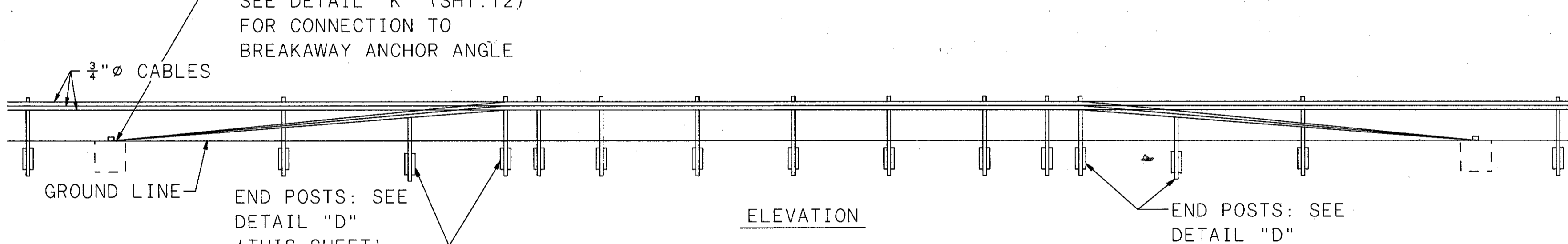
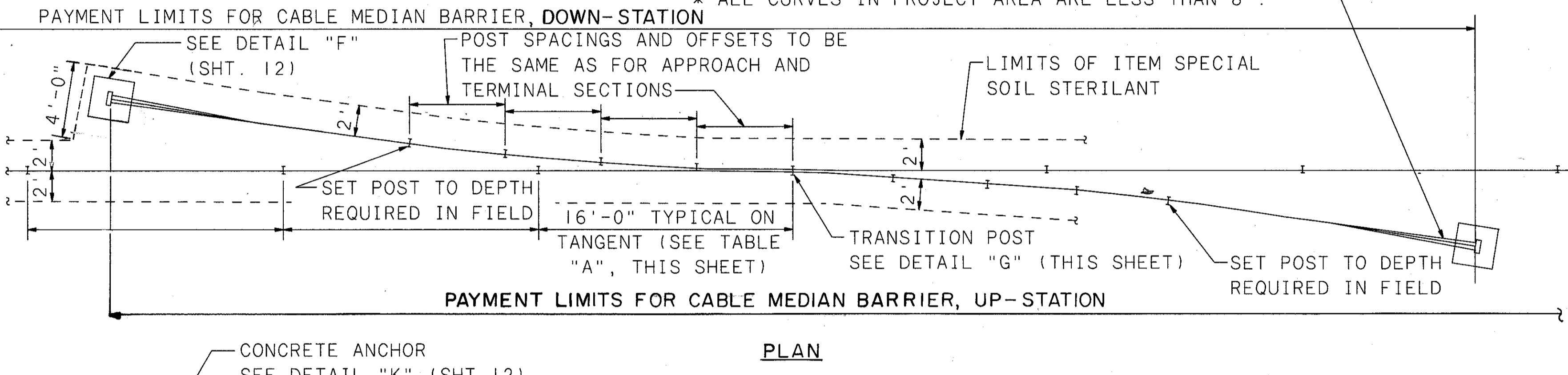
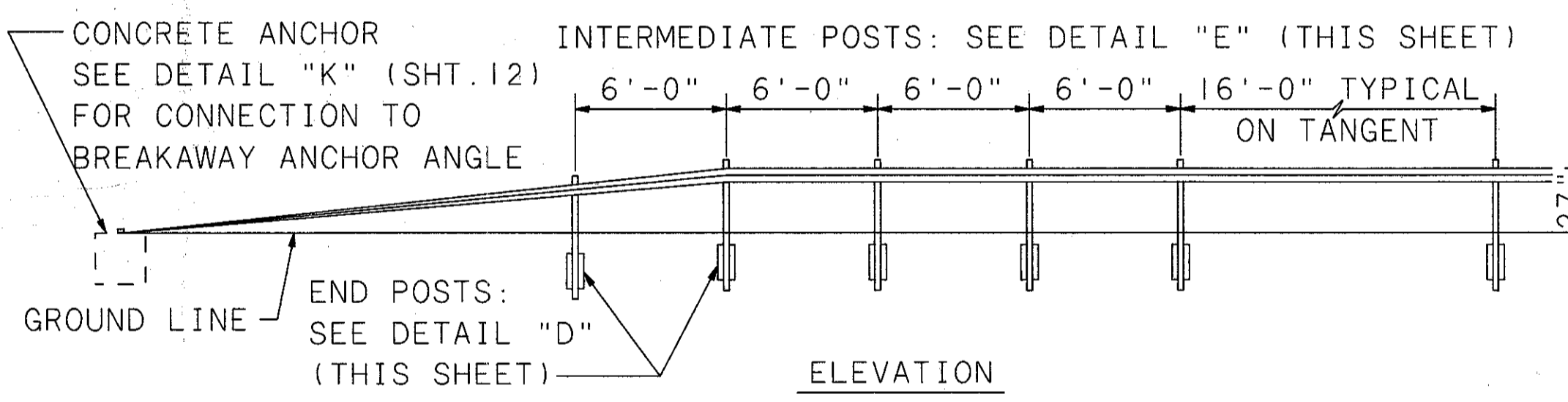
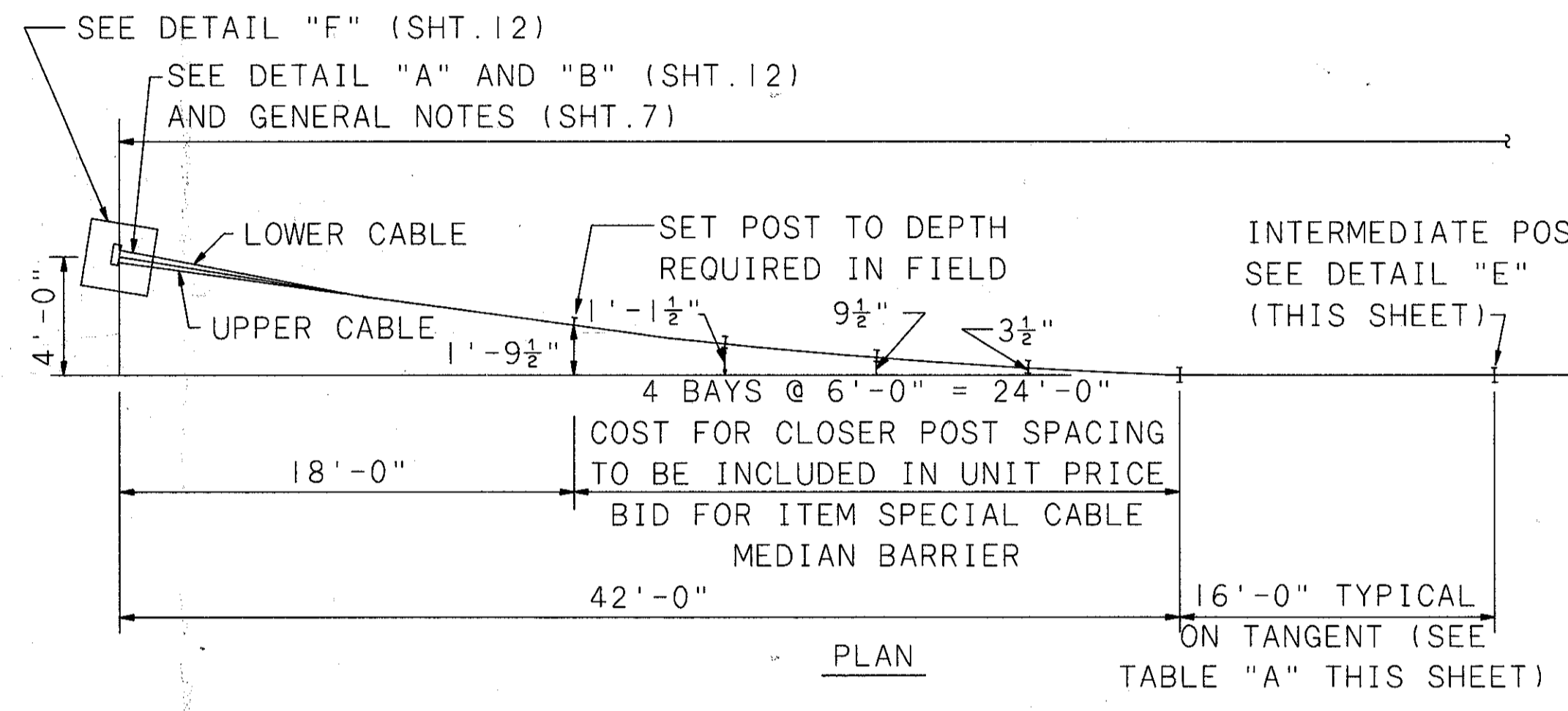


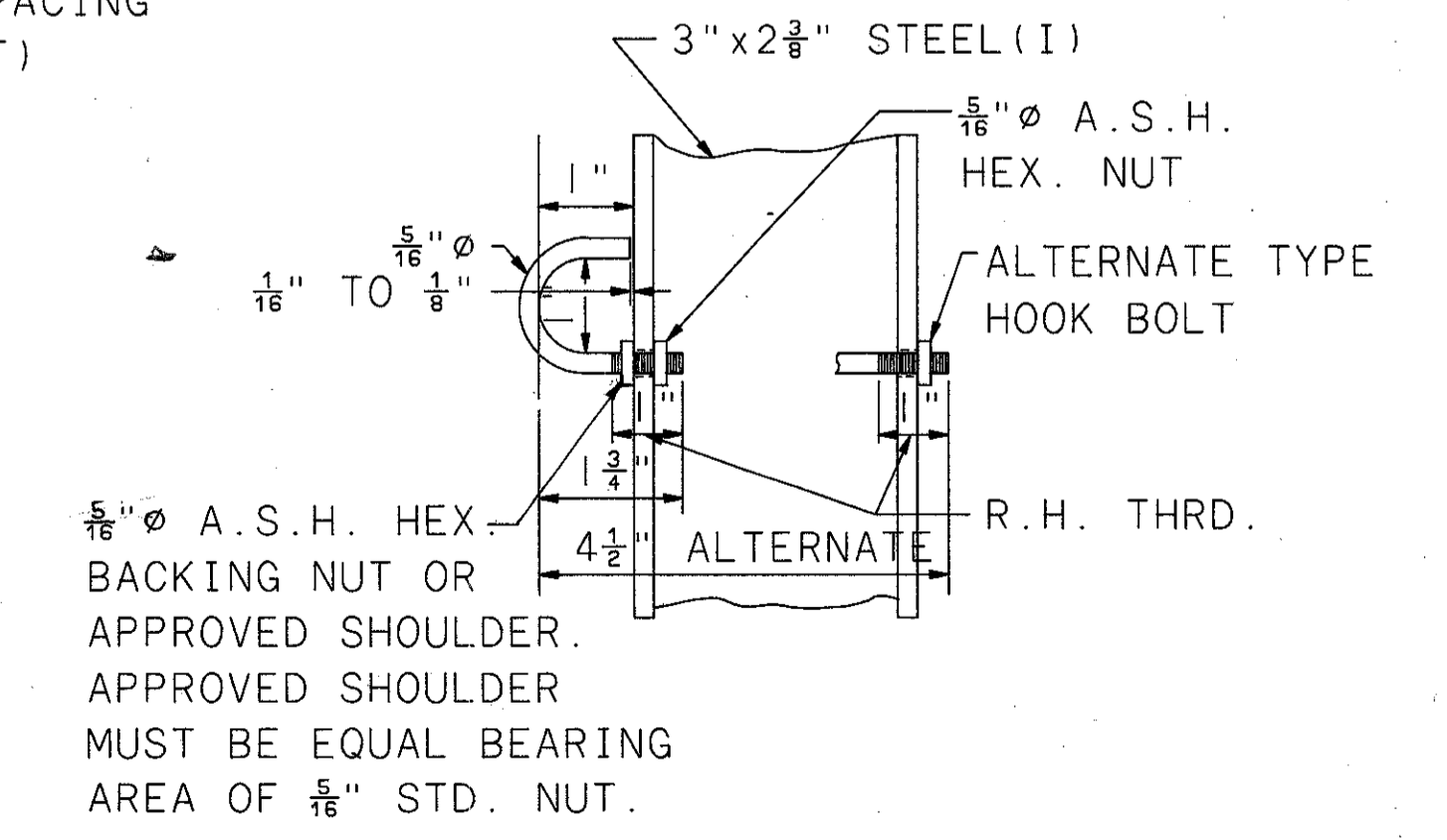
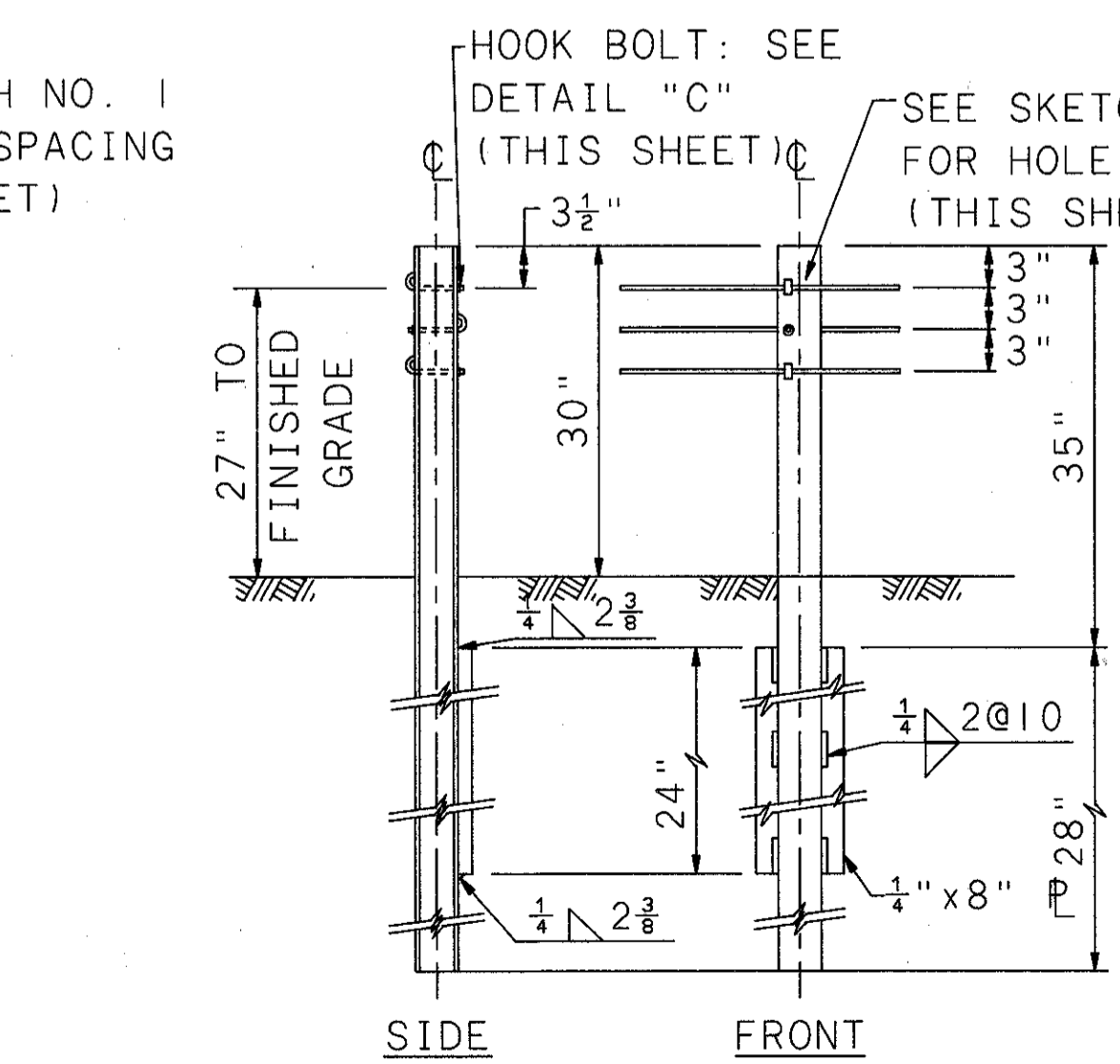
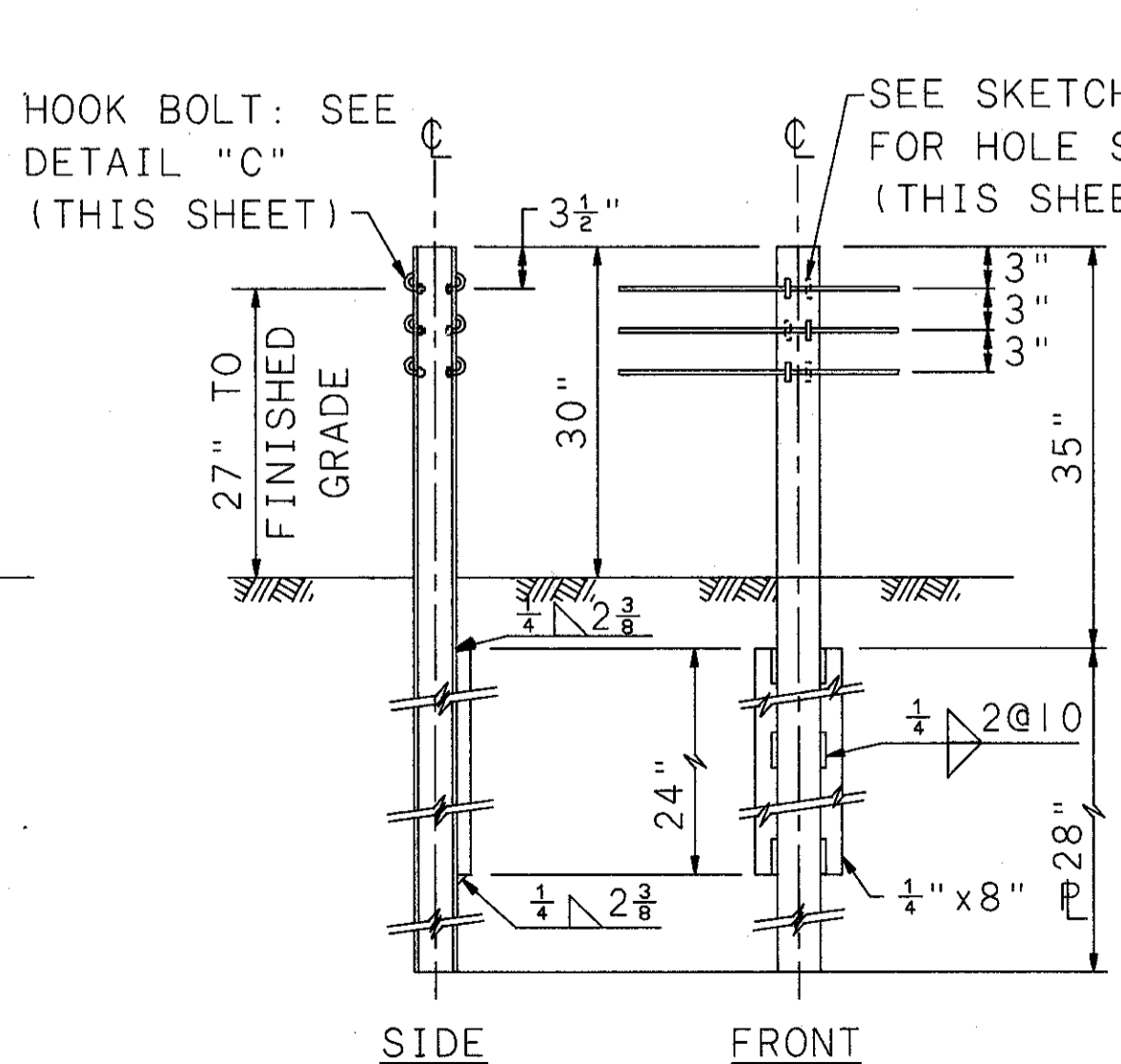
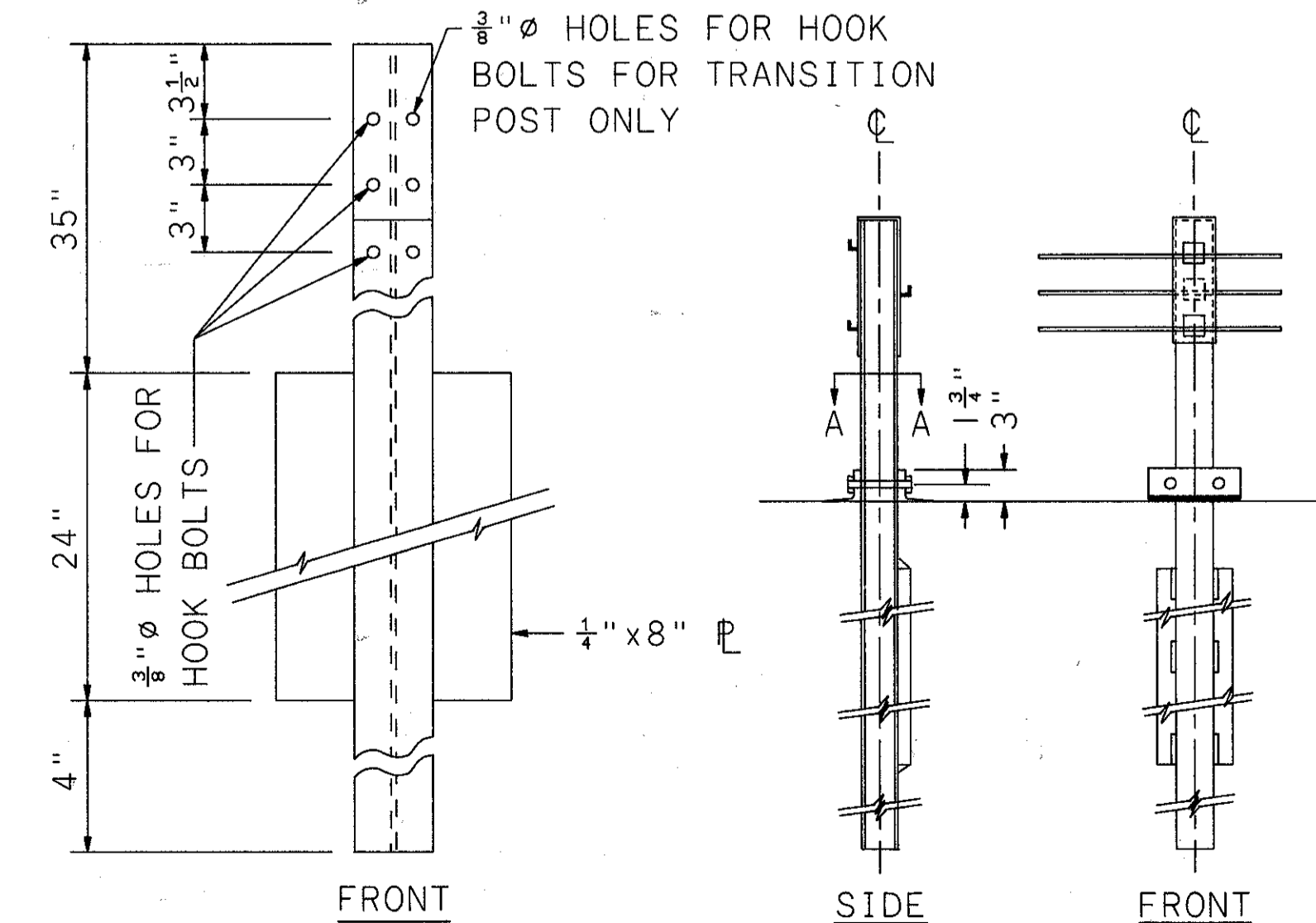
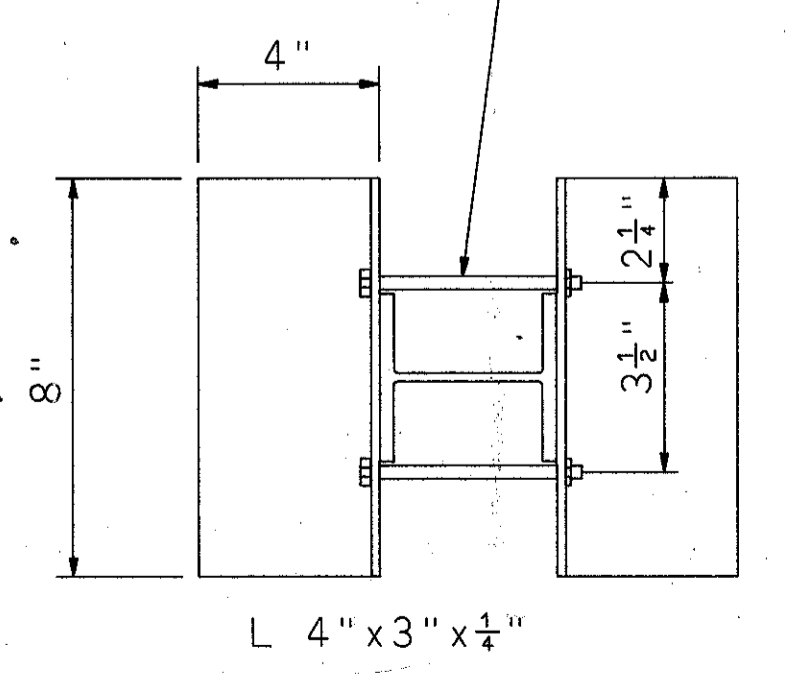
TABLE "A"	
CURVATURE (Degree or Radius)*	POST SPACING
8° OR LESS	16'
MORE THAN 8° TO 13° (440' Radius)	12'

* ALL CURVES IN PROJECT AREA ARE LESS THAN 8°.

CENTER CABLE SPRING ASSEMBLY TO BE STAGGERED TO AVOID INTERFERENCE WITH OUTSIDE SPRING ASSEMBLIES



$\frac{3}{8}$ " ϕ HOLES FOR $\frac{3}{4}$ " BOLTS
 4 1/2" LONG WITH NUTS AND WASHERS. BOLTS TORQUED TO 100 ± 20 FT. LBS. AFTER POST IS DRIVEN.



PRI 0595 DETAIL, MAY 7, 1990