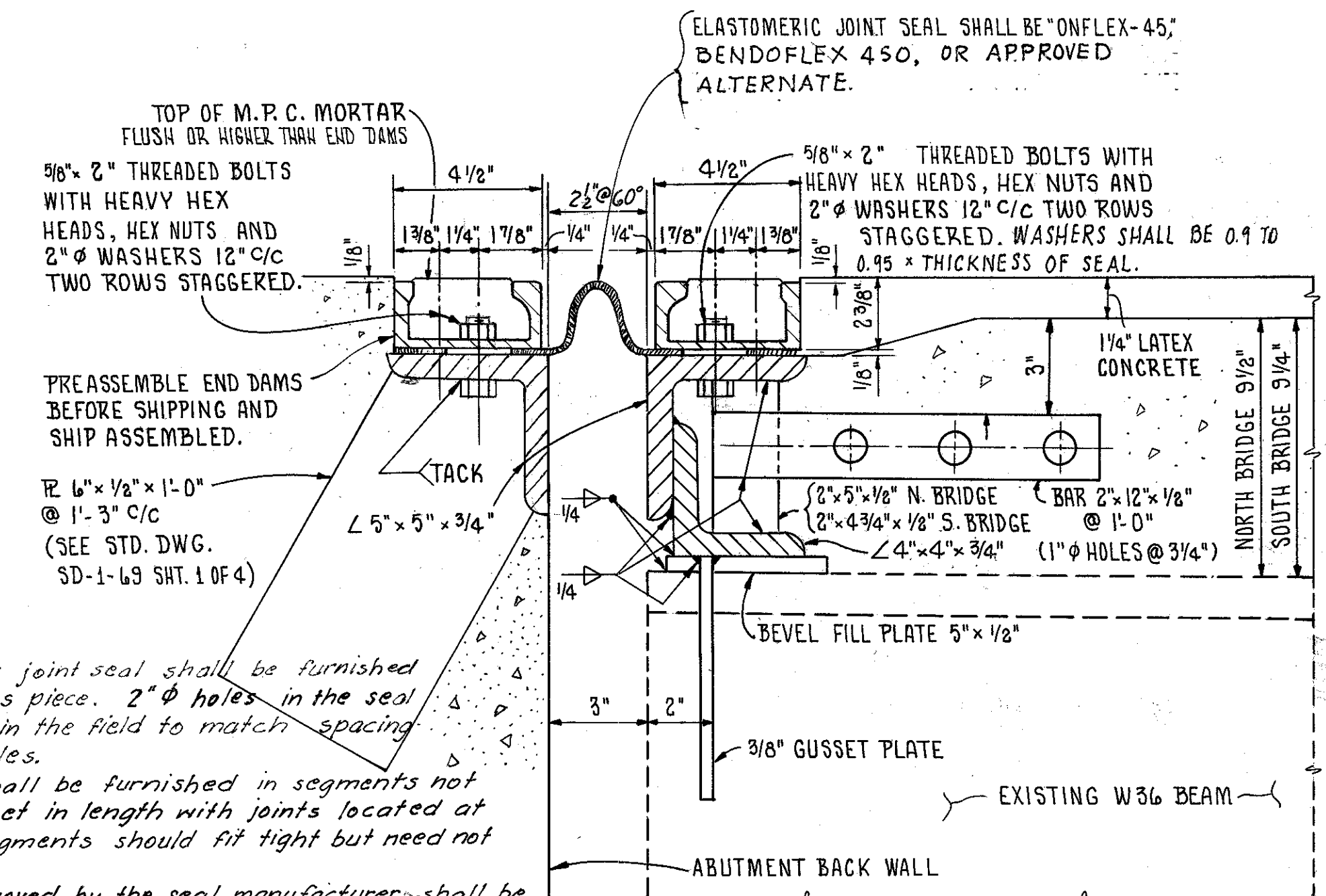
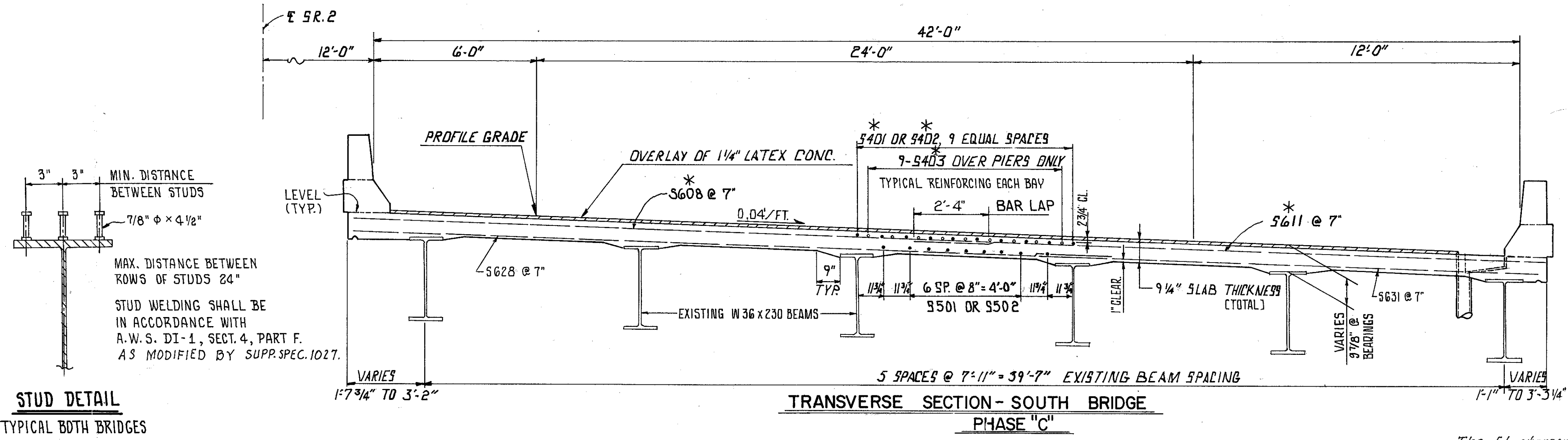


LOCATION	NORTH BRIDGE		SOUTH BRIDGE	
	NORTH SIDE	SOUTH SIDE	NORTH SIDE	SOUTH SIDE
ABUT #1	2'-9 1/8"	2'-4"	1'-7 3/4"	3'-3 1/4"
1/4	3'-0 3/4"	1'-11 7/8"	2'-0 5/8"	2'-9 3/8"
1/2	3'-2 3/4"	1'-8 3/8"	2'-4 3/4"	2'-4 1/8"
3/4	3'-4 1/8"	1'-5 3/4"	2'-8 1/8"	1'-11 3/4"
PIER #1	3'-4 3/4"	1'-3 7/8"	2'-10 3/4"	1'-8"
1/4	3'-4 3/8"	1'-2 1/2"	3'-0 7/8"	1'-4 1/2"
1/2	3'-2 7/8"	1'-2 3/8"	3'-1 7/8"	1'-2 1/4"
3/4	3'-0 1/4"	1'-3 3/8"	3'-1 3/4"	1'-1 1/8"
PIER #2	2'-8 1/2"	1'-5 1/2"	3'-0 3/8"	1'-1 1/4"
1/4	2'-4 5/8"	1'-8 1/8"	2'-10 3/8"	1'-2 1/8"
1/2	2'-0"	1'-11 1/2"	2'-7 3/4"	1'-3 7/8"
3/4	1'-6 5/8"	2'-3 5/8"	2'-4 1/4"	1'-6 3/8"
ABUT #2	1'-0 1/2"	2'-8 1/2"	2'-0"	1'-9 1/2"

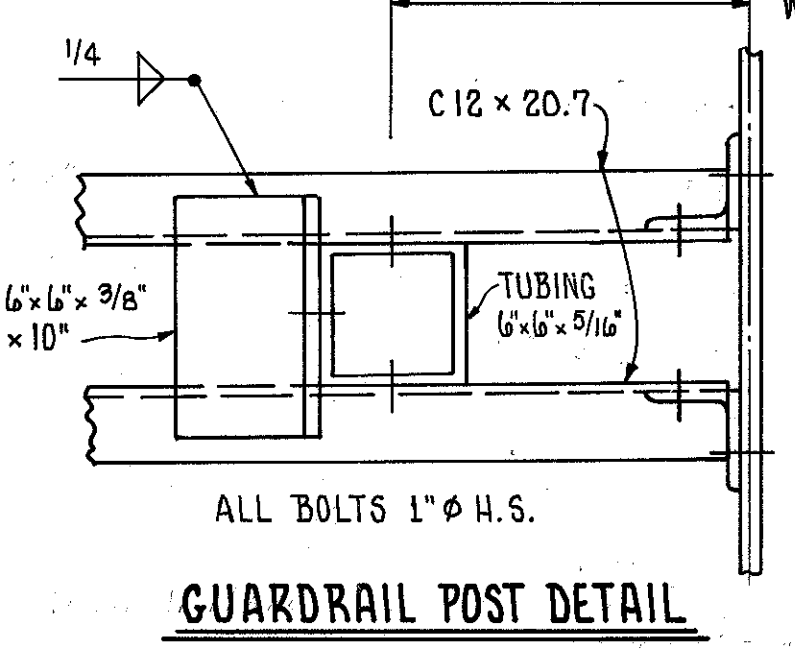
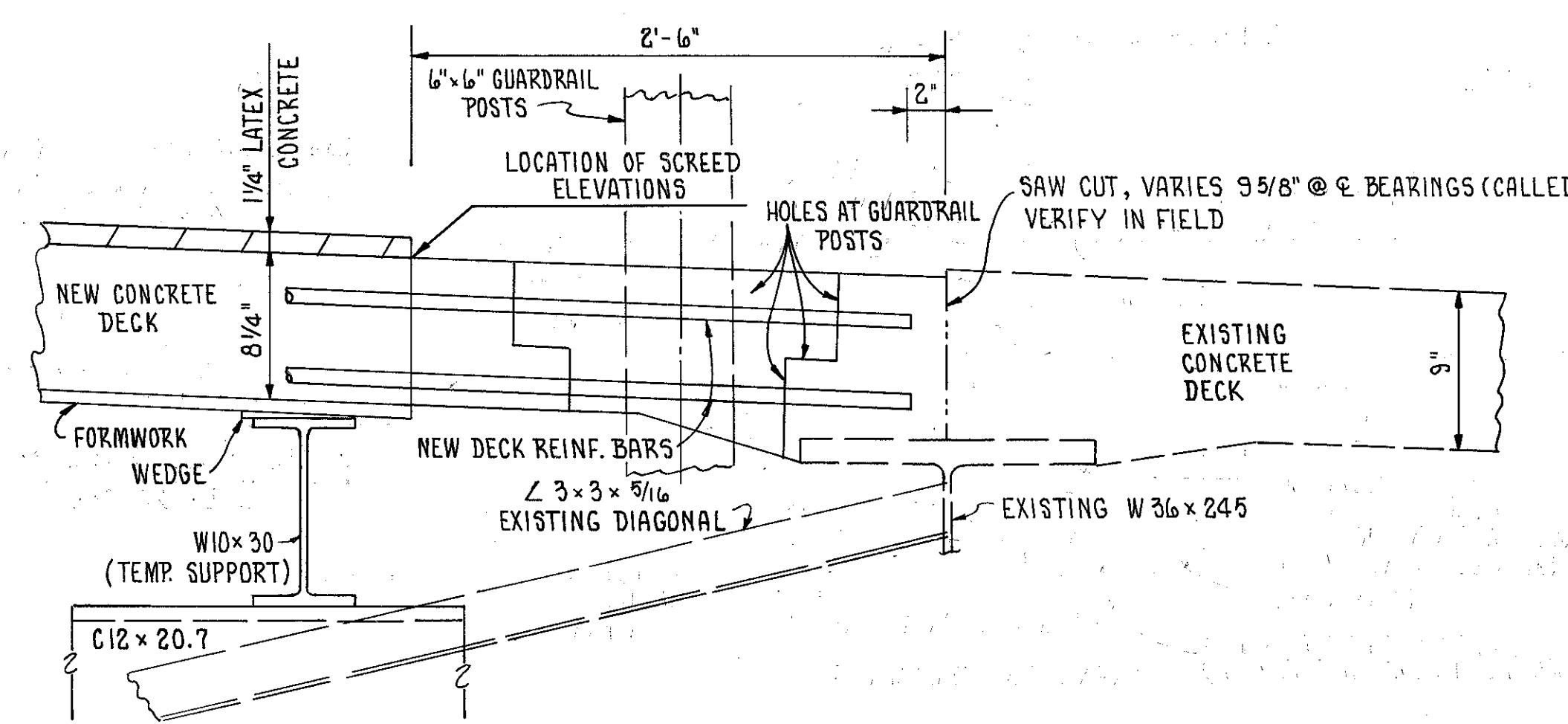
DISTANCES MEASURED FROM CENTERLINE OF FASCIA BEAMS TO OUTSIDE OF DECK @ 1/4 POINTS OF SPANS.



**NOTES**

DECK SLAB DEPTH: THE DISTANCE SHOWN FROM TOP OF DECK SLAB TO TOP OF STEEL BEAM IS THE DESIGN DIMENSION. THE QUANTITY OF DECK CONCRETE TO BE PAID FOR SHALL BE BASED ON THIS DIMENSION, EVEN THOUGH DEVIATION FROM IT MAY BE NECESSARY BECAUSE THE TOP FLANGE OF THE BEAM MAY NOT HAVE THE EXACT CAMBER OR CONFORMATION REQUIRED TO PLACE IT PARALLEL TO THE FINISHED GRADE.

A HAUNCH WIDTH OF 9" SHALL BE USED FOR COMPUTING QUANTITY OF CONCRETE. HOWEVER, THE HAUNCH WIDTH MAY VARY BETWEEN 6" AND 12" (PROVIDED THAT THE SLOPE SHALL NOT BE MORE THAN 1:4 FOR A HAUNCH LESS THAN 9" IN WIDTH.)



FRANKLIN CONSULTANTS INC.			4	8
Consulting Engineers				
COLUMBUS, OHIO				
<b>TRANSVERSE SECTION</b>				
BRIDGE No. LAK-2-0530				
SR. 2 OVER CHAGRIN RIVER				
LAKE COUNTY S.R. 2				
DESIGNED SM	DRAWN HM	TRACED B	CHECKED HH	REVIEWED JF
				DATE 4/6/80